



# LED EIN-WL10FR-2030e



Half Cylinder Indoor LED Wall Light W/Brushed Nickel Trims & Frosted Plastic Lens

## Product Description

An excellent choice for indoor illumination, this Euri Lighting wall light is offered in neutral Soft White (3000K) to create an inviting atmosphere within any home or office. Everything about this LED wall light, from the cylindrical shape to the brushed nickel housing, creates a contemporary and minimal style. Built to last 50,000 hours, this sleek flush wall light reduces energy and maintenance costs year after year.



**Estimated Energy Cost:** \$1.50 per year

**\*Note:** Design, features and specifications subject to change without notice. Some features may not be available on all models. For more information please visit: [www.eurilighting.com](http://www.eurilighting.com) or call 1-888-743-5766

## Specifications

Input Power	Input Voltage	Lumen Output	Beam Angle	Center Beam	CCT
12.5 W	120V/60Hz	950 lm	110°	N/A	3000 K
CRI	Luminous Efficacy	Power Factor	Input Current	Base/Cap	Lamp Lifespan
80	76 lm/W	0.7	0.1 A	Direct Wiring	50,000 Hrs.

### Product Features



Non-Dimmable



Instant-On/Off

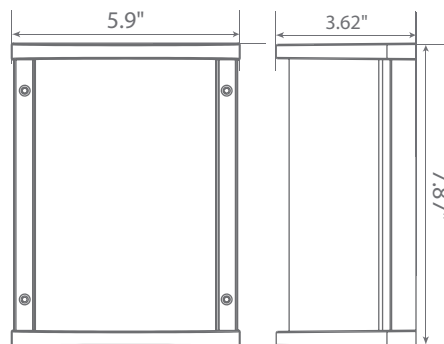


Mercury Free

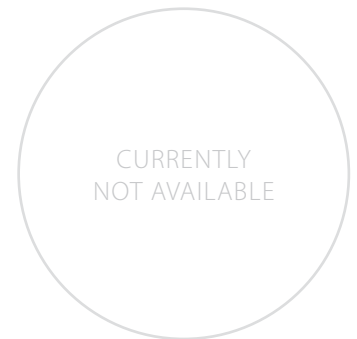


Wet Rated

### Product Dimensions



### Product Photometric Data



**Euri Lighting** | A Division of **IRTRONIX** Inc.

20900 Normandie Avenue Bldg. B Torrance, CA 90502 | Tel: 888.743.5766 | Fax: 310.787.1166 | [www.eurilighting.com](http://www.eurilighting.com)  
 ©2018 Euri Lighting. All Rights Reserved