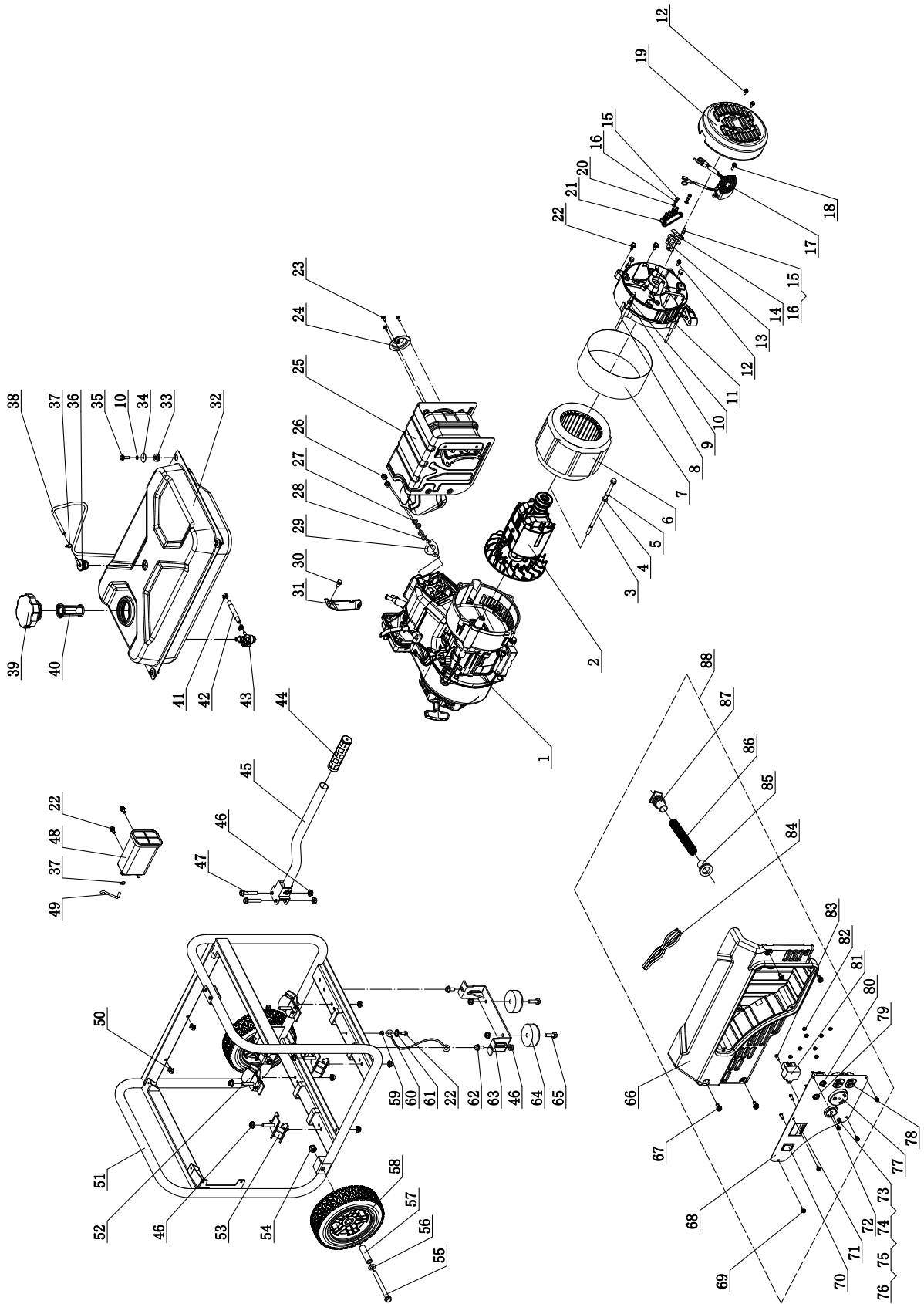


SPECIFICATIONS

Parts Diagram

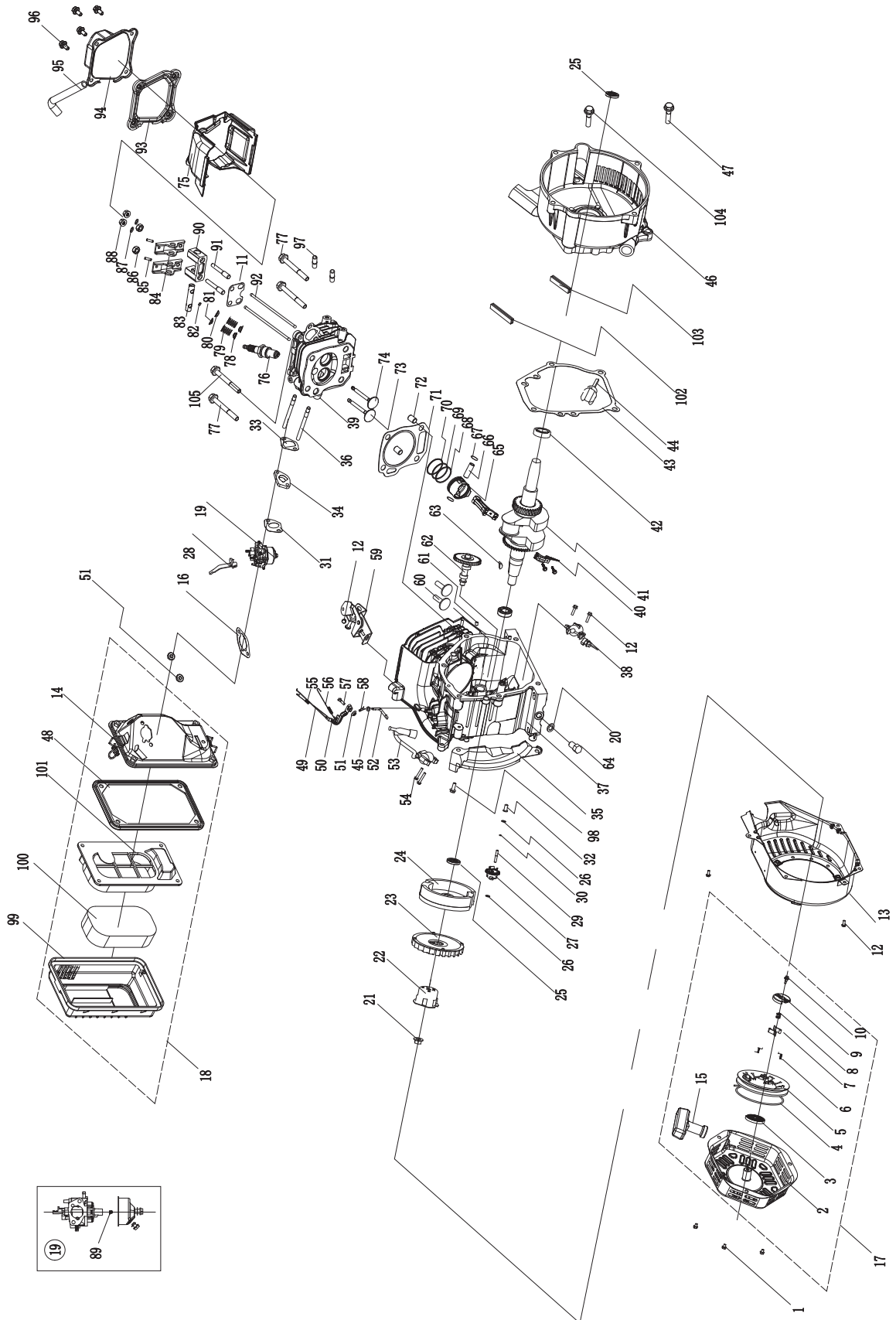


#	Part Number	Description	Qty
1	27.401	Engine	1
2	124.191100.10	Rotor Assembly, Al, ø119 x 90 mm	1
3	2.08.103	Flange Bolt M8 x 227	1
4	1.96.08	Washer ø8	1
5	1.7244.08	Lock Washer ø8	1
6	124.191200.11	Stator Assembly, Al, ø190 x 90 mm, CSA	1
7	124.191002.02	Stator Cover	1
8	2.08.050	Flange Bolt M6 x 133	4
9	1.97.1.06	Washer ø6	4
10	1.93.06	Lock Washer ø6	8
11	124.190002.00	End Housing	1
12	1.16674.0512.2	Flange Bolt M5 x 12	3
13	122.190300.00	Carbon Brush Assembly	1
14	122.190004.01	Brush Holder	1
15	1.5783.0516	Bolt M5 x 16	3
16	1.93.05	Lock Washer ø5	3
17	122.190200.03	AVR	1
18	1.16674.0516	Flange Bolt M5 x 16	2
19	152.190003.00.48	End Cover, Generator, Yellow	1
20	1.97.1.05	Washer ø5	2
21	122.190400.00	Terminal Block	1
22	1.5789.0612	Flange Bolt M6 x 12	5
23	1.823.0406	Screw M4 x 6	3
24	27.101300.00	Spark Arrester Assembly	1
25	27.101000.00	Muffler Assembly	1
26	1.6175.08	Nut M8	2
27	1.93.08	Lock Washer ø8	2
28	1.848.08	Washer ø8	2
29	26.100001.00	Gasket, Exhaust	1
30	1.5789.0608	Flange Bolt M6 x 8	1
31	23.090006.21	Bracket, Air Cleaner	1
32	122.071000.31.48	Tank, Fuel, Yellow	1
33	122.070015.01	Mount Vibration, Fuel Tank	4
34	2.03.004.1	Washer ø24 x ø6.5 x 1.5, Black	4
35	1.5789.0620.2.1	Flange Bolt M6 x 20, Black	4
36	24.070800.00	Reversal Valve	1
37	2.06.006	Clamp ø7 x 1	2
38	122.070014.01	Pipe, Reversal Valve, 740+30	1
39	122.070100.07	Cap, Fuel Tank	1
40	122.070300.03	Filter, Fuel	1
41	2.06.007	Clamp ø8 x b6	2
42	23.070011.04	Pipe, Fuel 6.1 in.	1
43	122.070400.05	Valve, Fuel	1

#	Part Number	Description	Qty
44	152.200702.00	Cover, Handle	1
45	122.200700.03.2	Handle	1
46	1.6177.1.08	Nut M8, Flange Lock	14
47	1.5789.0845	Flange Bolt M8 x 45	2
48	122.070700.00	Carbon Canister, 320cc	1
49	122.070013.00	Pipe, Air Cleaner	1
50	2.05.001	Clamp ø8 x 6.5	2
51	6.2.289.287.2	Frame	1
52	122.201200.05	Motor Mount, II	2
53	122.201200.04	Motor Mount, I	2
54	1.6182.10	Lock Nut M10	2
55	1.5782.10105	Bolt M10 x 105	2
56	1.96.10	Washer ø10, Flat	2
57	122.200016.01	Bushing ø16 x 10.5 x 59	2
58	122.201701.07	8 in. Wheel, Black, PU	2
59	1.6177.1.06	Nut M6, Flange Lock	1
60	5.1900.026	Line, Ground	1
61	1.862.06	Lock Washer ø6	1
62	1.5789.0816	Flange Bolt M8 x 16	2
63	152.200002.00.2	Support Leg 60 mm	1
64	152.201400.00	Rubber, Support	2
65	1.5789.0825	Flange Bolt M8 x 25	2
66	122.210002.26	Control Box	1
67	1.5789.0615.1	Flange Bolt M6 x 15, Black	4
68	122.20.2.2	Control Panel, Black	1
69	1.9074.4.0512.1	Screw/Washer Assembly M5 x 12, Black	5
70	5.1000.004.3	Switch, Ignition, Red	1
71	5.1440.001	Intelligauge, Power meter	1
72	5.1120.008	Receptacle L5-30R	1
73	1.5783.0514.3	Bolt M5 x 14, Green	1
74	1.6170.05.3	Nut M5, Green	2
75	1.97.1.05.3	Washer ø5, Green	1
76	1.862.05	Toothed Washer ø5	1
77	5.1120.036	Receptacle TT-30R	1
78	5.1120.010	Receptacle 5-20R Duplex	1
79	5.1210.930	Circuit Breaker, 30Amp	1
80	5.1210.920	Circuit Breaker, 20Amp	1
81	5.1810.001	Over Voltage Protector	1
82	1.6177.1.04.1	Nut M4, Flange Lock, Black	8
83	1.818.0514.2	Screw M5 x 14, Black	3
84	100103.21.10	Wire Assembly	1
85	122.210003.01	Wire Jacket, Control Box	1
86	5.1330.116	Sheath, Wire, ø16 x 200 mm	1
87	152.210003.02	Plug, Control Box	1
88	100103.21	Control Panel Assembly	1

SPECIFICATIONS

Engine Parts Diagram



#	Part Number	Description	Qty
1	1.5789.0608	Flange Bolt M6 x 8	3
2	22.061100.00.2	Recoil Starter Cover, Black	1
3	21.061005.00	Recoil Starter Spring	1
4	2.10.003	Rope ø5 x 1550	1
5	21.061001.01	Recoil Starter Reel	1
6	45.060003.00	Spring, Ratchet	2
7	45.060002.00	Starter Ratchet (Iron)	2
8	45.060009.00	Spring Guide, Ratchet	1
9	45.060007.00	Ratchet Guide	1
10	45.060008.00	Screw, Ratchet Guide	1
11	24.040004.00	Guide Plate, Push Rod	1
12	1.5789.0612	Flange Bolt M6 x 12	8
13	27.080100.02.48	Cover, Fan, Yellow	1
14	24.091100.21	Base, Air Cleaner	1
15	21.061300.00	Handle	1
16	24.130004.20	Gasket, Air Cleaner	1
17	22.061000.00	Recoil Assembly	1
18	27.091000.02	Air Cleaner Assembly	1
19	27.131000.01	Carburetor	1
	27.131000.06		
20	2.03.016	Washer, Drain Bolt ø10 x ø16 x 1.5	1
21	2.02.006	Nut M14 x 1.5	1
22	83.060001.01	Pulley, Starter	1
23	27.080001.00	Cooling Fan	1
24	24.120100.06	Flywheel	1
25	2.11.001	Oil Seal ø25 x ø41.3 x 6	2
26	2.03.020.1	Washer ø6.2 x ø15 x 0.5, Black	2
27	21.110100.00	Gear, Governor	1
28	23.130100.20	Choke Lever	1
29	21.110013.00	Shaft, Governor Gear	1
30	21.110011.00	Clip, Governor Gear	1
31	22.130003.00	Gasket, Carburetor	1
32	21.110012.01	Bushing, Governor Gear	1
33	24.130002.00	Gasket, Insulator	1
34	27.130001.00	Insulator, Carburetor	1
35	23.080600.00	Air Guide, Right Side	1
36	2.01.009	Stud Bolt M6 x 110	2
37	27.030100.01	Crankcase	1
38	21.127000.02	Oil Level Sensor	1
39	26.010100.01	Cylinder Head	1
40	27.050200.00	Connecting Rod	1
41	27.050100.00	Crankshaft	1
42	1.276.6205	Bearing, 6205	2
43	24.030008.00	Gasket, Crankcase Cover	1
44	46.031000.00.48	Oil Dipstick Assembly, Yellow	1
45	2.03.021.1	Washer ø6.4 x ø13 x 1, Black	1
46	27.030007.00	Cover, Crankcase	1
47	1.5789.0832.0.8	Flange Bolt M8 x 32	5
48	23.091002.21	Seal, Air Cleaner	1
49	23.110006.00	Rod, Governor	1
50	27.110003.00	Arm, Governor	1
51	1.6177.06	Nut M6, Flange	3
52	21.110001.00	Shaft, Governor Arm	1

#	Part Number	Description	Qty
53	22.123000.01	Coil, Ignition, Silicon Rubber, EPA	1
54	1.5789.0625	Flange Bolt M6 x 25	2
55	23.110005.01	Spring, Throttle Return	1
56	23.110007.00	Spring, Governor	1
57	2.08.040	Bolt, Governor Arm, 6 x 21	1
58	21.110008.00	Pin, Shaft	1
59	27.111000.20	Control Assembly	1
60	25.040013.00	Lifter, Valve	2
61	2.04.001	Dowel Pin, ø9 x 14	2
62	27.041000.00	Camshaft	1
63	2.14.012	Woodruff Key 4 x 7.5 x 19	1
64	2.08.037	Bolt, Drain, 10 x 1.25 x 25	1
65	27.050005.00	Piston	1
66	23.050003.00	Pin, Piston	1
67	2.09.001	Circlip ø18 x 1	2
68	27.050303.00	Ring, Oil	1
69	27.050302.00	Ring, Second Piston	1
70	27.050301.00	Ring, First Piston	1
71	27.030009.01	Gasket, Cylinder Head	1
72	2.04.003	Dowel Pin, ø10 x 14	2
73	23.040002.02	Valve, Intake	1
74	23.040006.02	Valve, Exhaust	1
75	27.080200.00	Air Shroud, Cylinder	1
76	2.15.002(F6RTC)	Spark Plug (F6RTC)	1
77	1.5789.0865	Flange Bolt M8 x 65	3
78	23.040017.00	Oil Seal, Valve	2
79	21.040003.00	Spring, Valve	2
80	21.040007.00	Retainer, Exhaust Valve Spring	1
81	21.040001.00	Retainer, Intake Valve Spring	1
82	21.040008.00	Rotator, Exhaust Valve	1
83	24.040202.00	Shaft, Rocker Arm	1
84	22.040009.00	Rocker Arm	2
85	22.040012.00	Screw, Valve Adjustment	2
86	21.040021.00	Nut, Lock M6 x 0.5	2
87	1.97.1.06	Washer ø6	2
88	1.6177.1.06	Nut M6, Flange Lock	2
89	27.131017.01	Standard Main Jet	1
	27.131017.01.01	Altitude Main Jet	/
90	24.040201.00	Retainer, Rocker Arm	1
91	23.040010.00	Bolt, Rocker Arm	2
92	27.040005.00	Push Rod	2
93	21.020002.01	Gasket, Cylinder Head Cover	1
94	24.021000.00	Cover, Cylinder Head	1
95	23.020001.02	Breather Tube	1
96	1.5789.0615	Flange Bolt M6 x 15	4
97	2.01.010	Stud Bolt M8 x 35	2
98	1.5789.0620	Flange Bolt M6 x 20	1
99	27.091200.01	Cover, Air Cleaner	1
100	23.091003.21	Element, Air Cleaner	1
101	23.091001.21	Separator, Air Cleaner	1
102	27.030013.00	Seal Strip, Crankcase Cover	1
103	27.030013.01	Seal Strip, Crankcase Cover	1
104	2.08.123	Flange Bolt M8 x 40	1
105	2.08.121	Flange Bolt, M10x65	1