



INSTALLATION INSTRUCTIONS

www.virtuusa.com

SKU: KS-70066

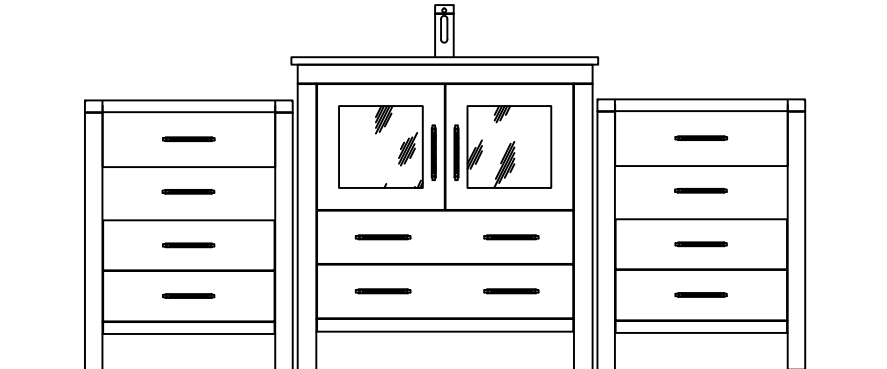
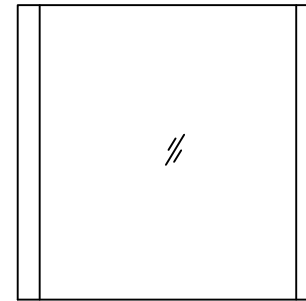
REV3.19.18

This model consists of individual cabinets to make the complete set.

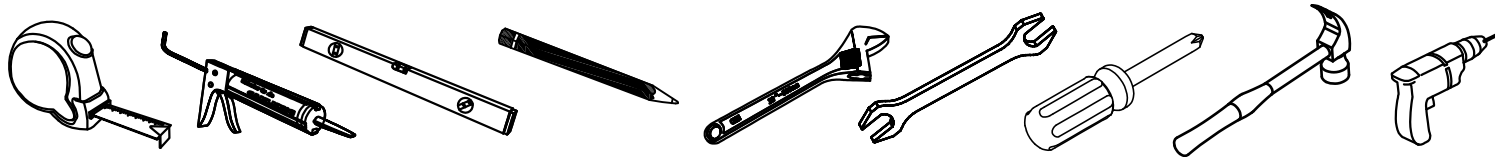
Prior to installation, please check the items you have received against the packing list. Report any missing items to your local dealer immediately.

Protect all surfaces from sharp objects, high heat sources, direct prolonged sunlight and chemical hazards.

Professional installation is recommended.

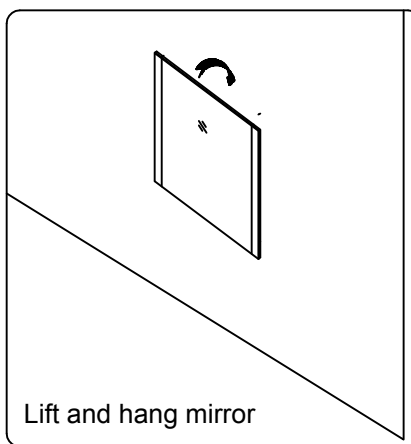
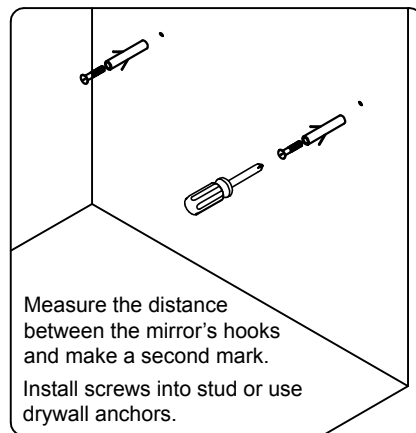
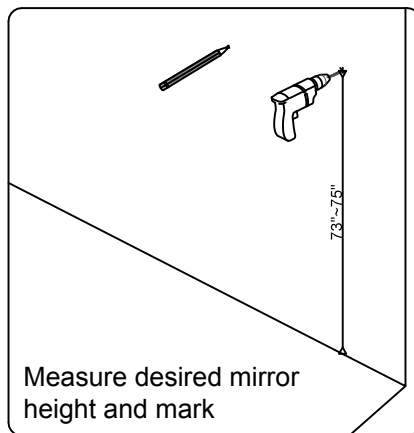
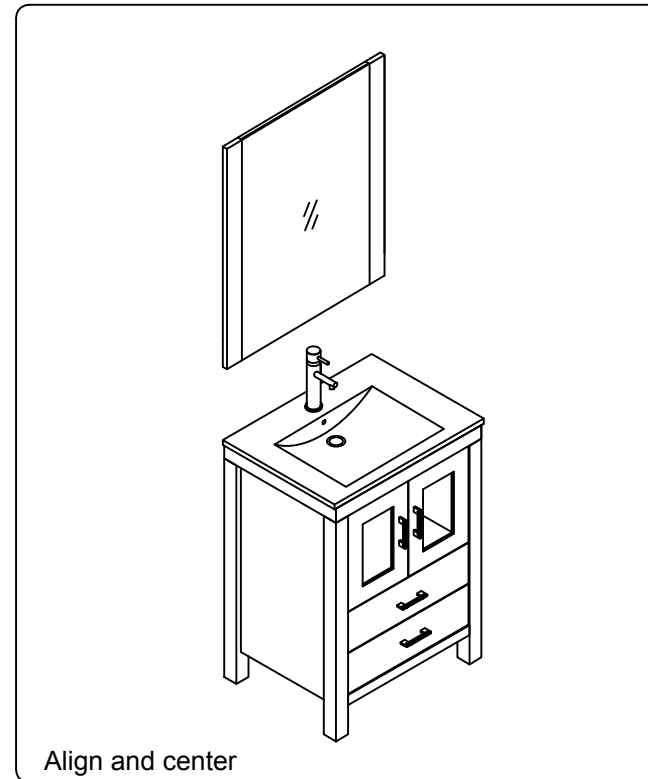
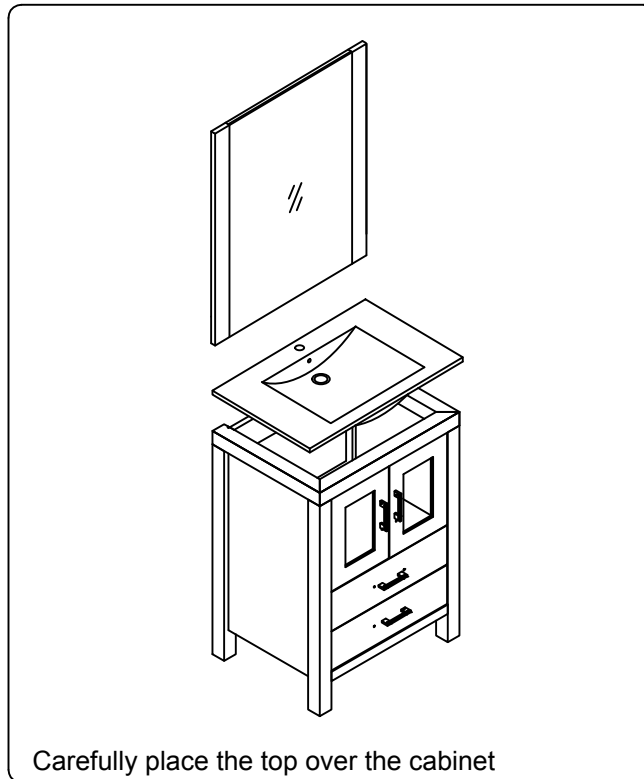
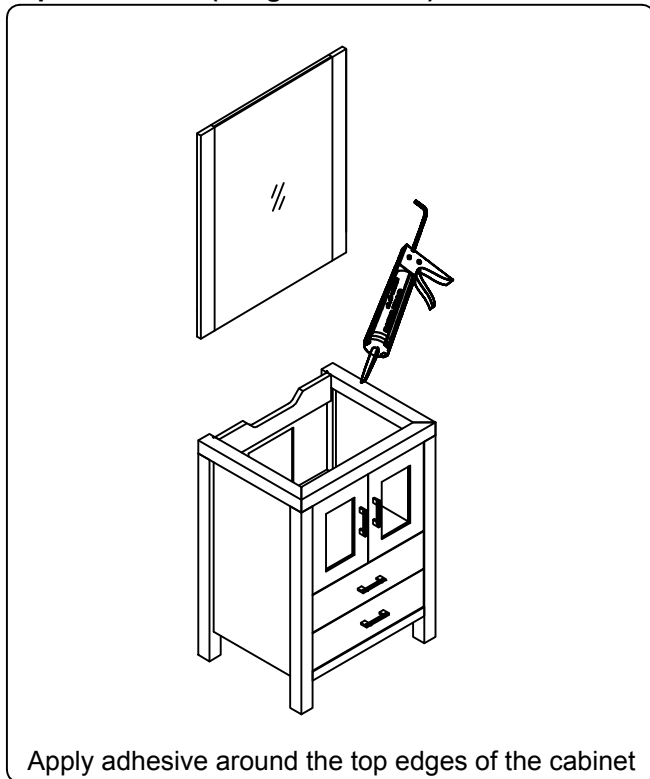


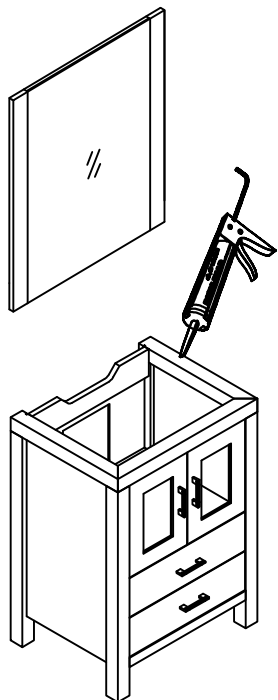
REQUIRED TOOLS



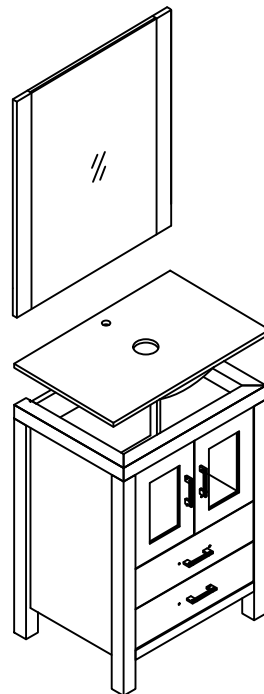
PARTS LIST (may differ depending on purchase)

Cabinet KS-70030	Mirror 	Side Cabinet KSC-700	Side Top 	Pop-Up & Drain 	Faucet 	Basin Integrated 	OR	Basin Vessel 	Top Vessel
--------------------------------	-------------------	------------------------------------	---------------------	-------------------------------	-------------------	-----------------------------	----	-------------------------	-----------------------

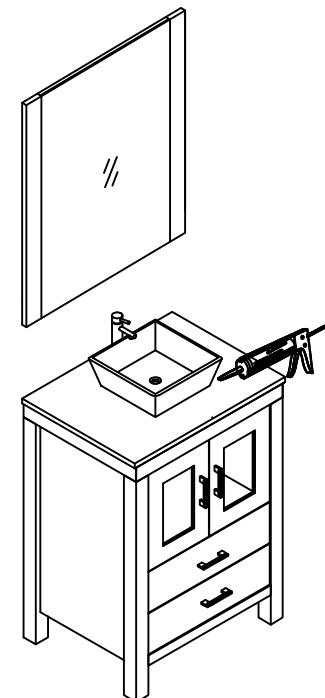
Mirror Installation

Top Installation (Integrated Basin)


Top Installation (Vessel Basin)


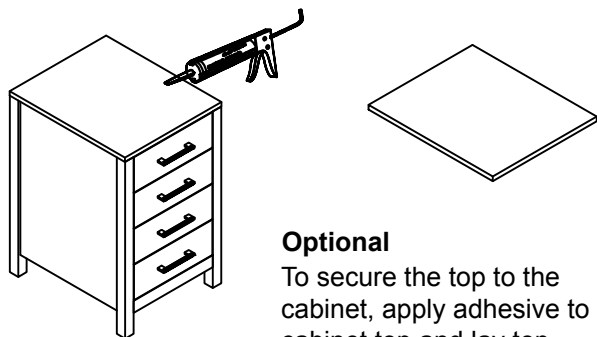
Apply adhesive around the top edges of the cabinet



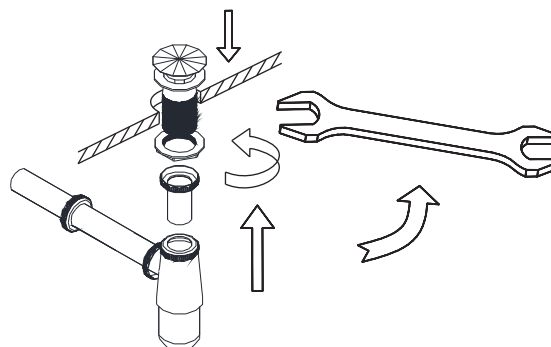
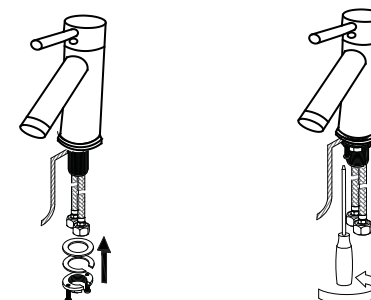
Carefully place the top over the cabinet



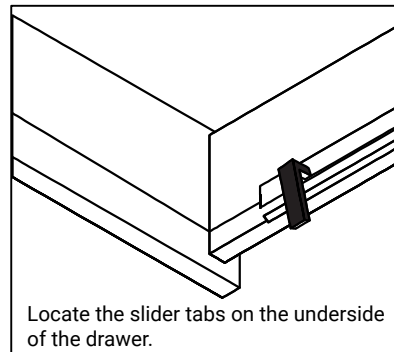
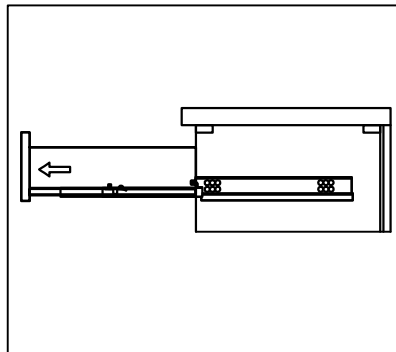
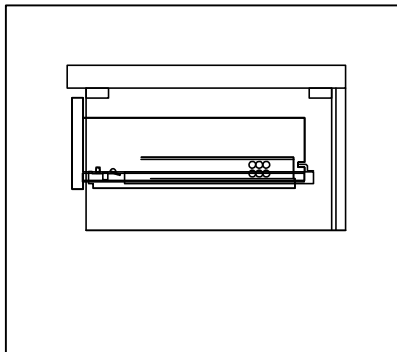
Align and center

Side Cabinet


Optional
To secure the top to the cabinet, apply adhesive to cabinet top and lay top.

Pop-Up & Drain

Faucet


DRAWER REMOVAL



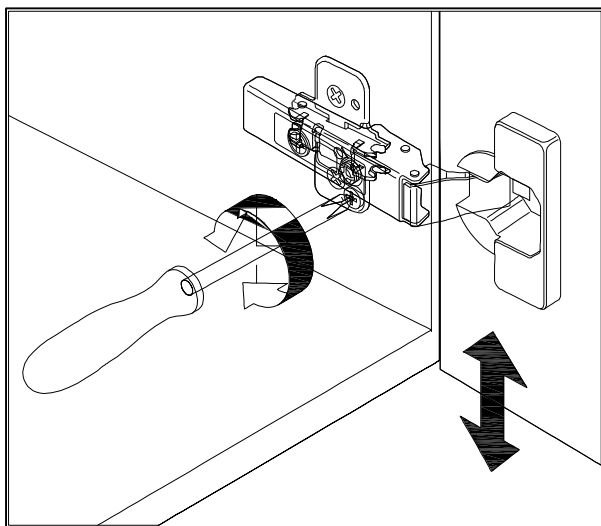
REMOVAL

1. Pull tabs toward center
2. Lift and pull drawer out

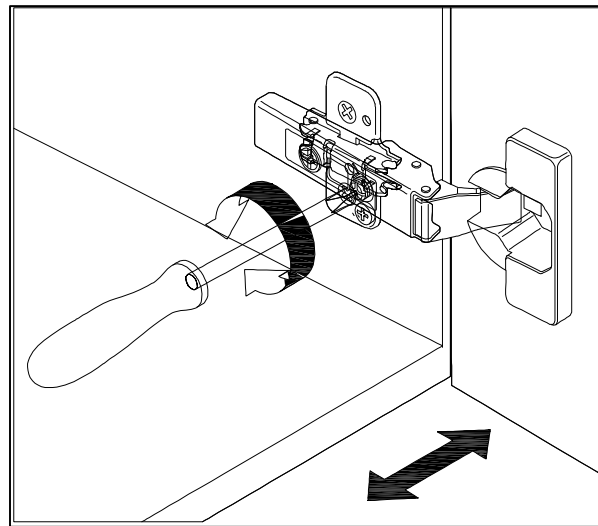
RE-INSTALL

1. Align drawer hole with slider stud
2. Push tabs back in to secure

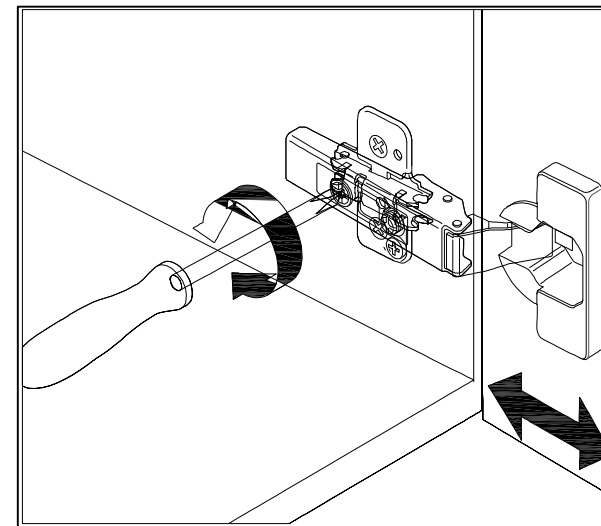
DOOR ADJUSTMENT



Adjusts the door vertically



Adjusts the door horizontally



Adjusts the door forward and backwards