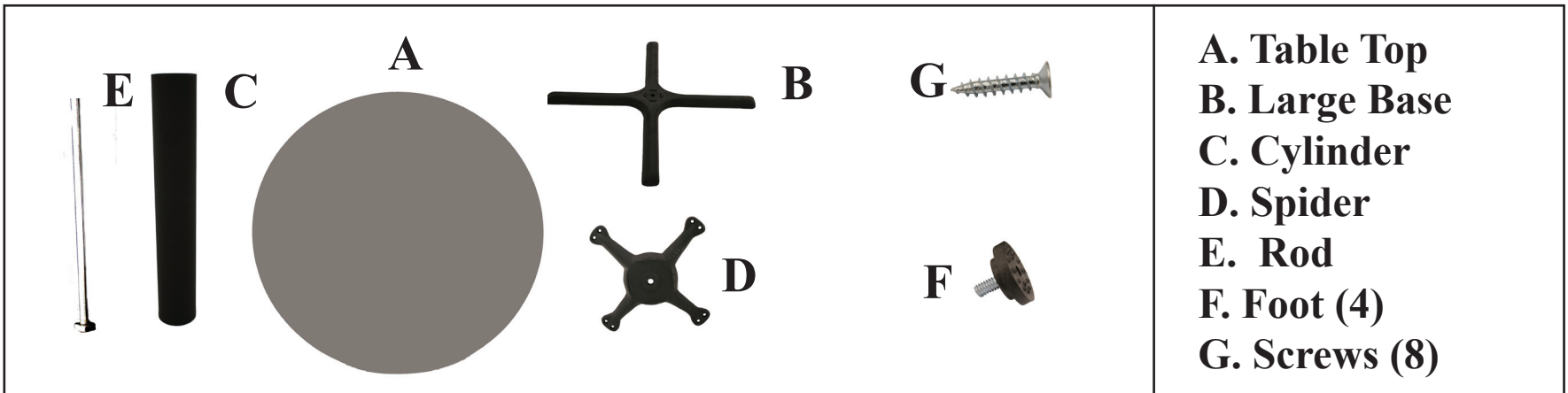




Round Table Top • INSTRUCTIONS

(MTBX22, MTBX30, MTBX36, TTRD30, TTRD36, TTRD42, TTRD48)

Organize your parts. You will need a drill, crescent wrench and pencil. Two people are required for assembly.



Step 1: Screw 4 feet (F) into base (B) leg ends.

Step 2: Remove the nut from rod (E) and set aside.

Step 3: Insert the rod (E) through the hole in the base (B) and attach nut to exposed rod end under base bottom.

STEP 4: Next place the cylinder (C) over the exposed metal rod (E).

STEP 5: Place the exposed end of the metal rod (E) through the hole in the spider (D) and twist the second nut back onto the rod until tight.

The product should now look like the example to the right.

STEP 6: Turn table upside down. Draw a line across the table at the widest point up and down and again left and right to find center.

STEP 7: Place dot 1, located on the back of this instruction, directly over the crossing lines on the table top (A).

STEP 8: Once aligned, punch a pen through remaining template dots 2,3,4,5 and mark table bottom.

STEP 9: Place table top (A) flat on the floor and set the completed base (H) over the center.

STEP 10: Line Up the marks made on table from step 8 with the holes on the spider arms.

STEP 11: Screw in all 8 screws (G) and flip table over.

IMPORTANT NOTICE

Place all wooden parts on a clean and smooth surface such as a rug or carpet to avoid the parts from being scratched.
Check to be sure that you have all parts and hardware.
Remove all wrapping materials, including staples & packing straps before you start to assemble.
Do not tighten all screws/bolts until completely assembled.
Keep all hardware parts out of reach of children.

Any problems or questions please call Regency Office Furniture at 1-866-816-9822

-The Outside dots are for 48" Table tops and MTBX 36 X-Bases.

-The Inside dots are for 30", 36" and 42" Table tops and MTBX 22 & 30 X-Bases.

