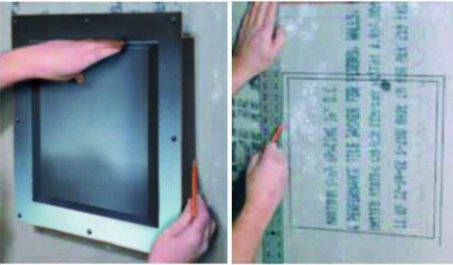


Recessed Shower Cube Installation Instructions



Step 1

Place Recessed Shower Cube level at desired location with flange facing out. When positioning the unit, make sure Shower Cube located between the 2" by 4" framing members. For some cases, customer need to install Shower Cube in horizontal position, please do necessary modification if needed before install the cement board. Trace the perimeter of Shower Cube on the cement board and then place the unit aside. Enlarge marked layout by 1/2" on all sides and cut out the cement board.



Step 2

Add a continuous bead of adhesive caulk along mounting flange, then secure Recessed Shower Cube to wall



Important: Thickness of Recessed Shower Cube flange should be minimized to provide a flush wall surface for the finish tile. Use bonding material (thin-set to feather the edge of the unit for a distance of 4" ` 6" and allow to set firm prior to continuing with finish tile placement.



Step 3

Finish as desired using bonding products suitable for finish surface material being applied.

Note: All Recessed Shower Cube have a predetermined slope for the bottom surface. This may be reduced or enhanced by using a thicker bed of bonding material at the front or rear of horizontal plane as necessary. Do not adjust slope to angle backward toward rear of unit.

