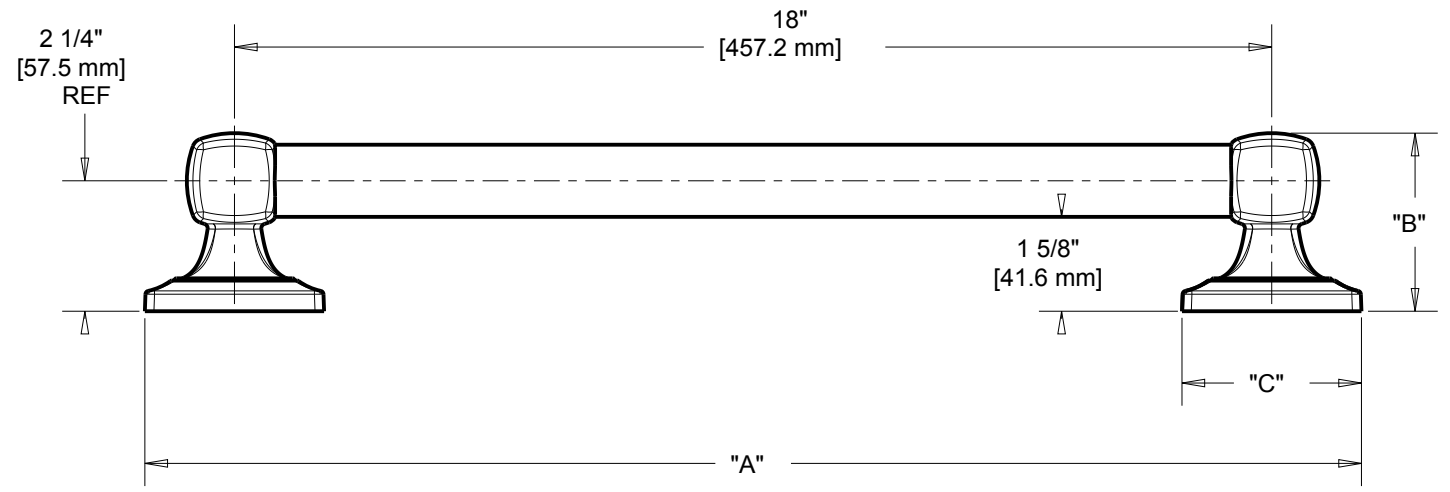
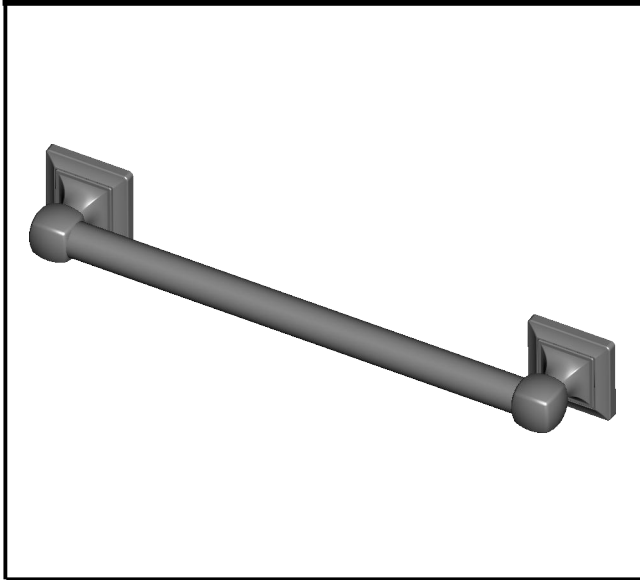


HARVARD GRAB BAR

16", 24" GRAB BAR



MATERIALS: Grab bar is constructed using 1-1/4" diameter 20 gauge 304 stainless steel tubing. Decorative posts and trim rings are cast in zinc. Trim rings are held in place using a friction fit. Meets ADA and ANSI A117.1-2003 for form and load bearing requirements.

INSTALLATION: Install grab bar with 3 - #10 x 2-1/2" flat head stainless steel screws provided for each end wall flange. Slide cover flanges over wall flanges and press firmly to complete installation.

OPTIONAL FASTENER INFORMATION:
Wall studs or Wood blocking is preferable behind all wall surfaces. If wood blocking is not available, the following fasteners are suggested: Non-Stud Wall anchor.

SPECIFICATION: Surface mounted Grab Bar shall be model _____
(fill in model number) by Liberty Hardware Manufacturing Corporation.

LENGTH	A (Total Length)	B (Height)	C (Post Base dimension)
16"	19 1/8" (485.5 mm)	3 3/32" (78.5 mm)	3 1/8" (79.1 mm)
24"	27 1/8" (688.7 mm)	3 3/32" (78.5 mm)	3 1/8" (79.1 mm)