



# Transfer XXXL Dual Massage + Digital Control Heated Seat HB Walk In Bathtub

(Wheelchair Accessible)



OLA3655DH-HB-L-D Left Drain



OLA3655DH-HB-R-D Right Drain

Actual Size: 36" W x 55" L x 42" H  
Shipping Size: 38" W x 57" L x 50" H  
Shipping Weight: 300 lbs.  
Net Weight: 220 lbs.  
Water Capacity: 95 gal. US (unoccupied)  
55-75 gal. US (occupied)  
Approx. Drain Time: +/- 80 sec (unoccupied)\*

Options:  
• Left or Right Hinged Door

\*at ideal home plumbing conditions

## Included Features:

1. Acrylic Tub Shell:
  - High quality acrylic
  - Excellent color uniformity
  - High Gloss White Finish
  - Fiberglass Reinforced
2. Low threshold step in 6"
3. Stainless Steel Frame with Adjustable Leveling Legs
4. Seat: 31" W x 18" L x 17" H
5. Two (2) front and one (1) end removable access panel
6. Wall and deck mounted stainless steel safety grab bar in plated chrome finish
7. Digital Controller
8. LED Chromotherapy Light .04AMP
9. Aromatherapy
10. L-shaped door for wheelchair access
11. Hydro Massage System 5AMP 600W
  - Nine (9) adjustable and four (4) fixed hydro jets
  - Hydro Massage Air Flow Intensity Control
  - In-line water heater 5.5AMP 650W
12. Air Massage System 4.5AMP 486W
  - Seventeen (17) therapeutic air massage jets with backflow valve
  - Variable speed pump with autopurge

13. Five-Piece Fast Fill Huntington Brass faucet set
  - 14-18 GPM (average) @ 60 PSI
  - Pull out, hand held, chrome plated hand shower with 5 ft. retractable stainless steel braided hose
14. Heated seat and backrest 4AMP 470W

## Plumbing

- Two (2) x 5' long stainless steel braided water supply lines with 3/4" IPS connectors
- Two (2) x 2" floor drains
- Two (2) PVC 2" drain elbows

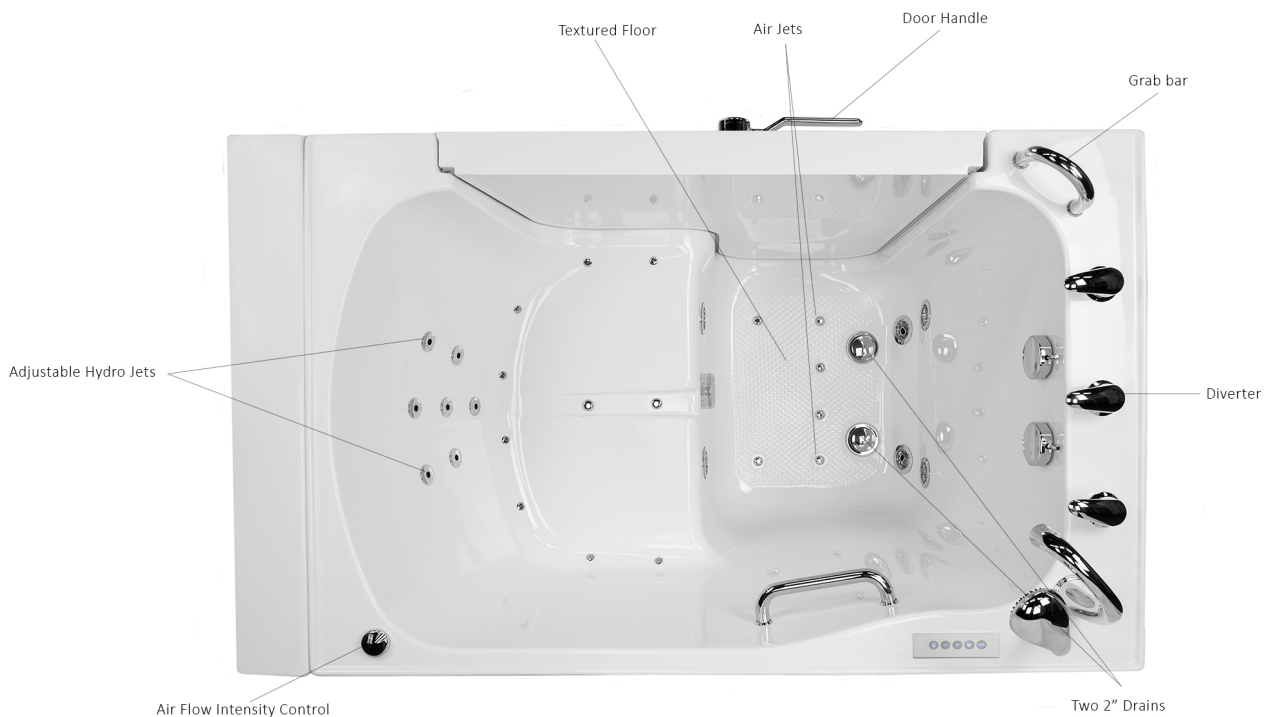
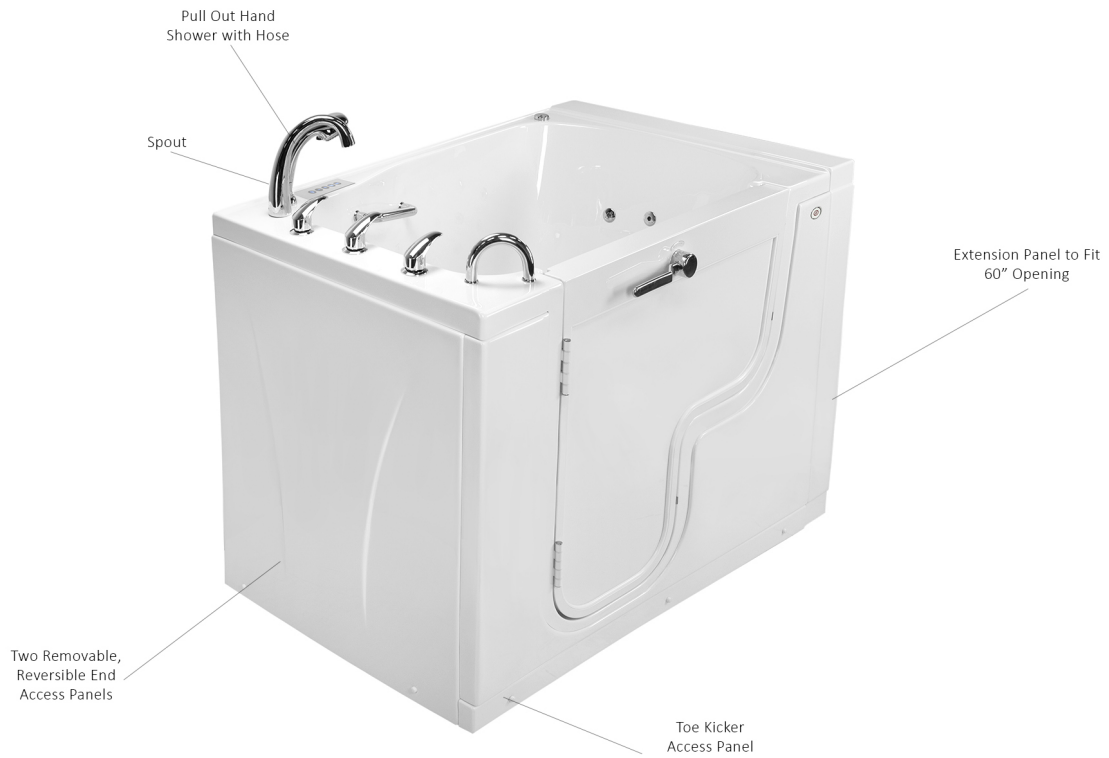
## Electrical

Electrical requirement is one dedicated 120V electrical line with a 20AMP GFCI standard three prong outlet

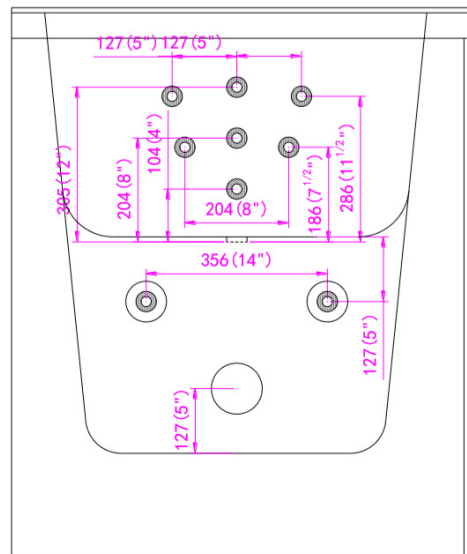
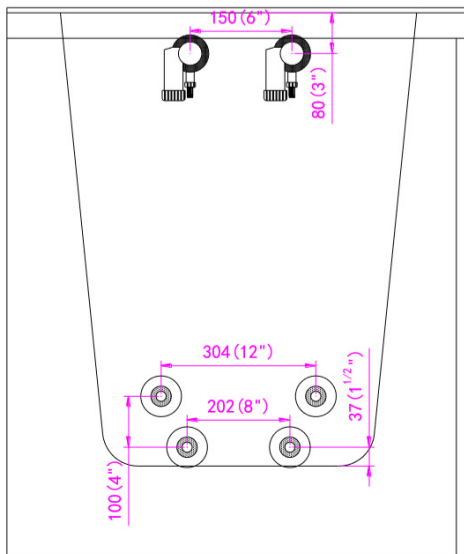
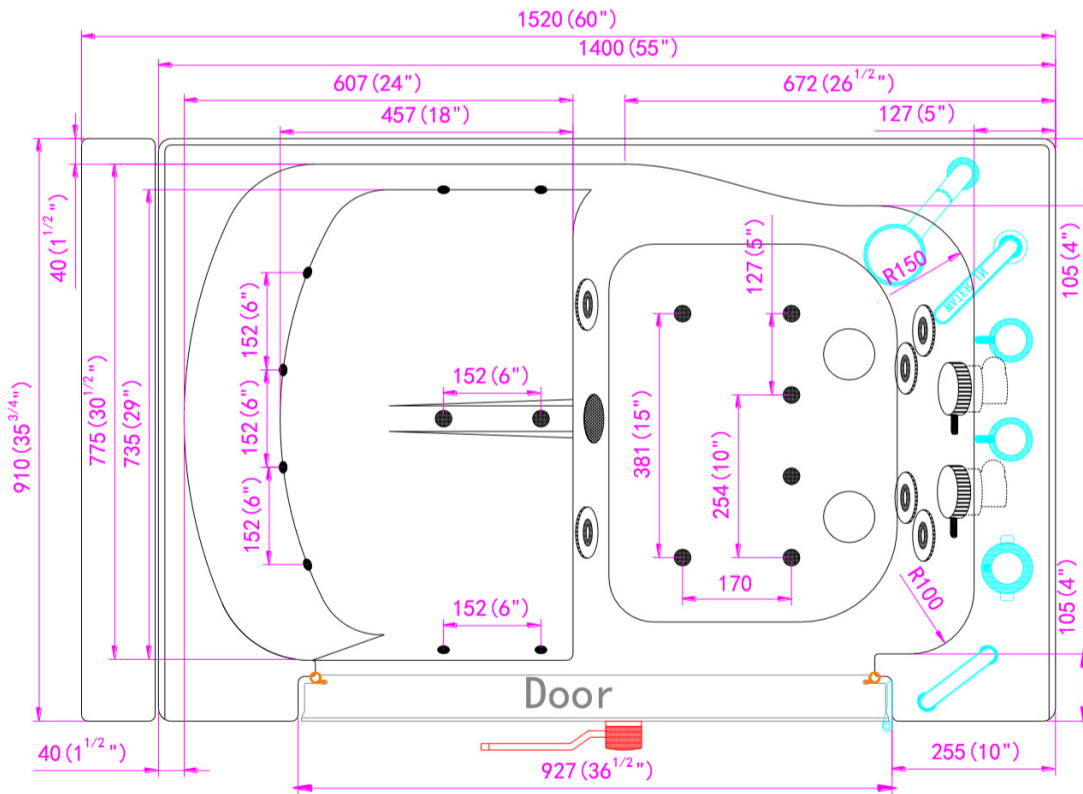
## Warranty

- Lifetime limited warranty on acrylic walk in tub shell, frame, and door
- 5 year parts warranty (please visit [www.ellasbubbles.com](http://www.ellasbubbles.com) for more detailed information)
- Thermostatic Control Valve (TCV) 1 year limited warranty

# Transfer XXXL Dual Massage + Digital Control Heated Seat HB Walk In Bathtub (Wheelchair Accessible)



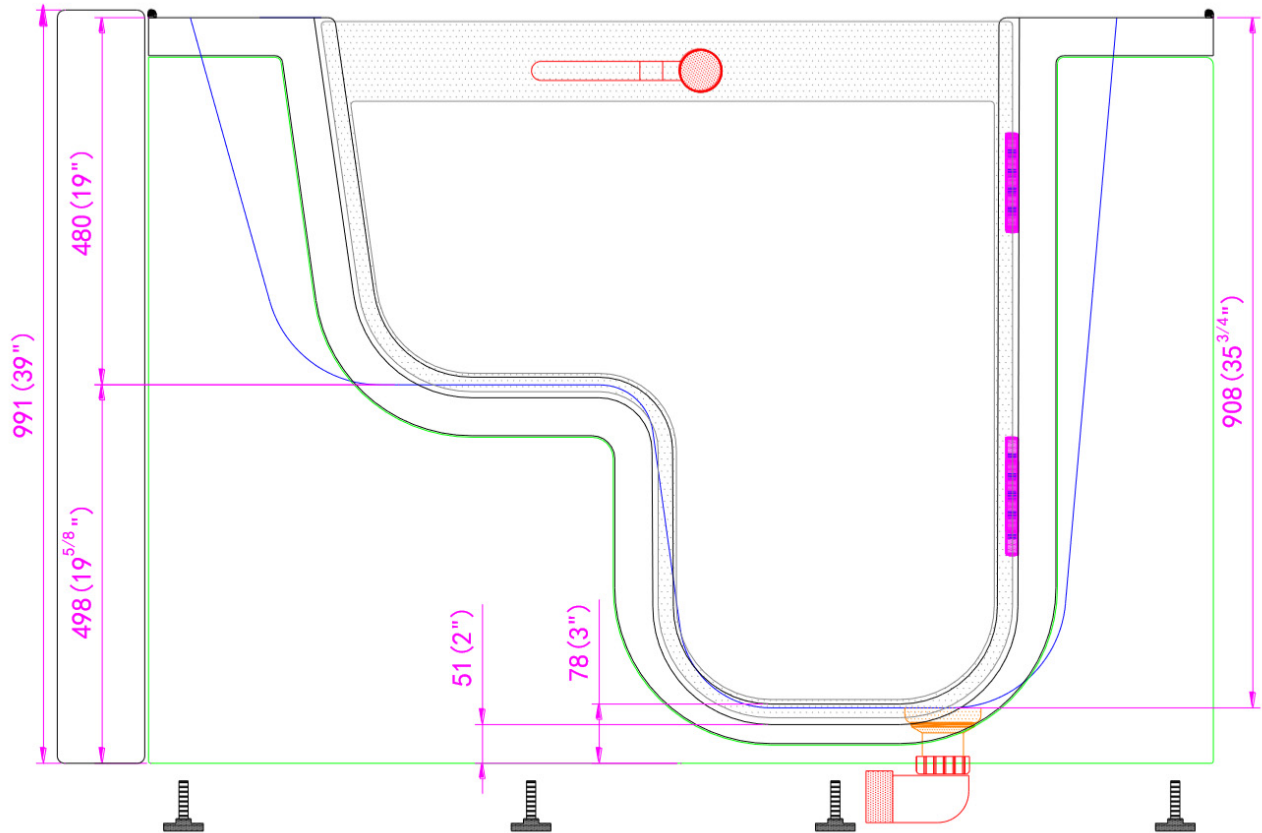
# Transfer XXXL Dual Massage + Digital Control Heated Seat HB Walk In Bathtub (Wheelchair Accessible)



**Disclaimer:**

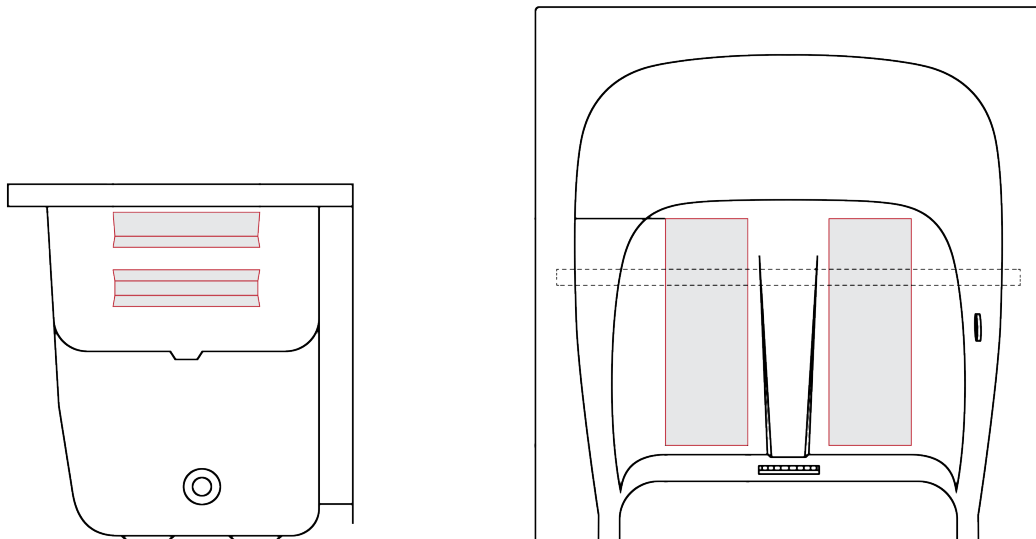
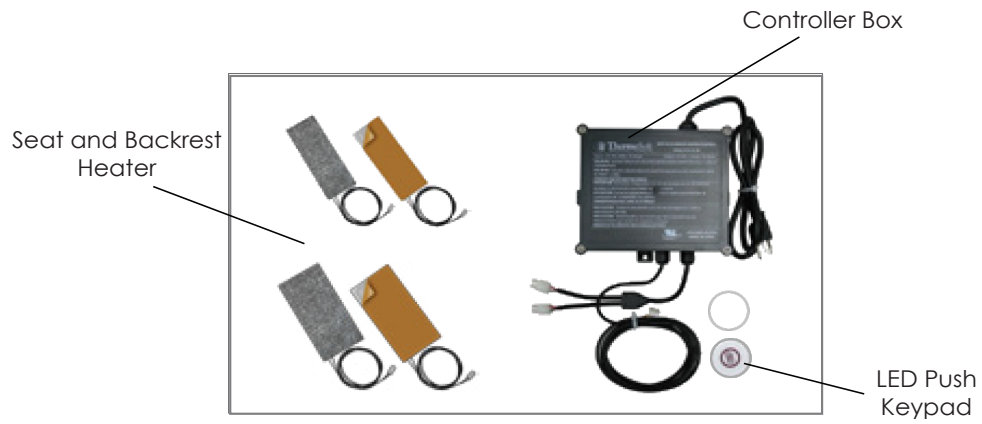
In an effort to continually improve our product, specifications and configurations are subject to change without notice. Before ordering or installing, consider future access to essential equipment.

# Transfer XXXL Dual Massage + Digital Control Heated Seat HB Walk In Bathtub (Wheelchair Accessible)



Disclaimer:  
In an effort to continually improve our product, specifications and configurations are subject to change without notice. Before ordering or installing, consider future access to essential equipment.

# Transfer XXXL Dual Massage + Digital Control Heated Seat HB Walk In Bathtub (Wheelchair Accessible)



Disclaimer:  
In an effort to continually improve our product, specifications and configurations are subject to change without notice. Before ordering or installing, consider future access to essential equipment.