



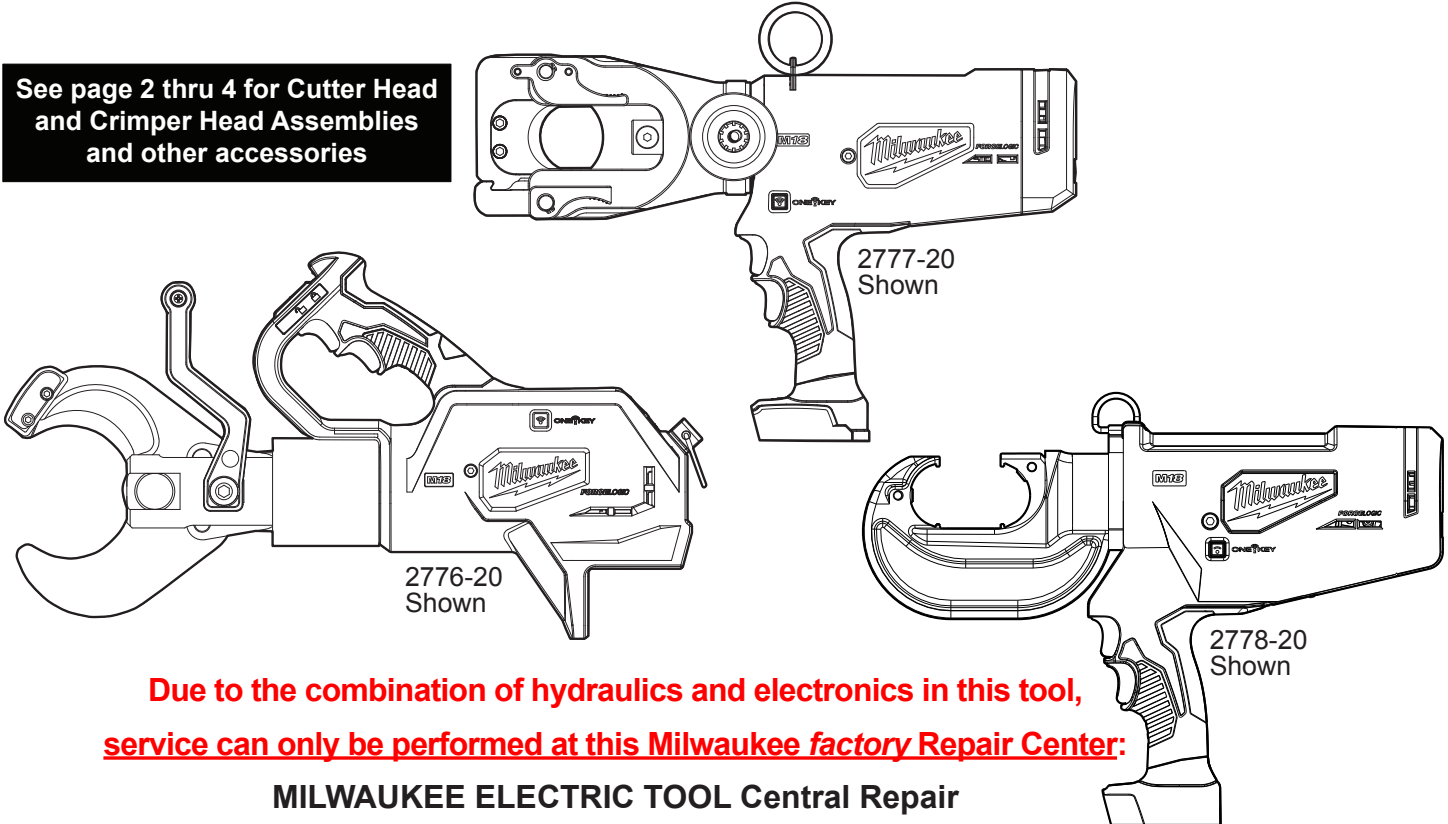
SERVICE PARTS LIST

BULLETIN NO.
54-00-12TC

SPECIFY CATALOG NO. AND SERIAL NO. WHEN ORDERING PARTS		REVISED BULLETIN	DATE
M18™ FORCELOGIC™ 12T HYDRAULIC TOOLS			Feb. 2017
CATALOG NO.	SERIAL NUMBER	WIRING INSTRUCTION	

- 2776-20 M18™ FORCELOGIC™ 3" Underground Cable Cutter and cutter head assemblies
- 2776R-20 M18™ FORCELOGIC™ 3" Underground Cable Cutter with Wireless Remote and cutter head assemblies
- 2777-20 M18™ FORCELOGIC™ 1590 ACSR Cable Cutter and cutter head assemblies
- 2778-20 M18™ FORCELOGIC™ 12 Ton Crimper and crimper head assemblies
- 2779-20 M18™ FORCELOGIC™ 750 MCM Crimper and crimper head assemblies

See page 2 thru 4 for Cutter Head and Crimper Head Assemblies and other accessories



Due to the combination of hydraulics and electronics in this tool, service can only be performed at this Milwaukee factory Repair Center:

MILWAUKEE ELECTRIC TOOL Central Repair
1013 Sycamore Avenue • Greenwood, MS 38930-7277
Please send your tool directly to this location for service.

Or

Via e-Service at: www.milwaukeetool.com/e-service
questions, please call 1.800.SAWDUST (1.800.729.3878)

Or

Return it to a MILWAUKEE factory Service Center location, freight prepaid and insured.
A copy of the proof of purchase should be included with the return product.

If you have questions please contact Milwaukee Product Service at:

Product Technical Support via phone at: 262.783.8642

Or

Via email at: METProductSupport@milwaukeetool.com

Disassembly is not recommended and could void the warranty.

Accessories and External Service Parts for the 2776-20 and 2776R-20 12T Underground Cutters

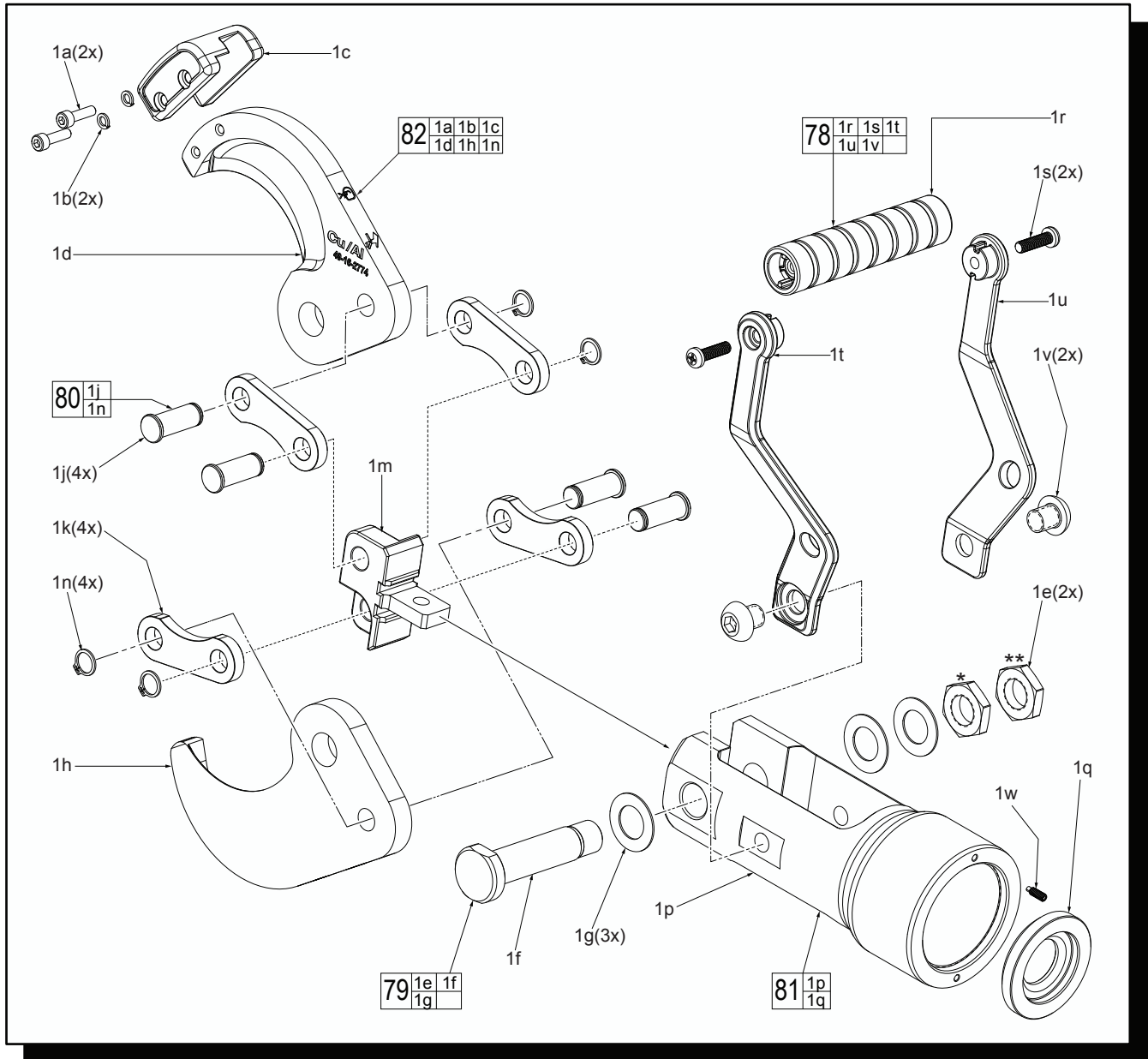


FIG.	PART NO.	DESCRIPTION OF PART	NO. REQ.
1	-----	Underground Cutter Head Assembly	(1)
1a	-----	M5 x 18mm Cap Screw 4mm Hex Drive	(2)
1b	-----	Spring Washer	(2)
1c	-----	Blade Retainer	(1)
1d	-----	Left Blade	(1)
1e	-----	M17 Nut	(2)
1f	-----	M18 Screw Bolt	(1)
1g	-----	Washer	(3)
1h	-----	Right Blade	(1)
1j	44-60-0049	Pin	(4)
1k	44-66-0116	Connector Plate	(4)
1m	44-14-0075	T-Connector	(1)
1n	34-80-1300	Retaining Ring	(4)
1p	-----	Clevis - Underground Cutter	(1)
1q	-----	Stop Ring	(1)
1r	-----	Bail Handle Grip	(1)
1s	-----	M6 x 22mm Pan Hd. Phillips Screw	(2)
1t	-----	Bail Handle Support - Left	(1)
1u	-----	Bail Handle Support - Right	(1)
1v	-----	M8 x 6.5 Screw with 8mm Hex Drive	(2)
1w	-----	Extended Point Set Screw	(1)
78	14-34-0122	Bail Handle Kit	(1)
79	42-32-0265	Screw Bolt Kit	(1)
80	44-60-0059	Pin Kit	(1)
81	-----	Clevis Assembly	(1)
82	49-16-2774	Replacement UG Cutter Blade Set	(1)
83	12-20-0089	Service Nameplate (Not Shown)	(1)
84	10-20-1119	Label for Wireless Remote (Not Shown)	(1)
85	42-70-0027	Carabiner (Not Shown)	(1)

TORQUE SPECIFICATIONS		
Fig.	kgf.cm	in.lbs
1a	100	86.8
1e*	5	4.34
1e**	150	130
1s	30	26
1v	100	86.8
1w	15	13

First nut must fix the screw bolt.
Second nut must fix the first nut and bolt.

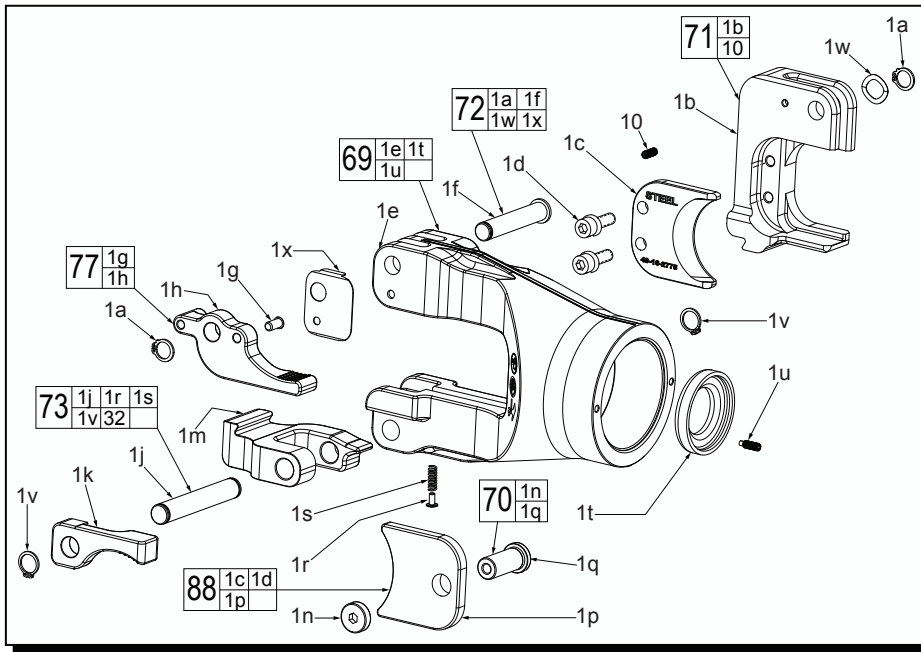
LUBRICATION

Type S2 Grease, 49-08-5265

- 1d Brush a thin film of grease on the two side surfaces which near the Ø18 hole.
- 1h Brush a thin film of grease on the two side surfaces which near the Ø18 hole.
- 1p Brush a thin film of grease on the two inside contact surfaces.

FIG.	PART NO.	DESCRIPTION OF PART	NO. REQ.
86	48-22-8280	Underground Cutter Bag (Not Shown)	(1)
87	22-80-2776	Remote Control For 2776R-20 Only (Not Shown)	(1)

Accessories and External Service Parts for the 2777-20 12T Overhead Cutter



TORQUE SPECIFICATIONS		
Fig.	kgf.cm	in.lbs
1d	150	130
1n	15	13
1u	25	21
10	15	13

LUBRICATION

Type S2 Grease, 49-08-5265

- 1e 4g to the inside surface of the blade groove on the Cutter Head Body.
- 1f Place a light coat (approx. 0.8g) to shaft of 10mm Pin-Short.
- 1j Place a light coat (approx. 0.8g) to shaft of 10mm Pin-Long.
- 1m Apply 1.6g to inside cavity of Latch Clip.
- 1q Place a light coat (approx. 0.8g) to shaft of Pin Blade Connector.

FIG.	PART NO.	DESCRIPTION OF PART	NO. REQ.	FIG.	PART NO.	DESCRIPTION OF PART	NO. REQ.
1	-----	Overhead Cutter Head Assembly	(1)	1t	-----	Stop Ring	(1)
1a	-----	Retaining Ring	(2)	1u	-----	M4 x 10mm Set Screw	(1)
1b	-----	Blade Holder	(1)	1v	-----	Retaining Ring	(2)
1c	-----	Blade	(1)	1w	-----	Wave Spring	(1)
1d	-----	M6 x 20mm Hex Drive Scr. w/ Washer	(2)	10	-----	M4 x 10mm Set Screw	(1)
1e	-----	Cutter Head Body	(1)	69	-----	Clevis and Stop Set Screw Assembly	(1)
1f	-----	10mm Pin - Short	(1)	70	44-60-0411	Blade Pin and Thumb Screw Kit	(1)
1g	-----	Ball Spring Plunger	(1)	71	43-72-0314	Fixed Blade Holder and Set Screw Kit	(1)
1h	-----	Trip Lever	(1)	72	44-10-0495	Short Pin Kit	(1)
1j	-----	10mm Pin - Long	(1)	73	44-10-0505	Long Pin Kit	(1)
1k	44-10-0590	Release Lever	(1)	77	44-10-0585	Trip Lever Assembly	(1)
1m	44-20-0555	Latch Clip	(1)	88	49-16-2775	Replacement OH Cutter Blade Set	(1)
1n	-----	Thumb Screw	(1)	65	49-96-0012	Key Wrench	(1)
1p	-----	Moveable Blade	(1)	83	12-20-0089	Service Nameplate (Not Shown)	(1)
1q	-----	Pin Blade Connector	(1)	85	42-70-0027	Carabiner (Not Shown)	(1)
1r	-----	Head Pin	(1)	86	48-22-8279	Accessory Utility Bag (Not Shown)	(1)
1s	-----	Spring	(1)				

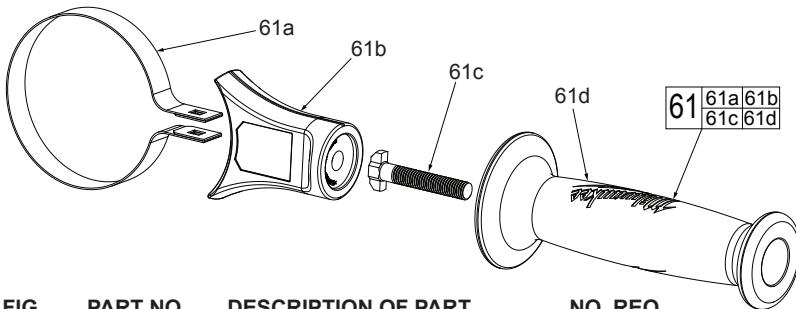


FIG.	PART NO.	DESCRIPTION OF PART	NO. REQ.
61	14-34-0270	Side Handle Assembly	(1)
61a	-----	Clamping Ring	(1)
61b	-----	Handle Housing with Warning Label	(1)
61c	-----	T-Bolt	(1)
61d	-----	Side Handle	(1)

Accessories and External Service Parts for the 2778-20 12T Utility Crimper and 2779-20 12T 750 MCM Crimper

FIG.	PART NO.	DESCRIPTION OF PART	NO. REQ.
45	43-86-2778	Crimper Head Rubber Boot For 2778-20 (Not Shown)	(1)
52	42-70-0027	Carabiner (2778-20 Only) (Not Shown)	(1)
55	12-20-2780	Service Nameplate (Not Shown)	(1)
	42-55-2778	Blow Molded Carrying Case For 2779-20 (Not Shown)	(1)
	48-22-8279	Accessory Utility Bag For 2778-20 (Not Shown)	(1)

12T COPPER U DIE			
	WIRE SIZE	COLOR CODE	PART NUMBER
COPPER	#8 AWG	RED	49-12-U008C
	#6 AWG	BLUE	49-12-U006C
	#4 AWG	GREY	49-12-U004C
	#2 AWG	BROWN	49-12-U002C
	#1 AWG	GREEN	49-12-U001C
	1/0 AWG	PINK	49-12-U01AC
	2/0 AWG	BLACK	49-12-U02AC
	3/0 AWG	ORANGE	49-12-U03AC
	4/0 AWG	PURPLE	49-12-U04AC
	250 MCM	YELLOW	49-12-U250C
	300 AWG	WHITE	49-12-U300C
	350 MCM	RED	49-12-U350C
	400 MCM	BLUE	49-12-U400C
	500 MCM	BROWN	49-12-U500C
	600 MCM	GREEN	49-12-U600C
750 MCM	BLACK	49-12-U750C	

U DIE KIT 49-12-KITC: Includes #6 AWG through 750 MCM (Total 15 sets)

12T DUAL RATED COPPER/ALUMINUM U DIE			
	WIRE SIZE	COLOR CODE	PART NUMBER
DUAL RATED COPPER/ALUMINUM	#8 AWG	BLUE	49-12-U008
	#6 AWG	GRAY	49-12-U006
	#4 AWG	GREEN	49-12-U004
	#2 AWG	PINK	49-12-U002
	#1 AWG	GOLD	49-12-U001
	1/0 AWG	TAN	49-12-U01A
	2/0 AWG	OLIVE	49-12-U02A
	3/0 AWG	RUBY	49-12-U03A
	4/0 AWG	WHITE	49-12-U04A
	250 MCM	RED	49-12-U250
	300 AWG	BLUE	49-12-U300
	350 MCM	BROWN	49-12-U350
	400 MCM	BLUE	49-12-U400
	500 MCM	BROWN	49-12-U500
	600 MCM	GREEN	49-12-U600
750 MCM	BLACK	49-12-U750	

U DIE KIT 49-12-KITA: Includes #6 AWG through 750 MCM (Total 15 sets)