

# Prolux S7 7 in 1 Steam Cleaner Owners Manual



Congratulations on your purchase of your new Prolux S7 7 in 1 Steam cleaner! The Prolux S7 Upright Steamer is designed to do 1 thing. Cut your cleaning time in half with no harsh chemicals! With a tool for nearly any job and up to 7 different functions it is designed to clean anything in your home. It is designed to instantly heat up (no heating wait time) which allows you to use it as your primary mop and floor cleaner. It also turns into a hand held steamer with a tool for nearly every job. Some of the many things it can clean is hardwood and hardfloor surfaces, tile, tile grout, stoves, refrigerators, around toilets, grills, window tracking, windows, furniture, showers and baths, and clothes just to name a few. All while cleaning with just the power of water (no chemicals needed). Not only is it faster but its safer as well. With its 1 year factory warranty (with US Warranty Centers) the Prolux S7 is designed to be a high end appliance that lasts for many years to come.



## Index Page

Product Specifications .....	3
Parts Description.....	4
Safety Instructions.....	5
Assembling the Unit .....	7
Filling the Water Tank.....	7
Attaching the Floor Mop Pad.....	7
Starting the Unit.....	7
Accessories.....	8
Use of Accessories.....	9
Filling the Water Tank During Operation.....	10
Maintenance & Storage.....	10
Warranty Information.....	10

### Specifications:

- 1450 Watt 120 Volt Powerful Steam Cleaner.
- 14 ounce water tank provides for over 15 minutes of steam time.
- Instant Steam (no heating time).
- Safe Powerful Deep Cleaning (steam cleans at 208 degrees Fahrenheit) and Steam Pressure up to 1 bar.
- Lightweight and only weights 5.8 pounds.
- 24 foot long power cord.
- Powerful blasting steam produces 1 ounce of steam a minute.
- Over 10 different accessory tools for cleaning nearly any job.
- ETL certified for safety.
- 1 Year Factory Warranty.
- Over 7 Separate cleaning functions allows you to clean nearly every job.



## Accessories



### Description of Accessories

1. Concentration Nozzle & Adapter Tool
2. Corner Attachment Nozzle
3. Scraper Attachment
4. Floor Mop Pad x 2
5. Carpet Glider Attachment
6. Window Track & Tile Attachment
7. Nylon Brush Attachment
8. Upholstery & Garment Attachment
9. Copper Brush Attachment
10. Window Squeegee Attachment
11. Upholstery & Garment Attachment Pad
12. Floor Attachment

### Safety Instructions:



When replacing couplings on power cords or extension cords, the cord must remain water-splash proof.

Before using the device, check it to make sure that it is in an orderly condition and safe to operate.

Do not fill the water tank with any other substance than water. Doing so may cause a flammable hazard. This unit is only designed to run on water.

Only use tap water. In hard water areas, we recommend that you use distilled water to prevent the formation of mineral deposits in the unit.

When replacing couplings on power cords or extension cords, the cord must remain water splash proof. Before using the device check it to make sure its in orderly condition and safe to operate. Especially check the power cord.

Do not steam any materials that contain Asbestos or that contain harmful substances.

Never use the unit as a toy. This unit is not designed to be used by children or mentally immature users.

Only use the unit as described in these operating instructions and user manual. The device must be used according to these specifications.

Never stick any objects in the openings. Do not use the device if any openings are clogged in any way.

When operating the unit it must NEVER be tipped more than 45 degrees to its vertical access in any direction.

Do not immerse the device in water or any other liquid.

Avoid Skin contact with the Steam Cleaner. The high temperatures can cause serious injury and burns.

Never point the device at persons, pets, or plants. Only use the device on surfaces that can withstand high temperatures.

Always unplug the device from receptacle before changing accessories.

Always keep the device out of reach of children.

Never leave the device unattended during operation.

This device is only suitable for use in the home.

Do not use the device in explosive areas.

Do not use the device if there are indications that it is not working properly.

After switching the device off steam can still be released. Therefore, let the unit cool down for 5 minutes after unplugging unit and before storing the unit.

Before storing make sure the water tank is clean and dry.

Protect the device from rain and weather. Store the device in a cool and dry place.

All repairs and service work (including cord repairs) must be done by an authorized service center.

When cleaning electrical appliances (like Stoves) always make sure they are unplugged first.

Electrical equipment may not be cleaned if the steam comes into contact with wires and switches. This includes electrical heaters, lamps, hair dryers, and other units. Steam could cause an electrical default in these devices.

For Household Use Only.

Keep Away from Children.

Always carry the steam mop by the handle.

Always make sure the accessories or nozzles are securely connected before use.

Keep these Instructions in a safe place

**Assembling the Unit**

1. Push the handle into main body until it clicks into place.
2. Push the main body down into the floor attachment until it clicks into place.
3. Put the hard water filter down into the main body (on the main body behind where the tank goes). The filter should be replaced every 6 months of use (see image below) .



4. Put the water tank down into the main body until it clicks into place.

**Filling the Water Tank**

1. Press the water tank release buttons and pull the water tank to remove
2. Pull the tap on the water tank cap to open
3. Fill the water tank with 13.5 oz. of water ,replace the cap and push firmly to close
4. Slide the water tank back into the machine until it clicks into place

**Attaching the Floor Mop Pad**

1. Set floor attachment in mop pad, making sure toggle is located on the back.
2. Pull the mop pad around the floor attachment all the way on all sides.
3. Tighten mop pad by pulling on elastic cord while pushing on toggle.

**Starting the Unit**

Twist the quick release cord wrap clockwise to unwrap the power cord completely and plug into a 120 Volt outlet as described on the Safety Instructions.

The indicator light will illuminate in red when the steam mop is plugged in, then turn to green after ten seconds. When it turns green it is ready to steam.

**NOTE: Upon first use of the steam mop or first use after refilling the water tank, the pump may make a “knocking” sound. This is normal and should only last a few seconds. While in use, the pump will continue to make a soft “knocking” sound. This is also normal.**

With the proper attachments attached correctly the user may begin steaming by pulling and holding the trigger.

### **Accessories**

Your steam mop is designed to clean hard flooring such as ceramic tile, vinyl, laminate, marble, stone and sealed hard wood floors. Use of your steam mop on waxed or some unwaxed floors may result in a diminished glossiness. The steam mop is not for use on unsealed wood floors. For best results test in an inconspicuous area and check the care instructions from your flooring manufacturer.

Plug the unit in and wait 10 seconds. Begin cleaning by slowly passing over surface while pressing the steam on demand trigger to emit steam as needed.

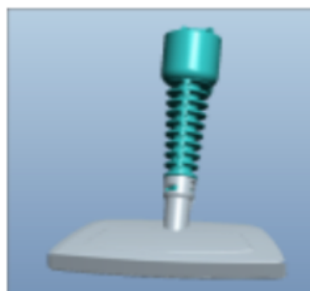
To sanitize an area of your floor, (attack invisible germs and bacteria) place the Steam mop over the spot for a minimum 15 seconds using continuous steam, but no longer than 20 seconds using continuous steam. For larger areas, overlap swivel head placement.

**When the steam mop stops emitting steam, unplug the unit. Simply remove the water tank, refill, and continue cleaning.**

**Cleaning Carpets & Rugs with the Carpet Glider Attachment.** When the LED light turn red to green, to produce steam squeeze the trigger in short bursts. Do not hold the trigger continuously to prevent over wetting floors.

Move the steam mop slowly backwards and forwards across the floor paying particular attention to high traffic areas. Squeeze/release trigger as required. Carpet glider should only be used when refreshing carpets and may not be effective at removing difficult stains.

The Concentration Nozzle & Adapter Tool (tool #1) has to be added to any of the attachments in order for that attachment to work.





## **Use of the Accessories**

Floor Attachment (tool # 12) - The floor attachment on hard floor surfaces should be used with the Floor Mop Pad (#4 on the tool list above) on all hard floor surfaces. It is designed to be maneuverability and get around all hard to clean objects.

Concentration Nozzle & Adapter Tool (tool #1) - The Concentration Nozzle & Adapter Tool is designed for those tough stains that need lots of steam pressure to remove. It is also required for any of the other accessories to attach to the steamer.

Corner Attachment Nozzle (tool #2) – The Corner Attachment Nozzle is designed for those hard to reach places. If the user needs to clean something that is a hard angle that is what this attachment is designed for.

Scraper Attachment (tool #3) - The Scraper Attachment is designed to scrape up those difficult to remove objects. It is commonly used for cleaning stove tops, gum or removing wallpaper.

Carpet Glider Attachment (tool # 5) – The Carpet Glider Attachment is used to steam or clean carpet and rugs. Snap it on over the Floor Attachment (tool #12) and use it to clean carpet and rugs.

Window Track & Tile Attachment (tool #6) – The Window Track & Tile Attachment has many uses. It can be used to scrub and clean tile grout, window tracks, and other hard to clean areas.

Nylon Brush Attachment (tool #7) - The Nylon Brush Attachment is a multi purpose brush designed for more delicate cleaning surfaces. It can be used for many cleaning projects and is one of the most used tools. For more aggressive cleaning (like cleaning the grill) use the Copper Brush Attachment (tool #9) but be warned that that tool can cause scratching on delicate surfaces.

Upholstery & Garment Attachment (tool #8) - The Upholstery & Garment Attachment is designed to clean all fabric surfaces. It can be used with the Upholstery & Garment Pad (#11 on the tool list) as well. It is designed to clean upholstery couches, cushions and car seats. It can also be used to steam and clean clothes. Before cleaning any fabric always make sure it is designed to be steam cleaned first.

Copper Brush Attachment (tool #9) – The Copper Brush Attachment is an all purpose cleaning tool that is designed for the tough cleaning jobs where the surface is not in danger of being scratched. Common uses are cleaning grills or grout. If your cleaning surface is more delicate and in danger of being scratched then use the Nylon Brush Attachment (tool #7) instead.

Window Squeegee Attachment – The Window Squeegee Attachment is designed to clean window surfaces, ceramic tile surfaces, and glass shower surfaces. For instructions on how to use see below:

Window Cleaning -

Step 1 – Spray steam evenly from a distance of 8 inches.

IMPORTANT – Glass can rupture or crack if water is too hot or glass surface is too cold. Before cleaning glass always make sure glass surface is warm.

Step 2 – Switch off the steam and use the Squeegee Attachment to wipe off the moisture moving from top to bottom.

### **Filling the Water Tank During Operation-**

1. Switch the steamer appliance off by releasing the trigger.
2. Unplug the electrical cord from the wall and make sure the operating control light is no longer lit.
3. Follow the steps as stated in “Filling the Water Tank” on page 7 of this manual.

IMPORTANT – Any time you are working around hot water or steam always make sure you're wearing the appropriate safety clothes and gear.

### **Maintenance & Storage- After finished cleaning:**

Unplug power cord from outlet.

Wipe down the unit with a soft cloth. Store upright in a protected, dry area.

Carefully remove mop pad from flip head, as mop pad and lower assembly may be hot.

Any water remaining in the water tank should be emptied prior to machine storage.

Mop pad can be machine washed in warm water. Use only liquid detergents. Do not use fabric softeners. For best results, air dry.

Wrap power cord around quick release cord wrap on side of steam mop.

IMPORTANT – Always empty the steam cleaner's tank of all liquid and leave the unit open to dry before storing.

### **WARRANTY INFORMATION-**

#### **Warranty Information for the Prolux S7 Steamer**

The manufacturer Prolux provides warranty of this steam cleaner for a time period of 1 year on the appliance, starting from the date on which the appliance is sold to the end user. Accessory Tools are covered for a period of 90 days. The repairs under warranty may only be carried out by an authorized service center. In case of warranty contact your authorized Prolux dealer you bought the unit from. In case of warranty issues the customer is responsible for paying for all shipping costs to and from the warranty center and Prolux is responsible for paying for all parts and labor associated with the warranty.

claim. When making a claim under the warranty, the proof of purchase (with purchase date) must be submitted. The warranty will not apply in cases of:

- Non Normal wear and tear (example- commercial use)
- Incorrect use, e.g. overloading of the appliance, use of non-approved accessories
- Use of force, damage caused by external influences
- Damage caused by non-observance of the user manual, e.g. connection to an unsuitable cord

supply or non-compliance with the installation instructions or being dropped.

- Partially or completely dismantled appliances.

PROLUX OR ITS DEALERS ARE NOT LIABLE FOR INCIDENTAL OR CONSEQUENTIAL DAMAGES OF ANY NATURE ASSOCIATED WITH THE USE OF THIS PRODUCT. OUR LIABILITY WILL NOT EXCEED THE PURCHASE PRICE OF THE PRODUCT.

Some states do not allow the exclusion or limitation of incidental or consequential damages, so the above limitation or exclusion may not apply to you.

**\*EXCEPTIONS AND EXCLUSIONS FROM THE TERMS OF THE LIMITED WARRANTY**

THIS WARRANTY IS EXCLUSIVE AND IN LIEU OF ANY OTHER WARRANTIES EITHER ORAL OR WRITTEN. ANY IMPLIED WARRANTIES WHICH MAY ARISE BY OPERATION OF LAW, INCLUDING THE IMPLIED WARRANTIES OF MERCHANTABILITY AND FITNESS FOR A PARTICULAR PURPOSE, ARE LIMITED TO THE ONE YEAR DURATION FROM THE DATE OF PURCHASE AS DESCRIBED ABOVE.