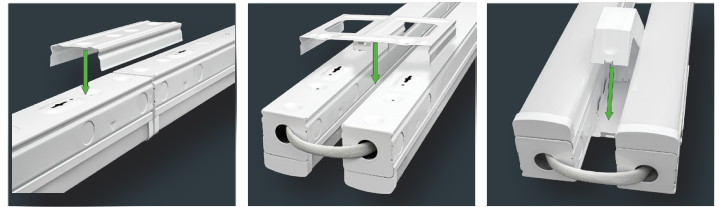
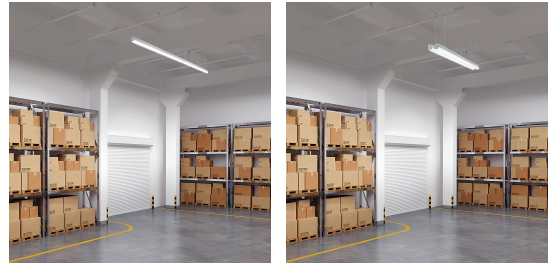


The Most Versatile LED Strip Light Available!

Best 8' Strip light,
ships in 4' box



ADVANTAGE



✓ One Product = Many Mounting Solutions!

- 4' Single strips – mounted individually
- 2 x 4' side by side – great for low/high bay installations
- 8' Strip – single or continuous strip up to 40'
- Grid layout – using optional brackets

✓ Future proofed! Replaceable light engine & driver

- ✓ Value priced 0-10V photo sensor
- ✓ Tandem and parallel mounting brackets included
- ✓ Converts to 11,000 lumen controllable warehouse high bay fixture

“Versa”-Tile Mounting Options And Locations!

- Flush or suspended mounting
- Wall or ceiling installations
- Grocery, retail, office, factory and warehouse installations - superb high/low bay or aisle lighting solution!
- Tandem and parallel mounting brackets included

Power

- 11,000 lumen output (5500 LM/4' strip)
- 120-277V

Control

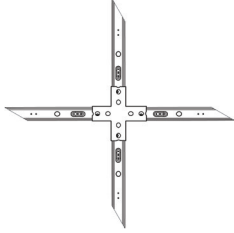
- Optional motion control with 3 time settings
- 0-10V dimming

Robust, Intelligent Construction

- Shatterproof PMMA lens will not discolor over time
- Industrial grade powder coated housing
- Extra wire length included plus quick-connects for easy installation
- UL damp location rated

The Most Versatile LED Strip Light Available!

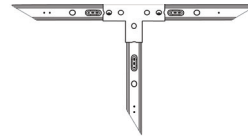
OPTIONAL BRACKETS



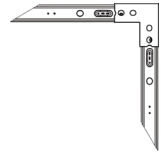
X BRACKET



MULTI-ANGLE ADJUSTABLE



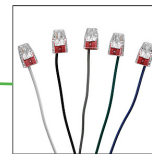
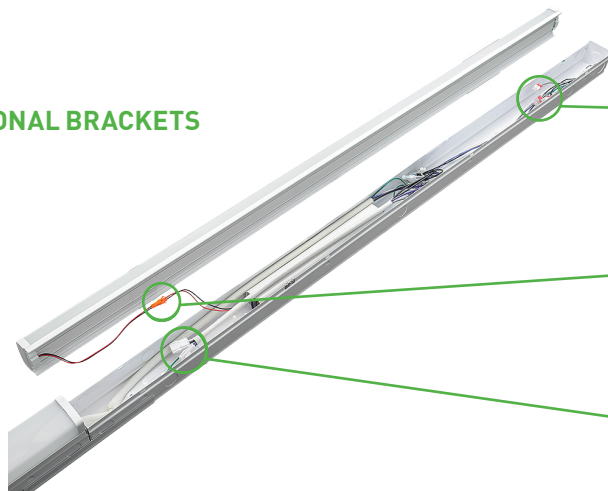
T BRACKET



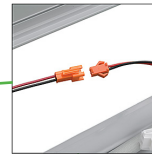
L BRACKET

QUICK CONNECTORS ALLOW FOR EASY INSTALLATION

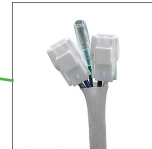
OPTIONAL BRACKETS



Multi-voltage wiring with quick connectors



Lamp detaches for easy installation



Link additional fixtures easily with installed wiring harness

