



Monitor and Detect Lint Build-up  
in Your Dryer Duct

## LintAlert Model ALRT31 Installation Manual

**NOTE: DO NOT RETURN  
THIS PRODUCT TO THE STORE**

(Many problems can be resolved without returning this product to the retailer.)

If you are unhappy or there are technical issues, please call us at: 561-972-8381

**Congratulations – Your In-O-Vate Technologies LintAlert dryer exhaust monitor is the most advanced, innovative and effective pressure sensing monitor for the dryer on the market today. It is designed to provide progressive notice of airflow blockage in your dryers' exhaust duct.**

### Introduction

The U.S. Consumer Product Safety Commission estimates that 15,500 clothes dryer fires occur in U.S. homes annually, averaging about 10 deaths, 300 injuries and \$85 million in direct property damage. Lint build-up and lack of maintenance is the number one cause of dryer fires. Your LintAlert home safety device for the clothes dryer can provide a visual indication of how much additional pressure exists over time due to lint buildup or blockage of some sort in the duct work between the dryer and the exterior termination vent.

### How it Works

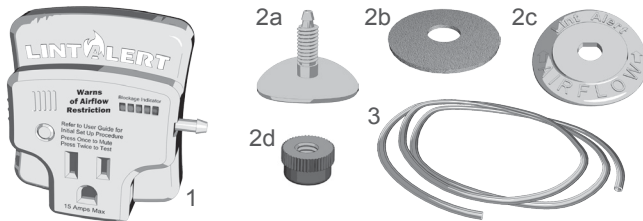
The LintAlert monitors and displays the back pressure levels found in the exhaust conduit of the dryer. Pressure levels found in the duct work between the back of the dryer and the exterior vent hood typically increase over time due to lint build-up or other restrictions like birds nest or vent hoods that become inoperable. The LintAlert incorporates a very innovative and responsive digital low differential air pressure sensor. Coupled with a smart programmable integrated microprocessor, the device can determine if your dryer is running, and what levels of pressure exist. When the pressure level reaches a point that is unsafe the "alarm state" will indicate its time to clean out the duct work. Prior to the alarm state, a slow progression of the LED light bar will indicate fractional build-up.

### Before You Begin (Items in Package)

Please review the parts and make sure they are present. Refer to the Installing the LintAlert section for proper installation.

1. Alert Module: the plug-in component that contains the electronics and air pressure sensor (120V 60Hz 15 AMPS max pass through).

2. Tap Fitting: four pieces (2a. umbrella shaped tap fitting, 2b. felt washer, 2c. curved washer and 2d. nylon thumb nut).
3. Tubing: approximately 6 feet of 1/8" inside diameter by 1/4" outside diameter clear vinyl PVC.



**NOTICE: Please Read This Prior to Calibrating the LintAlert: In order for the LintAlert to accurately monitor the air pressure levels in your specific dryer duct system and warn of any unsafe levels, the device needs to be calibrated to your particular system at a LIKE NEW or VERY CLEAN STATE.**

In technical terms, the clean pressure value must be recorded to memory in order to provide an accurate scale of build-up intervals. The LintAlert will not initialize or may not initialize correctly if the dryers' exhaust condition is not in a like new clean state. This like new state can be achieved by hiring a professional duct cleaner or doing it yourself with a dryer vent cleaning kit. These kits are readily available online or at hardware stores and are comprised of a rotating action auger brush and flexible rods.

### Technical Support Options:

Online: Extensive FAQ's Available – [www.lintalert.com](http://www.lintalert.com)

Phone: 561-972-8381

Email: [support@lintalert.com](mailto:support@lintalert.com)

Hours: 7 am to 11 pm EST, 7 Days a Week

### Manufactured by:

**In-O-Vate Technologies, Inc.**

**810 Saturn Street, Suite 21 Jupiter, FL 33477**

US Patent 6,785,981, Others Pending Copyright ©2010 In-O-Vate Technologies, Inc. All rights reserved. LintAlert is a registered trademark of In-O-Vate Technologies, Inc. Proudly made in the U.S.

### Registration

Congratulations on your purchase of the LintAlert®. To fully benefit from the support that In-O-Vate Technologies offers, please register your product at [www.lintalert.com/register.htm](http://www.lintalert.com/register.htm).

### Limited Warranty and Service

In-O-Vate Technologies warrants to the original purchaser that the enclosed dryer exhaust monitoring system will be free from defects in materials, workmanship or design under normal use and service for a period of one year from the date of purchase provided that it is properly used as prescribed by the owner's guide. The obligation of In-O-Vate Technologies under this warranty is limited to, at our option, repairing or replacing the LintAlert or any part which we find to be defective in material, workmanship or design, free of charge to the customer provided that prior to any return, a Return Authorization (RA) number and shipping instructions are attained by contacting In-O-Vate Technologies Customer Service.

This warranty shall be void if registration is not completed and sent to In-O-Vate Technologies, Inc. customer services within 30 days of purchase. This warranty shall not apply to the LintAlert system if it has been damaged, modified, abused or altered after the date of purchase or if it fails to operate due to improper maintenance or problems caused by inadequate A.C. electrical power or power fluctuations.

THE LIABILITY OF IN-O-VATE TECHNOLOGIES OR ANY OF ITS PARENT OR SUBSIDIARY CORPORATIONS ARISING FROM THE SALE OF THIS DRYER EXHAUST MONITORING DEVICE OR UNDER THE TERMS OF THIS LIMITED WARRANTY SHALL NOT IN ANY CASE EXCEED THE COST OF REPLACEMENT OF THE LINTALERT MONITORING DEVICE AND, IN NO CASE, SHALL IN-O-VATE TECHNOLOGIES OR ANY OF ITS PARENT OR SUBSIDIARY CORPORATIONS BE LIABLE FOR CONSEQUENTIAL LOSS OR DAMAGES RESULTING FROM THE FAILURE OF THE LINTALERT MONITORING DEVICE OR FOR BREACH OF THIS OR ANY OTHER WARRANTY, EXPRESS OR IMPLIED, EVEN IF THE LOSS OR DAMAGE IS CAUSED BY THE COMPANY'S NEGLIGENCE OR FAULT. While this warranty gives you specific rights, you may also have other rights which vary from state to state. Since some states do not allow limitations on the duration of an implied warranty or do not allow the exclusion or limitation of consequential damages, the above limitations or exclusions may not apply to you.

If, after reviewing this manual, you feel that your LintAlert dryer exhaust monitoring device is defective in any way, do not tamper with the unit or return it to the store you bought it at. Obtain customer or technical service in the U.S. or Canada, by calling In-O-Vate Technologies at 561-972-8381. THIS IS IN-O-VATE TECHNOLOGIES COMPLETE WARRANTY FOR THE PRODUCTS. The above warranty may not be altered except in writing by In-O-Vate Technologies.

## Installing the LintAlert®

Installation and calibration is a fairly quick and straight forward process.

1

### Step One

**Confirm that the in-the-wall duct system has been completely cleaned and in like-new condition (read Notice on reverse side).** In-O-Vate Technologies, as well as the leading dryer manufacturers, strongly recommend the use of the semi-rigid aluminum flex as transition hose between the wall outlet and the dryer. The wire bound foil flex, although not as efficient, will work comparably with the LintAlert. If you have white vinyl flex on your dryer, please take this opportunity to replace it, as it's been well documented to be extremely unsafe and associated with many dryer fires.

2

### Step Two

Disconnect the new or existing exhaust hose from where it connects to the exhaust port on the back of the dryer. Favoring the middle to outside radius of the first bend, **carefully poke a ¼" hole in the hose, close to where the exhaust port connects.** (Figure 1). Be sure to leave room for the flex hose to re-secure to the dryers' exhaust terminal.

3

### Step Three

Take the umbrella shaped tap fitting, (Figure 3 - A) and slide it up inside the exhaust hose and through the hole you just made. It is important to rotate the fitting so that the curved contour of the fitting matches that of the transition hose. The felt washer (B) will go on next, followed by the curved washer (C). Finally, twist the nylon thumb-nut on and finger tighten to ensure that no air can escape (Figure 4). Connect one end of the clear vinyl tubing to the tap fitting (while supporting it from within the flex hose) and reattach the existing exhaust hose to the dryer's exhaust port.

4

### Step Four

Move the dryer back into place and plug the alert module into the nearest un-switched 110v AC power outlet **prior to attaching the tubing to the barb.** Important Note: Cut the length of the clear vinyl tubing to minimize any sag or droop in the tubing, as this could allow condensation build-up within the tubing to puddle thus creating an air block (Figure 5). Insert tubing over hose barb on LintAlert.

5

### Step Five [Calibration]

Clean the dryer's lint screen. Begin a drying cycle with NO clothes in the drum and at your usual temperature setting. **While the dryer is running, press and hold the LintAlert button for about 6 seconds, until all five LEDs progressively light up and you hear a chime tone (records "clean value" pressure level).** After about 2 seconds, you should observe that the first green LED is illuminated and the logo lens, "LintAlert," is steady blue. Note: Any subsequent calibration attempts will require an approximate 12 second press of the button. The LintAlert should now be in a normal monitoring mode. Refer to the troubleshooting section of this manual or online if this normal state is not observed.

Troubleshooting Section:

**Notice:** Works on all dryers except those with dual motor technology and dryers that share exhaust systems like typically found in high-rise structures.

**Tubing does not reach:** The tubing can be extended or replaced with similar diameter tubing. We offer longer tubing lengths in our online store, but the same tubing (1/8" ID ¼" OD) is usually available at aquarium or pet outlets. Results with lengths up to 24 feet were shown to be consistent. It is important that the tubing placement and type of tubing prohibit being pinched or kinked. Also, a positive slope with no sagging is necessary in preventing any "in-line" condensation within the clear vinyl tubing. Although rare, condensation build-up within the tubing could puddle thus creating an air block.

**No 110v outlet near my dryer:** In most cases, the washer and dryer reside side by side, and the washer uses 110v. If the washer outlet is hidden or too far from the dryer's location, then the first suggestion is to extend the tubing (see above). The second alternative would be to purchase and mount a multi outlet power bar above the dryer for the LintAlert to plug into.

**LED Display During Calibration:**

■■■■■ means no pressure was observed, either due to dryer not ON, tubing not connected or LintAlert was plugged in with tubing connected and dryer running. In the latter case, Factory Reset (see below).

■■■■■ means too much pressure was present, likely the exhaust duct was never cleaned or there still exists blockage of some sort.

■■■■■ means calibration was successful and after 2 seconds the first LED will illuminate.

**Monitoring Mode:**

■■■■■ dryer not ON, tubing detached, or a very recent calibration  
■■■■■ normal (recent calibration), ■■■■■ approx. 20% blocked,  
■■■■■ approx. 32% blocked, ■■■■■ approx. 45% blocked,  
■■■■■ approx. 60% blocked, time to clean out the exhaust duct.

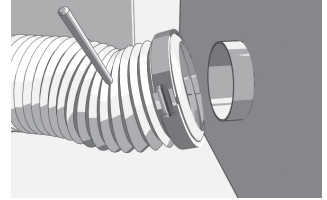
**Restore to Original Calibration Level:** Unplug the unit for 3 seconds and insert back into plug.

**Factory Reset:** With dryer off, unplug LintAlert then plug back in while pressing button and continue to hold till chime is heard (approx. 2 secs).

Additional troubleshooting guides and updated manuals can be found online. See FAQs online and on the product packaging.

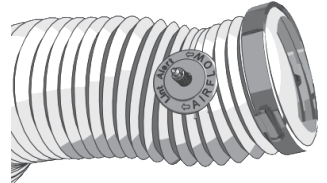
Version 8.1

Figure 1



Poke ¼" hole in flex hose near dryer connection.

Figure 2



Insert tap fitting and assemble related parts.

Figure 3

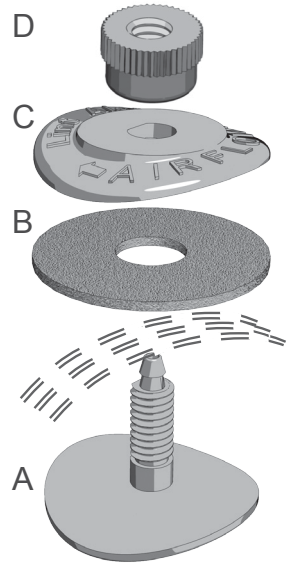
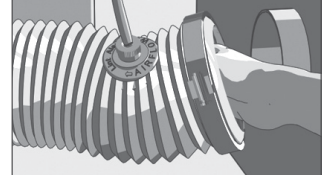
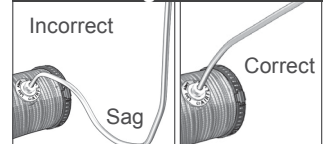


Figure 4



Connect tubing between tap fitting and alarm module.

Figure 5



Cut tubing length to minimize any sag. Proceed to calibrate unit (step 5).