



## **USER'S MANUAL**

*For Solar-Powered Fence Controllers*

### **Part I: Fence Controller Installation**

<i>Before You Start . . . . .</i>	<i>p. 2</i>
<i>Fence Controller Installation . . . . .</i>	<i>p. 4</i>
<i>Operation SP3/LIS3 . . . . .</i>	<i>p. 9</i>
<i>Operation SP10/LIS10 . . . . .</i>	<i>p. 10</i>
<i>Operation SP30 . . . . .</i>	<i>p. 11</i>
<i>Replacing battery . . . . .</i>	<i>p. 12</i>

### **Part II: Electric Fencing Basics**

<i>Electric Fencing Basics . . . . .</i>	<i>p. 15</i>
<i>Electric Fence Components . . . . .</i>	<i>p. 16</i>
<i>Grounding System . . . . .</i>	<i>p. 18</i>
<i>Fence Posts . . . . .</i>	<i>p. 20</i>
<i>Insulators . . . . .</i>	<i>p. 22</i>
<i>Fence Wire . . . . .</i>	<i>p. 23</i>
<i>Gate Openings . . . . .</i>	<i>p. 25</i>
<i>Lightning/Surge Protection . . . . .</i>	<i>p. 26</i>
<i>Electric Fence Design . . . . .</i>	<i>p. 28</i>
<i>Testing/Troubleshooting . . . . .</i>	<i>p. 33</i>
<i>Fence Controller Warranty . . . . .</i>	<i>p. 36</i>

**SAVE THESE INSTRUCTIONS**

## Before You Start

All Zareba brand pulse-type electric fence controllers meet Underwriters Laboratories (UL) standards for safety.

- ▲ **WARNING:** *Read ALL these instructions.* Only use electric fence controller products for the purpose intended as defined in this manual.
- ▲ **WARNING:** *Never run more than one fence controller on the same fence line at one time. The pulse time between the fence controllers will be too close together and could be hazardous to animals and people. It could also damage your fence controllers.*
- ▲ **WARNING:** *Install fence lines powered by separate fence controllers far enough apart to prevent contact with both fence lines at the same time. Simultaneously touching two fences powered by separate energizers could be hazardous.*
- ▲ **WARNING:** *In brushfire-prone areas, turn the fencer off on extremely dry days. For backup, be sure others know how to disconnect the fence controller. Also, never disconnect wires or approach a fence during lightning storms.*
- ▲ **WARNING:** *Do not operate fence controllers near any combustible materials including gasoline, kerosene and cleaning fluids.*
- ▲ **WARNING:** *Never electrify barbed wire or similar fence types where an animal or human may become tangled in the fence or caught against the fence.*
- ▲ **WARNING:** *To reduce risk of electrical shock, do not remove the fence controller cover. Refer to service personnel.*



- ▲ **WARNING:** Check local zoning laws for electric fencing guidelines in your area. Also check with local utilities before digging to identify any buried cables or natural gas lines.

### **Tools Required**

- Wire cutter/stripper (part no. FWC-1)
- Flathead, phillips and #15 torx screwdrivers
- Adjustable wrench
- Voltage tester (part no. DEFT-1 or RSVT8)

### **Other Required Components**

- Two lengths of 20 KV insulated hook-up wire (one long enough to connect fence controller to ground system and one long enough to connect fence controller to fence line)
- Fence line connector (part no. 07110-96 for steel or poly wire; PRS2 for poly rope; or PTCC1 for poly tape)
- 6- to 8-foot ground rod(s) (part no. GR8 or 07104-96)
- Ground rod clamps—one per ground rod (part no. CGR1 or 07105-96)

# Fence Controller Installation

## STEP 1: Charge Battery

Models SP3/LIS3/SP10/LIS10

Model SP30

*NOTE: Make sure switch is in the OFF (0) position.*



- Battery is pre-installed in all models. With fence controller in OFF position, allow the sun to fully charge the battery for three days to ensure optimal battery life.

## Solar Battery Maintenance

- Low battery can be recharged by removing battery and using 6-volt charger (part no. SBC1).
- When not in use, fully charge battery before storage.

▲ **WARNING:** Do not charge battery with an automobile battery charger as this will damage battery.

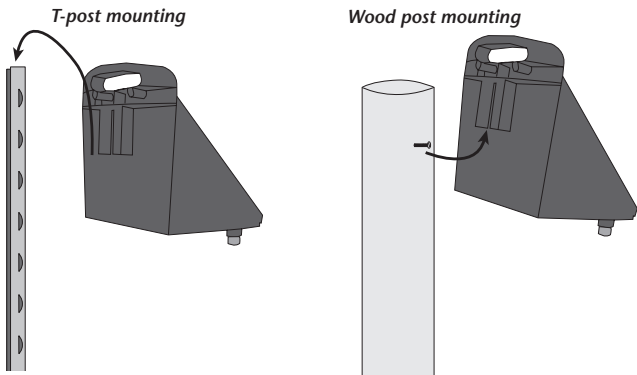
The normal life of the internal battery is typically three to four years provided it is properly maintained. A solar fence controller that is being stored should be placed in the sun for three days every three months to recharge the battery. Any fence controller in use that doesn't receive sunlight for a period of two weeks should be recharged for three days in sunlight with the fence controller turned OFF.

## STEP 2: Mount Fence Controller

**IMPORTANT:** Fence controller must be kept off ground.

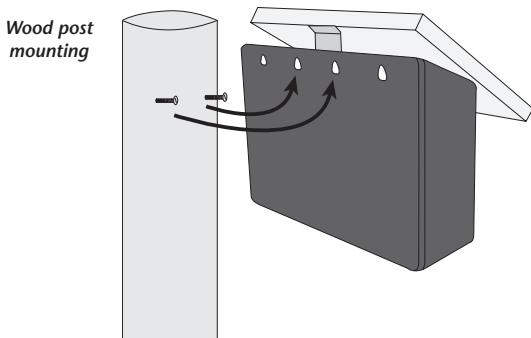
- Mount in a location that receives full sunlight throughout the day facing noontime sun (due south in the northern hemisphere).
- Keep solar panel clean and free of dust using a soft cloth and water. Do NOT use detergent or abrasive cleaners on solar panel.

### Models SP3/LIS3/SP10/LIS10

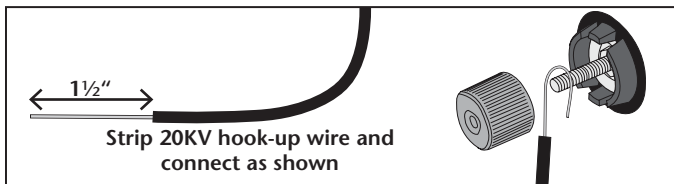


---

### Model SP30

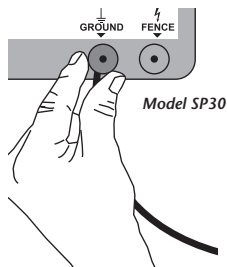
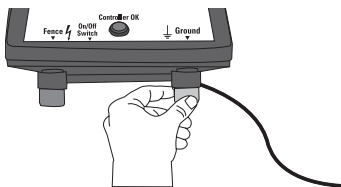


### STEP 3: Connect Ground and Fence Terminals



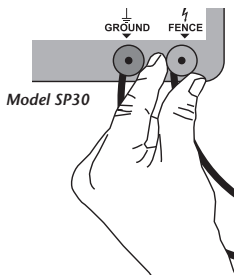
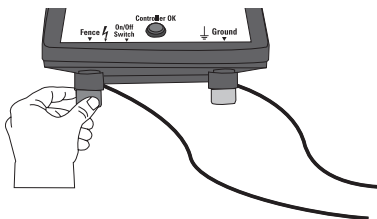
#### Connect hook-up wire to GROUND terminal

*Models SP3/LIS3/SP10/LIS10*

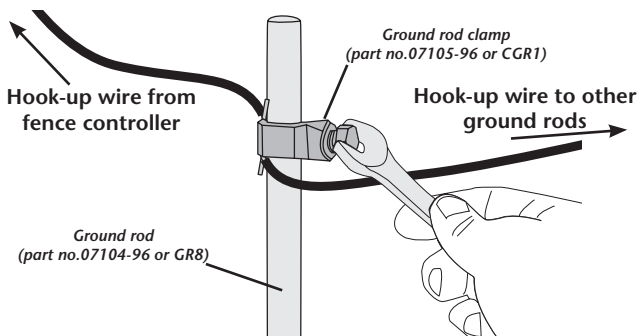


#### Connect hook-up wire to FENCE terminal

*Models SP3/LIS3/SP10/LIS10*



## STEP 4: Connect to Ground System



**NOTE:** Connect additional ground rods with hook-up wire and ground rod clamps

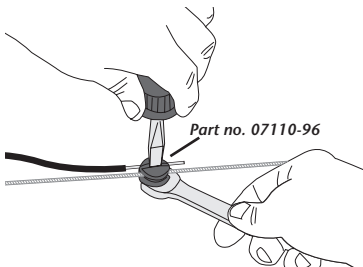
### Check ground system reliability

- IMPROPER GROUNDING WILL AFFECT THE PERFORMANCE OF YOUR FENCE CONTROLLER! See page 18 for more information about proper grounding.

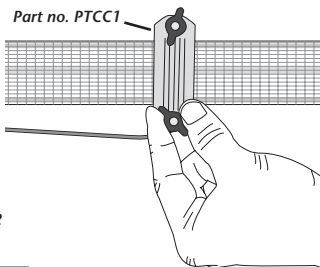
- ① **Tip:** The fence controller must be grounded sufficiently for the system to work effectively. Improper grounding can also cause interference on telephone lines, radios and television and could invalidate your warranty.

## STEP 5: Connect to Fence Line

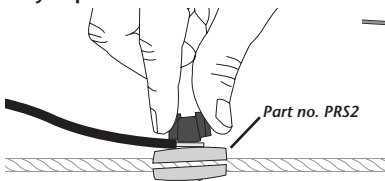
Aluminum/Steel/Poly wire connection



Poly tape connection



Poly rope connection



### Check fence system reliability

- IMPROPER CONNECTION POINTS WILL AFFECT THE PERFORMANCE OF YOUR FENCE CONTROLLER!
- Make sure splices and insulators are sound and secure.

## STEP 6: Power Fence Controller

Turn fence controller on.

Models SP3/LIS3/SP10/LIS10

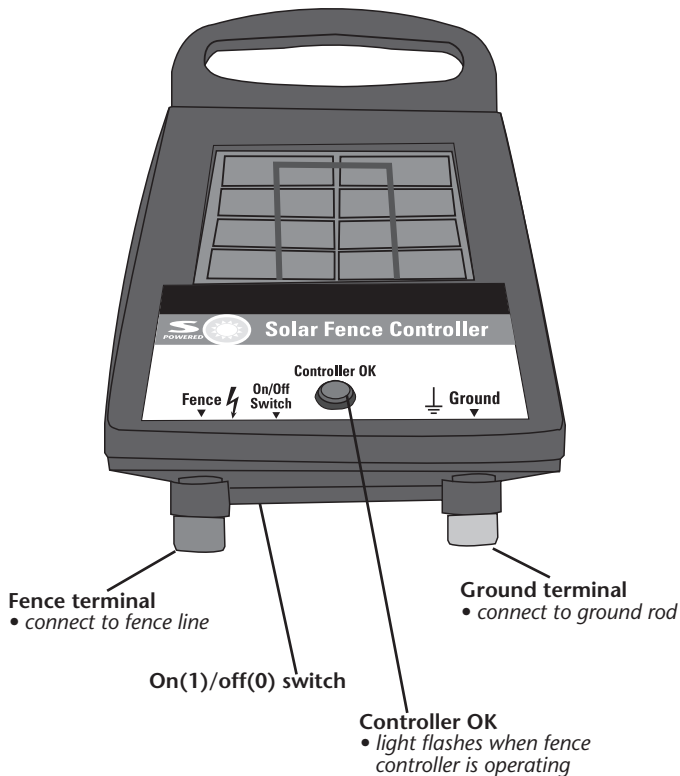
Model SP30

**NOTE:** Fence controller will be outputting voltage at this point— to avoid shock do not touch fence terminal or fence wires.

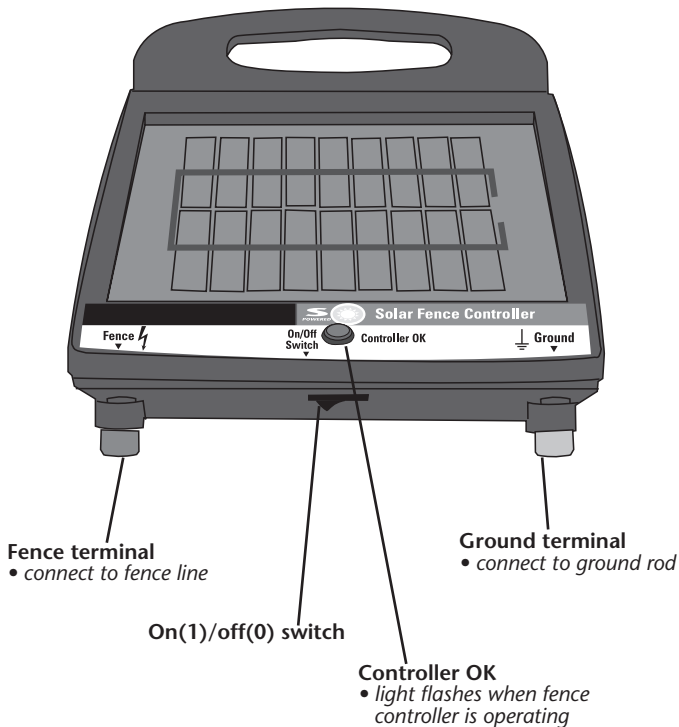




# Operation-SP3/LIS3



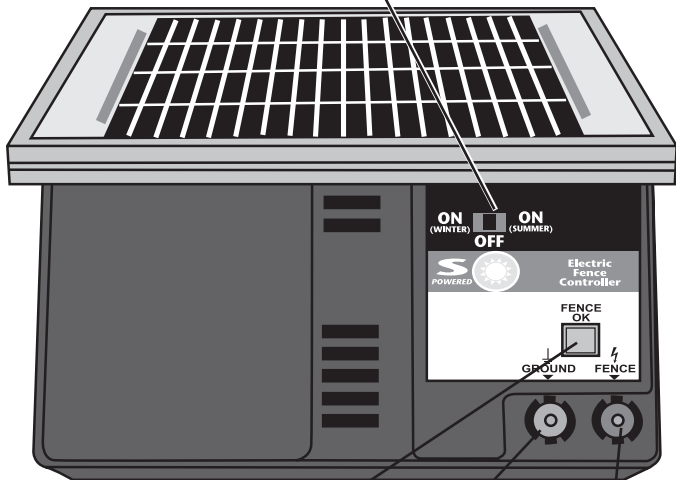
# Operation-SP10/LIS10



# Operation-SP30

## On/off switch

- *On (winter): use when less than 12 hours of sunlight or to conserve battery when less output is needed*
- *On (summer): use when over 12 hours of sunlight*



## Fence OK

- *light flashes when voltage is on fence line*

## Ground terminal

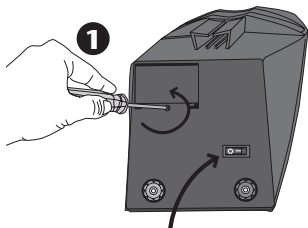
- *connect to ground rod*

## Fence terminal

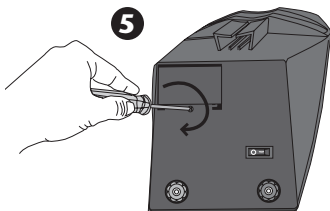
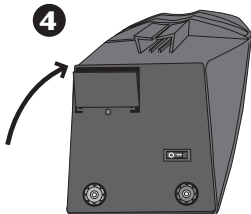
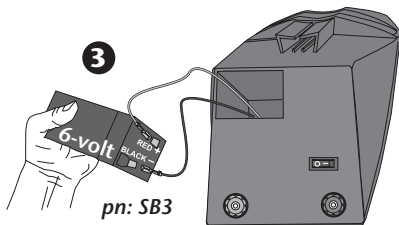
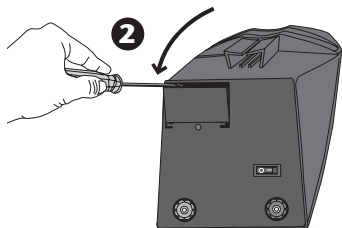
- *connect to fence line*

## Model SP3/LIS3 – Replace Battery

NOTE: Battery comes pre-installed.

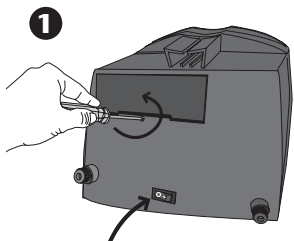


\*Turn power switch to off(0)

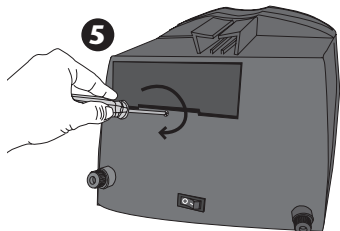
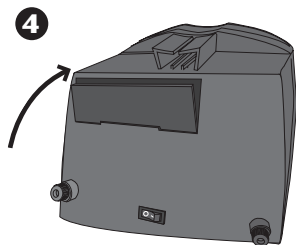
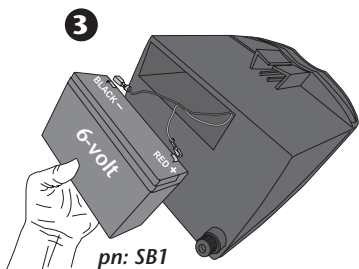
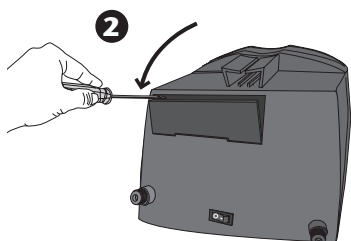


## Model SP10/LIS10 – Replace Battery

NOTE: Battery comes pre-installed.



\*Turn power switch to off(0)



# Model SP30 – Replace Battery

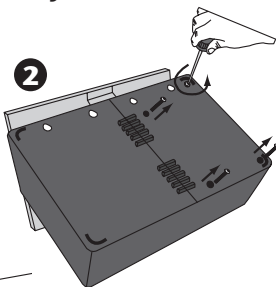
NOTE: Batteries comes pre-installed.

1

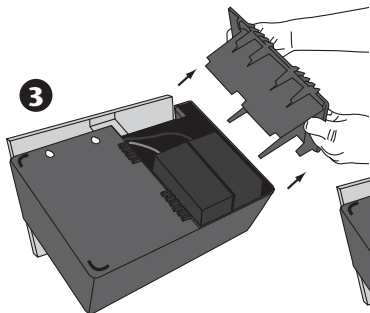


\*Turn power switch to off

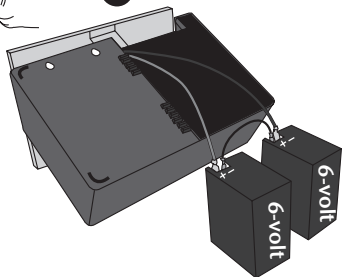
2



3

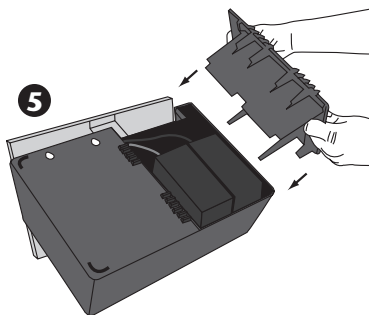


4

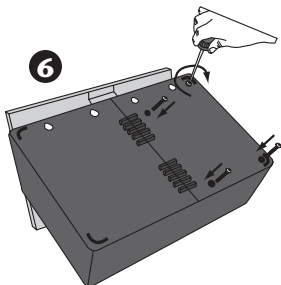


pn: 07068-92

5



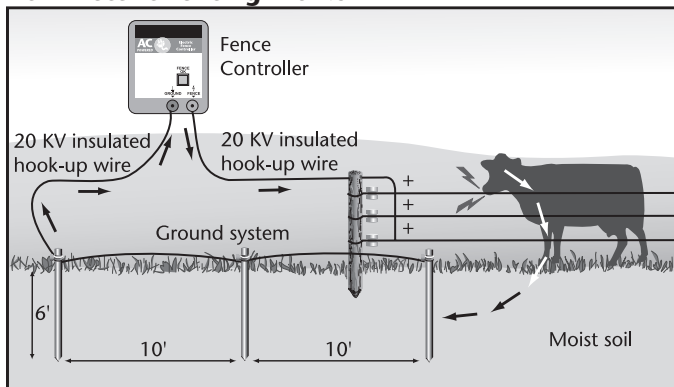
6



# Electric Fencing Basics

Electric fencing is an easy-to-install system for containing animals or keeping them out. A short, safe pulse of electricity creates a psychological barrier that trains animals to avoid the fence. In order for the animal to feel a shock, the voltage produced by the fence controller must penetrate the animal's hair, hide and hoof.

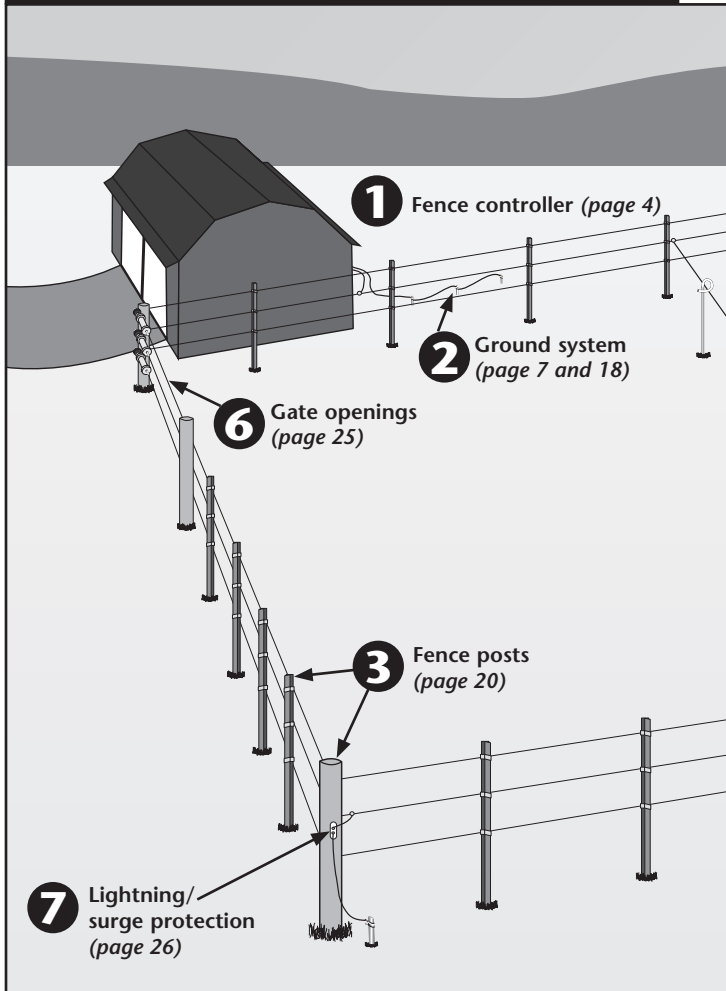
## How Electric Fencing Works



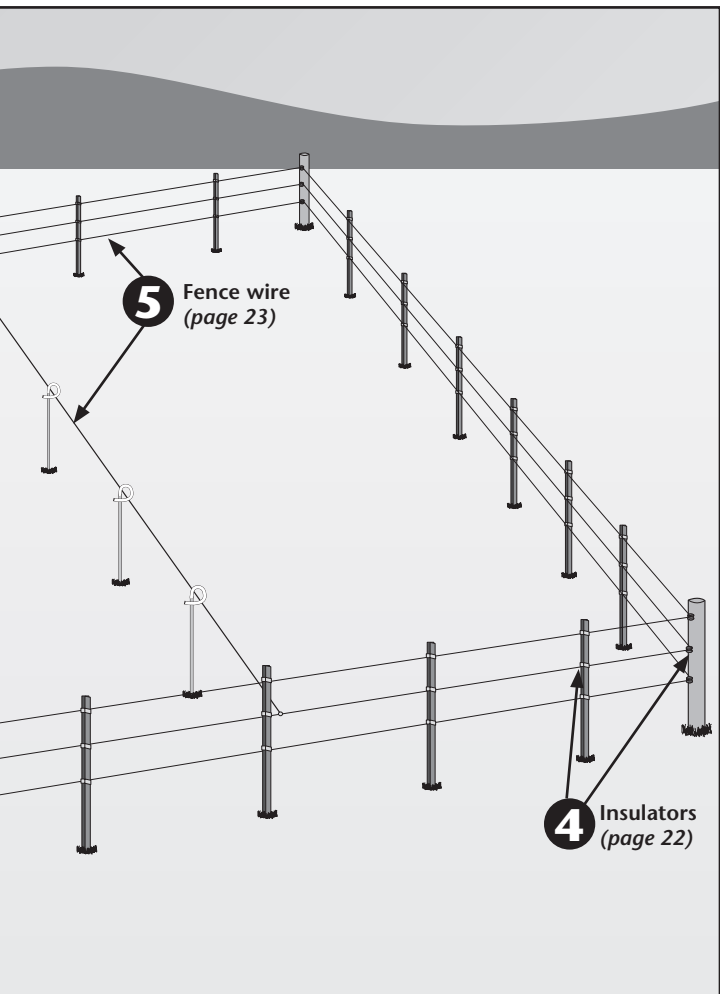
The system works when an animal provides an electrical path by touching the fence wire and the earth simultaneously. The electricity then passes through the animal, into the soil and back to the ground rods, which are connected to the fence controller. At that point the circuit is complete and the animal instantly receives an electrical shock.

- ① **Tip:** For permanent, high tensile fence installation instructions, refer to Zareba's *High Tensile Electric Fence Guide* available at [zarebasystems.com](http://zarebasystems.com).

# Electric Fence Components





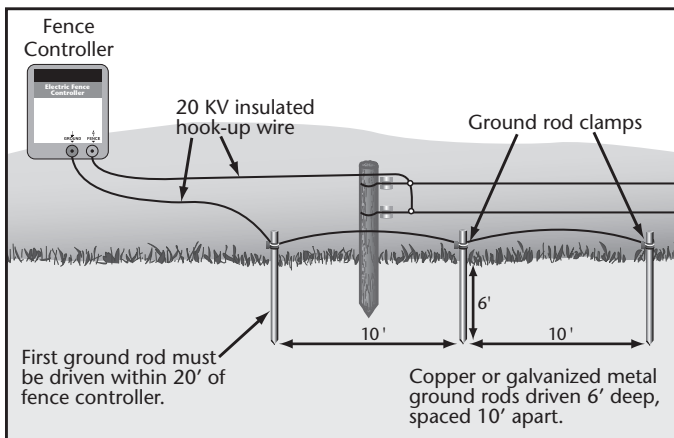


## 2 Grounding System

### Overview of Grounding System

An effective ground system consists of:

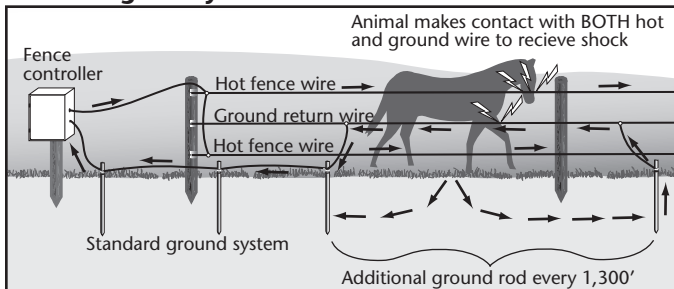
- (3) 6' to 8' ground rods (part no. 07104-96 or GR8)
- (3) ground rod clamps (part no. 07105-96 or CGR1)
- 20 KV insulated hook-up wire (part no. UGC50, UGC250, 1404-92 or 7090-92)



See page 7 for detail on connecting ground system.

- ① **Tip:** Watering or sprinkling the soil around the ground rods in dry weather will improve ground system performance.

## Grounding in Dry or Frozen Ground

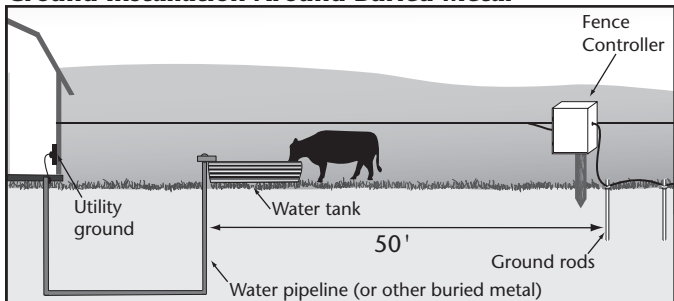


In dry, sandy or frozen soil a typical grounding system is insufficient because electricity can not flow back to the fence controller. To compensate, create a ground wire return system with one fence wire carrying electricity back to the fence controller's ground terminal. Run the ground return wire between hot/electrified wires and drive a 6-foot galvanized steel or copper rod every 1,300 feet. Regardless of the soil conditions, when the animal contacts the hot and ground wires simultaneously, they will feel a shock.

① **Tip:** Because the animal must contact the hot and ground return wire **SIMULTANEOUSLY**, we recommend these two wires be spaced within two to three inches of each other.

▲ **WARNING:** Do not install ground rods within 50 feet of a utility ground rod, buried telephone line or buried metal water line, as they may pick up stray voltage.

## Ground Installation Around Buried Metal

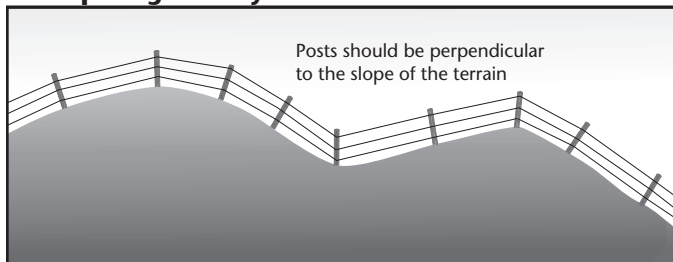


## 3 Fence Posts

Fence posts fall into two categories: corner/gate posts, which must withstand tension; and line posts, which simply support the fence line between corner/gate posts. Post material varies and should be selected by fence type.

Electric fencing will usually use fewer posts than conventional barbed or woven-wire fencing, making it less expensive and easier to install. Most posts are spaced 12–20 feet apart depending on terrain and animal being controlled.

### Post Spacing on Hilly Terrain



Don't try to space posts evenly. In level terrain, posts can be spaced farther apart; for uneven terrain, a post should be placed at high and low points; and on hillsides, posts should be installed perpendicular to the slope. This keeps the wire at the proper height and prevents it from binding on insulators or clips.

## Post Selection Guide

<b>Post Type:</b>	<i>Wood Post</i>	<i>Plastic Step-in Post</i>	<i>Steel T-post, U-post, Y-post</i>	<i>Fiber-glass T-post/Rod Post</i>	<i>Metal Rod Post</i>
<b>Used for:</b>					
Corner Posts	<b>X</b>		<b>X</b> ( <i>limited</i> )		
Line Posts	<b>X</b>	<b>X</b>	<b>X</b>	<b>X</b>	<b>X</b>
<b>Use With Fence Type:</b>					
Portable		<b>X</b>		<b>X</b>	<b>X</b>
Semi-Permanent	<b>X</b>		<b>X</b>		
Equine	<b>X</b>	<b>X</b>	<b>X</b>	<b>X</b>	<b>X</b>
Permanent High Tensile	<b>X</b>		<b>X</b>		

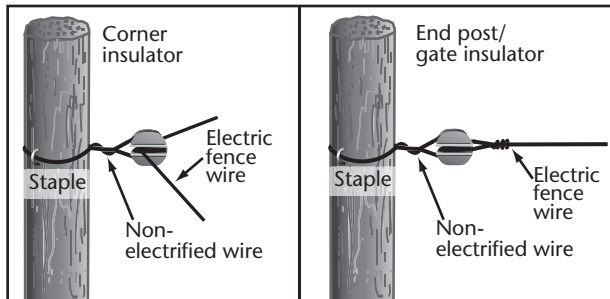
## 4 Insulators

Insulators isolate the electric fence wire(s) to prevent shorting and electric current leakage, while also keeping the wires properly spaced.

Select your insulators to fit the type of post and fence wire you are using. We recommend Red Snap'r® plastic insulators designed for every type of post – wood, T-posts, rod, corner, or chain link fencing. These insulators are available with various front ends to accommodate your selection of steel or poly wire, poly tape or poly rope.

- ① **Tip:** To prevent energy drain, routinely check to ensure insulators are clear of cobwebs and that electrified wires do not touch posts.

### Installation of Corner/End Post/Gate Insulators



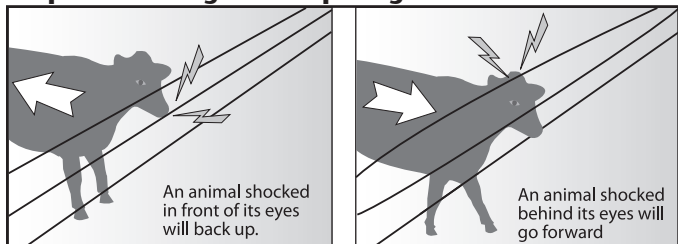
## 5 Fence Wire

Electric fence wire carries the electrical current from the fence controller around the perimeter of the fence. Galvanized steel and aluminum wire carry electricity best. Poly wire, tape and rope have strands of conductive wire twisted or woven into the fabric and are ideal for electric fencing because of its ease-of-use, light weight and visibility.

- ① **Tip:** For equine enthusiasts, we recommend using 1½ inch white poly tape or ¼ inch white poly rope. They are highly visible, easy to install and safer than steel wire for horses.

The height and spacing of the wires will vary with the animal being contained (or kept out). Always position one electrified wire at the animal's shoulder height; the animal will hit the fence with its nose, making it back up. Proper spacing of the wires for the animal controlled is more important than overall fence height.

### Proper Wire Height and Spacing



When installing fence wire, pull wire taut to maintain the same height and spacing between the posts.

- ① **Tip:** To prevent energy drain, keep electric fence wire clear of vegetation or objects touching the fence line.

To maximize power on the fence, good electrical connections and splices are critical.

## Splicing Techniques

### Metal Wire



Never use loose or single-wrap splices

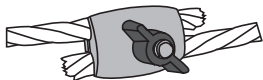


### Poly Wire



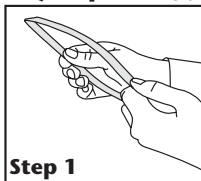
Tie any simple knot such as a square knot. Strip back and cut poly strands leaving two inches of conductive wires exposed. Twist or "pigtail" wires together.

### Poly Rope (using part no. PRS2)

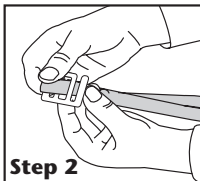


Stagger ends of poly rope and tightly secure using poly rope splicer.

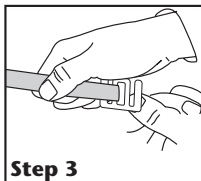
### Poly Tape (using part no. SBS4 or SBL4)



Make one-foot loop.



Insert poly tape through center of buckle and slip closed end over the upright flange.



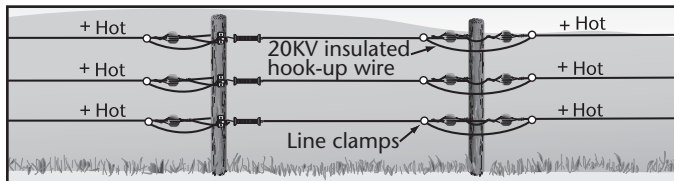
Pull poly tape tight and over flange.



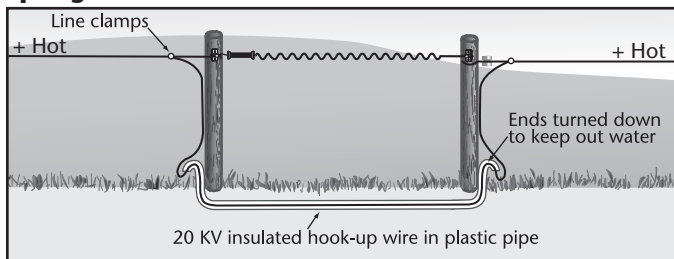
# 6 Gate Openings

Gate openings can be installed a variety of ways. Typically the same fence wire is used across the opening. If a metal gate or spring gate is used, 20 KV insulated hook-up wire should be used to carry the electrical current under the gate opening. NOTE: Refer to page 8 for information on how to make fence line connections.

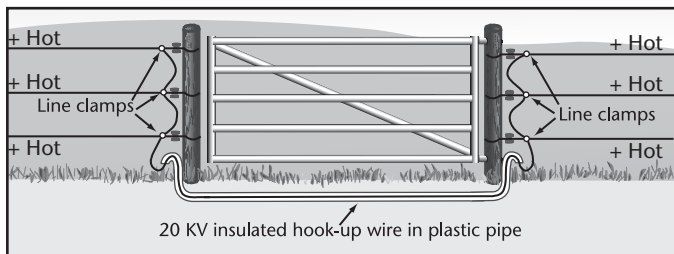
## Standard Gate Installation



## Spring Gate Installation



## Metal Gate Installation



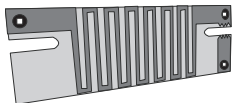
## 7 Lightning/ Surge Protection

Lightning is one of the main causes of fence controller failure. If a storm is forecast, disconnect your fence controller from the fence in advance, and unplug if it is an AC-powered unit. Using a Zareba Cut-Off Switch (part no. COS1) is a simple way to quickly disconnect your fence controller. If you are in an area with frequent electrical storms, be sure to keep a spare fence controller for backup.

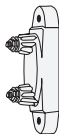
- ▲ **WARNING:** *Never disconnect a fence controller or approach an electric fence during a lightning storm.*
- ▲ **WARNING: Risk of electric shock!** *Do not connect an electric fence to any other device such as a cattle or poultry trainer, as lightning striking a fence will be conducted to other devices.*

Zareba offers several products designed to help minimize damage from lightning:

**Lightning Constrictor (part no. LC1)** – A combination lightning diverter and lightning choke that installs between the fence line and the fence controller.



**Lightning Arrestor/Lighting Diverter (part no. LA1/07106-96)** – Helps protect fence controller from lightning by diverting strike into the ground.



**Storm Guard (part no. 01667-92)** – Helps protect fence controllers rated at 1 joule of energy output or greater from lightning strikes.



**Spring Gate Kit (part no. SG1)** – Spring coil helps to dissipate lightning surges.



**AC Surge Suppressor (part no. 1549-96)** – Protects AC-powered fence controllers from power surges up to 6,000 volts.



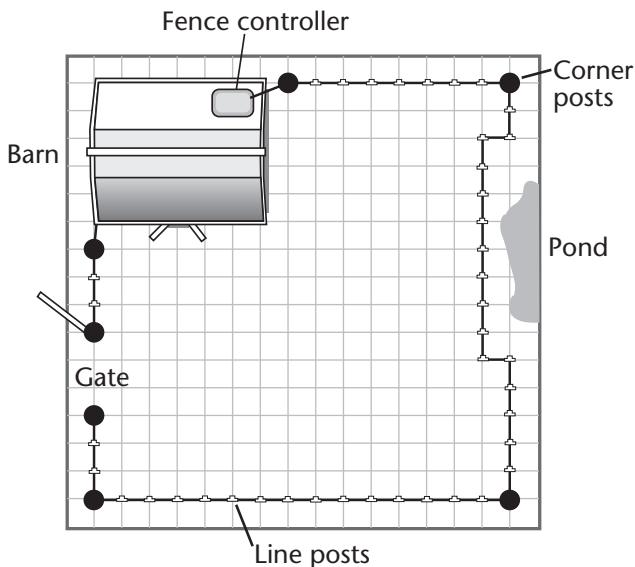
- ① **Tip:** While lightning protection devices can reduce damage by up to 75%, no device provides 100% protection from lightning.

# Electric Fence Design

## Design Your Fence

Now that you understand how each component works in your fence, sketch your fence layout to get a count of materials you'll need, including number of posts, wires, insulators, gate openings, etc.

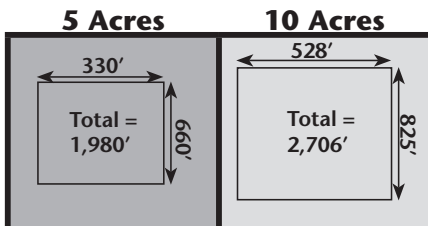
- ① **Tip:** An electric fence line does not have to be constructed in a continuous loop; it also works effectively when dead-ended.



## Estimate Your Electric Fence Supplies

Use the chart below to get a rough idea of what you'll need for different size enclosures.

- ① **Tip:** Visit [zarebasystems.com](http://zarebasystems.com) to use our online Fence Builder™. It will recommend the correct products in the correct amounts for your electric fence.



### For a SINGLE wire fence with ONE gate opening:

Posts (15ft spacing)	133	182
Line Post Insulators (25/bag)	6 bags	8 bags
Corner Post Insulators (10/bag)	1 bag	1 bag
Poly wire, tape or rope (1,320ft spool)	2 spools	3 spools
Gate handle kit	1 kit	1 kit

### For a THREE wire fence with ONE gate opening:

Posts (15ft spacing)	133	182
Line Post Insulators (25/bag)	16 bags	22 bags
Corner Post Insulators (10/bag)	2 bag	2 bag
Poly wire, tape or rope (1,320ft spool)	5 spools	7 spools
Gate handle kit	1 kit	1 kit

# Fence Configurations By Species

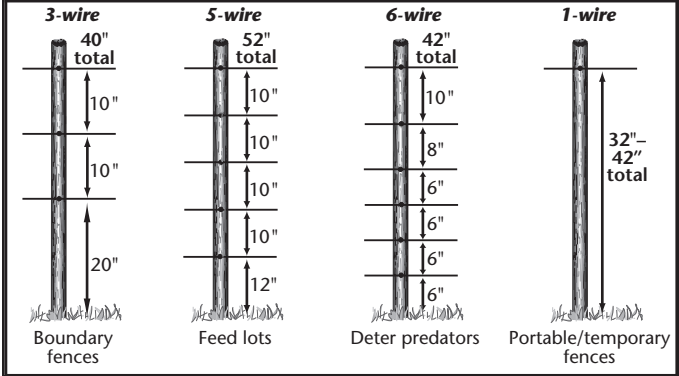
- ① **Tip:** Electric fence systems can be built in any configuration as needed by the end user. The following pages show recommended voltage levels and wire spacings to safely contain different species.



**Voltage for Cows: 2,000–3,000 v**

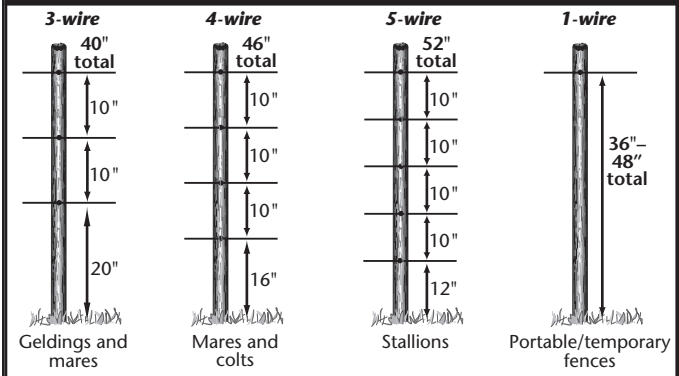
**Voltage for Bulls: 3,000–4,000 v**

- docile cattle require fewer strands; determined bulls require more voltage



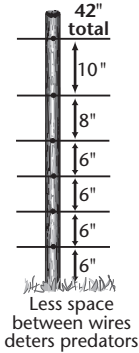
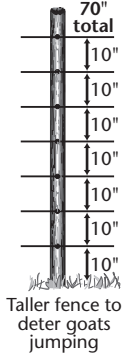
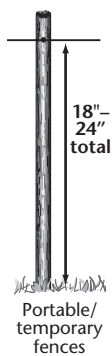
**Voltage: 2,000–3,000 v**

- high visibility for safety; use white 1½" poly tape

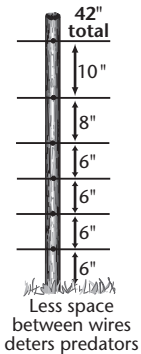
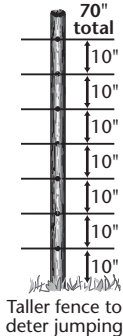


**Voltage: 4,000–5,000 v**

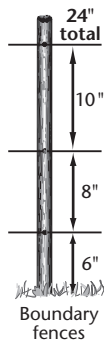
- thick coats/determined animals require more voltage;  
may need to deter predators

**6-wire****7-wire****1-wire****Voltage: 4,000–5,000 v**

- determined animals looking for food need higher voltage

**6-wire****7-wire****Voltage: 1,000–2,000 v**

- wires need to be low to ground to deter rooting

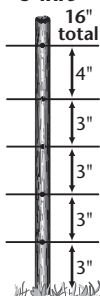
**3-wire**



**Voltage: 1,000–2,000 v**

- smaller animals require closer wire spacing and wire close to ground

**5-wire**

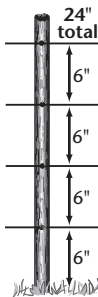


Height/number of wires depends on size of animal

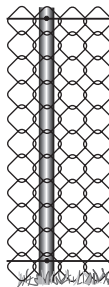


**Voltage: 700–1,000 v**

- use to contain/deter or prevent jumping or digging



Height/number of wires depends on size of animal



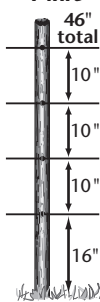
Retrofit existing fence with wire at top/bottom



**Voltage: 4,000–5,000 v**

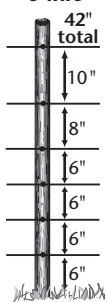
- easily trained, but thick coats require more voltage

**4-wire**



Boundary fence

**6-wire**



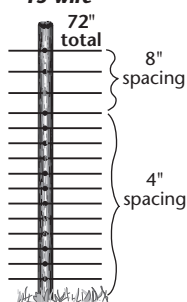
Deter predators



**Voltage: 4,000–5,000 v**

- higher voltage needed; fence needs to deter jumping/reaching under

**15-wire**



Boundary fences



# Testing/Troubleshooting

**1**

Test fence line voltage regularly at the furthest point on the fence from the fence controller to ensure voltage is adequate for the animal being controlled.

Adequate voltage reading – fence line OK

Inadequate voltage

Ensure power supply is sufficient (battery/AC power)

Replace/repair battery or AC power to fence controller

**2**

If power OK, disconnect FENCE and GROUND wires from fence controller, then check voltage output by touching metal part of terminals with tester.

If output is less than 5,000 volts\* there is a fence controller fault. Call Zareba for assistance.

If output is normal (over 5,000 volts\*), reconnect FENCE/GROUND wires

\* (2,000 volts for models 10ACRE, 20 ACRE, ACC2, 33C, RS3 or SP3)

**3**

Test ground system – it should read less than 400 volts on ground rod. If over 400 volts, add extra ground rods or make them deeper. Test again/add more ground rods until ground system reads under 400 volts. Remember grounding is affected by soil conditions.

**4**

If grounding is OK, test the hook-up wire that connects the fence controller to the fence line. Disconnect hook-up wire from fence line and test.

**Under 4,500 volts\***

Hook-up wire is leaking to ground. Ensure you are using 20 KV insulated hook-up wire. Replace and recheck.

**Over 4,500 volts\***

Turn off fence controller and reconnect the hook-up wire to fence line.

\* (1,500 volts for models 10ACRE, 20 ACRE, ACC2, 33C, RS3 or SP3)

**5**

**Check fence line**

Poor hook-up wire connections

Poor jumpers between lines

Poor fence line splices/conductors

Fence line short or leak to ground

Leaking hook-up wire under gateway

Very heavy vegetation against the fence line

Metal object touching fence line

Bad or incorrect insulator

Fence line touching a fence post

Faulty connections at gate openings

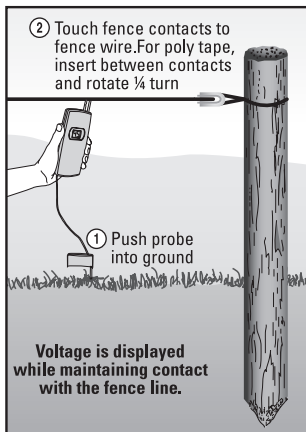
If you cannot resolve the problem please call Zareba Systems at 800-800-1819.

Regular testing and maintenance of your electric fence system is important to assure performance. We recommend Zareba voltage testers DEFT-1 or RSVT8 for this purpose.

- ① **Tip:** Testing voltage by touching the fence line with your hand or a weed is not recommended. In addition, if you do this wearing rubber-soled shoes you will NOT feel a shock.

### STEP 1: Test the Fence Line

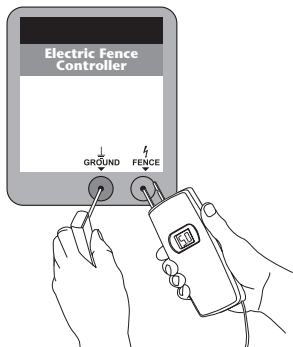
Check for adequate voltage at the furthest end of the fence line from the fence controller.



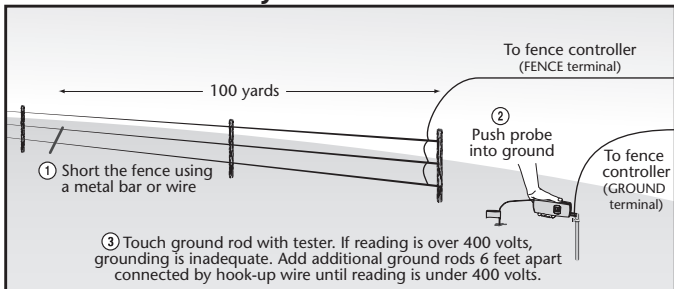
### STEP 2: Test Fence Controller

Remove fence controller power source (unplug or disconnect from battery) and disconnect fence and ground wires. Power fence controller and touch metal bolts of ground and fence terminals with ground and fence prongs of tester.

If output is less than 5,000 volts\*, there is a fence controller problem – please call Zareba Customer Service at 800-800-1819. (\*2,000 volts for models 10ACRE, 20ACRE, ACC2, 33C, RS3, SP3 or LIS3)

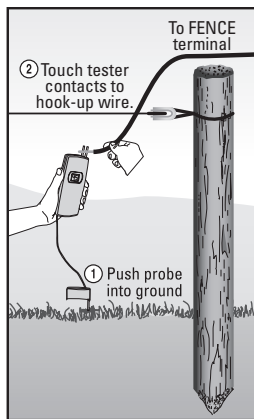


### STEP 3: Test Ground System



### STEP 4: Test Hook-Up Wire

Remove fence controller power source (unplug or disconnect from battery) and disconnect hook-up wire from fence line. Power fence controller and then check hook-up wire as shown.



### STEP 5: Check Fence Components

Walk your fence line and inspect all components. Insulators should be clean and not cracked. Fence wire should be properly spliced, not touching fence posts and properly connected at all points. Verify weeds, branches or other debris are not touching the fence line.

### STEP 6:

If you are still getting inadequate voltage readings visit [ZarebaSystems.com](http://ZarebaSystems.com) for further tips or call Zareba Systems customer service at 800-800-1819.

# Fence Controller Warranty

## **30-DAY FULL WARRANTY**

Zareba Systems® guarantees your satisfaction. You can return product with its receipt to the place of purchase within 30 days for a full refund. Proof of purchase is required for a full refund.

## **LIMITED WARRANTY**

This fence controller is warranted for one year from the date of sale to be free from defects of material and workmanship and from damage caused by lightning. Fencers that are equipped with the Storm Guard lightning protection module are warranted only when the Storm Guard is properly installed on the fence controller. Proof of purchase is required for warranty consideration, and may be returned to Zareba Systems® or any of the Zareba Authorized Repair Centers for warranty repair. If no sales receipt has been returned, the date of manufacture will be used to determine the warranty period.

Neither the full or limited warranty applies to any defect in the product caused by improper installation, misuse, tampering, neglect, moisture or any other reason not related to defects in material or workmanship of the product.

The full and limited warranties are not assignable or transferable. It is for the benefit of and given only to the first consumer purchaser of the product, and shall not be for the benefit of nor given to any subsequent owners or any other user or to any person.

The obligation of Zareba Systems® under the limited warranty is only to repairing or replacing, at its option, any part of the product that is defective and is covered by the terms of this warranty. If any covered defect occurs during the warranty, return the product for replacement or repair, with freight prepaid, to any Authorized Repair Center or directly to Zareba Systems®, 69 N. Locust Street, Lititz, PA 17543. There will be no further cost to you if it is a result of defects, failures or malfunction of the product.

(Note: The following fence controller models can only be returned to the factory for warranty consideration: 601, 8574, A5, WD56, 30, 10 ACRE, 20 ACRE, 415, 410, 4444, 4612, 4465, 4309, 8565, 8555, 8612, 77, 98, S12, S100, 980, 57, S12, TCC2, ACC2 and 33B. Any model of fence controller not listed can be sent to any Authorized Repair Center or to the factory). UPON EXPIRATION OF THE FULL 30-DAY WARRANTY, ZAREBA SYSTEMS® MAKES NO OTHER EXPRESSED OR IMPLIED WARRANTIES OF FITNESS OR MERCHANTABILITY OR ANY OTHER WARRANTIES, EITHER EXPRESSED OR IMPLIED; ANY IMPLIED WARRANTY OF MERCHANTABILITY OR FITNESS FOR A PARTICULAR PURPOSE, WHICH EXCEEDS THE FOREGOING WARRANTY, IS HEREBY DISCLAIMED BY ZAREBA SYSTEMS®. THERE ARE NO WARRANTIES WHICH EXTEND BEYOND THE DESCRIPTION OF THE FACE HEREOF. Some states do not allow limitations on how long an implied warranty lasts, so the above limitation may not apply to you.

In no case shall Zareba Systems® be liable for incidental, consequential, special or indirect damages of any kind. Any action for breach of warranty must be started within one year after the cause of action shall occur, and no such action shall be maintained which is not commenced within such a period.

Some states, however, do not allow the exclusion or limitation of incidental or consequential damages, so the above limitation or exclusion may not apply to you. This limited warranty gives you specific legal rights, and you may also have other rights which vary from state to state.

If you have any questions about how to exercise your rights under the terms of either the full or limited warranty, you may call Zareba at 800-800-1819, email to [info@zarebasystems.com](mailto:info@zarebasystems.com) or write to Zareba Systems®, 69 N. Locust Street, Lititz, PA 17543.

## **LIMITATION OF DAMAGES**

The directions for use of this product should be followed carefully. It is impossible to eliminate all risk inherently associated with use of the product. The effectiveness of Zareba Systems® brands of fence controllers may depend on the effectiveness of connections, interruption of power source, accidental grounding of wires, weather conditions, or the manner of use or application, all of which are beyond the control of Zareba Systems® or the seller. All such risks shall be assumed by the buyer.

Zareba Systems® warrants that this product is reasonably fit for the purposes referred to in the directions for use, subject to the inherent risks referred to above. Zareba Systems® makes no other expressed or implied warranty of fitness or merchantability or any other expressed or implied warranty. **IN NO CASE SHALL ZAREBA SYSTEMS® OR THE SELLER BE LIABLE FOR CONSEQUENTIAL, SPECIAL OR INDIRECT DAMAGES RESULTING FROM THE USE OR HANDLING OF THIS PRODUCT. ZAREBA SYSTEMS® AND THE SELLER OFFER THIS PRODUCT AND THE BUYER AND USER ACCEPT IT, SUBJECT TO THE FOREGOING CONDITIONS OF SALE AND WARRANTY WHICH MAY BE VARIED ONLY BY AGREEMENT IN WRITING SIGNED BY AN OFFICER OF ZAREBA SYSTEMS®.**

Some states, however, do not allow the exclusion or limitation of incidental or consequential damages, so the above limitation or exclusion may not apply to you. This limited warranty gives you specific legal rights, and you may also have other rights which vary from state to state.

# Notes

# Notes

# ZAREBA®

SMART SYSTEMS FOR ANIMAL CONTROL



## **Zareba Systems®**

Woodstream Corp.  
69 N. Locust Street  
Lititz, PA 17543

### **Contact us:**

ZarebaSystems.com  
info@zarebasystems.com  
800-800-1819



We are proud  
to support FFA



Part # 0077368-003 Rev1