

RYOBI
18V Reciprocating Saw
Model No. P518
Repair Sheet

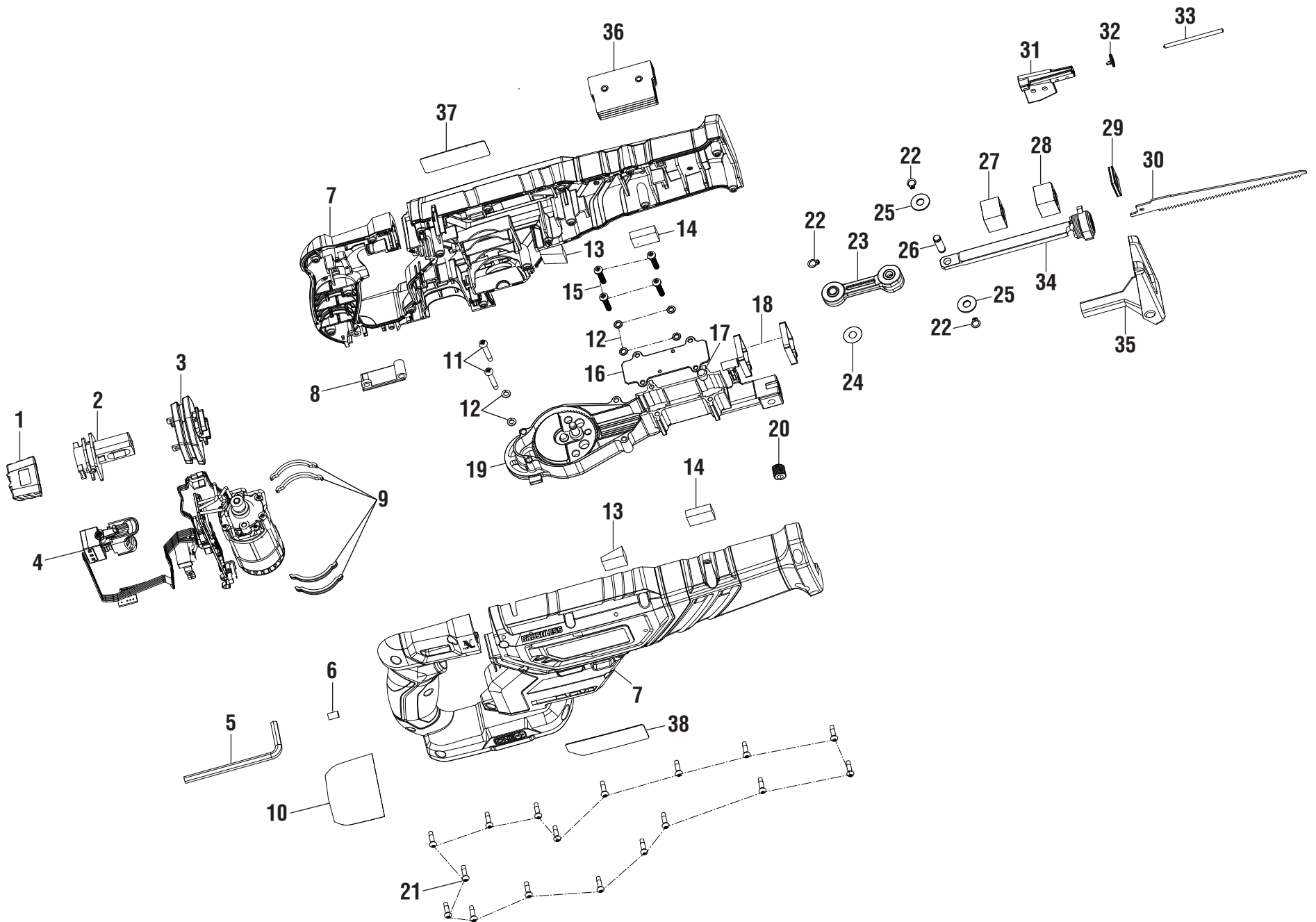
Techtronic Industries Power Equipment, Inc.

P.O. Box 1288, Anderson, SC 29622

Phone 1-800-525-2579

www.ryobitools.com

RYOBI 18V RECIPROCATING SAW – MODEL NUMBER P518



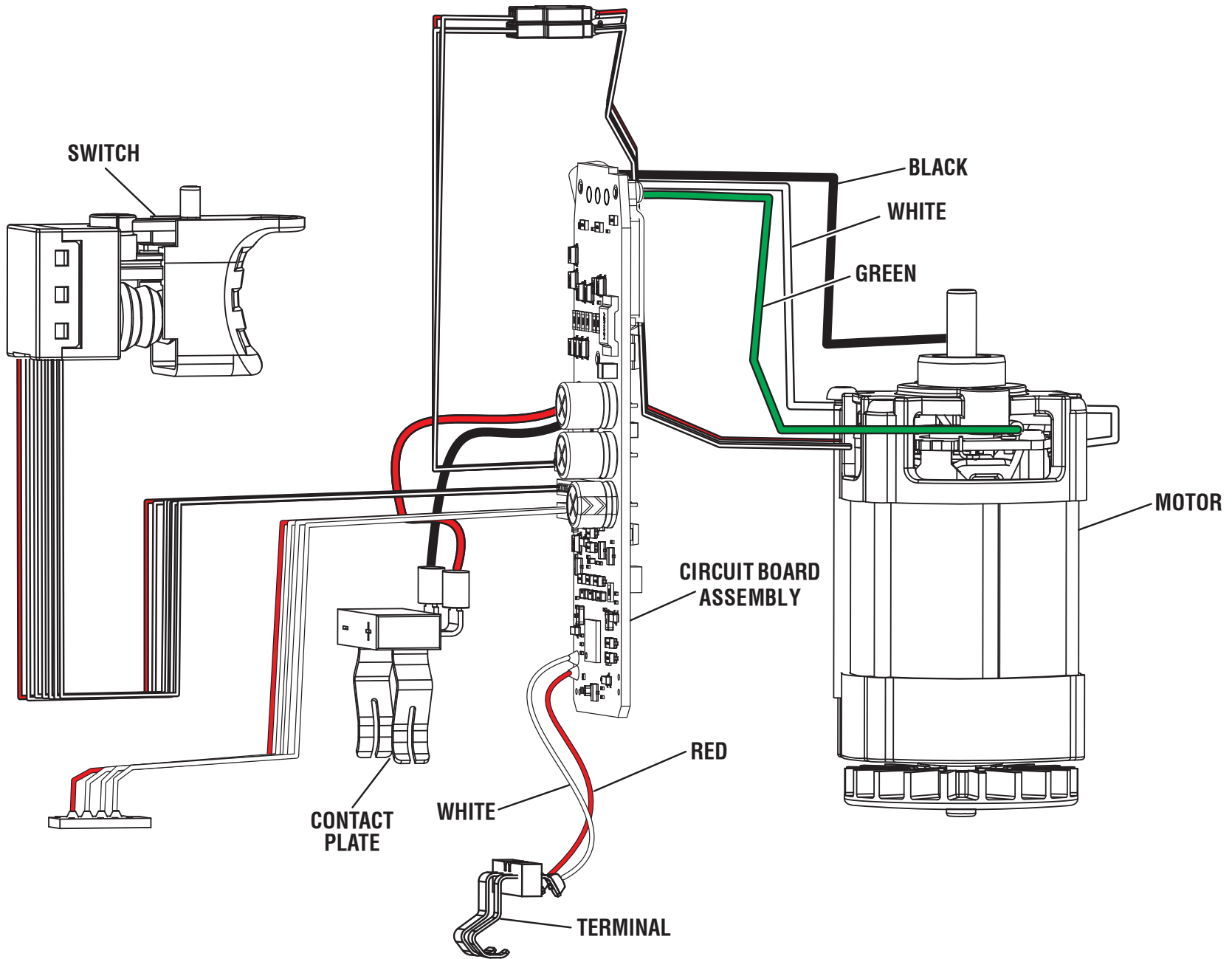
RYOBI 18V RECIPROCATING SAW – MODEL NUMBER P518

The model number will be found on a label attached to the motor housing. Always mention the model number in all correspondence regarding your **RECIPROCATING SAW** or when ordering repair parts.

PARTS LIST

KEY NO.	PART NUMBER	DESCRIPTION	QTY	KEY NO.	PART NUMBER	DESCRIPTION	QTY
1	360173001	Safety Button.....	1	22	670704001	Retaining Ring	3
2	533733001	Connecting Rod.....	1	23	204126004	Connecting Rod Assembly.....	1
3	564498001	Rubber Sleeve	1	24	635499001	Washer (OD12.5 x ID6.2 x 0.2 mm)	1
4	N/A	Motor, Switch, Circuit Board and Contact Plate Holder Assembly	1	25	690915019	Washer (OD16 x ID6.3 x 1.2 mm)	2
5	6800201	Hex Key Wrench (M5, 28 mm x 80 mm).....	1	26	681081002	Pin.....	1
6	560219003	Rubber Stopper	1	27	672355003	Sliding Bushing.....	1
7	204784004	Housing Assembly (Inc. Key Nos. 10 & 37-38).....	1	28	672353003	Front Sliding Bushing	1
8	536278001	Door.....	1	29	901512001	Foam Rubber.....	1
9	564870001	Rubber Cushion.....	4	30	690291037	Blade (Wood Cutting)	1
10	941120412	Foot Label.....	1	31	313917001	Release Lever Assembly	1
11	660024011	Screw (M4 x 28 mm, T20 Torx Pan Hd.).....	2	32	690475001	Torsion Spring.....	1
12	670030004	Spring Washer	6	33	690476001	Lock Pin.....	1
13	560723001	Rubber Pad	2	34	300309047	Sliding Rod w/Blade Clamp Assembly.....	1
14	560703001	Rubber Wedge.....	2		300309048	Sliding Rod w/Blade Clamp Assembly.....	1
15	660165011	Screw (M4 x 12 mm, T20 Torx Pan Hd.).....	4	35	300216067	Shoe Assembly.....	1
16	633372001	Rod Cover	1	36	314893001	Plate.....	1
17	560704001	Rubber Cushion.....	1	37	940304497	Logo Label.....	1
18	561319001	Foam Rubber.....	2	38	941122103	Data Label	1
19	N/A	Gear Case Assembly	1	Not Shown:			
20	660170001	Screw (M10 x 10 mm, Hex. Hd.).....	1	995000563	Operator's Manual (961152974)		
21	662565001	Screw (M3.5 x 14 mm, T10 Torx Pan Hd.).....	17	3-15-19			
				(Rev:01)			

RYOBI 18V RECIPROCATING SAW – MODEL NUMBER P518



WIRING DIAGRAM