



# SERVICE PARTS LIST

**BULLETIN NO.**  
**54-10-2720**

<b>SPECIFY CATALOG NO. AND SERIAL NO. WHEN ORDERING PARTS</b>		REVISED BULLETIN	DATE
<b>M18™ FUEL™ 1/2" Super-Hawg®</b>			July 2015
<b>CATALOG NO.</b>	<b>2709-20</b>	<b>STARTING SERIAL NO.</b>	<b>G60A</b>
			<b>WIRING INSTRUCTION</b> <b>SEE PAGE 4</b>

**EXAMPLE:**  
00 <sup>70</sup>/<sub>0</sub> Component Parts (Small #) Are Included  
When Ordering The Assembly (Large #).

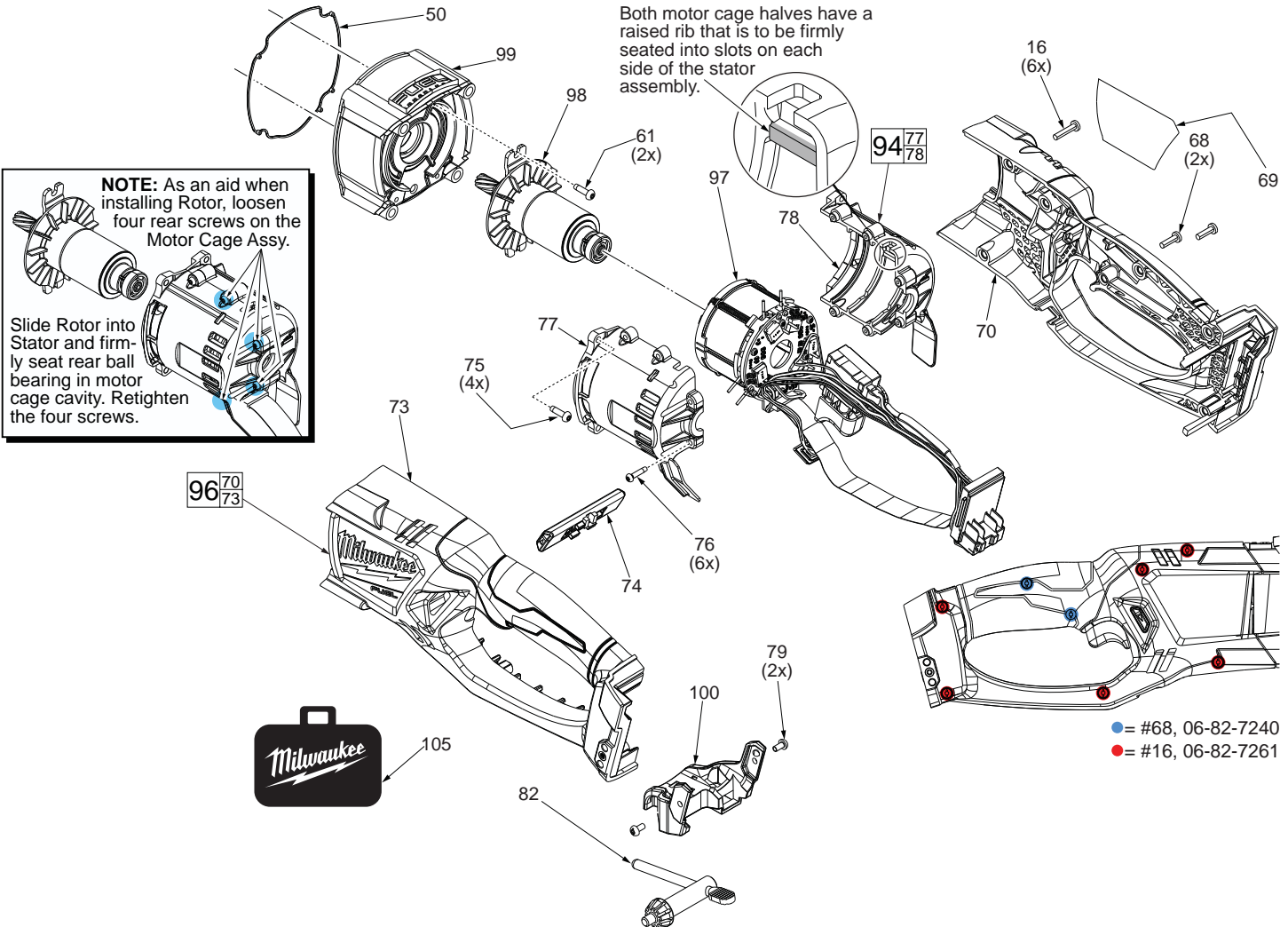


FIG.	PART NO.	DESCRIPTION OF PART	NO. REQ.
16	06-82-7261	6-19 x .687 Pan Hd. Slit. Plast. T-15 Screw	(6)
50	43-44-0705	Gasket	(1)
61	06-82-5314	10-24 x 1/2" Pan Hd. Tapt. T-25 Screw	(2)
68	06-82-7240	6-19 x .5 Pan Hd. Slit. Plast. T-15 Screw	(2)
69	12-20-0077	Service Nameplate	(1)
70	-----	Right Handle Halve (Cover)	(1)
72	45-30-1000	Rubber Slug	(2)
73	-----	Left Handle Halve (Support)	(1)
74	42-42-0017	Forward/Reverse Shuttle	(1)
75	06-82-5285	6-32 x .5 Pan Hd. Tapt. T-15 Screw	(4)
76	06-82-1080	M3 x 14mm T-10 ST Screw	(6)
77	-----	Motor Cage Cover - Left	(1)
78	-----	Motor Cage Support - Right	(1)
79	06-82-0130	6-32 x 5/16" Pan Hd. T-15 Machine Screw	(2)
82	48-66-3280	Chuck Key	(1)
94	23-16-0205	Motor Cage Assembly	(1)
96	31-44-1095	Handle Assembly	(1)
97	14-20-2709	Electronics Assembly Contains: Stator, PCBA, On-Off Switch, LED, Battery Connector Block	(1)
98	16-01-2709	Rotor Assembly	(1)
99	14-13-0055	Diaphragm Assembly with Needle Bearings	(1)
100	43-72-0077	Key Holder Assembly	(1)
105	42-55-3565	FUEL™ Contractor Bag - Large	(1)

**IMPORTANT!**  
To prevent damage to the High Voltage Wire Assembly, a component in the Electronics Assembly #97, see service note on page 4 prior to removing the Motor Cage Cover #77.

SCREW TORQUE CHART			
Item	Part Number	Seat Torque (Kg./cm.) (In./lbs.)	
1	06-75-3155	140-160	122-139
4	06-82-5411	35-50	30-43
15	05-88-9915	60-65	52-56
16	06-82-7261	For Shift Hub	8-12 7-10
16	06-82-7261	For Handle	12-17 10-14
24	05-88-0510	30-45	26-39
30	06-82-5360	75-86	65-74
61	06-82-5314	46-58	40-50
68	06-82-7240	12-17	10-14
75	06-82-5285	12-17	10-14
76	06-82-1080	7-13	6-11
79	06-82-0130	10-15	8-13

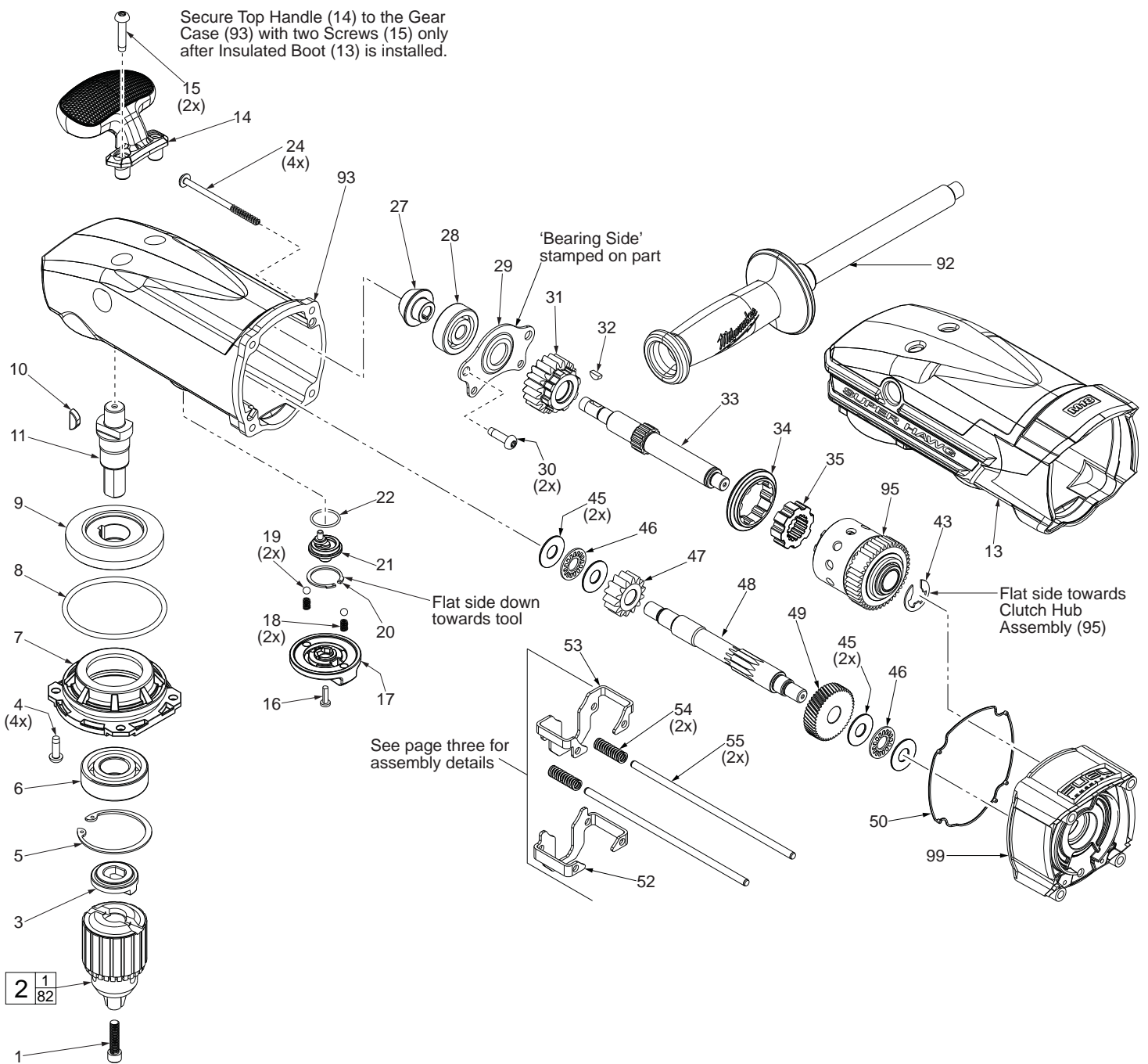
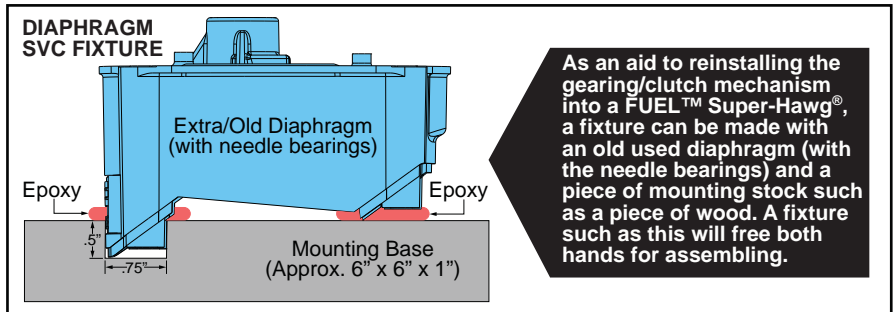
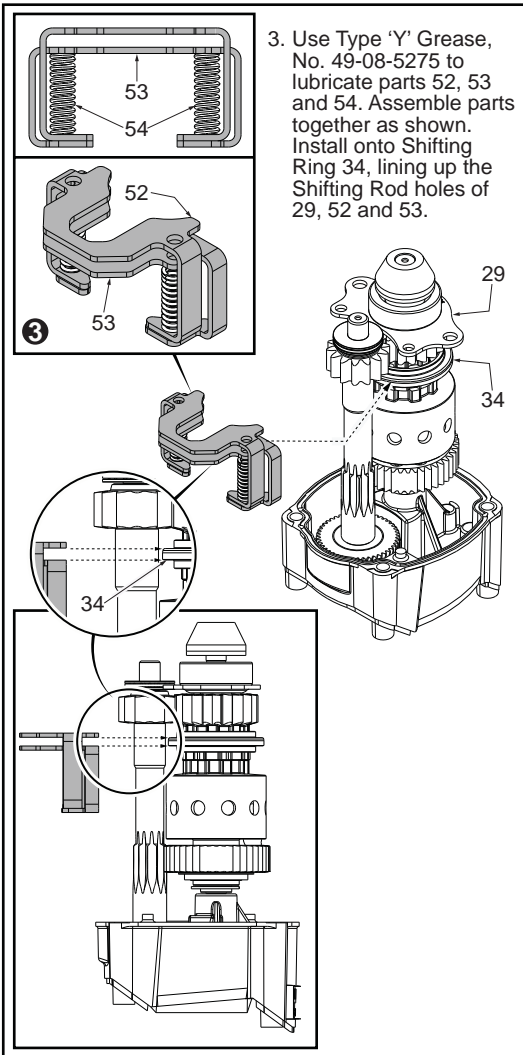
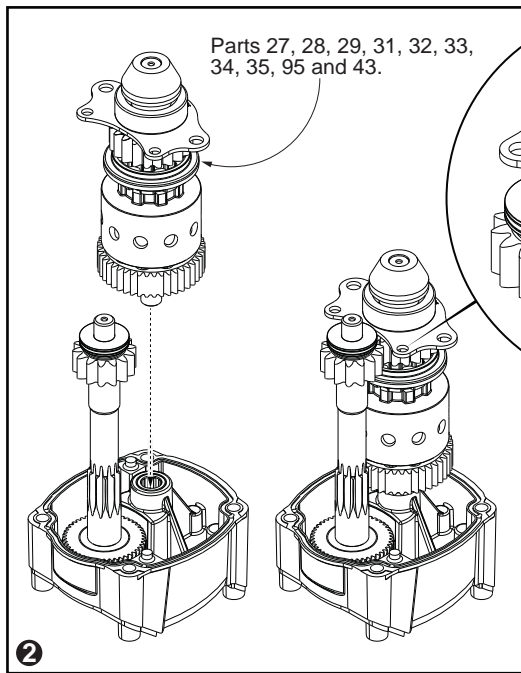
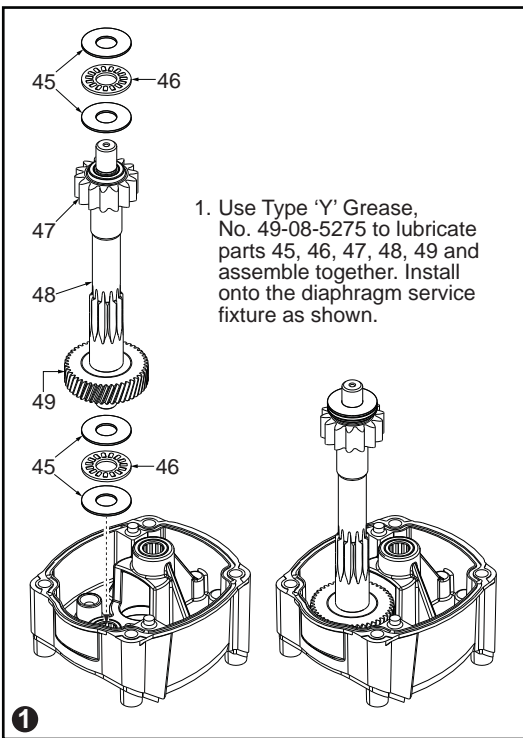
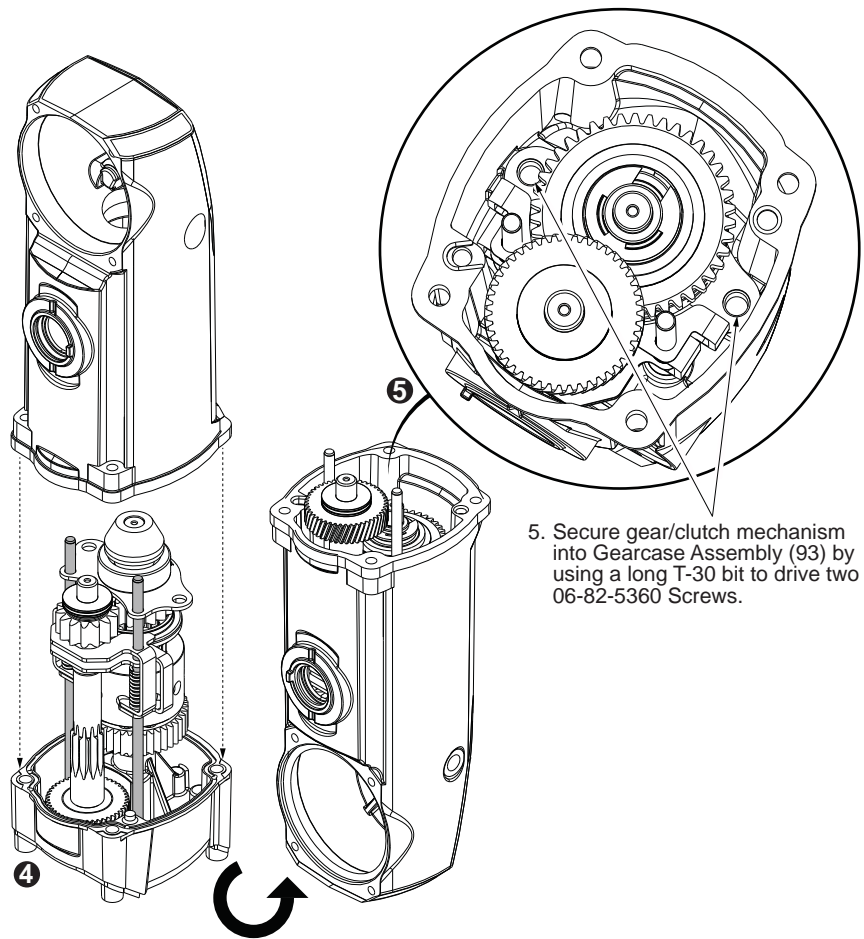


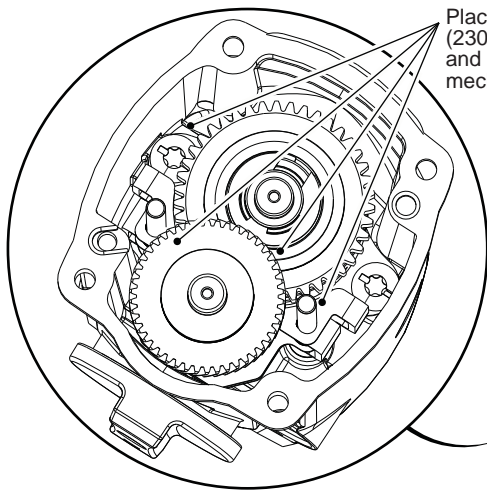
FIG.	PART NO.	DESCRIPTION OF PART	NO. REQ.
1	06-75-3155	1/4-20 x 1" Socket Head Screw-LH Thread	(1)
2	48-66-1481	1/2" Keyed Chuck with Chuck Key & Screw	(1)
3	28-53-0115	Chuck Hub	(1)
4	06-82-5411	10-24 x .625 Pan Hd. Taptite T-25 Screw	(4)
5	34-80-2980	Retaining Ring	(1)
6	02-04-2031	Ball Bearing	(1)
7	28-53-0095	Spindle Mounting Hub	(1)
8	34-40-0005	O-Ring	(1)
9	32-05-0400	Bevel Gear	(1)
10	06-42-2400	Woodruff Key	(1)
11	38-50-0027	Spindle	(1)
13	45-12-0044	Insulated Boot	(1)
14	31-44-2709	Top Handle	(1)
15	05-88-9915	M5 x 1.23 x 25mm Pan Hd. DG T-25 Screw	(2)
16	06-82-7261	6-19 x .687 Pan Hd. Slit. Plast. T-15 Screw	(1)
17	43-98-0067	Shifting Knob	(1)
18	40-50-8690	Detent Spring	(2)
19	02-02-1300	Steel Ball	(2)
20	44-86-0032	Retaining Ring	(1)
21	28-53-0085	Shifting Hub	(1)
22	34-40-1570	O-Ring	(1)
24	05-88-0510	M5 x 80mm Pan Hd. T-20 PT Screw	(4)
27	32-60-0280	Bevel Pinion	(1)
28	02-04-1055	Ball Bearing	(1)

FIG.	PART NO.	DESCRIPTION OF PART	NO. REQ.
29	44-66-1005	Bearing Retaining Plate	(1)
30	06-82-5360	1/4-20 x .625 Pan Hd. Taptite T-30 Screw	(2)
31	32-44-0500	2nd Intermediate Gear Assembly - High	(1)
32	06-42-0800	Woodruff Key	(1)
33	36-66-0300	2nd Intermediate Shaft	(1)
34	42-90-0015	Shifting Ring	(1)
35	43-12-0065	Drive Hub	(1)
43	34-60-1450	E-Ring	(1)
45	45-88-0395	Thrust Washer	(4)
46	02-80-0180	Thrust Bearing	(2)
47	32-60-0405	2nd Intermediate Pinion - High	(1)
48	32-60-0400	2nd Intermediate Shaft	(1)
49	32-42-0200	1st Intermediate Gear	(1)
50	43-44-0705	Gasket	(1)
52	42-76-0281	Short Shift	(1)
53	42-76-0271	Long Shift	(1)
54	40-50-0067	Shifter Spring	(2)
55	44-94-0012	Shifting Rod	(2)
92	14-34-0030	Side Handle Assembly	(1)
93	14-30-0505	Gearcase Assembly with Needle Bearings	(1)
95	14-08-2709	Clutch Hub Assembly	(1)
99	14-13-0055	Diaphragm Assembly with Needle Bearings	(1)



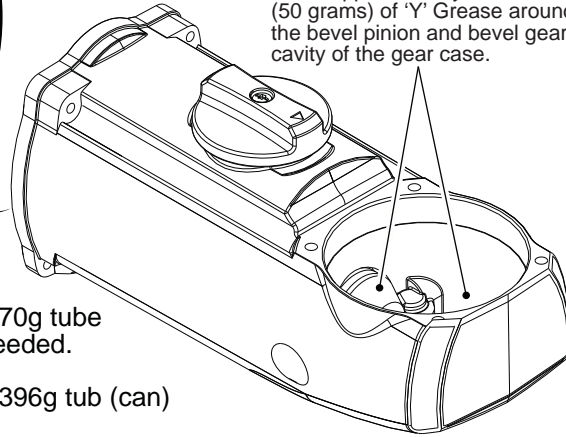
4. Carefully feed both Shifting Rods through the holes in the Bearing Retaining Plate and the Long and Short Shift Plates down into the corresponding holes in the service fixture. Carefully place the Gearcase Assembly over the gearing and onto the service fixture. Turn the assembly over and remove the diaphragm service fixture.



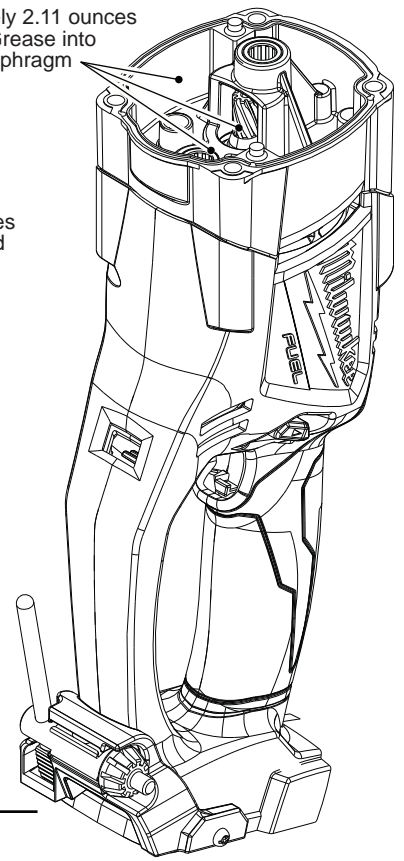


Place approximately 8.11 ounces (230 grams) of 'Y' Grease down and around the gear and clutch mechanism inside the gear case.

Place approximately 2.11 ounces (60 grams) of 'Y' Grease into this area of the diaphragm assembly.



Place approximately 1.76 ounces (50 grams) of 'Y' Grease around the bevel pinion and bevel gear cavity of the gear case.



### LUBRICATION NOTES:

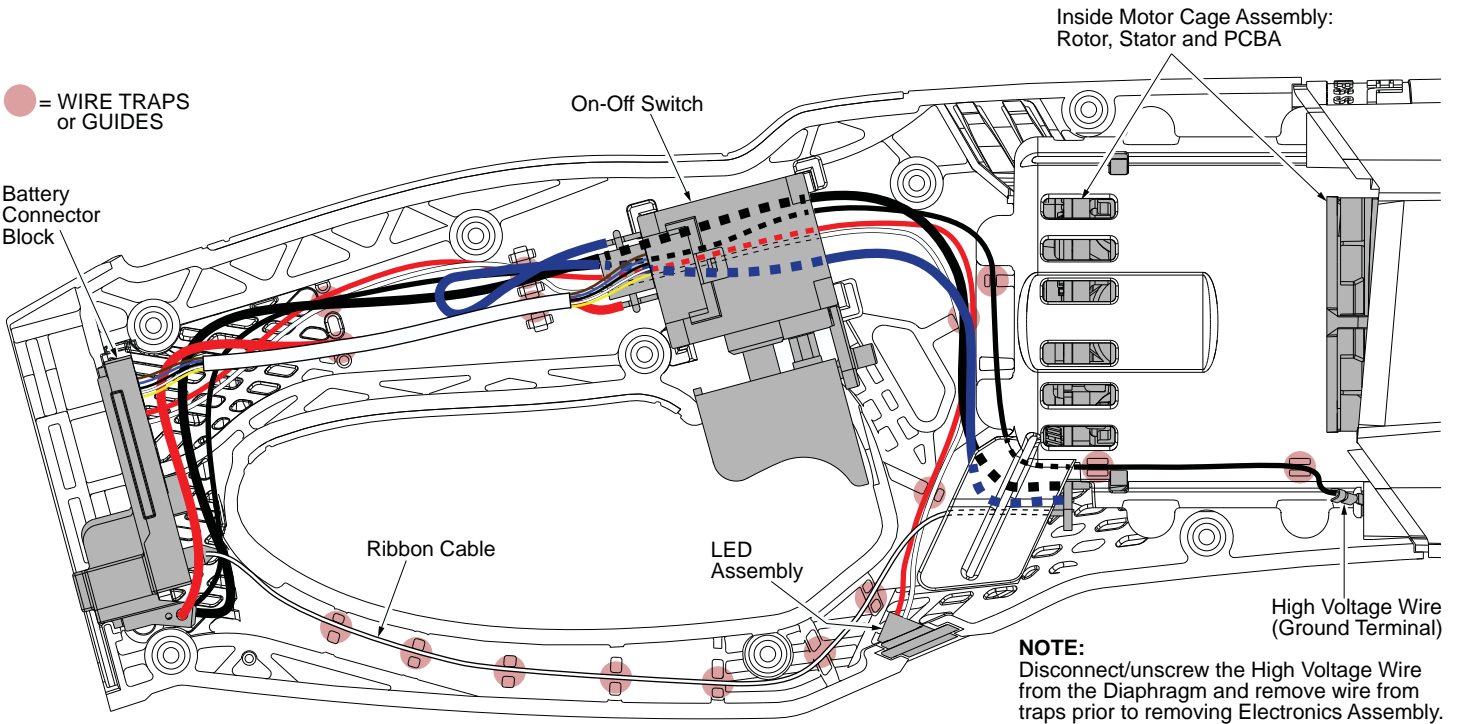
Type 'Y' Grease No. 49-08-5270, 6oz./170g tube  
The entire amount of two tubes will be needed.

or  
Type 'Y' Grease No. 49-08-5275, 14oz./396g tub (can)

When servicing, remove 90-95% of the existing grease prior to installing Type 'Y'.  
Original grease may be similar in color but not compatible with 'Y'.

**DO NOT** wash Clutch Hub Assembly #95. Prior to reinstalling, clean gear assemblies with a clean, dry cloth.

### WIRING DIAGRAM



**AS AN AID TO REASSEMBLY, TAKE NOTICE OF WIRE ROUTING AND POSITION IN WIRE GUIDES AND TRAPS WHILE DISMANTLING TOOL.**

**BE SURE THAT ALL COMPONENTS OF THE ELECTRONICS KIT ARE SEATED FIRMLY AND SQUARELY IN THE HANDLE RECESSES.**

**AVOID PINCHED WIRES, BE SURE THAT ALL WIRES AND SLEEVES ARE PRESSED COMPLETELY DOWN IN WIRE GUIDES AND TRAPS.**

**PRIOR TO INSTALLING THE HANDLE COVER ONTO THE HANDLE SUPPORT, BE SURE THAT THERE ARE NO INTERFERENCES.**