

Part Identification (Dimensions are approximate and are shown to assist in the identification of parts for assembly. Actual dimensions may be smaller or larger.)

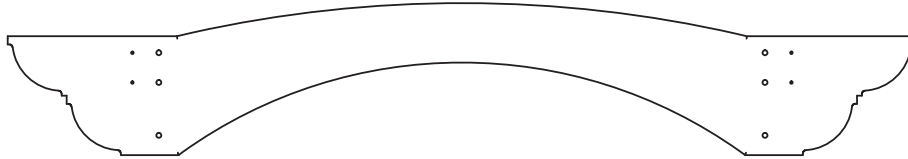
4pc. (208) - Arbor Ends 25.4 x 114.3 x 254mm



2pc. (204) - Arbor Side 25.4 x 114.3 x 582.1mm



2pc. (200) - Arbor Arch Beam 25.4 x 292.1 x 1746.3mm



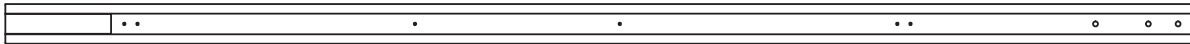
5pc. (203) - Arbor Trellis 25.4 x 76.2 x 1041.4mm



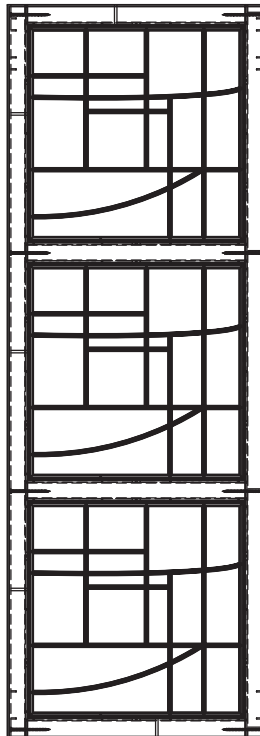
4pc. (209) - Cross Brace 38.1 x 76.2 x 496.3mm



4pc. (206) - Engineered Panel Post 50.8 x 76.2 x 2286mm

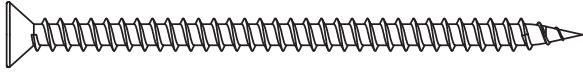


2pc. (316) - 3 High Faux Glass Panel 38.1 x 495.3 x 1409.7mm

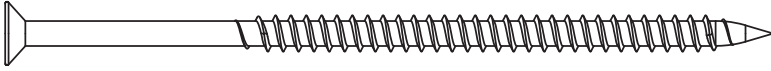


Hardware Identification (Dimensions are approximate and are shown to assist in the identification of parts for assembly. Actual dimensions may be smaller or larger.)

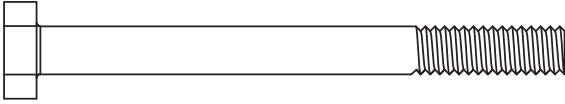
32pc. - Wood Screw #8 x 3" - (Y06416-530)



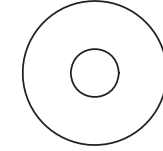
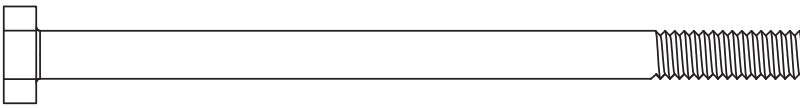
10pc. - Wood Screw #10 x 4" - (Y06416-940)



12pc. - Hex Bolt 1/4 x 2-3/4" - (Y07416-223)



4pc. - Hex Bolt 1/4 x 4" - (Y07416-249)

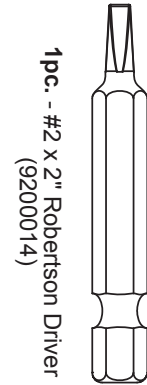


16pc. - 1/4" Flat Washer
(Y05416-201)



16pc. - 1/4" Lock Washer
(Y05416-204)

16pc. - Tee Nut 1/4" - (Y08416-206)



1pc. - #2 x 2" Robertson Driver
(9200014)