



Roll-Over Protection System Kit

TimeCutter® HD Zero-Turn-Radius Riding Mower

Model No. 136-7495

Installation Instructions

▲ WARNING

CALIFORNIA Proposition 65 Warning

This product contains a chemical or chemicals known to the State of California to cause cancer, birth defects, or reproductive harm.

Safety

Rollover Protection System (ROPS) Safety

- Do not remove the roll bar from the machine.
- Ensure that the seat belt is attached and that you can release it quickly in an emergency.
- Always wear your seat belt when the roll bar is up.
- Check carefully for overhead obstructions and do not contact them.
- Keep the roll bar in safe operating condition by thoroughly inspecting it periodically for damage and keeping all the mounting fasteners tight.
- Replace a damaged roll bar. Do not repair or alter it.

Installation

Loose Parts

Use the chart below to verify that all parts have been shipped.

Procedure	Description	Qty.	Use
1	No parts required	–	Prepare the machine.
2	Left lower roll bar Right lower roll bar Bolt (1/2 x 4 inches) Washer Locknut (1/2 inch) Left support bracket Right support bracket Bolt (1/2 x 1-1/4 inches) Bolt (1/2 x 1-3/4 inches)	1 1 4 6 6 1 1 2 2	Install the lower tubes and seat belt.



Procedure	Description	Qty.	Use
3	Left seat-belt bracket (machines without MyRide only)	1	Install the seat belt.
	Right seat-belt bracket (machines without MyRide only)	1	
	Seat-belt assembly	1	
	Seat-belt buckle	1	
	Bolt (1/2 x 1-1/4 inches)	4	
	Locknut (1/2 inch)	4	
	Self-tapping screw (1/4 x 5/8 inch)	2	
4	Roll bar	1	Install the roll bar.
	Side plate	4	
	Bolt (1/2 x 3 inches)	8	
	Flat spacer	4	
	Washer	6	
	Locknut (1/2 inch)	8	
	Bumper	3	
	Cylindrical spacer	4	
	Lanyard with pivot pin, washer, and hairpin cotter	1	

Determine the left and right sides of the machine from the normal operating position.

1

Preparing the Machine

No Parts Required

Procedure

1. Park the machine on a level surface.
2. Disengage the blade-control switch.
3. Move the motion-control levers outward to the NEUTRAL-LOCK position.
4. Engage the parking brake.
5. Shut off the engine and remove the key.

2

Installing the Lower Tubes and Seat Belt

Parts needed for this procedure:

1	Left lower roll bar
1	Right lower roll bar
4	Bolt (1/2 x 4 inches)
6	Washer
6	Locknut (1/2 inch)
1	Left support bracket
1	Right support bracket
2	Bolt (1/2 x 1-1/4 inches)
2	Bolt (1/2 x 1-3/4 inches)

Procedure

Note: The engine and left and right pods are not shown in the figures.

1. Raise and support the machine so that the rear wheels are off the ground.
2. Remove the rear wheels.

- Loosely install the left and right lower roll bar tubes using 2 bolts (1/2 x 4 inches), 2 washers, and 2 locknuts (1/2 inch) for each tube (Figure 1).

Note: Ensure that the battery cables route between the right pod and the right roll bar.

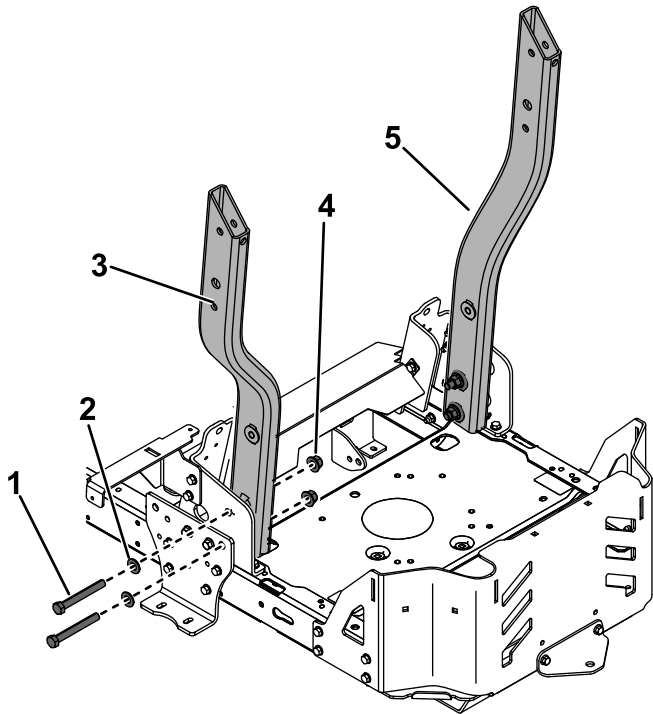


Figure 1

- | | |
|------------------------------|-------------------------------------|
| 1. Bolt—1/2 x 4 inches (2) | 4. Locknut (1/2 inch) |
| 2. Washer (2) | 5. Right lower roll bar (installed) |
| 3. Left lower roll bar tubes | |

- Loosely install the left and right support brackets using 1 bolt (1/2 x 1-1/4 inches), 1 locknut (1/2 inch), 1 bolt (1/2 x 1-3/4 inches), and 1 washer for each bracket (Figure 2).

Note: Ensure that the battery ground cable routes under the right support bracket and other cables route above the right support bracket (Figure 3).

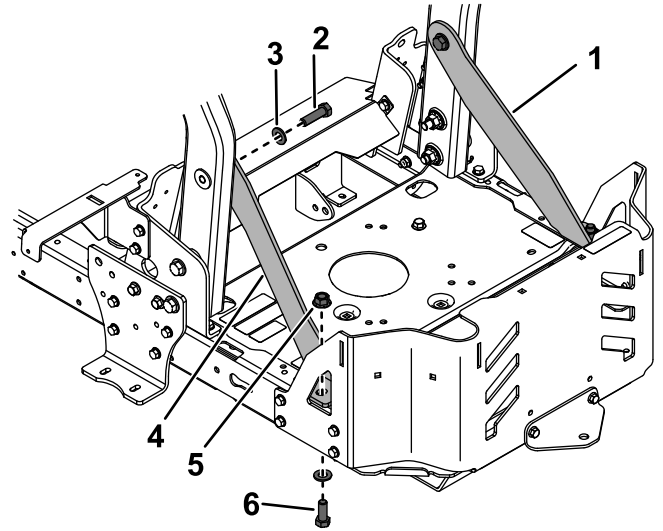


Figure 2

- | | |
|--------------------------------------|------------------------------|
| 1. Right support bracket (installed) | 4. Left support bracket |
| 2. Bolt (1/2 x 1-3/4 inches) | 5. Locknut (1/2 inch) |
| 3. Washer (2) | 6. Bolt (1/2 x 1-1/4 inches) |

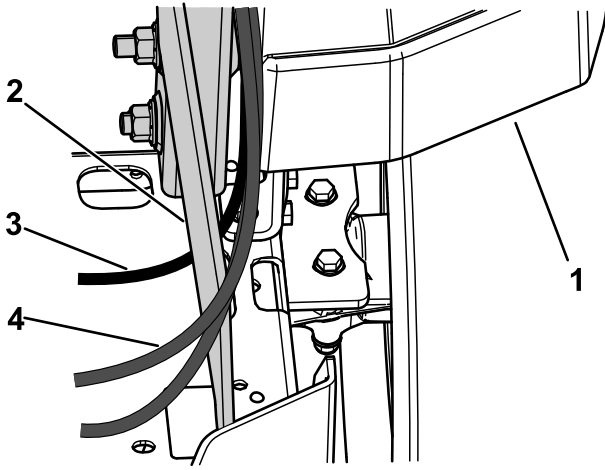


Figure 3

g239269

- 1. Right pod
- 2. Right support bracket
- 3. Battery ground cable
- 4. Cable

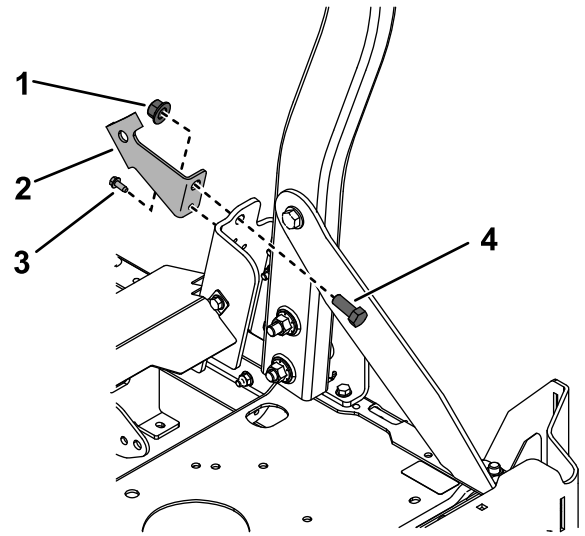


Figure 4

g222620

- 1. Locknut (1/2 inch)
- 2. Right seat-belt bracket
- 3. Self-tapping screw (1/4 x 5/8 inch)
- 4. Bolt (1/2 x 1-1/4 inches)

3

Installing the Seat Belt

Parts needed for this procedure:

1	Left seat-belt bracket (machines without MyRide only)
1	Right seat-belt bracket (machines without MyRide only)
1	Seat-belt assembly
1	Seat-belt buckle
4	Bolt (1/2 x 1-1/4 inches)
4	Locknut (1/2 inch)
2	Self-tapping screw (1/4 x 5/8 inch)

2. Install the seat-belt assembly and buckle to the brackets using 2 bolts (1/2 x 1-1/4 inches) and 2 locknuts (1/2 inch) as shown in [Figure 5](#). Torque the bolts to 41 N·m (30 ft-lb).

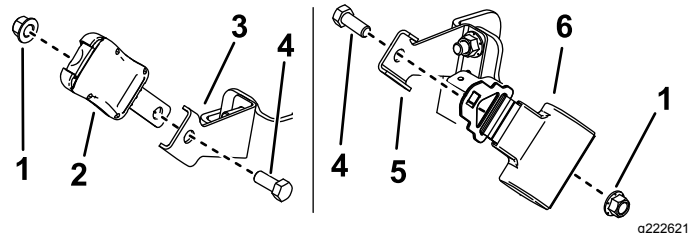


Figure 5

g222621

- 1. Locknut (1/2 inch)
- 2. Seat-belt buckle
- 3. Right seat-belt bracket
- 4. Bolt (1/2 x 1-1/4 inches)
- 5. Left seat-belt bracket
- 6. Seat-belt assembly

Machines without MyRide

1. Install the left and right seat-belt brackets using 1 bolt (1/2 x 1-1/4 inches), 1 locknut (1/2 inch), and 1 self-tapping screw (1/4 x 5/8 inch) for each bracket ([Figure 4](#)). Torque the bolts to 41 N·m (30 ft-lb).

Machines with MyRide

Install the seat-belt assembly and buckle to the seat using 2 bolts (1/2 x 1-1/4 inches) as shown in [Figure 6](#).

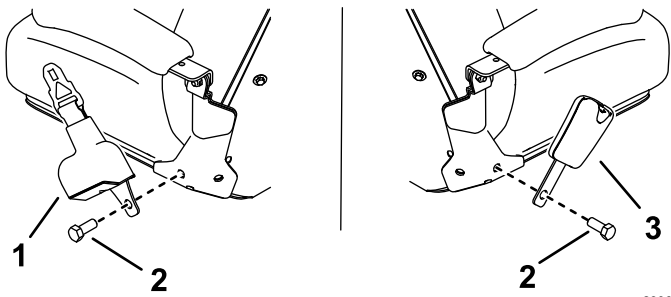


Figure 6

g230682

1. Seat-belt assembly
2. Bolt (1/2 x 1-1/4 inches)
3. Seat-belt buckle

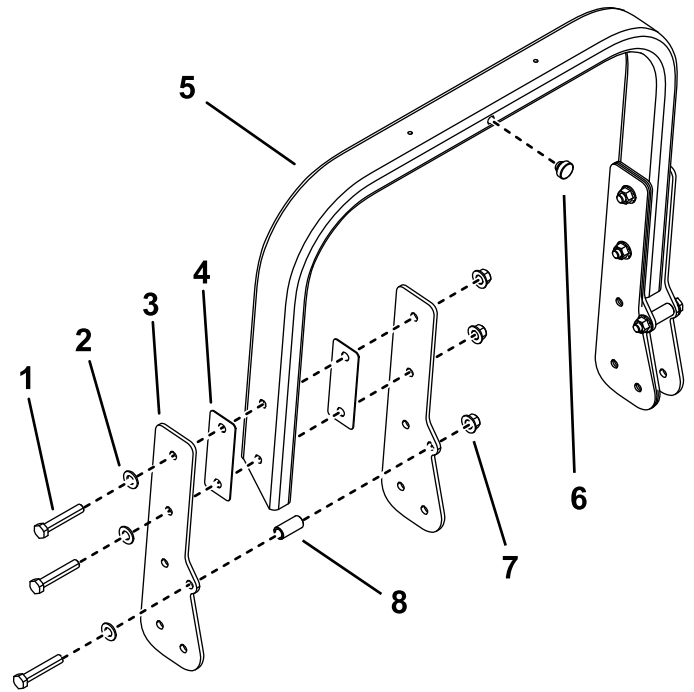


Figure 7

g222814

1. Bolt—1/2 x 3 inches (3)
2. Washer (3)
3. Side plate (2)
4. Flat spacer (2)
5. Roll bar
6. Bumper
7. Locknut—1/2 inch (3)
8. Cylindrical spacer

2. Install a bumper in the center of the roll bar (Figure 7).
3. Install a bumper and cylindrical spacer to both lower roll bar tubes (Figure 8).

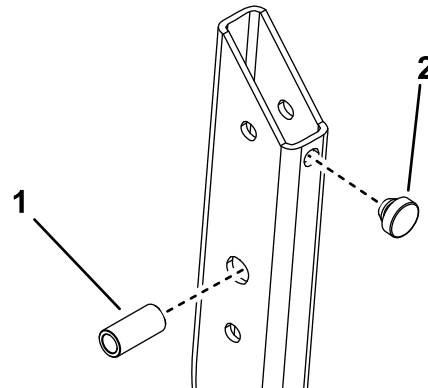


Figure 8

g222812

1. Cylindrical spacer
2. Bumper

4. With the assistance of a second person, attach the roll bar assembly and the lanyard washer to the lower roll bar tubes using a bolt (1/2 x 3 inches) and locknut (1/2 inch) on each tube (Figure 9).

4

Installing the Roll Bar

Parts needed for this procedure:

1	Roll bar
4	Side plate
8	Bolt (1/2 x 3 inches)
4	Flat spacer
6	Washer
8	Locknut (1/2 inch)
3	Bumper
4	Cylindrical spacer
1	Lanyard with pivot pin, washer, and hairpin cotter

Procedure

Note: Leave the bolts loose enough so that the parts are free to shift around.

1. Install 2 side plates to both sides of the roll bar using 3 bolts (1/2 x 3 inches), 2 flat spacers, 3 washers, 1 cylindrical spacer, and 3 locknuts (1/2 inch) on each side (Figure 7).

Operation

Using the Rollover-Protection System

⚠ WARNING

To avoid injury or death from rollover: keep the roll bar in the fully raised, locked position and use the seat belt.

Ensure that the seat is secured to the machine.

⚠ WARNING

There is no rollover protection when the roll bar is in the down position.

- Lower the roll bar only when absolutely necessary.
- Do not wear the seat belt when the roll bar is in the down position.
- Drive slowly and carefully.
- Raise the roll bar as soon as clearance permits.
- Check carefully for overhead clearances (i.e., branches, doorways, electrical wires) before driving under any objects, and do not contact them.

Important: Ensure that the seat is secured to the machine.

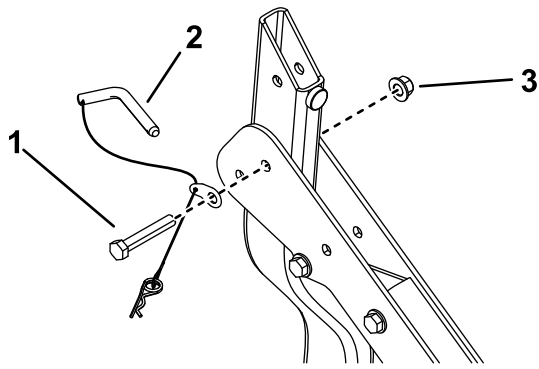


Figure 9

g222813

1. Bolt (1/2 x 3 inches)
2. Pivot pin
3. Locknut (1/2 inch)

5. Raise the roll bar into the upright position and lock it into place using the pivot pin and hairpin cotter on both sides of the roll bar (Figure 10).

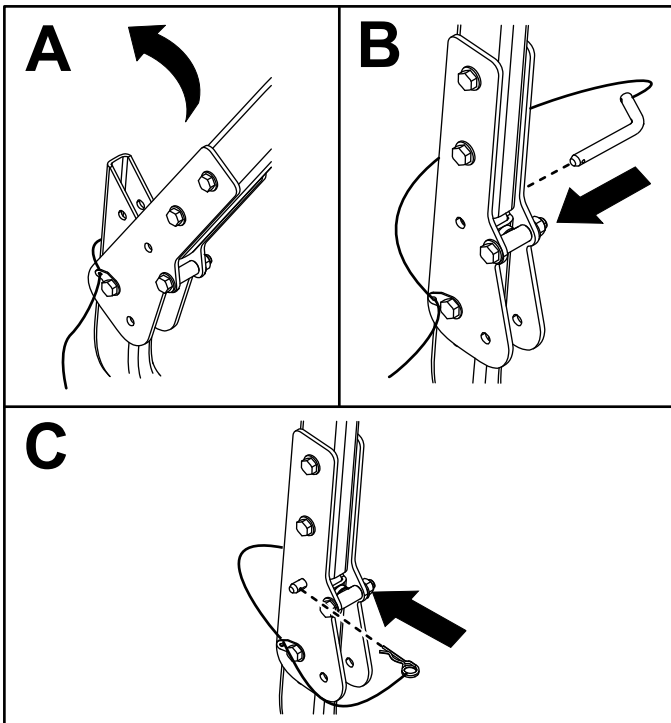


Figure 10

g222859

6. Torque all 1/2-inch bolts to 95 N·m (70 ft-lb).
7. Install the rear tires. Torque the lug nuts to 95 to 122 N·m (70 to 90 ft-lb).
8. Lower the machine to the ground.

Raising the Roll Bar

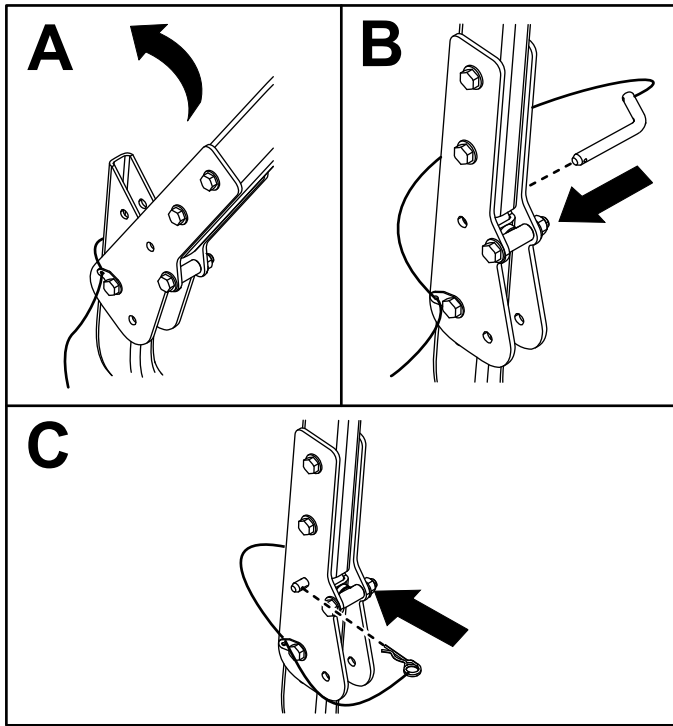


Figure 11

g222859

Lowering the Roll Bar

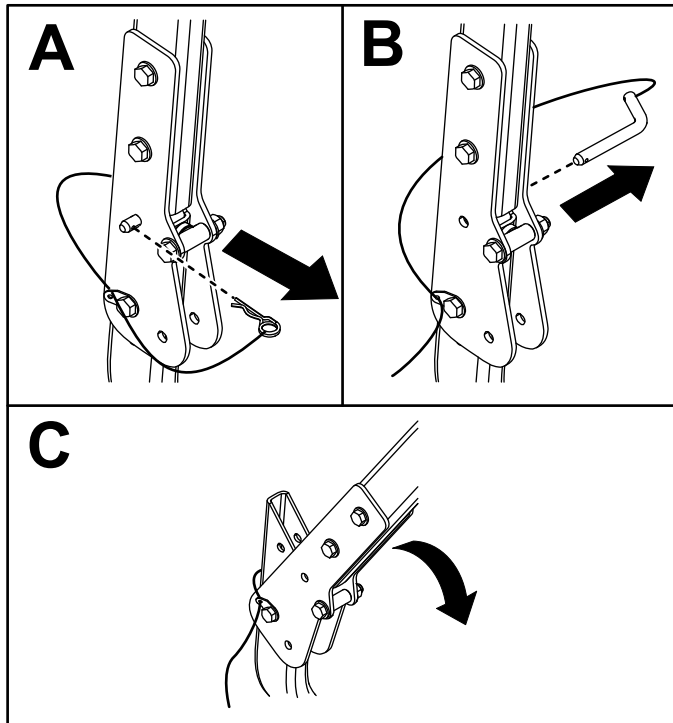


Figure 12

g222897



Count on it.