



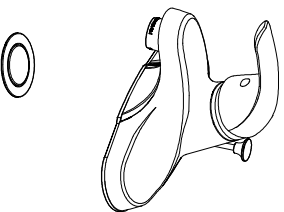
Design House is a registered brand of DHI Corp.

Mequon, WI 53092

1-800-558-8700

# MIDDLETON SINGLE HANDLE LAVATORY FAUCET

## Models 584011, 584029



Your new Design House faucet will give you years of trouble free performance. Thank you for choosing our product for your home. **Please read all of these instructions carefully before installing your new faucet.**

### Helpful tools to install this faucet:

- basin wrench
- silicon sealer
- Teflon tape
- flashlight
- (2) crescent wrenches
- faucet supply tubes

### IMPORTANT POINTS

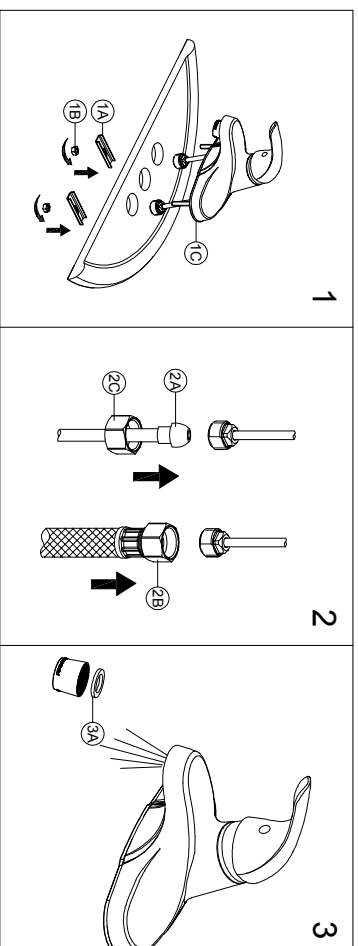
- When installing your new faucet, hand tighten the connector nuts, then use one wrench to anchor the fitting and a second wrench to tighten the nut one additional turn. Connections that are too tight will reduce the integrity of the system.
- Wrap threaded connections (except aerator thread in spout or where O-ring or rubber sealant are present) with Teflon tape available from your local hardware or plumbing supply store. Always wrap in a clockwise direction.

### SAFETY TIPS

- **ALWAYS** protect your eyes with safety glasses.

## INSTALLATION PROCEDURE

1. Shut off water supplies. Remove the old faucet. Place the faucet assembly through the mounting holes in sink. Secure the faucet assembly to sink using the washers (1A) and nuts (1B) provided.  
Note: If the sink is uneven, use silicone under the putty guard (1C).
2. Making the waterline connections: Use 1/2 in. I.P.S. faucet connections (2B, not included), or use the supplied coupling nuts (2C) with a 3/8 in. O.D. ball-hose fuser (2A, not included). Before tightening the faucet connector to the water supply, apply a second wrench to the supply tube fitting. This will prevent the supply tube from moving or twisting when tightening the faucet connector. Do not over-tighten.
3. **IMPORTANT:** After installation is complete, remove the aerator to flush the water lines. Do not lose the gasket (3A) in the aerator. Turn on the water supply and allow both hot and cold water to run for at least one minute each. This flushes away any debris that could cause damage to internal parts. While the water is running, check for leaks. Turn off the water and replace the aerator.



## MAINTENANCE

Your new Design House faucet is designed to give you years of trouble free performance. Avoid abrasive cleaners, steel wool and harsh chemicals that will dull the finish and void your warranty. Brass finishes are polished, then protected with a PVD or a lacquer coating to help prevent tarnishing. Clean these surfaces only with a damp, soft cloth.

Keep it looking like new by cleaning it periodically with a mild solution of soapy water. Rinse thoroughly and then dry with a soft cloth.

### CONSUMER PROTECTION WARNING

Under the Safe Drinking Water Act, the U.S. Environmental Protection Agency restricts the amount of lead used in brass and solder. Your new faucet is made in strict compliance with all government standards. The materials used in the manufacture of this faucet are of industry standard quality and are similar to other plumbing products having brass fittings.

To reduce the amount of lead in your drinking water, allow the water to run for a moment before filling your glass and remember to always use cold water for drinking purposes.

## TROUBLE SHOOTING

- o 584011 - Satin Nickel
- o 584029 - Oil Rubbed Bronze

**Problem:** Faucet leaks from under handle.

**Cause:** Adjusting ring or cap assembly has loosened.

**Action:**

1. Move the handle to OFF position. Remove the index, unscrew the screw and remove the handle.
2. Tighten the adjusting ring by turning it clockwise with a small screwdriver. Move the ball stem to the on position and continually tighten the adjusting ring until the leak stops draining out from around the ball stem.
3. If the leak does not stop, loosen the adjusting ring and tighten the entire cap assembly by turning it clockwise. Re-tighten the adjusting ring as before.
4. Reinstall the handle.

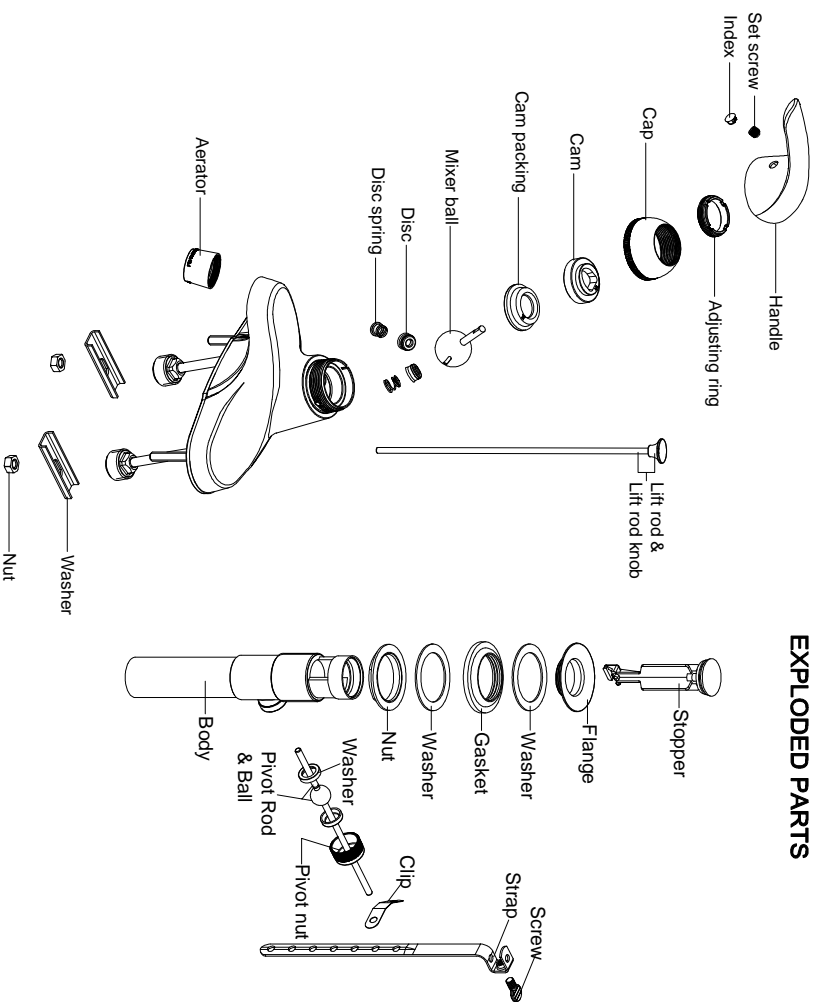
**Problem:** Faucet leaks around aerator or an improper flow pattern.

**Cause:** Aerator is incorrectly fitted or is dirty.

**Action:**

1. Unscrew the aerator. Make sure all internal parts are laying flat.
2. If there is debris, gently flush all parts inside.
3. Reinstall the aerator.

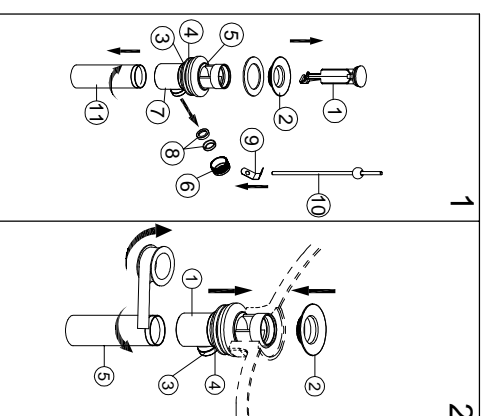
**Many of these parts come preassembled. This exploded diagram is to assist in trouble shooting.**



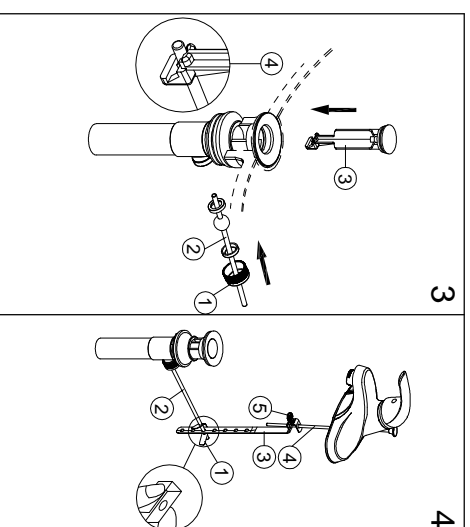
## POP-UP INSTALLATION PROCEDURE

1. Remove the stopper (1) and the flange (2). Screw the brass nut (3) all the way down. Push the plastic washer (4) and the gasket (5) down. Unscrew the pivot nut (6) from the pop-up body (7) and remove the seal washers (8). Take off the spring clip (9) from the horizontal rod (10). Remove the tailpiece (11) from the pop-up body (7).

2. Apply the silicone to the underside of the flange (2). Insert the pop-up body (1) into the drain hole from below sink. Screw the flange (2) into the pop-up body (1). With the pivot hole (3) facing toward faucet, use groove joint pliers to tighten the nut (4), do not over tighten. Do not turn the pop-up while tightening the nut, or sealant may not seal drain. Clean excess putty. Apply thread sealant tape to the top threads of the tailpiece (5) in a clockwise direction, as shown.



## POP-UP INSTALLATION EXPLODED PARTS



3. Install the horizontal rod (2) and the stopper (3) as shown (4). Hand tighten the pivot nut (1).

4. Place one end of the spring clip (1) onto the end of the horizontal rod (2). Insert the horizontal rod (2) through a hole on the strap (3). Connect the other end of the spring clip (1) to the horizontal rod (2). Insert the lift rod (4) into the strap and tighten the screw (5).