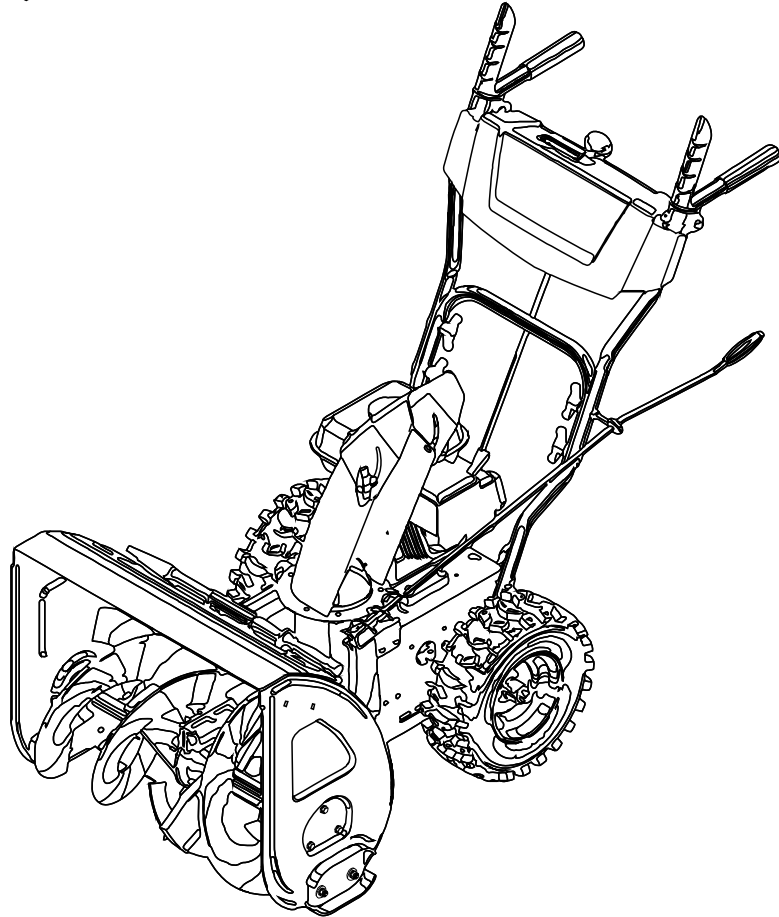




# Parts Manual



## Dual Stage Snowthrower

### Snowthrowers

Mfg. No.	Description
1696610-01	1024LD, B&S 9.5 Gross TP 24" Dual Stage Snowthrower (2017)

Manual Part No. 1760672

Revision -

Rev. Date: 7/1/2016

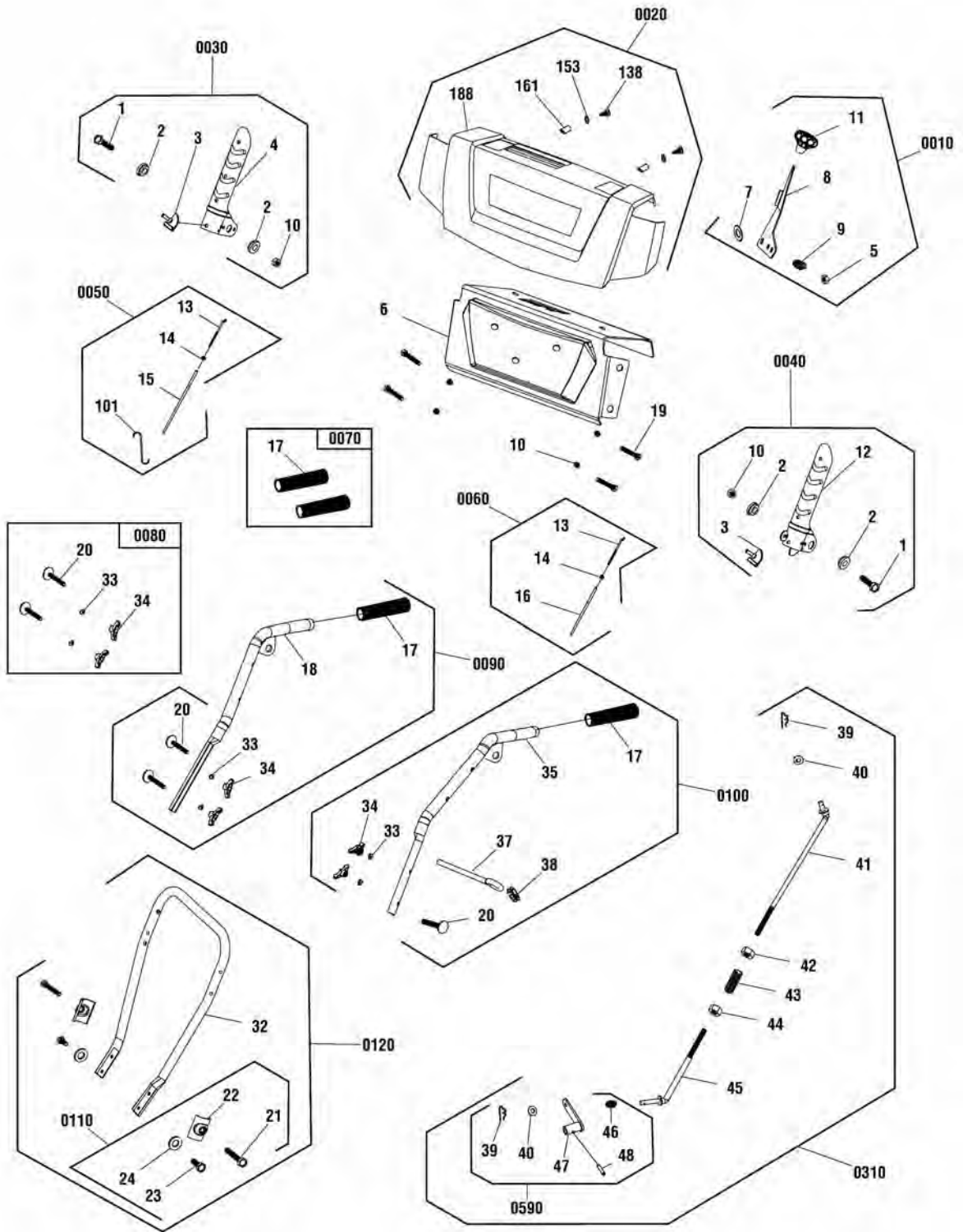
Not for  
Reproduction

<b>PRODUCT COMPONENTS</b>	<b>PAGES</b>
Handles & Controls Group .....	4
Engine & Frame Group .....	8
Auger Housing Group .....	10
Auger Drive Group .....	12
Traction Drive Group .....	16
Wheels & Tires Group .....	20
Decals Group .....	22
Discharge Chute Group .....	24
<b>Torque Specification Chart .....</b>	<b>Inside Back Cover</b>

Not for  
Reproduction

## Handles & Controls Group

NOTE: Unless noted otherwise,  
use the standard hardware torque  
specification chart.



The above parts group applies to the following Mfg. Nos.:  
1696610-01 - 1024LD

## Handles & Controls Group

REF NO	PART NO.	QTY.	DESCRIPTION
0010	707794	1	KIT, LEVER, SPEED (Incl. Ref. Nos. 5, 7, 8, 9 & 11)
5	-----	1	*NUT, Lock, Hex Head, non-metal (Included with Ref. No. 0010)
7	-----	2	*WASHER, Flat (Included with Ref. No. 0010)
8	-----	1	*LEVER, Speed Control (Included with Ref. No. 0010)
9	-----	1	*SPRING, Speed Control (Included with Ref. No. 0010)
11	-----	1	*KNOB, Speed Control Lever (Included with Ref. No. 0010)
0020	707796	1	KIT, DASH, BRIGGS (Incl. Ref. Nos. 161, 138, 188 & 153)
161	-----	2	*BUCKLE, Lamp (Included with Ref. No. 0020)
138	-----	2	*BOLT, Phill head (Included with Ref. No. 0020)
188	-----	1	*PANEL, Dash (Included with Ref. No. 0020)
153	-----	4	*WASHER, Flat (Included with Ref. No. 0020)
0030	707800	1	KIT, RIGHT HAND LEVER, TRACTION DRIVE (Incl. Ref. Nos. 1, 2, 3, 4 & 10)
1	-----	2	*SCREW, Hex head (Included with Ref. No. 0030)
2	-----	4	*PAD, small tensioning plate (Included with Ref. No. 0030)
3	-----	2	*CAP, Rubber (Included with Ref. No. 0030)
4	-----	1	*LEVER, Traction drive engagement (Included with Ref. No. 0030)
10	-----	39	*NUT, Lock, Hex Head, non-metal (Included with Ref. No. 0030)
0040	707802	1	KIT, LEFT HAND LEVER, AUGER DRIVE (Incl. Ref. Nos. 1, 2, 3, 10 & 12)
1	-----	2	*SCREW, Hex head (Included with Ref. No. 0040)
2	-----	4	*PAD, small tensioning plate (Included with Ref. No. 0040)
3	-----	2	*CAP, Rubber (Included with Ref. No. 0040)
10	-----	39	*NUT, Lock, Hex Head, non-metal (Included with Ref. No. 0040)
12	-----	1	*LEVER, Auger engagement (Included with Ref. No. 0040)
0050	707766	1	KIT, CABLE, TRACTION DRIVE (Incl. Ref. Nos. 13, 14 & 15)
13	-----	2	*ROD, Steel (Included with Ref. No. 0050)
14	-----	2	*NUT, Copper (Included with Ref. No. 0050)
15	-----	1	*ROD, Steel (Included with Ref. No. 0050)
101	-----	1	*SPRING, Line Pressing, Chute
0060	707803	1	KIT, CABLE, AUGER CLUTCH (Incl. Ref. Nos. 13, 14 & 16)
13	-----	2	*ROD, Steel (Included with Ref. No. 0060)
14	-----	2	*NUT, Copper (Included with Ref. No. 0060)
16	-----	1	*ROD, Steel (Included with Ref. No. 0060)
0070	770080	1	KIT, GRIP
17	-----	2	*GRIP (Included with Ref. No. 0070)
0080	707835	1	KIT, UPPER HANDLE HARDWARE (Incl. Ref. Nos. 20, 33 & 34)
20	-----	2	*BOLT, Blade (Included with Ref. No. 0080)
33	-----	2	*WASHER, Blade (Included with Ref. No. 0080)
34	-----	2	*KNOB (Included with Ref. No. 0080)
0090	770115	1	KIT, UPPER HANDLE, RIGHT (Incl. Ref. Nos. 17, 18, 20, 33 & 34)
20	-----	3	*BOLT, Blade (Included with Ref. No. 0090)
33	-----	4	*WASHER, Blade (Included with Ref. No. 0090)
34	-----	6	*KNOB (Included with Ref. No. 0090)
17	-----	2	*GRIP (Included with Ref. No. 0090)

### Footnotes

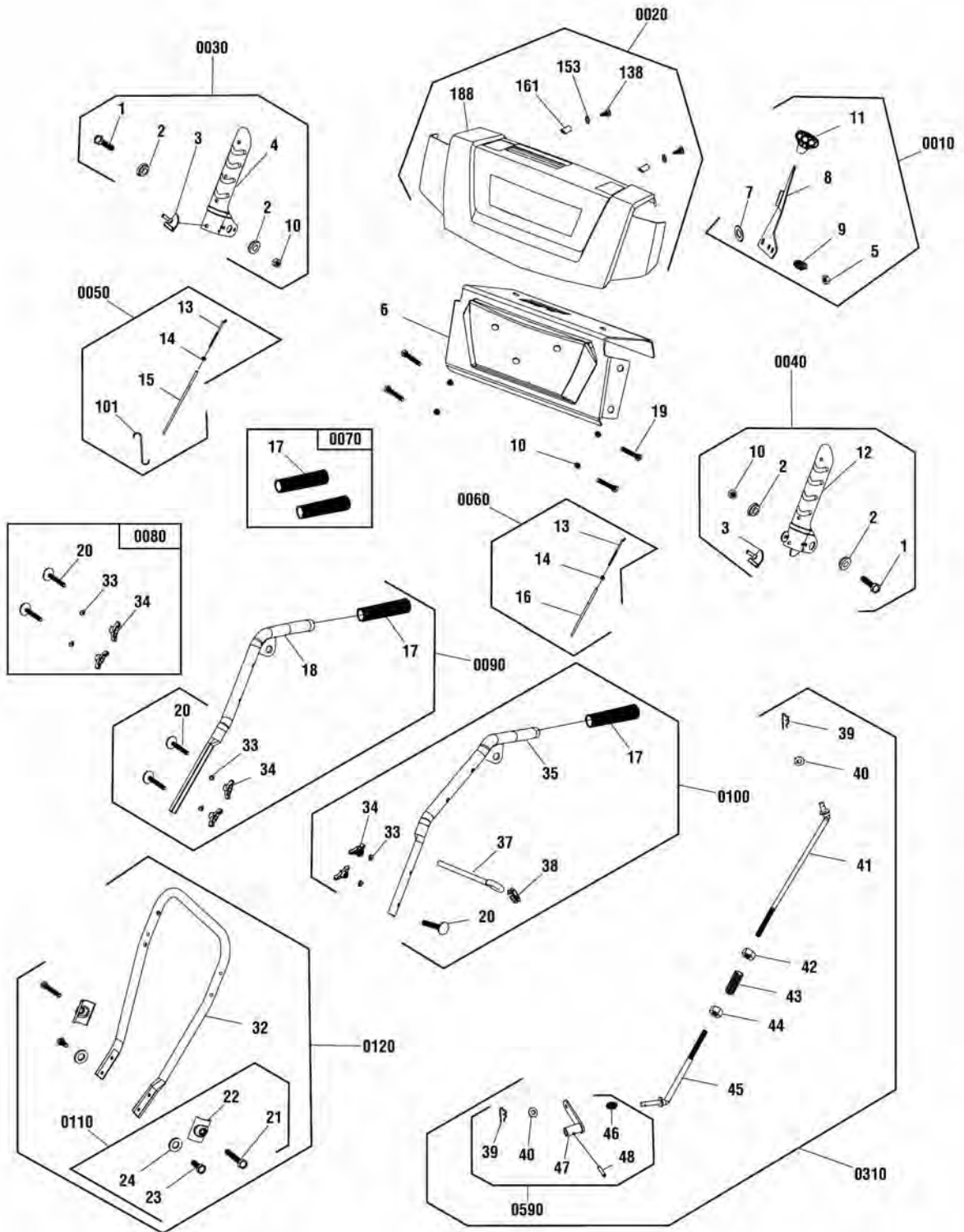
Note:\* Not a serviceable part.

The above parts group applies to the following Mfg. Nos.:

1696610-01 - 1024LD

## Handles & Controls Group

NOTE: Unless noted otherwise,  
use the standard hardware torque  
specification chart.



The above parts group applies to the following Mfg. Nos.:  
1696610-01 - 1024LD

## Handles & Controls Group

REF NO	PART NO.	QTY.	DESCRIPTION
18	----	1	*HANDLE, Right Upper (Included with Ref. No. 0090)
0100	770116	1	KIT, UPPER HANDLE, LEFT (Incl. Ref. Nos. 17, 20, 33, 34, 35, 37 & 38)
20	----	1	*BOLT, Blade (Included with Ref. No. 0100)
33	----	2	*WASHER, Blade (Included with Ref. No. 0100)
34	----	2	*KNOB (Included with Ref. No. 0100)
17	----	1	*GRIP (Included with Ref. No. 0100)
35	----	1	*HANDLE, Left Upper (Included with Ref. No. 0100)
37	----	1	*ROD, Chute Rotator (Included with Ref. No. 0100)
38	----	1	*RING, Rubber, Chute Rotator Rod (Included with Ref. No. 0100)
0110	707806	1	KIT, LOWER HANDLE HARDWARE (Incl. Ref. Nos. 21, 22, 23 & 24)
21	----	2	*SCREW, Hex head (Included with Ref. No. 0110)
22	----	2	*WASHER (Included with Ref. No. 0110)
23	----	2	*SCREW, Hex head (Included with Ref. No. 0110)
24	----	4	*WASHER, Flat (Included with Ref. No. 0110)
0120	707807	1	KIT, LOWER HANDLE (Incl. Ref. Nos. 21, 22, 23, 24 & 32)
21	----	2	*SCREW, Hex head (Included with Ref. No. 0120)
22	----	2	*WASHER (Included with Ref. No. 0120)
23	----	2	*SCREW, Hex head (Included with Ref. No. 0120)
24	----	4	*WASHER, Flat (Included with Ref. No. 0120)
32	----	1	*HANDLE, Lower (Included with Ref. No. 0120)
0310	707818	1	KIT, SHIFT ROD (Incl. Ref. Nos. 39, 40, 41, 42, 43, 44, 45, 46, 47 & 48)
39	----	2	*PIN (Included with Ref. No. 0310)
40	----	2	*WASHER, Flat (Included with Ref. No. 0310)
41	----	1	*ROD, Upper, Speed Control (Included with Ref. No. 0310)
42	----	1	*SCREW, Hex head (Included with Ref. No. 0310)
43	----	1	*SLEEVE, Regulating, Drive Rod (Included with Ref. No. 0310)
44	----	1	*NUT, Hex head (Included with Ref. No. 0310)
45	----	1	*ROD, Upper, Speed Control (Included with Ref. No. 0310)
46	----	2	*SPRING, Regulating (Included with Ref. No. 0310)
47	----	1	*ARM, Shift Fork (Included with Ref. No. 0310)
48	----	1	*PIN, Spring (Included with Ref. No. 0310)
0590	709539	1	KIT, SHIFT ROD HARDWARE (Incl. Ref. Nos. 39, 40, 41, 46, 47 & 48)
39	----	2	*PIN (Included with Ref. No. 0590)
40	----	1	*WASHER, Flat (Included with Ref. No. 0590)
46	----	1	*SPRING, Regulating (Included with Ref. No. 0590)
47	----	1	*ARM, Shift Fork (Included with Ref. No. 0590)
48	----	1	*PIN, Spring (Included with Ref. No. 0590)

### Footnotes

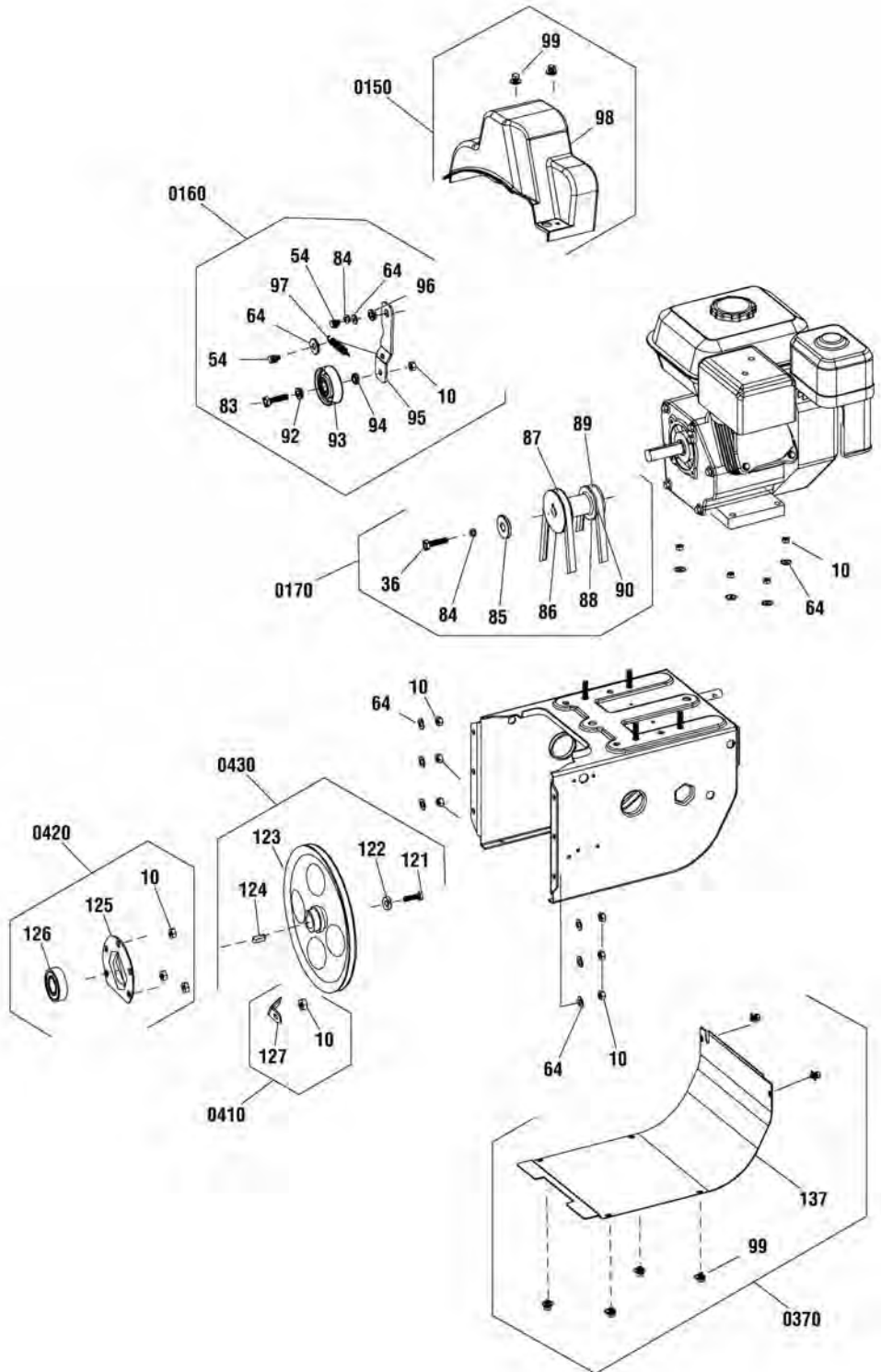
Note:\* Not a serviceable part.

The above parts group applies to the following Mfg. Nos.:

1696610-01 - 1024LD

## Engine & Frame Group

NOTE: Unless noted otherwise,  
use the standard hardware torque  
specification chart.



The above parts group applies to the following Mfg. Nos.:  
1696610-01 - 1024LD



## Engine & Frame Group

REF NO	PART NO.	QTY.	DESCRIPTION
0150	707810	1	KIT, BELT COVER (Incl. Ref. Nos. 98 & 99)
98	-----	1	*COVER, Belt (Included with Ref. No. 0150)
99	-----	10	*SCREW, Hex head (Included with Ref. No. 0150)
0160	707836	1	KIT, IDLER PULLEY, TRACTION DRIVE (Incl. Ref. Nos. 10, 54, 64, 83, 84, 92, 93, 94, 95, 96 & 97)
10	-----	1	*NUT, Lock, Hex Head, non-metal (Included with Ref. No. 0160)
64	-----	2	*WASHER, Flat (Included with Ref. No. 0160)
54	-----	2	*SCREW, Hex head (Included with Ref. No. 0160)
83	-----	1	*SCREW, Hex head (Included with Ref. No. 0160)
84	-----	3	*WASHER, Spring (Included with Ref. No. 0160)
92	-----	1	*WASHER (Included with Ref. No. 0160)
94	-----	1	*PAD, small tensioning wheel (Included with Ref. No. 0160)
93	-----	1	*ASSEMBLY, Small Tensioning wheel (Included with Ref. No. 0160)
95	-----	1	*PLATE, Small Tensioning (Included with Ref. No. 0160)
96	-----	1	*PAD, small tensioning plate (Included with Ref. No. 0160)
97	-----	1	*SPRING (Included with Ref. No. 0160)
87	707584	1	BELT, Auger Drive
89	707585	1	BELT, Traction Drive
0170	770117	1	KIT, ENGINE PULLEY (Incl. Ref. Nos. 36, 84, 85, 86, 88, 90, 91)
36	-----	1	*SCREW, Hex head (Included with Ref. No. 0170)
84	-----	3	*WASHER, Spring (Included with Ref. No. 0170)
85	-----	1	*WASHER, Flat (Included with Ref. No. 0170)
86	-----	1	*PULLEY, Impeller drive (Included with Ref. No. 0170)
88	-----	1	*RING, Retainer, Synch-pulley (Included with Ref. No. 0170)
90	-----	1	*SYNCH-PULLEY (Included with Ref. No. 0170)
0370	707542	1	KIT, BOTTOM COVER (Incl. Ref. Nos. 99 & 137)
99	-----	10	*SCREW, Hex head (Included with Ref. No. 0370)
137	-----	1	*COVER, Motor Box Lower (Included with Ref. No. 0370)
0410	707547	1	KIT, BELT GUIDE, AUGER (Incl. Ref. Nos. 10 & 127)
10	-----	1	*NUT, Lock, Hex Head, non-metal (Included with Ref. No. 0410)
127	-----	1	*BELT, Backup Bar (Included with Ref. No. 0410)
0420	707548	1	KIT, BEARING HARDWARE, AUGER PULLEY (Incl. Ref. Nos. 10, 125 & 126)
10	-----	3	*NUT, Lock, Hex Head, non-metal (Included with Ref. No. 0420)
125	-----	1	*COVER, Round bottom (Included with Ref. No. 0420)
126	-----	1	*BEARING, Ball (Included with Ref. No. 0420)
0430	707823	1	KIT, AUGER PULLEY (Incl. Ref. Nos. 121, 122, 123 & 124)
121	-----	1	*SCREW, Hex head (Included with Ref. No. 0430)
122	-----	1	*WASHER, Flat (Included with Ref. No. 0430)
123	-----	1	*PULLEY, Driven (Included with Ref. No. 0430)
124	-----	1	*KEY, Flat (Included with Ref. No. 0430)
10	-----	10	*NUT, Lock, Hex Head, non-metal
64	-----	10	*WASHER, Flat

### Footnotes

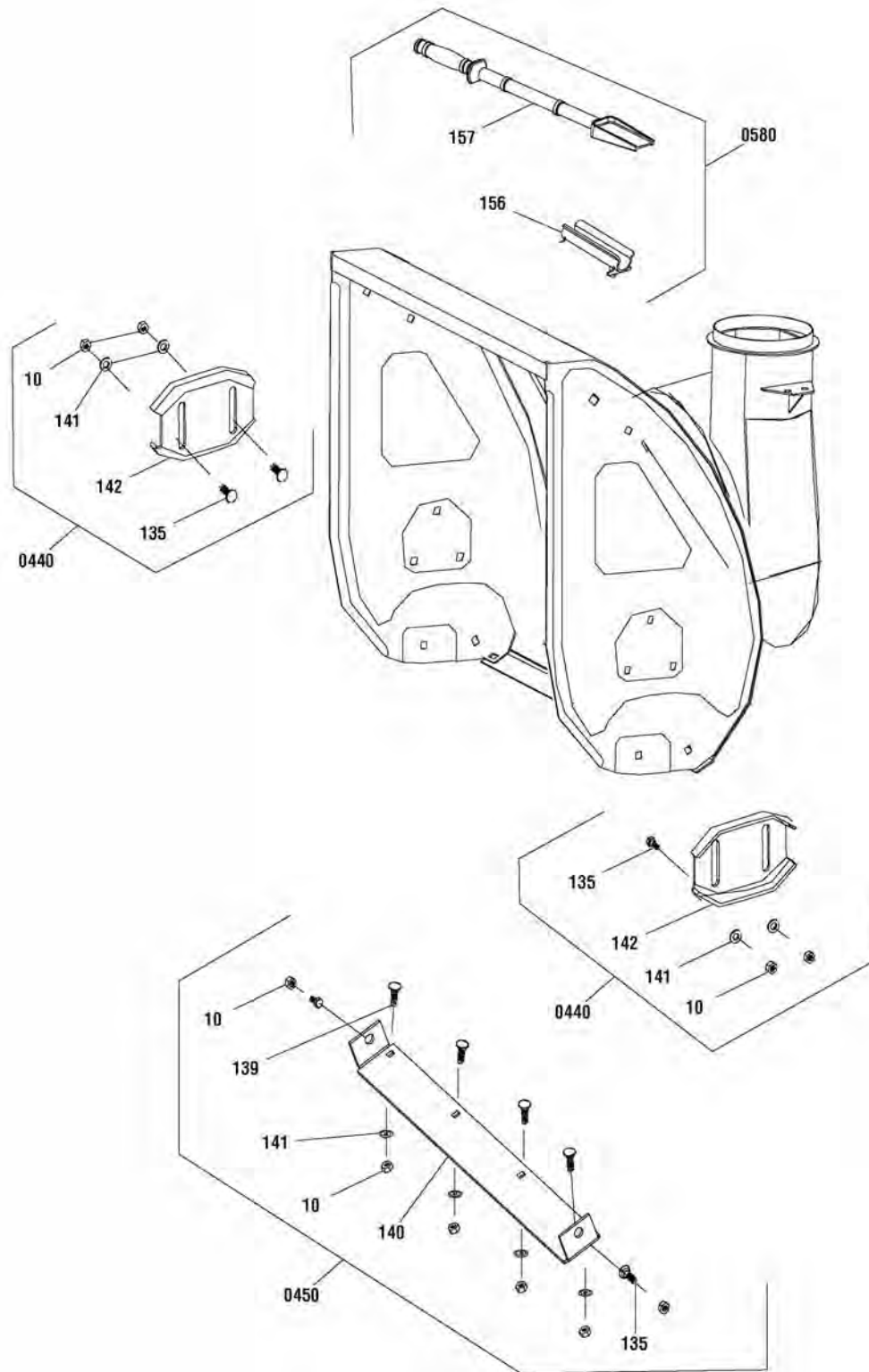
Note:\* Not a serviceable part.

The above parts group applies to the following Mfg. Nos.:

1696610-01 - 1024LD

## Auger Housing Group

NOTE: Unless noted otherwise,  
use the standard hardware torque  
specification chart.



The above parts group applies to the following Mfg. Nos.:  
1696610-01 - 1024LD

## Auger Housing Group

REF NO	PART NO.	QTY.	DESCRIPTION
0440	707550	1	KIT, SKID SHOE (Incl. Ref. Nos. 10, 135, 141 & 142)
10	-----	4	*NUT, Lock, Hex Head, non-metal (Included with Ref. No. 0440)
135	-----	6	*BOLT, Square Neck, Cup head (Included with Ref. No. 0440)
141	-----	8	*WASHER, Flat (Included with Ref. No. 0440)
142	-----	2	*SHOE, Skid (Included with Ref. No. 0440)
0450	707754	1	KIT, SCRAPER BAR (Incl. Ref. Nos. 10, 138, 139, 140 & 141)
10	-----	4	*NUT, Lock, Hex Head, non-metal (Included with Ref. No. 0450)
135	-----	2	*BOLT, Square Neck, Cup head (Included with Ref. No. 0450)
139	-----	6	*BOLT, Square Neck, Cup head (Included with Ref. No. 0450)
140	-----	1	*BAR, Housing Scraper (Included with Ref. No. 0450)
141	-----	8	*WASHER, Flat (Included with Ref. No. 0450)
0580	707549	1	KIT, CLEANOUT BRUSH STICK (Incl. Ref. Nos. 156 & 157)
156	-----	1	*BASE, Shovel (Included with Ref. No. 0580)
157	-----	1	*SHOVEL, Plastic (Included with Ref. No. 0580)

Not for  
Reproduction

### Footnotes

Note:\* Not a serviceable part.

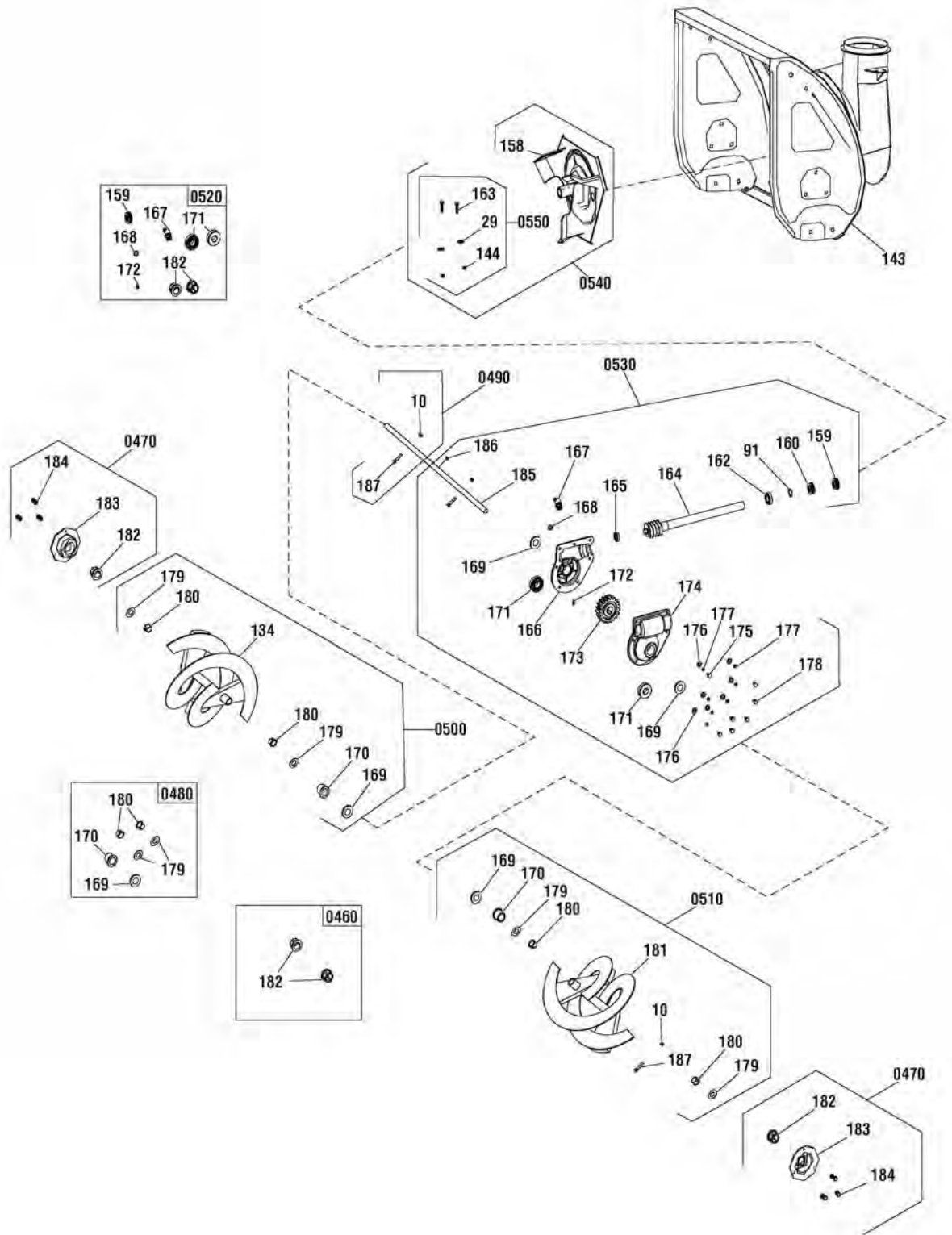
---

The above parts group applies to the following Mfg. Nos.:

1696610-01 - 1024LD

# Auger Drive Group

NOTE: Unless noted otherwise, use the standard hardware torque specification chart.



The above parts group applies to the following Mfg. Nos.:  
1696610-01 - 1024LD

## Auger Drive Group

REF NO	PART NO.	QTY.	DESCRIPTION
0460	707755	1	KIT, BUSHING, AUGER
182	----	2	*SLEEVE, Shaft (Included with Ref. No. 0460)
0470	707824	1	KIT, MOUNTING PLATE, AUGER HOUSING (Incl. Ref. Nos. 182, 183 & 184)
182	----	2	*SLEEVE, Shaft (Included with Ref. No. 0470)
183	----	2	*CAP, Bearing (Included with Ref. No. 0470)
184	----	6	*SCREW, Hex head (Included with Ref. No. 0470)
0480	707756	1	KIT, AUGER SHAFT HARDWARE (Incl. Ref. Nos. 169, 170, 179 & 180)
169	----	2	*WASHER, Flat (Included with Ref. No. 0480)
170	----	2	*SLEEVE, Output shaft (Included with Ref. No. 0480)
179	----	4	*WASHER, Flat Washer (Included with Ref. No. 0480)
180	----	4	*SLEEVE, Driven Shaft (Included with Ref. No. 0480)
0490	707555	1	KIT, SHEAR PIN, AUGER (Incl. Ref. Nos. 10 & 187)
10	----	2	*NUT, Lock, Hex Head, non-metal (Included with Ref. No. 0490)
187	----	2	*BOLT, Auger Shear (Included with Ref. No. 0490)
0500	707825	1	KIT, AUGER ASSEMBLY, RIGHT (Incl. Ref. Nos. 10, 134, 169, 170, 179, 180 & 187)
10	----	1	*NUT, Lock, Hex Head, non-metal (Included with Ref. No. 0500)
187	----	1	*BOLT, Auger Shear (Included with Ref. No. 0500)
170	----	1	*SLEEVE, Output shaft (Included with Ref. No. 0500)
179	----	2	*WASHER, Flat (Included with Ref. No. 0500)
180	----	2	*SHAFT, Sleeve, Driven (Included with Ref. No. 0500)
169	----	1	*WASHER, Flat (Included with Ref. No. 0500)
134	----	1	*AUGER, Right (Included with Ref. No. 0500)
0510	707826	1	KIT, AUGER ASSEMBLY, LEFT (Incl. Ref. Nos. 10, 169, 170, 179, 180, 181 & 187)
10	----	1	*NUT, Lock, Hex Head, non-metal (Included with Ref. No. 0510)
187	----	1	*BOLT, Auger Shear (Included with Ref. No. 0510)
170	----	1	*SLEEVE, Output shaft (Included with Ref. No. 0510)
179	----	2	*WASHER, Flat (Included with Ref. No. 0510)
180	----	2	*SLEEVE, Driven Shaft (Included with Ref. No. 0510)
181	----	1	*AUGER, Left (Included with Ref. No. 0510)
169	----	1	*WASHER, Flat (Included with Ref. No. 0510)
0520	707757	1	KIT, SEAL, GEARBOX (Incl. Ref. Nos. 159, 167, 168, 171, 172, 182 & 186)
159	----	1	*SEAL, Oil (Included with Ref. No. 0520)
167	----	1	*NIPPLE, Oil (Included with Ref. No. 0520)
168	----	1	*GASKET, Corrugated (Included with Ref. No. 0520)
171	----	2	*SEAL, Oil (Included with Ref. No. 0520)
172	----	1	*BOLT, Phillips head (Included with Ref. No. 0520)
182	----	2	*SLEEVE, Shaft (Included with Ref. No. 0520)
186	----	1	*KEY, Woodruff (Included with Ref. No. 0520)
0530	707827	1	KIT, GEARBOX, AUGER (Incl. Ref. Nos. 91, 159, 160, 162, 164, 165, 166, 167, 168, 169, 171, 172, 173, 174, 175, 176, 177, 178, 185 & 186)
159	----	1	*SEAL, Oil (Included with Ref. No. 0530)
160	----	1	*BEARING, Single thrust ball (Included with Ref. No. 0530)
91	----	1	*SPACER (Included with Ref. No. 0530)

### Footnotes

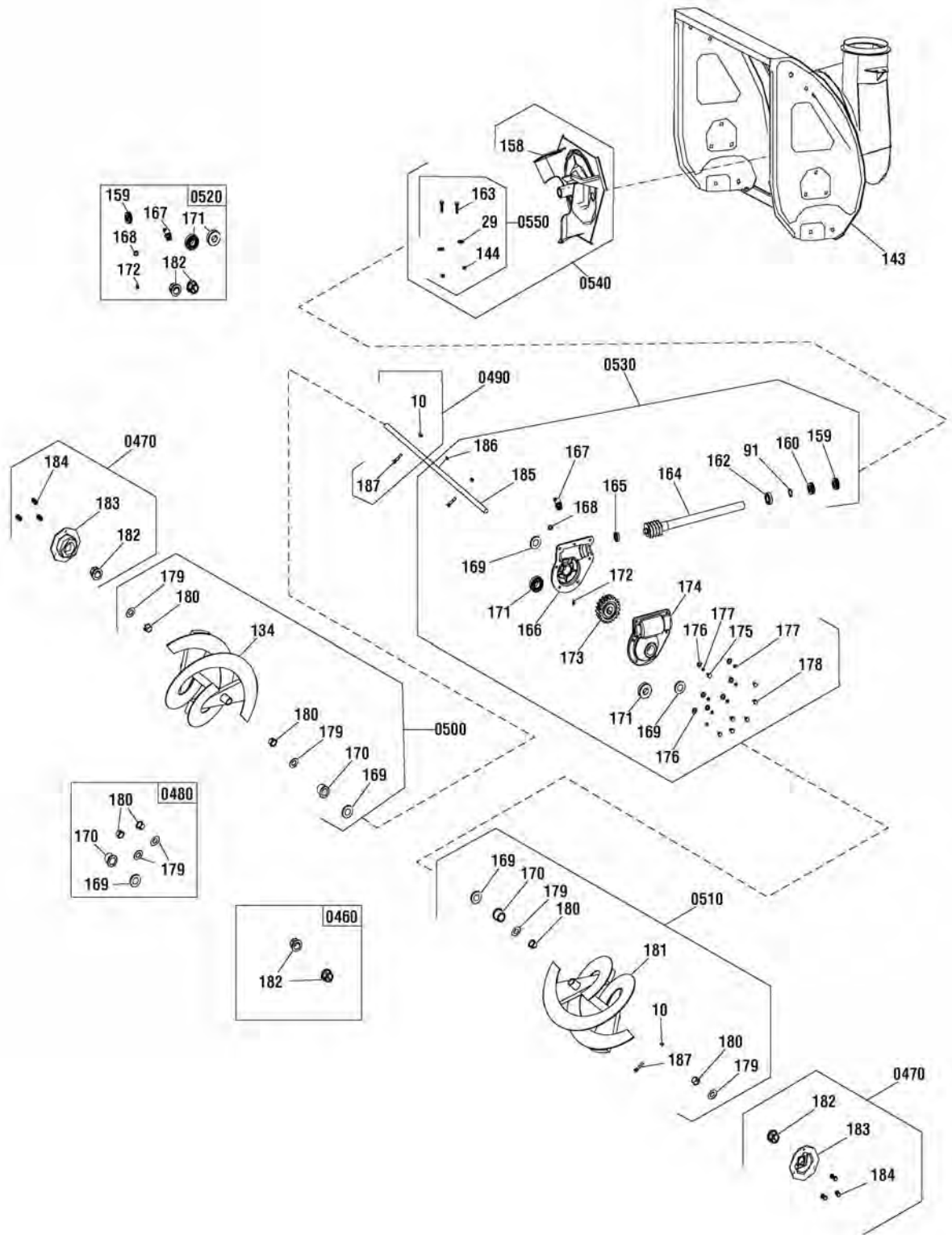
Note:\* Not a serviceable part.

The above parts group applies to the following Mfg. Nos.:

1696610-01 - 1024LD

# Auger Drive Group

NOTE: Unless noted otherwise, use the standard hardware torque specification chart.



The above parts group applies to the following Mfg. Nos.:  
1696610-01 - 1024LD

## Auger Drive Group

REF NO	PART NO.	QTY.	DESCRIPTION
164	----	1	*SHAFT, Worm (Included with Ref. No. 0530)
165	----	1	*BEARING, Deep groove ball (Included with Ref. No. 0530)
166	----	1	*GEARBOX, Right (Included with Ref. No. 0530)
167	----	1	*NIPPLE, Oil (Included with Ref. No. 0530)
168	----	1	*GASKET, Corrugated (Included with Ref. No. 0530)
169	----	2	*WASHER, Flat (Included with Ref. No. 0530)
171	----	2	*SEAL, Oil (Included with Ref. No. 0530)
172	----	1	*BOLT, Phillips head (Included with Ref. No. 0530)
173	----	1	*WHEEL, Worm (Included with Ref. No. 0530)
174	----	1	*GEARBOX, Left (Included with Ref. No. 0530)
175	----	1	*SCREW, Hex head (Included with Ref. No. 0530)
176	----	7	*WASHER, Flat (Included with Ref. No. 0530)
177	----	7	*WASHER, Spring (Included with Ref. No. 0530)
178	----	6	*SCREW, Hex head (Included with Ref. No. 0530)
185	----	1	*SHAFT, Auger (Included with Ref. No. 0530)
186	----	1	*KEY, Woodruff (Included with Ref. No. 0530)
0540	707828	1	KIT, IMPELLER ASSEMBLY (Incl. Ref. Nos. 29, 144, 158 & 163)
163	----	2	*SCREW, Fixed, Impeller (Included with Ref. No. 0540)
29	----	3	*WASHER, Flat (Included with Ref. No. 0540)
144	----	2	*NUT, Lock, Hex Head, non-metal (Included with Ref. No. 0540)
158	----	1	*IMPELLER (Included with Ref. No. 0540)
0550	707758	1	KIT, SHEAR PIN, IMPELLER (Incl. Ref. Nos. 29, 144 & 163)
163	----	2	*SCREW, Fixed, Impeller (Included with Ref. No. 0550)
29	----	3	*WASHER, Flat (Included with Ref. No. 0550)
144	----	2	*NUT, Lock, Hex Head, non-metal (Included with Ref. No. 0550)

### Footnotes

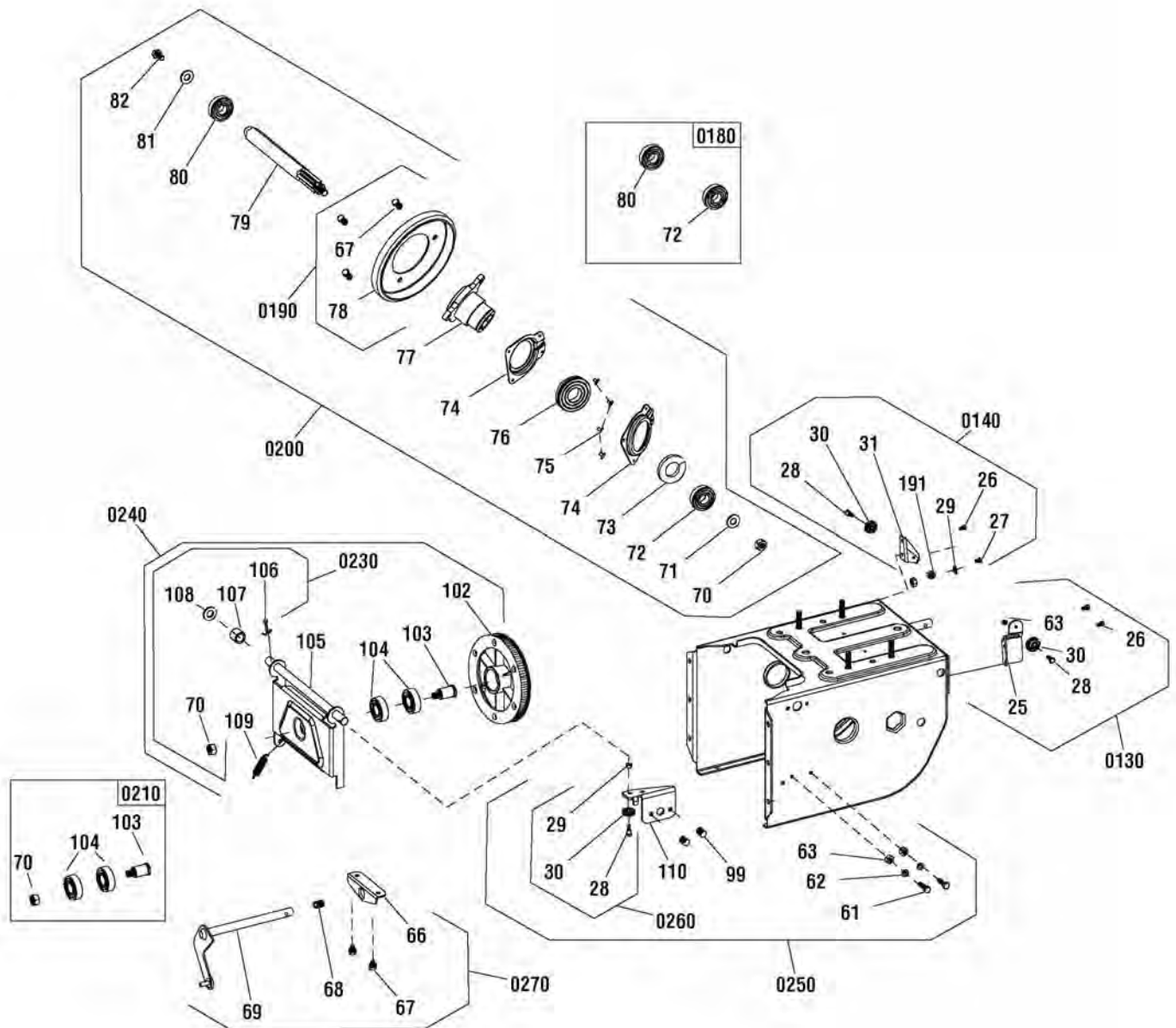
Note:\* Not a serviceable part.

The above parts group applies to the following Mfg. Nos.:

1696610-01 - 1024LD

## Traction Drive Group

NOTE: Unless noted otherwise,  
use the standard hardware torque  
specification chart.



The above parts group applies to the following Mfg. Nos.:  
1696610-01 - 1024LD



## Traction Drive Group

REF NO	PART NO.	QTY.	DESCRIPTION
0130	707808	1	KIT, CABLE BASE, AUGER DRIVE (Incl. Ref. Nos. 25, 26, 28, 29, 30 & 63)
25	----	1	*BASE, Cable (Included with Ref. No. 0130)
26	----	3	*SCREW, Hex head (Included with Ref. No. 0130)
28	----	3	*BOLT (Included with Ref. No. 0130)
63	----	2	*SCREW, Flange, Hex head (Included with Ref. No. 0130)
30	----	3	*PULLEY, Cable (Included with Ref. No. 0130)
0140	707809	1	KIT, CABLE BASE, TRACTION DRIVE (Incl. Ref. Nos. 26, 27, 28, 29, 30, 31 & 191)
26	----	3	*SCREW, Hex head (Included with Ref. No. 0140)
27	----	1	*SCREW, Hex head (Included with Ref. No. 0140)
28	----	3	*BOLT (Included with Ref. No. 0140)
29	----	3	*WASHER, Flat (Included with Ref. No. 0140)
29	----	3	*WASHER, Flat (Included with Ref. No. 0140)
191	----	2	*NUT (Included with Ref. No. 0140)
30	----	3	*PULLEY, Cable (Included with Ref. No. 0140)
31	----	1	*PLATE, Mounting, pulley (Included with Ref. No. 0140)
0180	707839	1	KIT, BEARING, FRICTION WHEEL (Incl. Ref. Nos. 72 & 80)
80	----	1	*BEARING, Ball, Deep groove (Included with Ref. No. 0180)
72	----	1	*BEARING, Ball, Deep groove (Included with Ref. No. 0180)
0190	707840	1	KIT, FRICTION WHEEL (Incl. Ref. Nos. 67 & 78)
67	----	5	*SCREW, Hex head (Included with Ref. No. 0190)
78	----	1	*WHEEL, Rubber friction (Included with Ref. No. 0190)
0200	707811	1	KIT, FRICTION WHEEL AND SHAFT (Incl. Ref. Nos. 67, 70, 71, 72, 73, 74, 75, 76, 77, 78, 79, 80, 81 & 82)
67	----	5	*SCREW, Hex head (Included with Ref. No. 0200)
70	----	2	*NUT, Lock, Hex Head, non-metal (Included with Ref. No. 0200)
71	----	1	*WASHER, Flat (Included with Ref. No. 0200)
72	----	1	*BEARING, Ball, Deep groove (Included with Ref. No. 0200)
73	----	1	*CIRCLIP, Shaft (Included with Ref. No. 0200)
74	----	2	*SHAFTCAP, Friction wheel (Included with Ref. No. 0200)
75	----	4	*RIVET, Aluminum flat head (Included with Ref. No. 0200)
76	----	1	*BEARING (Included with Ref. No. 0200)
77	----	1	*WHEEL, Friction (Included with Ref. No. 0200)
78	----	1	*WHEEL, Rubber friction (Included with Ref. No. 0200)
79	----	1	*SHAFT, Hexagonal gear (Included with Ref. No. 0200)
80	----	1	*BEARING, Ball, Deep groove (Included with Ref. No. 0200)
81	----	1	*WASHER, Flat (Included with Ref. No. 0200)
82	----	1	*SCREW, Hex head (Included with Ref. No. 0200)
0210	707539	1	KIT, BEARING, SWING PLATE (Incl. Ref. Nos. 70, 103 & 104)
70	----	2	*NUT, Lock, Hex Head, non-metal (Included with Ref. No. 0210)
103	----	1	*SHAFT, Drive disk (Included with Ref. No. 0210)
104	----	2	*BEARING, Ball, Deep groove (Included with Ref. No. 0210)
0230	707538	1	KIT, SPRING, SWINGING PLATE (Incl. Ref. Nos. 106, 107, 108 & 109)
106	----	1	*SPLITPIN (Included with Ref. No. 0230)

### Footnotes

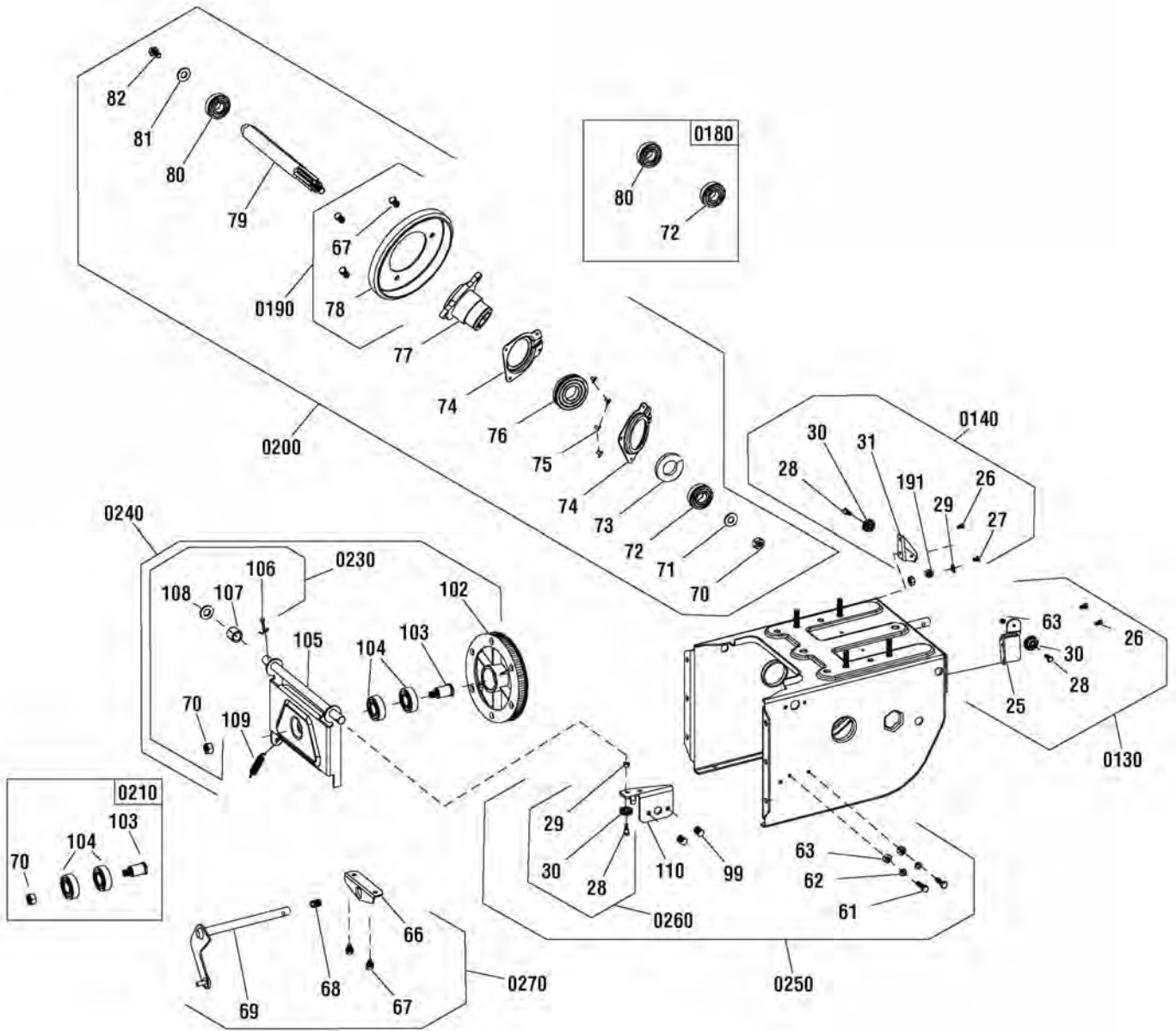
Note:\* Not a serviceable part.

The above parts group applies to the following Mfg. Nos.:

1696610-01 - 1024LD

# Traction Drive Group

NOTE: Unless noted otherwise, use the standard hardware torque specification chart.



The above parts group applies to the following Mfg. Nos.:  
1696610-01 - 1024LD

## Traction Drive Group

REF NO	PART NO.	QTY.	DESCRIPTION
108	----	1	*WASHER, Flat (Included with Ref. No. 0230)
109	----	1	*SPRING (Included with Ref. No. 0230)
0240	707540	1	KIT, SWINGING PLATE (Incl. Ref. Nos. 70, 102, 103, 104, 105, 106, 107, 108 & 109)
70	----	2	*NUT, Lock, Hex Head, non-metal (Included with Ref. No. 0240)
102	----	1	*ASSEMBLY, Synch-pulley (Included with Ref. No. 0240)
103	----	1	*SHAFT, Drive disk (Included with Ref. No. 0240)
104	----	2	*BEARING, Ball, Deep groove (Included with Ref. No. 0240)
105	----	1	*BRACKET, drive disk (Included with Ref. No. 0240)
106	----	1	*SPLITPIN (Included with Ref. No. 0240)
107	----	1	*SLEEVE (Included with Ref. No. 0240)
108	----	1	*WASHER, Flat (Included with Ref. No. 0240)
109	----	1	*SPRING (Included with Ref. No. 0240)
0250	707815	1	KIT, BRACKET, SWINGING PLATE (Incl. Ref. Nos. 28, 29, 30, 61, 62, 63, 99 & 110)
61	----	2	*SCREW, Hex head (Included with Ref. No. 0250)
62	----	2	*WASHER (Included with Ref. No. 0250)
63	----	2	*SCREW, Flange, Hex head (Included with Ref. No. 0250)
28	----	3	*BOLT (Included with Ref. No. 0250)
29	----	3	*WASHER, Flat (Included with Ref. No. 0250)
30	----	3	*PULLEY, Cable (Included with Ref. No. 0250)
99	----	10	*SCREW, Hex head (Included with Ref. No. 0250)
110	----	1	*PLATE, Belt Pressing (Included with Ref. No. 0250)
0260	707816	1	KIT, PULLEY, CABLE (Incl. Ref. Nos. 28, 29 & 30)
28	----	3	*BOLT (Included with Ref. No. 0260)
29	----	3	*WASHER, Flat (Included with Ref. No. 0260)
30	----	3	*PULLEY, Cable (Included with Ref. No. 0260)
0270	707817	1	KIT, SHIFT ROD ASSEMBLY (Incl. Ref. Nos. 66, 67, 68 & 69)
66	----	1	*BASE, Shift fork (Included with Ref. No. 0270)
67	----	5	*SCREW, Hex head (Included with Ref. No. 0270)
68	----	1	*SPRING, Regulating (Included with Ref. No. 0270)
69	----	1	*ASSEMBLY, Shift fork (Included with Ref. No. 0270)

### Footnotes

Note:\* Not a serviceable part.

The above parts group applies to the following Mfg. Nos.:

1696610-01 - 1024LD



## Wheels & Tires Group

REF NO	PART NO.	QTY.	DESCRIPTION
0320	707530	1	KIT, BEARING HARDWARE, AXLE (Incl. Ref. Nos. 53, 55 & 59)
53	-----	1	*CIRCLIP, Shaft (Included with Ref. No. 0320)
55	-----	1	*KEY, Woodruff (Included with Ref. No. 0320)
59	-----	1	*PIN, Spring (Included with Ref. No. 0320)
0330	707532	1	KIT, AXLE SLEEVE (Incl. Ref. No. 52)
52	-----	2	*SLEEVE, Axle (Included with Ref. No. 0330)
0340	770118	1	KIT, AXLE AND SPROCKET (Incl. Ref. Nos. 52, 53, 55, 56, 57 & 59)
52	-----	2	*SLEEVE, Axle (Included with Ref. No. 0340)
53	-----	1	*CIRCLIP, Shaft (Included with Ref. No. 0340)
55	-----	1	*KEY, Woodruff (Included with Ref. No. 0340)
59	-----	1	*PIN, Spring (Included with Ref. No. 0340)
56	-----	1	*GEAR, Driven (Included with Ref. No. 0340)
57	-----	1	*SHAFT, Driven wheel (Included with Ref. No. 0340)
0350	707842	1	KIT, WHEEL AND TIRE, RIGHT, SNOW SILVER (Incl. Ref. No. 49, 50, 51 & 58)
49	-----	1	*ASSEMBLY, Tire, Right (Included with Ref. No. 0350)
-----	80014742	1	TREAD, Tire (Included with Ref. No. 0350)
50	-----	2	*GASKET, Corrugated (Included with Ref. No. 0350)
51	-----	2	*WASHER, Flat (Included with Ref. No. 0350)
58	709530	2	*PIN, Klik (Included with Ref. No. 0350)
0360	707844	1	KIT, WHEEL AND TIRE, LEFT, SNOW SILVER (Incl. Ref. Nos. 50, 51, 58 & 60)
50	-----	2	*GASKET, Corrugated (Included with Ref. No. 0360)
51	-----	2	*WASHER, Flat (Included with Ref. No. 0360)
58	709530	2	*PIN, Klik (Included with Ref. No. 0360)
60	-----	1	*ASSEMBLY, Tire, Left (Included with Ref. No. 0360)
-----	80014742	1	TREAD, Tire (Included with Ref. No. 0360)

### Footnotes

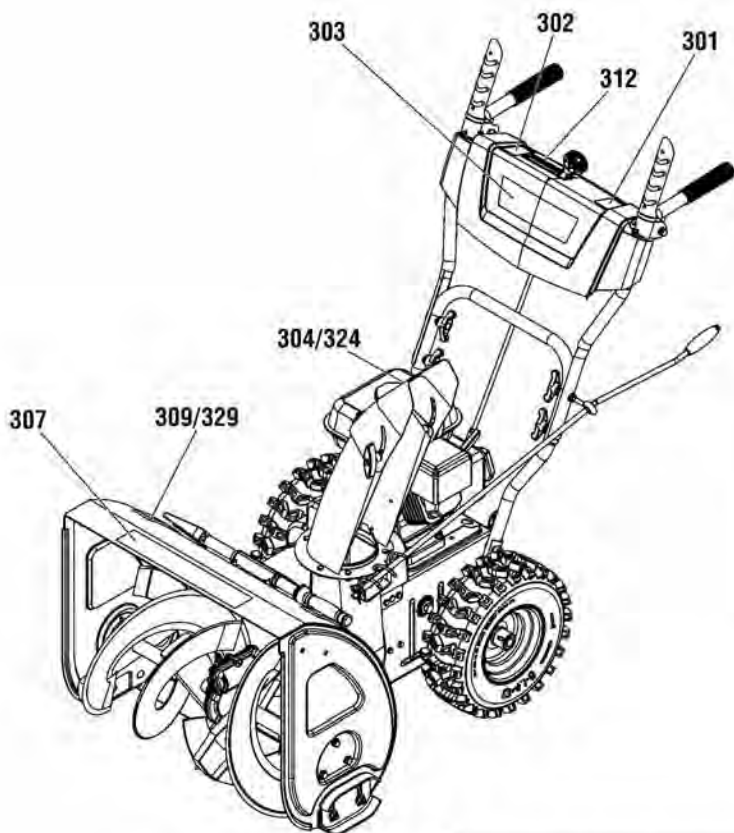
Note:\* Not a serviceable part.

The above parts group applies to the following Mfg. Nos.:

1696610-01 - 1024LD

# Decals Group

NOTE: Unless noted otherwise, use the standard hardware torque specification chart.



**⚠ DANGER**  
**Amputation hazard**  
 Contact with moving parts inside chute will cause serious injury.  
 • Shut off engine before unclogging discharge chute.  
 • Use clean-out tool, not hands!  
**Risque d'amputation**  
 Tout contact avec des pièces en mouvement à l'intérieur de la goulotte provoquera de graves blessures.  
 • Arrêter le moteur avant de débarrasser la goulotte d'éjection.  
 • Utiliser l'outil de débarrassage, pas les mains!

304



324

**⚠ DANGER**  
**Amputation hazard**  
 • Contact with moving parts inside chute will cause serious injury.  
 • Shut off engine, and use clean-out tool.  
 • Use clean-out tool, not hands!  
**Risque d'amputation**  
 • Au contact avec les pièces en mouvement à l'intérieur de la goulotte, des blessures graves peuvent survenir.  
 • Arrêter le moteur et utiliser l'outil de débarrassage.  
 • Utiliser l'outil de débarrassage, pas les mains!

309



329



301



312



303



302



307

The above parts group applies to the following Mfg. Nos.:  
 1696610-01 - 1024LD

## Decals Group

REF NO	PART NO.	QTY.	DESCRIPTION
1	707878	1	KIT-DECAL, Briggs 1024LD (Incl. Ref. No. 301, 302, 303, 304, 307, 309 & 312)
2	707881	1	KIT-DECAL, Briggs 1024LD, Export (Incl. Ref. No. 301, 302, 303, 307, 312, 324 & 329)
301	-----	1	*DECAL, Auger Control (Included with Ref. No. 1 & 2) (Included with Dash Kit)
302	-----	1	*DECAL, Traction Control (Included with Ref. No. 1 & 2) (Included with Dash Kit)
303	-----	1	*DECAL, Control Panel, Briggs & Stratton (Included with Ref. No. 1 & 2)
304	1737865YP	1	DECAL, Danger Chute (Included with Ref. No. 1)
307	-----	1	*DECAL, Auger Housing, 1024LD (Included with Ref. No. 1 & 2)
309	1737866YP	1	DECAL, Danger Foot (Included with Ref. No. 1)
312	-----	1	*DECAL, 1-6 Transmission Speed Control (Included with Ref. No. 1 & 2) (Included with Dash Kit)
324	1727207SM	1	DECAL, Chute Warning, Export (Included with Ref. No. 2)
329	1737867YP	1	DECAL, Danger Auger Icons, Export (Included with Ref. No. 2)

Not for  
Reproduction

### Footnotes

Note:\* Not a serviceable part.

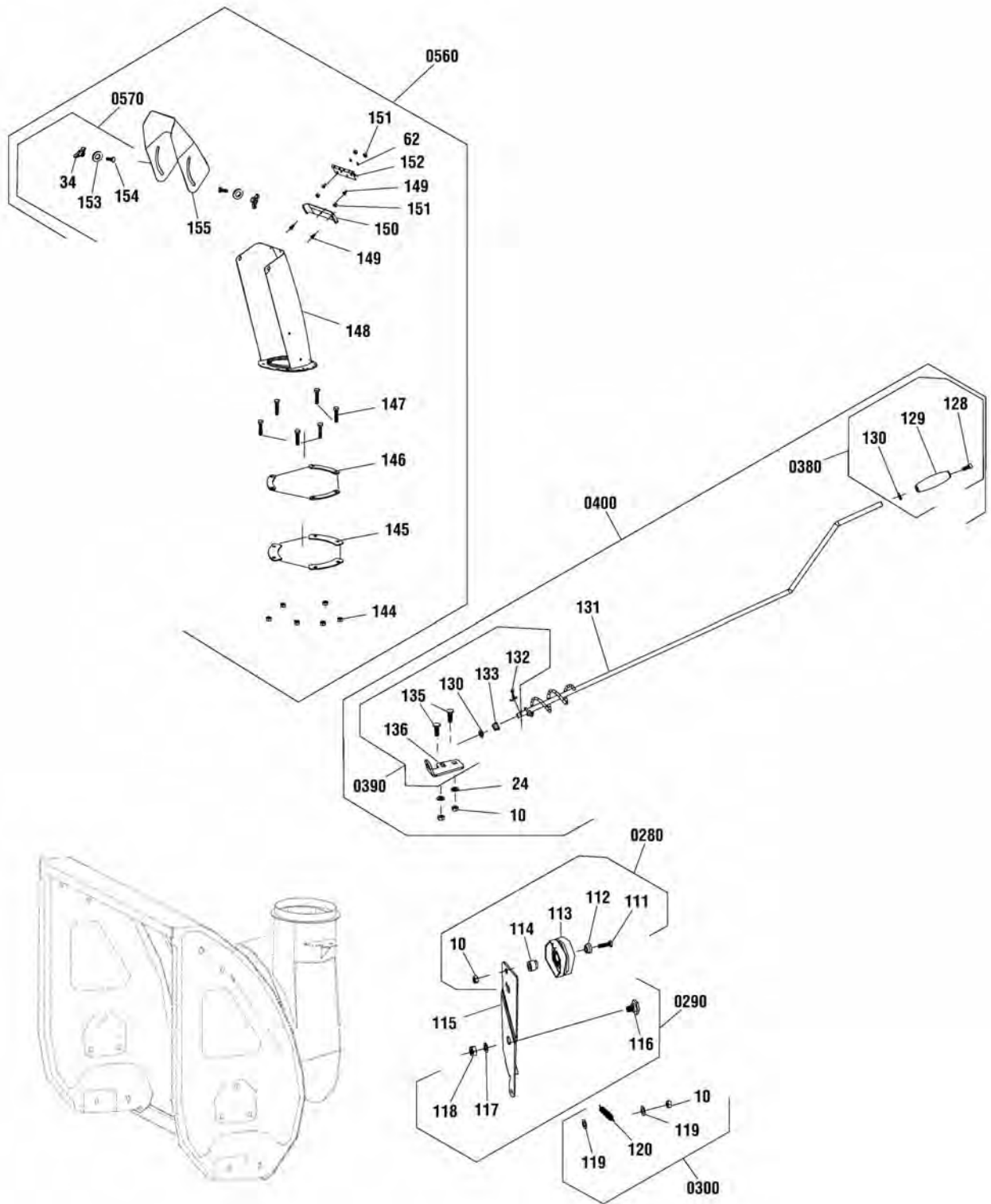
---

**The above parts group applies to the following Mfg. Nos.:**

1696610-01 - 1024LD

## Discharge Chute Group

NOTE: Unless noted otherwise,  
use the standard hardware torque  
specification chart.



The above parts group applies to the following Mfg. Nos.:  
1696610-01 - 1024LD



## Discharge Chute Group

REF NO	PART NO.	QTY.	DESCRIPTION
0280	707566	1	KIT-IDLER PULLEY, TENSION PLATE (Incl. Ref. No. 111, 112, 113, 114, 115 & 10)
111	--	1	* SCREW, Hex head (Included with Ref. No. 0280)
112	--	1	* WASHER (Included with Ref. No. 0280)
113	--	1	* COVER, Large tensioning wheel (Included with Ref. No. 0280)
114	--	1	* SLEEVE, Washer (Included with Ref. No. 0280)
10	--	1	* NUT, Lock, Hex Head, non-metal (Included with Ref. No. 0280)
115	709964	1	PLATE, Large tensioning
0290	707565	1	KIT-HARDWARE, IDLER BRACKET (Incl. Ref. No. 116, 117 & 118)
116	--	1	* BOLT, Hexagonal nut (Included with Ref. No. 0290)
117	--	1	* WASHER, Flat (Included with Ref. No. 0290)
118	--	1	* NUT, Lock, Hex Head, non-metal (Included with Ref. No. 0290)
0300	707841	1	KIT-SPRING, IDLER PULLEY (Incl. Ref. No. 119, 120 & 10)
119	--	2	* WASHER, Flat (Included with Ref. No. 0300)
120	--	1	* SPRING (Included with Ref. No. 0300)
10	--	1	* NUT, Lock, Hex Head, non-metal (Included with Ref. No. 0300)
0380	707820	1	KIT-HANDLE, CHUTE ROD (Incl. Ref. No. 128, 129 & 130)
128	--	1	* SCREW, Flange, Hex head (Included with Ref. No. 0380)
129	--	1	* GRIP, Handle, Chute Rotator (Included with Ref. No. 0380)
130	--	2	* WASHER, Flat (Included with Ref. No. 0380)
0390	707821	1	KIT-MOUNTING PLATE, CHUTE ROTATION (Incl. Ref. No. 10, 24, 132, 133, 130, 135 & 136)
10	--	2	* NUT, Lock, Hex Head, non-metal (Included with Ref. No. 0390)
24	--	4	* WASHER, Flat (Included with Ref. No. 0390)
132	--	1	* SPLITPIN (Included with Ref. No. 0390)
133	--	1	* RING, Plastic, Mounting plate (Included with Ref. No. 0390)
130	--	1	* WASHER, Flat (Included with Ref. No. 0390)
135	--	6	* BOLT, Square Neck, Cup head (Included with Ref. No. 0390)
136	--	1	* PLATE, Mounting, Chute Rotator (Included with Ref. No. 0390)
0400	707822	1	KIT-CHUTE ROTATION (Incl. Ref. No. 10, 24, 128, 129, 130, 131, 132, 133, 135 & 136)
10	--	2	* NUT, Lock, Hex Head, non-metal (Included with Ref. No. 0400)
24	--	4	* WASHER, Flat (Included with Ref. No. 0400)
128	--	1	* SCREW, Flange, Hex head (Included with Ref. No. 0400)
129	--	1	* GRIP, Handle, Chute Rotator (Included with Ref. No. 0400)
130	--	2	* WASHER, Flat (Included with Ref. No. 0400)
131	--	1	* ROD, Chute Rotator (Included with Ref. No. 0400)
132	--	1	* SPLITPIN (Included with Ref. No. 0400)
133	--	1	* RING, Plastic, Mounting plate (Included with Ref. No. 0400)
130	--	1	* WASHER, Flat (Included with Ref. No. 0400)
135	--	6	* BOLT, Square Neck, Cup head (Included with Ref. No. 0400)
136	--	1	* PLATE, Mounting, Chute Rotator (Included with Ref. No. 0400)
0560	707831	1	KIT-CHUTE ASSEMBLY, BLACK, NA (Incl. Ref. No. 144, 145, 146, 147, 148, 149, 150, 151, 152, 34, 154, 155, 153 & 62)

### Footnotes

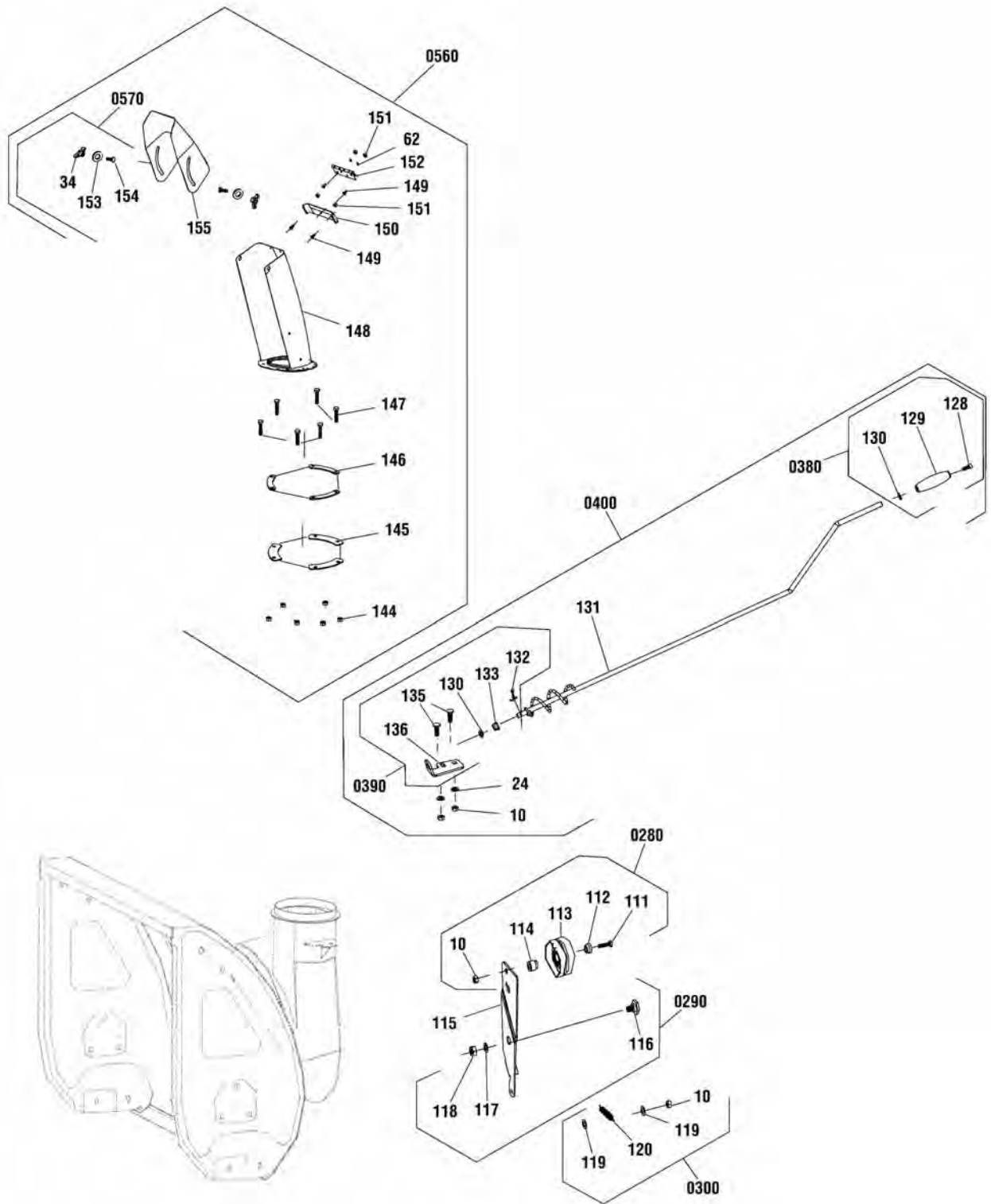
Note:\* Not a serviceable part.

The above parts group applies to the following Mfg. Nos.:

1696610-01 - 1024LD

## Discharge Chute Group

NOTE: Unless noted otherwise,  
use the standard hardware torque  
specification chart.



The above parts group applies to the following Mfg. Nos.:  
1696610-01 - 1024LD

## Discharge Chute Group

REF NO	PART NO.	QTY.	DESCRIPTION
146	--	3	* GASKET, Chute Installing (Included with Ref. No. 0560)
147	--	6	* SCREW, Hex head (Included with Ref. No. 0560)
148	--	1	* WELDMENT, Lower, Chute (Included with Ref. No. 0560)
149	--	4	* BOLT, Phillips head (Included with Ref. No. 0560)
150	--	1	* PAD, Rubber, Chute (Included with Ref. No. 0560)
151	--	4	* NUT, Lock, Hex Head, non-metal (Included with Ref. No. 0560)
152	--	1	* HINGE, Chute (Included with Ref. No. 0560)
34	--	2	* KNOB (Included with Ref. No. 0560)
154	--	2	* BOLT, Square Neck, Cup head (Included with Ref. No. 0560)
155	--	1	* DEFLECTOR (Included with Ref. No. 0560)
153	--	2	* WASHER, Flat (Included with Ref. No. 0560)
62	--	2	* WASHER (Included with Ref. No. 0560)
0570	707759	1	KIT-WING KNOB, CHUTE (Incl. Ref. No. 34, 154 & 153)
34	--	2	* KNOB, Deflector (Included with Ref. No. 0570)
154	--	2	* BOLT, Square Neck, Cup head (Included with Ref. No. 0570)
153	--	2	* WASHER, Flat (Included with Ref. No. 0570)

Not for  
Reproduction

### Footnotes

Note:\* Not a serviceable part.

---

The above parts group applies to the following Mfg. Nos.:

1696610-01 - 1024LD

Not for  
Reproduction

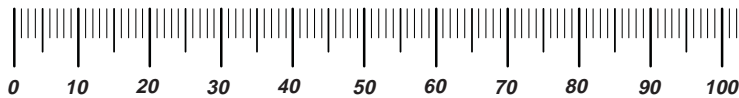
Not for  
Reproduction

Not for  
Reproduction

# Hardware Identification & Torque Specifications

Torque Specification Chart								
FOR STANDARD METRIC MACHINE HARDWARE (Tolerance ± 20%)								
Property Class	5.6		8.8		10.9		12.9	
	Class 5.6		Class 8.8		Class 10.9		Class 12.9	
Size Of Hardware	in/lbs		in/lbs		in/lbs		in/lbs	
	ft/lbs	Nm.	ft/lbs	Nm.	ft/lbs	Nm.	ft/lbs	Nm.
M3	5.88	.56	13.44	1.28	19.2	1.80	22.92	2.15
M4	13.44	1.28	30.72	2.90	43.44	4.10	52.56	4.95
M5	26.4	2.50	60.96	5.75	5.97	8.10	7.15	9.7
M6	44.64	4.3	7.3	9.9	10.3	14	12.1	16.5
M7	5.2	7.1	12.1	16.5	16.9	23	19.9	27
M8	7.7	10.5	17.7	24	25	34	29	40
M10	15	21	35	48	50	67	59	81
M12	26	36	61	83	86.2	117	103	140
M14	42	58	101	132	136	185	162	220
M16	64	88	147	200	210	285	250	340
M18	89	121	202	275	287	390	346	470
M20	126	171	290	390	405	550	486	660
M22	169	230	390	530	559	745	656	890
M24	217	295	497	375	708	960	840	1140
M27	320	435	733	995	1032	1400	1239	1680
M30	435	590	995	1350	1401	1900	1681	2280
M33	590	800	1349	1830	1902	2580	2278	3090
M36	759	1030	1740	2360	2441	3310	2935	3980
M39	988	1340	2249	3050	3163	4290	3798	5150

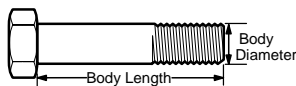
The guides and ruler furnished below are designed to help you select the appropriate hardware.



**Nut, M8**

Thread Diameter (mm)  
Inside Diameter (in)  
Threads per inch

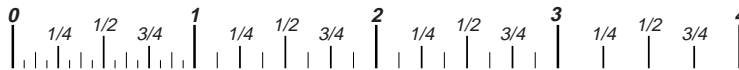
**Nut, 1/2-16**



**Screw, M8- 1.25 x 25**

Thread Diameter (mm)  
Body Diameter  
Distance between threads (mm)  
Threads per inch  
Body Length (mm)  
Body Length (in)

**Screw, 1/2- 16 x 2**



## Standard Hardware Sizing

When a washer or nut is identified as **1/2"** (M8), this is the *Nominal size*, meaning the *inside diameter* is 1/2 inch (8mm metric thread diameter); if a second number is present it represents the *threads per inch* (distance between threads).

When bolt or capscrew is identified as **1/2 - 16 x 2"** (M8 - 1.25 x 50 ), this means the *Nominal size*, or body diameter is 1/2 inch (8mm metric thread diameter), the second number, 16, represents the *threads per inch*, (*1.25 thread diameter*). The final number is the body length of the bolt or screw, 2 inches (50mm).

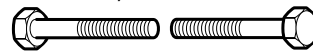
Torque Specification Chart						
FOR STANDARD MACHINE HARDWARE (Tolerance ± 20%)						
Hardware Grade	No Marks		SAE Grade 5		SAE Grade 8	
	SAE Grade 2		SAE Grade 5		SAE Grade 8	
Size Of Hardware	in/lbs		in/lbs		in/lbs	
	ft/lbs	Nm.	ft/lbs	Nm.	ft/lbs	Nm.
8-32	19	2.1	30	3.4	41	4.6
8-36	20	2.3	31	3.5	43	4.9
10-24	27	3.1	43	4.9	60	6.8
10-32	31	3.5	49	5.5	68	7.7
1/4-20	66	7.6	8	10.9	12	16.3
1/4-28	76	8.6	10	13.6	14	19.0
5/16-18	11	15.0	17	23.1	25	34.0
5/16-24	12	16.3	19	25.8	29	34.0
3/8-16	20	27.2	30	40.8	45	61.2
3/8-24	23	31.3	35	47.6	50	68.0
7/16-14	30	40.8	50	68.0	70	95.2
7/16-20	35	47.6	55	74.8	80	108.8
1/2-13	50	68.0	75	102.0	110	149.6
1/2-20	55	74.8	90	122.4	120	163.2
9/16-12	65	88.4	110	149.6	150	204.0
9/16-18	75	102.0	120	163.2	170	231.2
5/8-11	90	122.4	150	204.0	220	299.2
5/8-18	100	136	180	244.8	240	326.4
3/4-10	160	217.6	260	353.6	386	525.0
3/4-16	180	244.8	300	408.0	420	571.2
7/8-9	140	190.4	400	544.0	600	816.0
7/8-14	155	210.8	440	598.4	660	897.6
1-8	220	299.2	580	788.8	900	1,244.0
1-12	240	326.4	640	870.4	1,000	1,360.0

## NOTES

- These torque values are to be used for all hardware excluding: locknuts, self-tapping screws, thread forming screws, sheet metal screws and socket head setscrews.
- Recommended seating torque values for locknuts:
  - for prevailing torque locknuts - use 65% of grade 5 torques.
  - for flange whizlock nuts and screws - use 135% of grade 5 torques.
- Unless otherwise noted on assembly drawings, all torque values must meet this specification.

## Common Hardware Types

Hex Head Capscrew



Washer



Lockwasher

Carriage Bolt



Hex Nut

## Wrench & Fastener Size Guide

1/4" Bolt or Nut Wrench—7/16"	5/16" Bolt or Nut Wrench—1/2"	3/8" Bolt or Nut Wrench—9/16"	7/16" Bolt or Nut Wrench (Bolt)—5/8" Wrench (Nut)—11/16"	1/2" Bolt or Nut Wrench—3/4"
M6 Bolt or Nut Wrench—10mm	M8 Bolt or Nut Wrench—13mm	M10 Bolt or Nut Wrench—17mm	M12 Bolt or Nut Wrench—19mm	M14 Bolt or Nut Wrench—22mm



Not for  
Reproduction

**IT IS THE POLICY OF BRIGGS & STRATTON CORP. TO IMPROVE ITS PRODUCTS  
WHENEVER IT IS POSSIBLE AND PRACTICAL TO DO SO. WE RESERVE THE RIGHT TO  
MAKE CHANGES OR ADD IMPROVEMENTS AT ANY TIME WITHOUT INCURRING ANY  
OBLIGATION TO MAKE SUCH CHANGES ON PRODUCTS.**

**Briggs & Stratton Power Products Group**

---

12301 W. Wirth Street  
Wauwatosa, WI, 53222 USA

[www.BRIGGSandSTRATTON.com](http://www.BRIGGSandSTRATTON.com)

© Copyright 2016 by Briggs & Stratton Corporation  
Milwaukee, WI, USA. All rights reserved