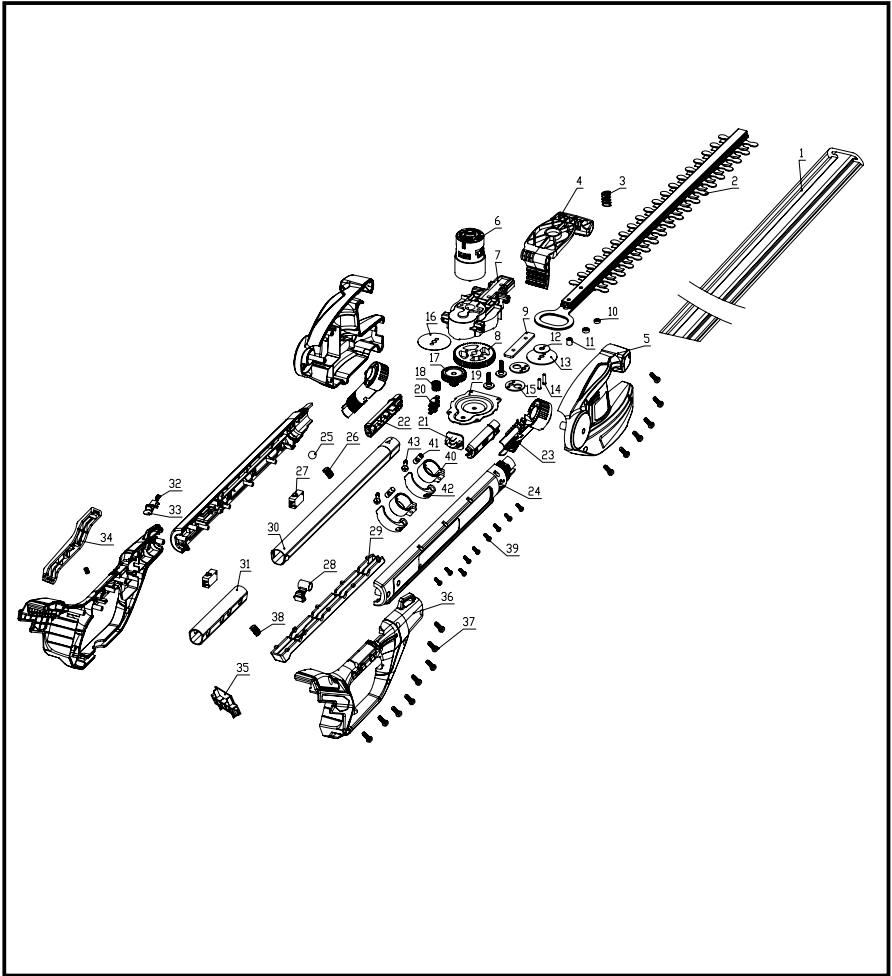


EXPLODED VIEW



PARTS LIST

ITEM NO.	PART NO.	DESCRIPTION	QTY
1	34108648	blade cover	1
2	33101652-1	blade assy.	1
3	33901648	spring	1
4	34105648	rotating handle	1
5	31101648	motor housing assy.	1
6	36101459-1	motor	1
7	34111459-1	gear box	1
8	33200451	gear	1
9	33307453	pressing board	1
10	33202453	shaft cover2	1
11	33902459	shaft cover3	1
12	33302453	small washer	1
13	33301453	big washer	1
14	33203161	pin	2
15	33304453-1	eccentric block	2
16	33305453	spacing block	1
17	33201451-1	dual gear	1
18	33202451	pinion	1
19	33303453	gear box cover	1
20	33314470	female insert	3
21	34106646	male plug	1
22	34107646/34108646	L/R female insert	1
23	31102648	rotating assy.	1
24	34102646/34103646	L/R assistant handle	1
25	33201648	steel ball	1
26	33902648	spring	1
27	36301454-1	switch	2
28	34105646	eccentric knob	1
29	34104646	switch trigger	1
30	33102646	glide tube	1
31	33101646	connection tube	1
32	3340287	spring	2
33	34113505-1	anti-lock off button	1
34	34121708	switch button	1
35	34104978	motor housing insert board	1
36	31103648	handle assy.	1
37	32201517	nut	26
38	33201646	trigonal spring	1
39	32201715	screw	9
40	33302505	clamp tube	2
41	33203334	fixing shaft	2
42	33104505	wrench	2
43	33202648	bolt	2



TOLL-FREE HELPLINE: 1-888-90WORKS (888.909.6757)

Rev: 00 (01-17-14)



Printed in China on 100% Recycled Paper