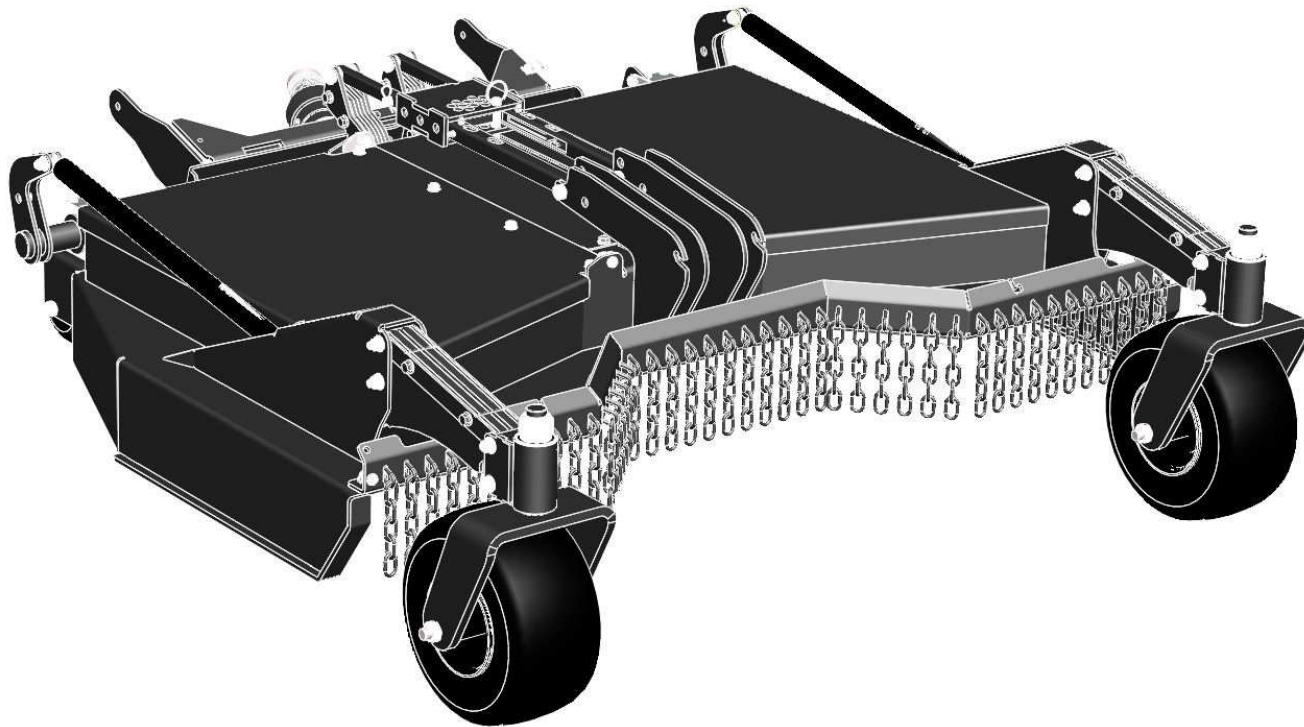


# SWISHER®



## *Illustrated Parts Manual*

STARTING SERIAL # L118-305001

**Model #: ZTR51RC**

**Description: 51" Rough Cut Attachment**

21408 REV 18-305

**SWISHER ACQUISITION INC.**

1602 Corporate Drive, Warrensburg Missouri 64093

Phone: 660-747-8183 FAX: 660-747-8650 Toll Free: 1-800-222-8183

Manufacturing quality lawn care equipment since 1945, Celebrating over 70 years of innovation



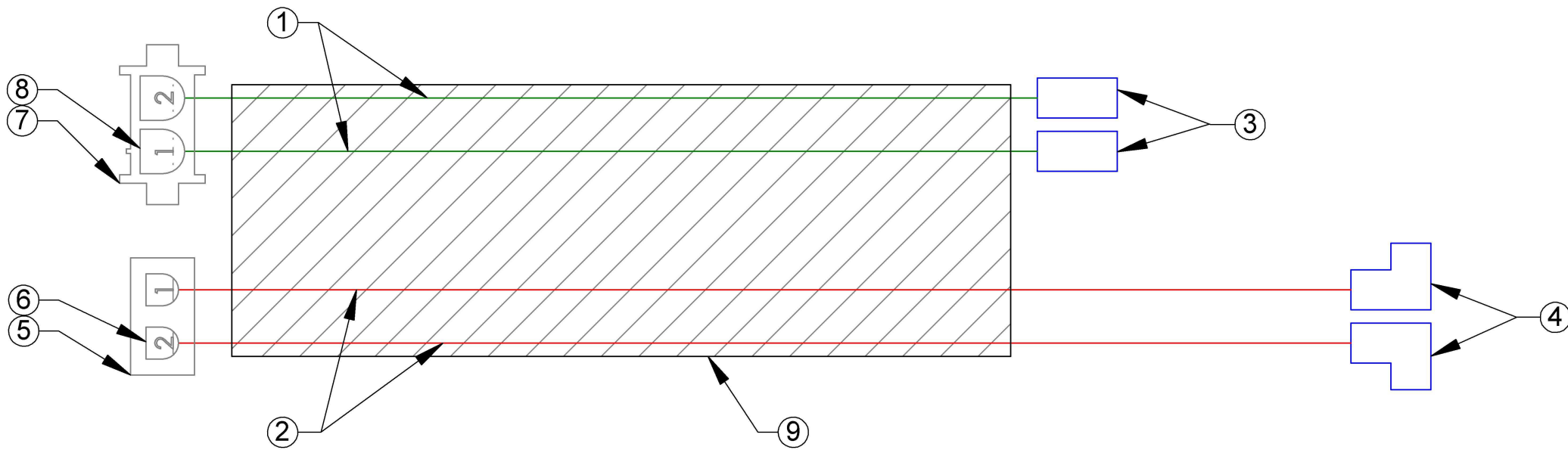
# Table of Contents

Electrical Schematic	3
Belt Drive Covers	4
PTO Shaft & Gauge Wheels	5
PTO Gearbox, Pulley and Adaptor	6
Chain Debris Guard	7
Radial Arms and Wheels	8
Radial Arms and Wheels Parts List	9
Deck Height Adjustment Components	10
Rocker Shaft Assembly	11
Idler Detail - Left Side	12
Idler Detail - Center, Right Side	13
Cutting Blades, Housing Assembly	14
Deck Height Limit Switch	15
Belts & Belt Routing	16

# Electrical Schematic

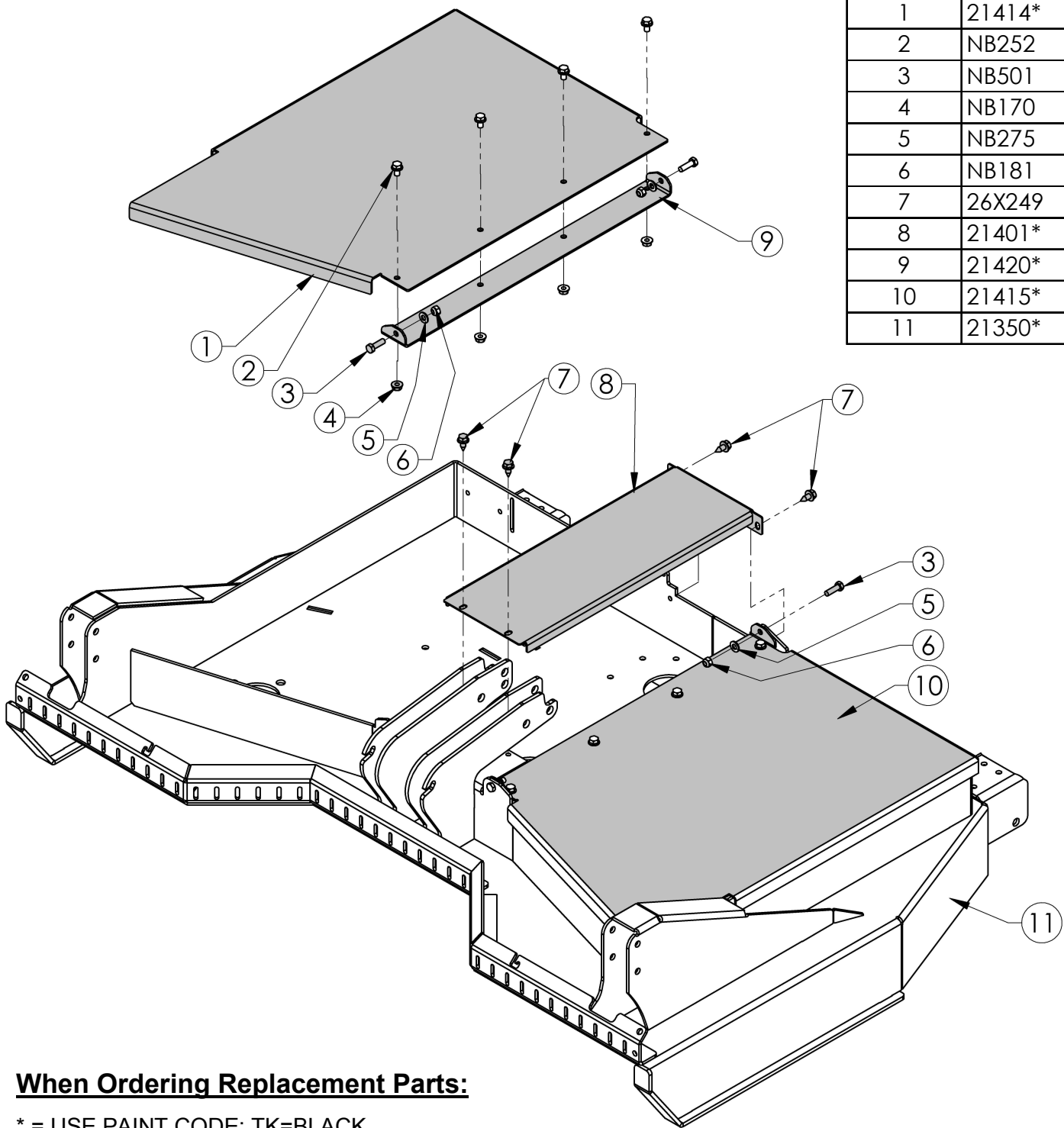
## 20333 - Wire Harness - Front Mount Deck

ITEM NO.	MFG. PART NO.	DESCRIPTION	QTY.
1	N/A	Green, 16 AWG	2 @ 36"
2	N/A	Red, 16 AWG	2 @ 38"
3	19002-0028	MOLEX 3/16" Female, Straight	2
4	19006-0015	MOLEX 3/16" Female, 90° Flag	2
5	50-84-1020	MOLEX 2-Pin Plug; Male	1
6	02-08-2004	Male Pin Terminal,	2
7	50-84-2020	MOLEX 2-Pin Plug; Female	1
8	02-08-1002	Female Pin Terminal	2
9	N/A	Ø3/8" Conduit, Split; Black	1 @ 35"



# Belt Drive Covers

ITEM NO.	PART NUMBER	DESCRIPTION
1	21414*	Cover - Belt, Right
2	NB252	Bolt - Serr Flange, 5/16-18 X 1/2 ZY Gr5
3	NB501	Bolt - 5/16-18 X 1 HCC GR5 ZY
4	NB170	Nut - Serr Flange 5/16-18 ZY
5	NB275	Washer - SAE Flat 5/16 ZY
6	NB181	Nut - Nyloc 5/16-18 ZY
7	26X249	Screw - .312-18 X .75
8	21401*	Cover - Center Deck
9	21420*	Hinge - Belt Cover
10	21415*	Cover - Belt, Left
11	21350*	Deck Weldment

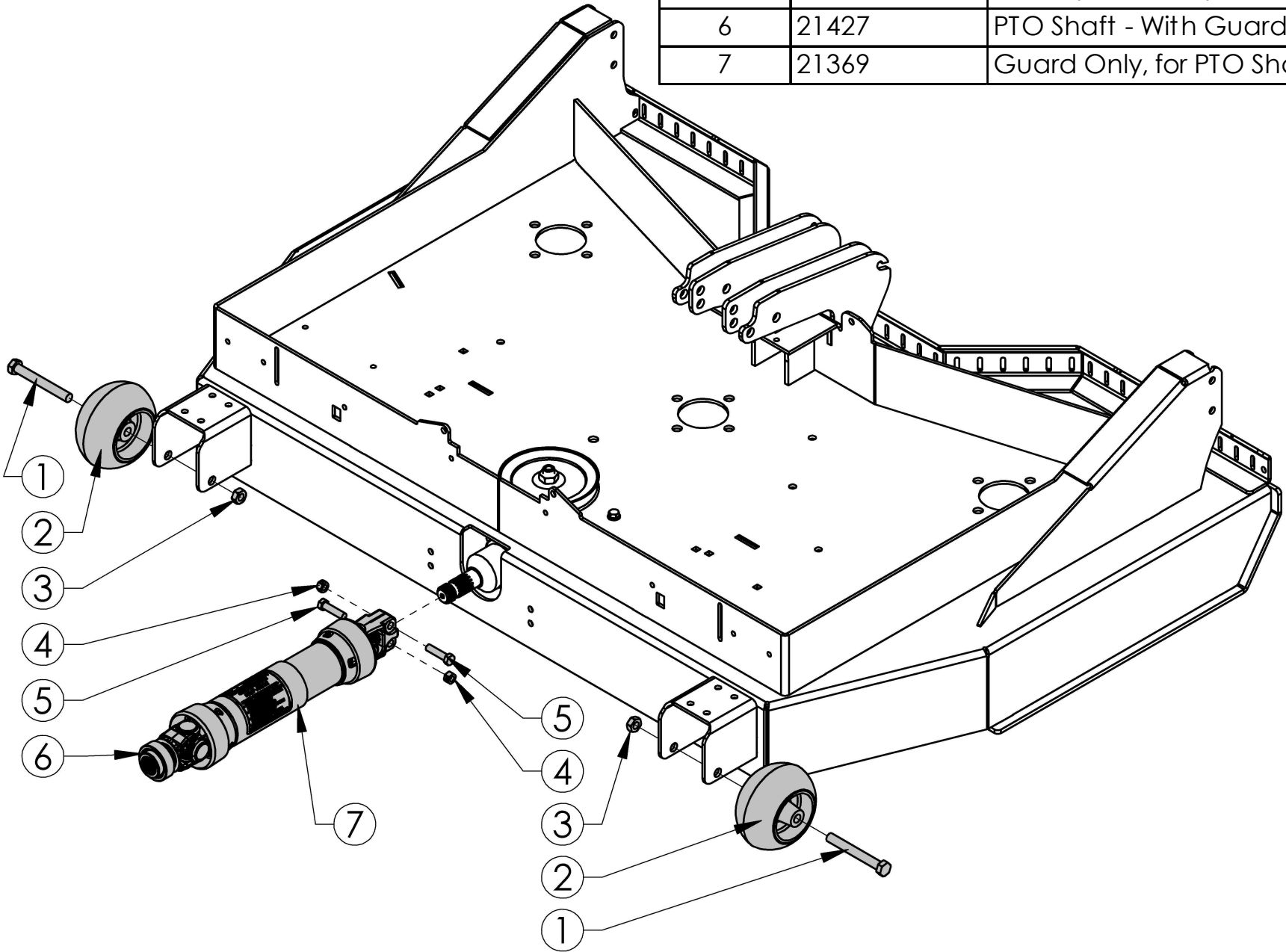


**When Ordering Replacement Parts:**

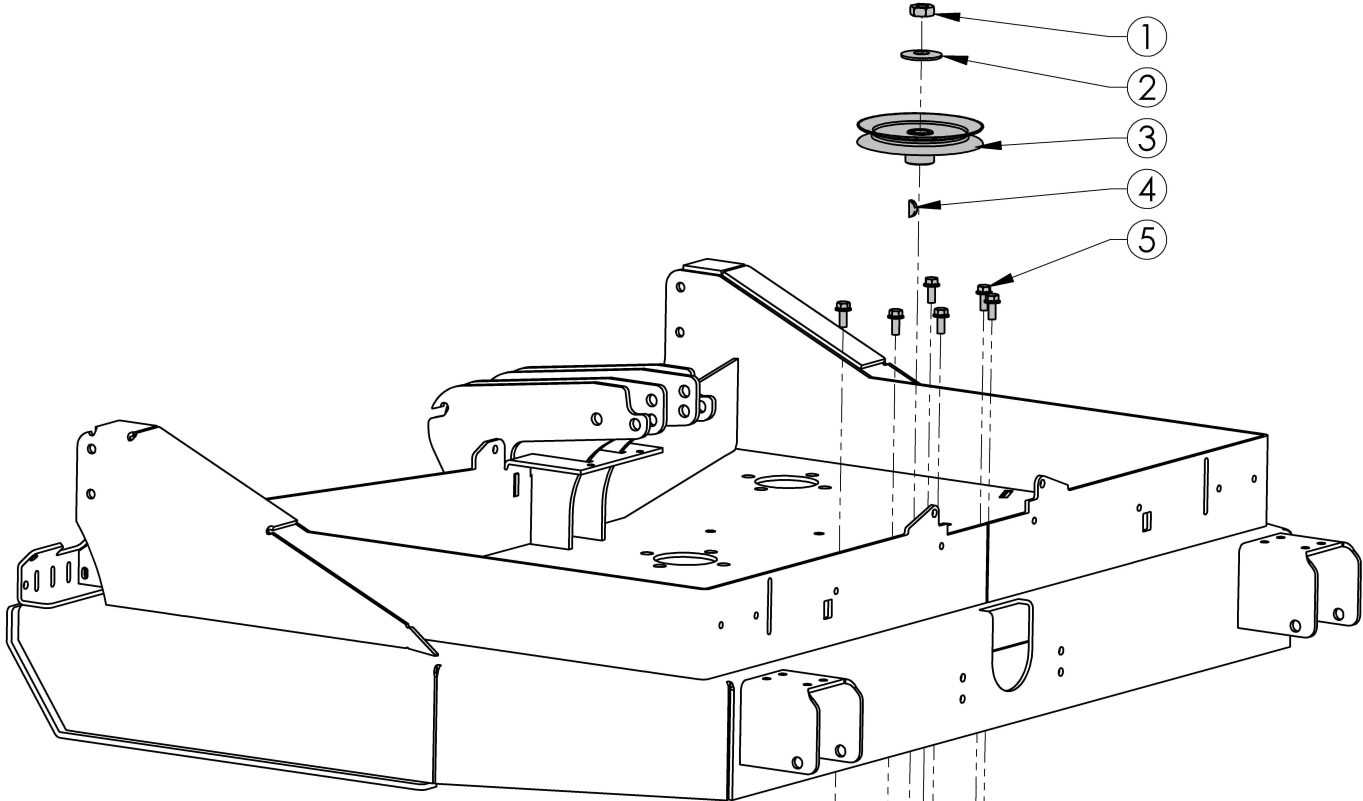
\* = USE PAINT CODE: TK=BLACK

# PTO Shaft & Gauge Wheels

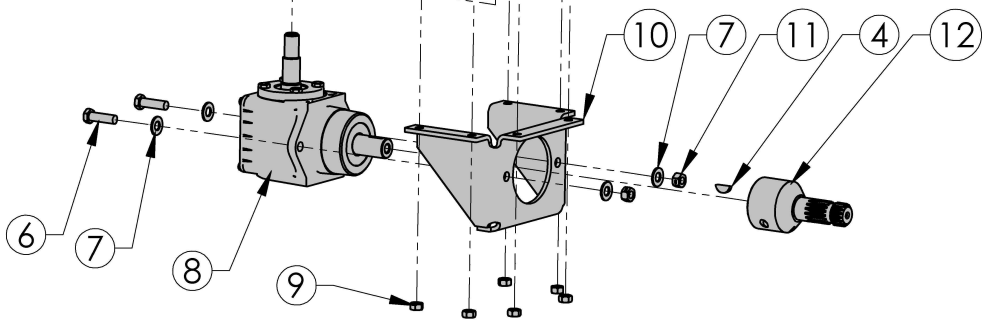
ITEM NO.	PART NUMBER	DESCRIPTION
1	NB132	Bolt - 1/2-13 x 4 HCC GR5 ZY
2	3511	Gauge Wheel
3	NB121	1/2-13 2-Way Jam Lock Nut
4	NB280	Nut - 2 Way Lock 3/8-16
5	NB107	Bolt - 3/8-16 X 1 1/2 HCCG
6	21427	PTO Shaft - With Guard
7	21369	Guard Only, for PTO Shaft



# Gearbox, PTO Adaptor, Pulley & Parts List

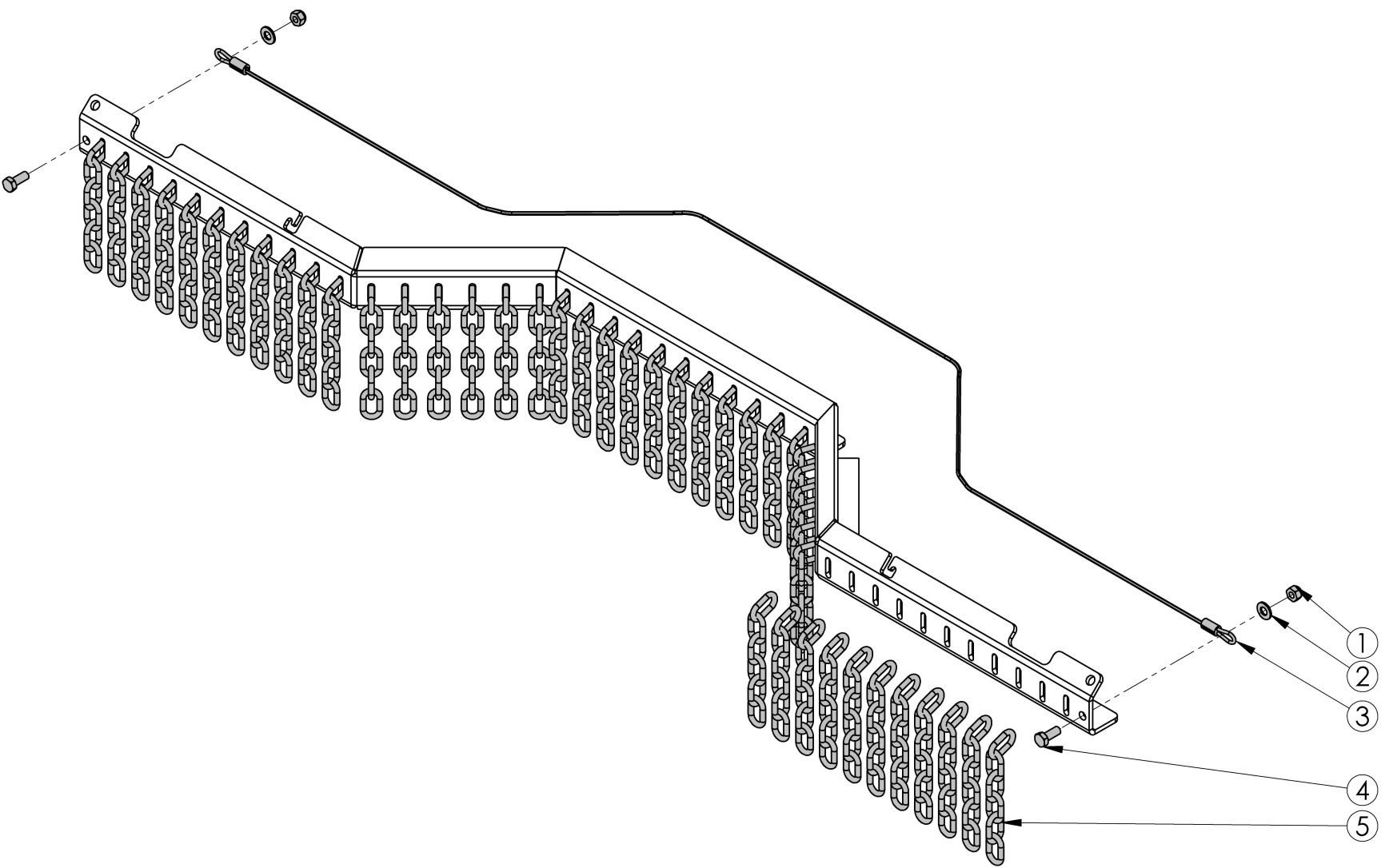


ITEM NO.	PART NUMBER	DESCRIPTION
1	19370	Nut - Hex Jam, 5/8-18 ZY
2	19814	Washer - Belleville 5/8 X 13/4 X .098
3	19283	Pulley - Deck Drive, 5.5"
4	NB638	Key - Woodruff, 3/16 X 3/4 #9
5	NB596	Bolt - Serr Flange, 5/16-18 X 3/4 Gr 5
6	NB618	Bolt - 3/8-16 X 1 1/4 GR5 ZY
7	NB272	Washer - SAE Flat 3/8
8	19329	Gearbox - 90°-1:1
9	NB558	Nut - 2 Way Lock 5/16-18
10	19286	Bracket - Gearbox Mount
11	NB280	Nut - 2 Way Lock 3/8-16
12	19337	Adapter - Ø7/8 to Ø1-15 Spline

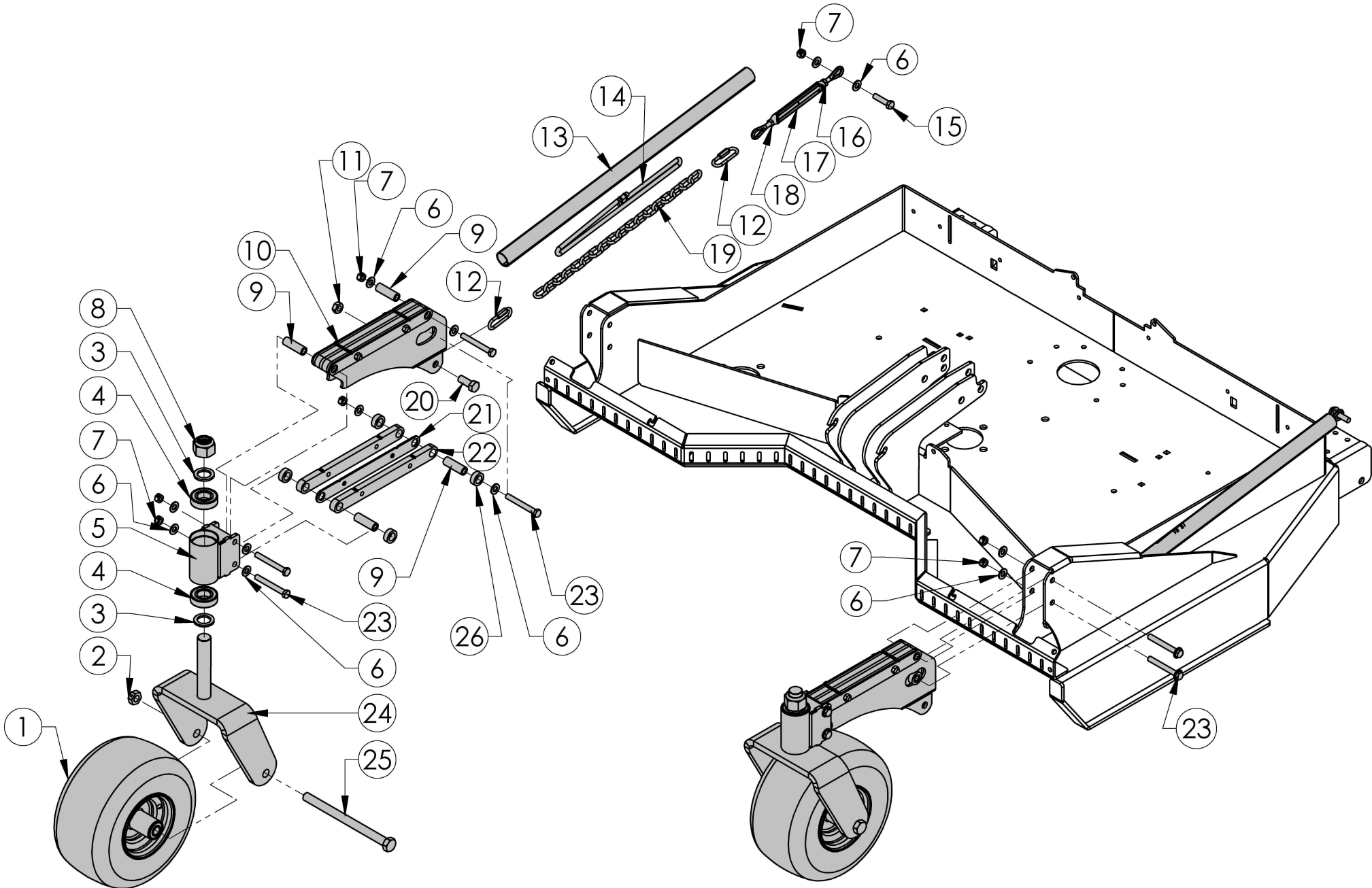


# Chain Debris Guard Detail & Parts List

ITEM NO.	PART NUMBER	DESCRIPTION
1	NB181	Nut - Nyloc 5/16-18 ZY
2	NB275	Washer - SAE Flat 5/16 ZY
3	21404	Cable - 7X7, Ø1/8 X 57
4	NB143	Bolt - 5/16-18 X 3/4 HCC GR2 ZP
5	18722	Chain - Debris Guard, Six Links



# Radial Arms and Wheels Detail





## Radial Arms and Wheels Parts List

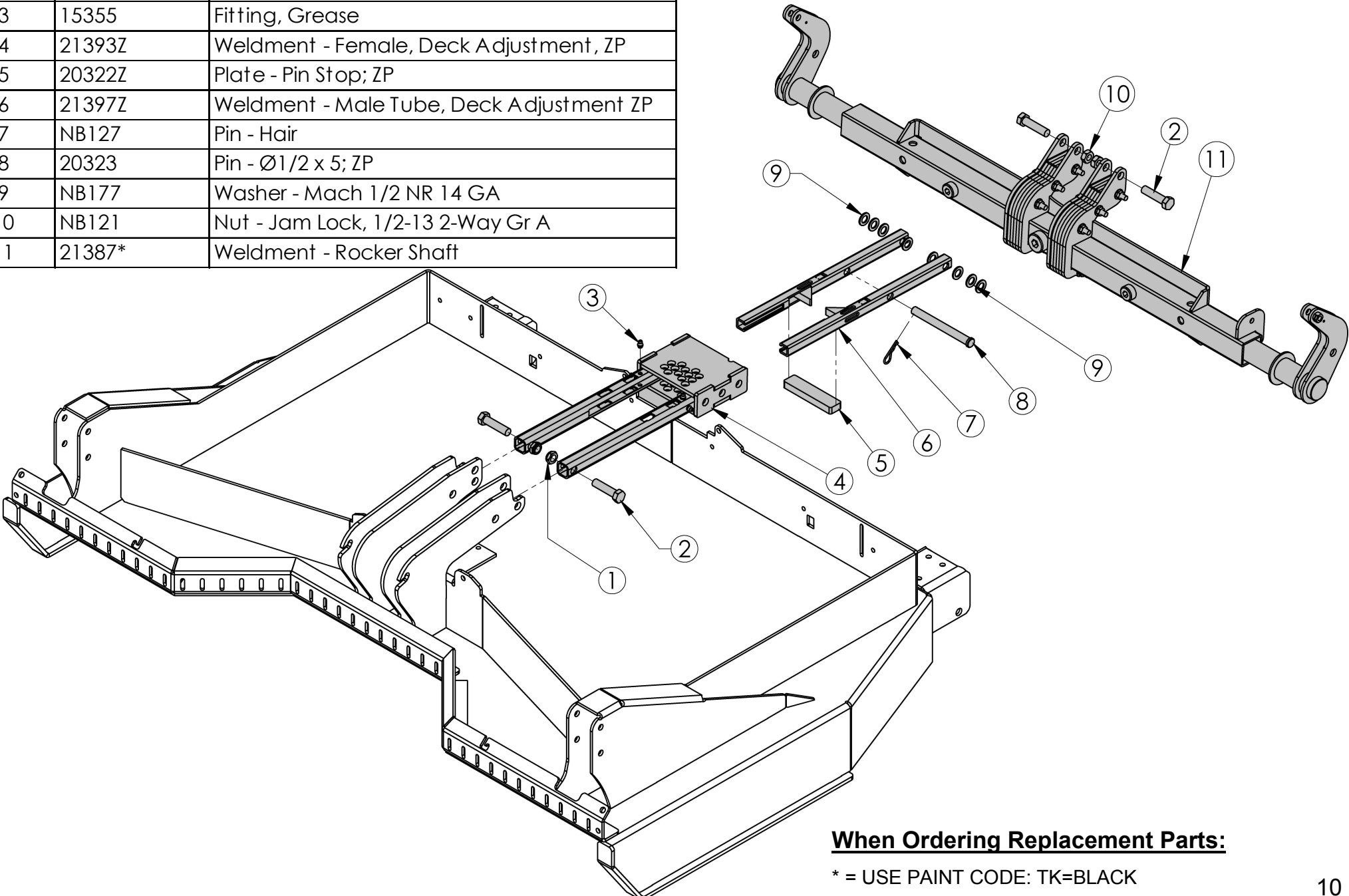
ITEM NO.	PART NUMBER	DESCRIPTION
1	19290	Tire/Wheel - 11 X 6.00-5, Smooth
2	NB595	Nut - Lock Jam, 5/8-11 2 Way
3	NB614HT	Washer - 1 X 1 1/2 10GA
4	4845	Bearing - 1"ID X 2"OD
5	19261*	Weldment - Housing, Front Caster
6	NB272	Washer - SAE Flat 3/8 ZY
7	NB280	Nut - 2 Way Lock 3/8-16 ZY
8	NB612	Nut - Nyloc 1"-8 ZY
9	19282	Bushing - Front Radius Arm
10	19720*	Assembly - Top Radius Arm
11	NB121	Nut - Jam Lock, 1/2-13 2-Way
12	NB781	Connector - Chain, 3/16"
13	19425	Cover - Fabric Chain Wrap
14	19452	Bungee - Ø5 1/2" Ring, Ø5/16 Cord
15	NB107	Bolt - 3/8-16 X 1 1/2 HCC GR5 ZY
16	NB173	Nut - Jam 5/16-18 ZY
17	19372	Turnbuckle - 5/16-18, RHT & LHT
18	19432	Nut - Jam, 5/16-18, LHT; ZY
19	21400	Chain - 18 Links
20	NB647	Bolt - 1/2-13 X 1 1/4 HTC GR5 ZY
21	19708*	Plate - Radius Arm, 1/8"
22	19710*	Plate - Radius Arm, 1/2"
23	NB150	Bolt - 3/8-16 X 3 HCC GR5 ZY
24	19332*	Weldment - Caster, HD; Front Mount
25	18953	Bolt - 5/8-11 X 8 1/2, GR8; ZY
26	19711	Spacer - 5/8" ID x 1" OD x 3/8"

### **When Ordering Replacement Parts:**

\* = USE PAINT CODE: TK=BLACK

# Deck Height Adjustment Components & Parts List

ITEM NO.	PART NUMBER	DESCRIPTION
1	NB688	Nut - Nyloc Jam, 1/2-13 ZY
2	NB509	Bolt - 1/2-13 X 2 HCC GR5 ZY
3	15355	Fitting, Grease
4	21393Z	Weldment - Female, Deck Adjustment, ZP
5	20322Z	Plate - Pin Stop; ZP
6	21397Z	Weldment - Male Tube, Deck Adjustment ZP
7	NB127	Pin - Hair
8	20323	Pin - Ø1/2 x 5; ZP
9	NB177	Washer - Mach 1/2 NR 14 GA
10	NB121	Nut - Jam Lock, 1/2-13 2-Way Gr A
11	21387*	Weldment - Rocker Shaft

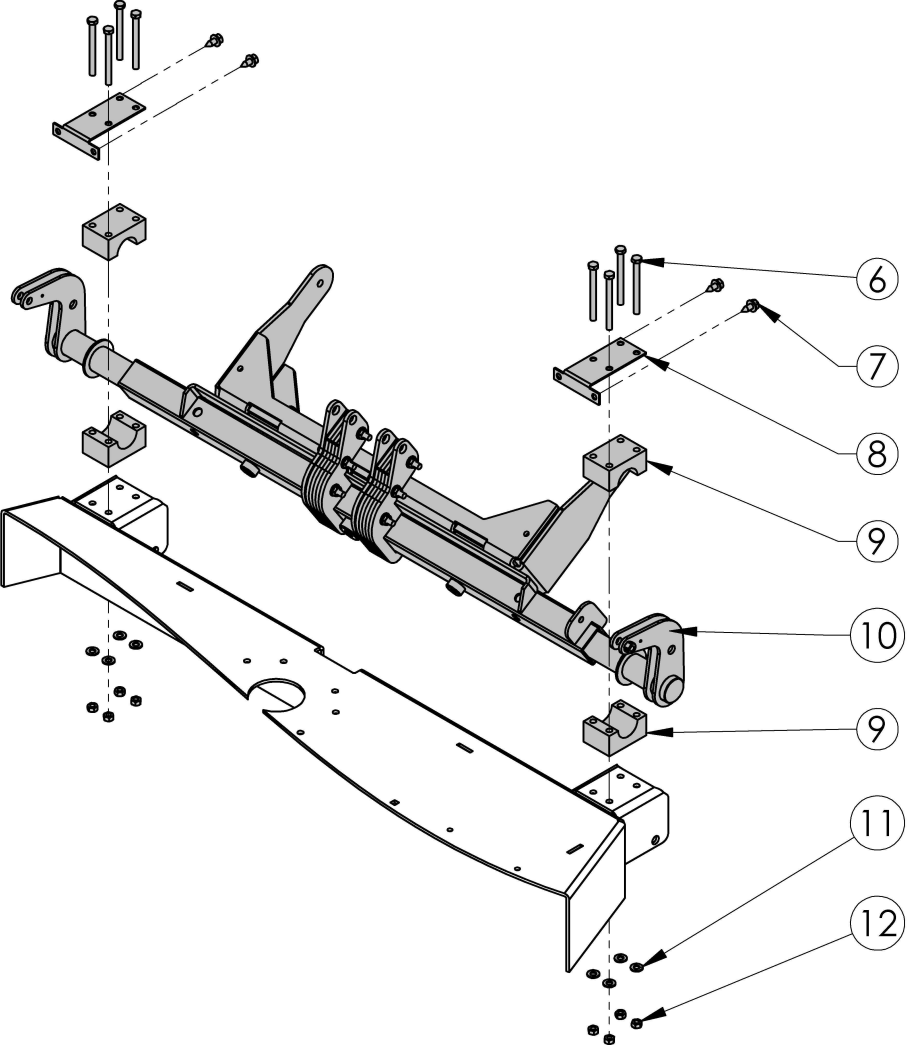
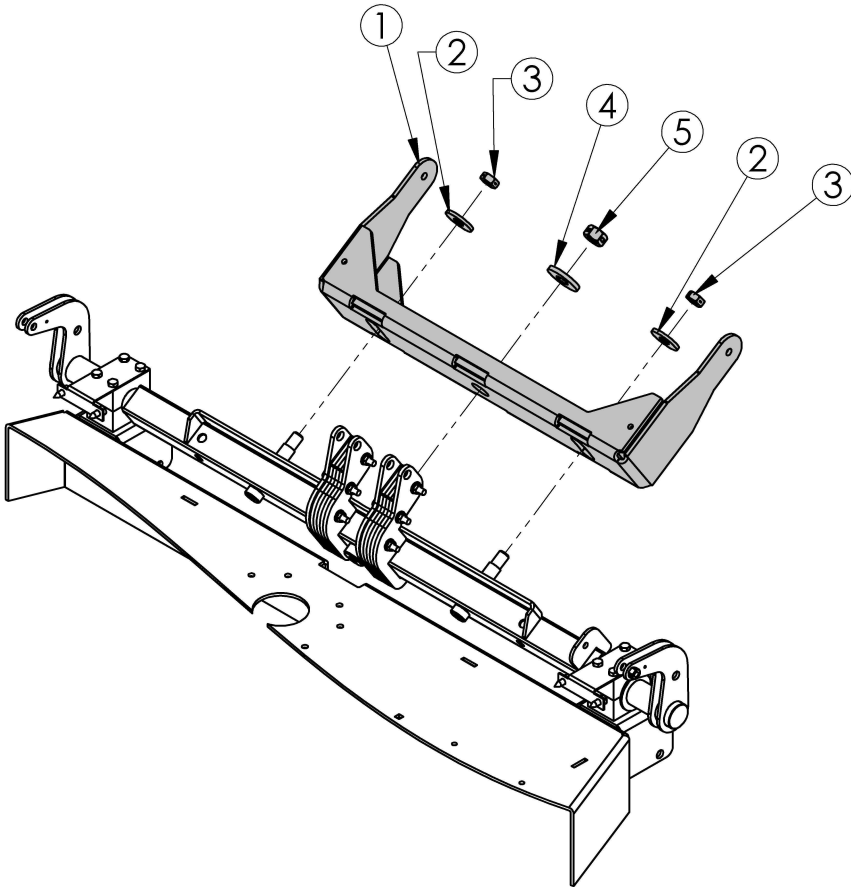


**When Ordering Replacement Parts:**

\* = USE PAINT CODE: TK=BLACK

# Rocker Shaft Assembly & Parts List

ITEM NO.	PART NUMBER	DESCRIPTION	ITEM NO.	PART NUMBER	DESCRIPTION
1	19269*	Weldment - Quick Disconnect Deck	7	26X249	Screw - .312-18 X .75
2	19371	Washer - Ø5/8" X 3/16"; ZP	8	19316*	Plate - Pillow Block Cover
3	NB595	Nut - Lock Jam, 5/8-11 2 Way	9	19254	Pillow Block - Half, UHMW
4	19734Z	Washer - 3/4"ID X 2"OD X 1/4"; ZP	10	21387*	Weldment - Rocker Shaft
5	13997	Nut - 3/4-10; 2 Way Locking	11	NB275	Washer - SAE Flat 5/16 ZY
6	19692	Bolt - Hex, 5/16-18 x 3 1/2; ZP	12	NB558	Nut - Lock, 5/16-18 ZY 2 Way

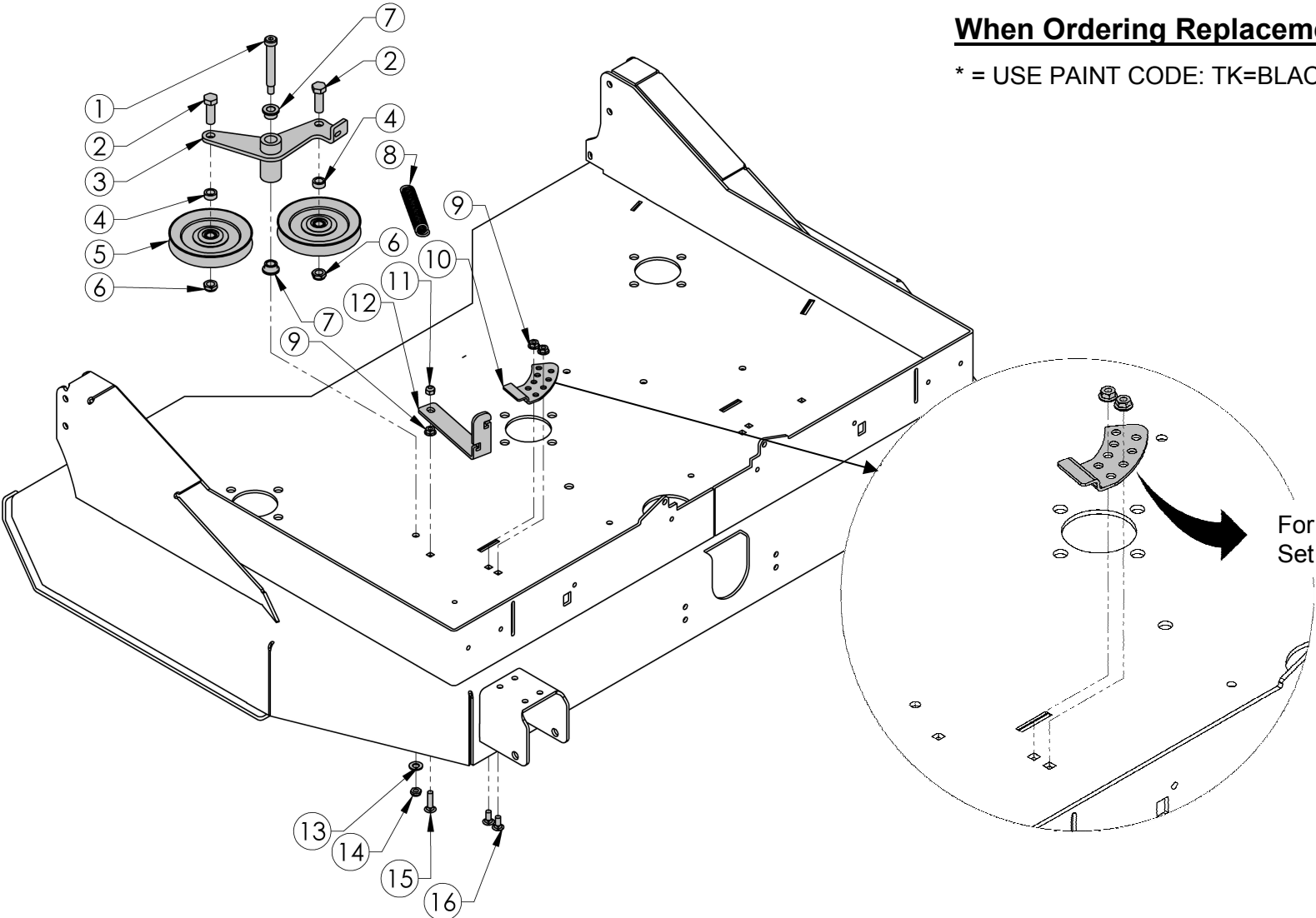


**When Ordering Replacement Parts:**

\* = USE PAINT CODE: TK=BLACK

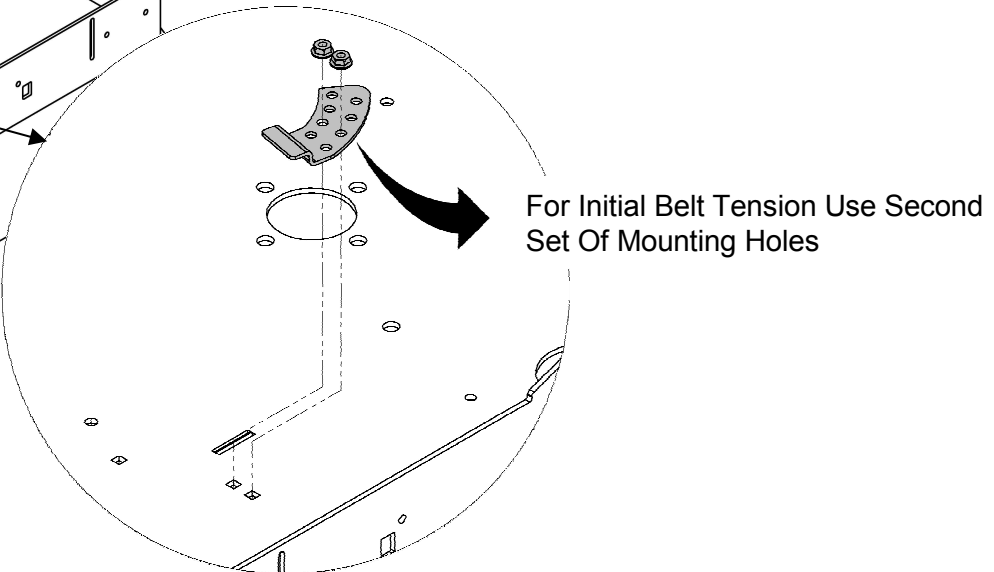
# Idler Detail - Left Side & Parts List

ITEM NO.	PART NUMBER	DESCRIPTION	ITEM NO.	PART NUMBER	DESCRIPTION
1	19336	Bolt - Shoulder 1/2 X 3" X 3/8-16	9	NB170	Nut - Serr Flange 5/16-18 ZY
2	10046	Bolt - 1/2-13 X 1 1/2 HCC GR5 ZY	10	21386*	Lock - Belt Tensioner, Left
3	21378*	Weldment - Idler, FM RC	11	NB181	Nut - Nyloc 5/16-18 ZY
4	7841Z	Bushing	12	21381*	Lever - Idler
5	21377	Pulley - V-Idler, B-Belt 1/2" ID X 5" OD	13	19826	Washer - SAE Flat 3/8 ZP
6	NB688	Nut - Nyloc Jam, 1/2-13 ZY	14	NB207	Nut - Jam, Nyloc 3/8-16 ZY
7	021008	Bearing - OI Lite 1/2"	15	10217	Bolt - Carriage 5/16-18 X 1.25 GR5 ZY
8	21425	Spring - Extension .82ODX5.5-6.5 31 Coil	16	20236	Bolt - Carriage 5/16-18 X .75 GR5 ZP

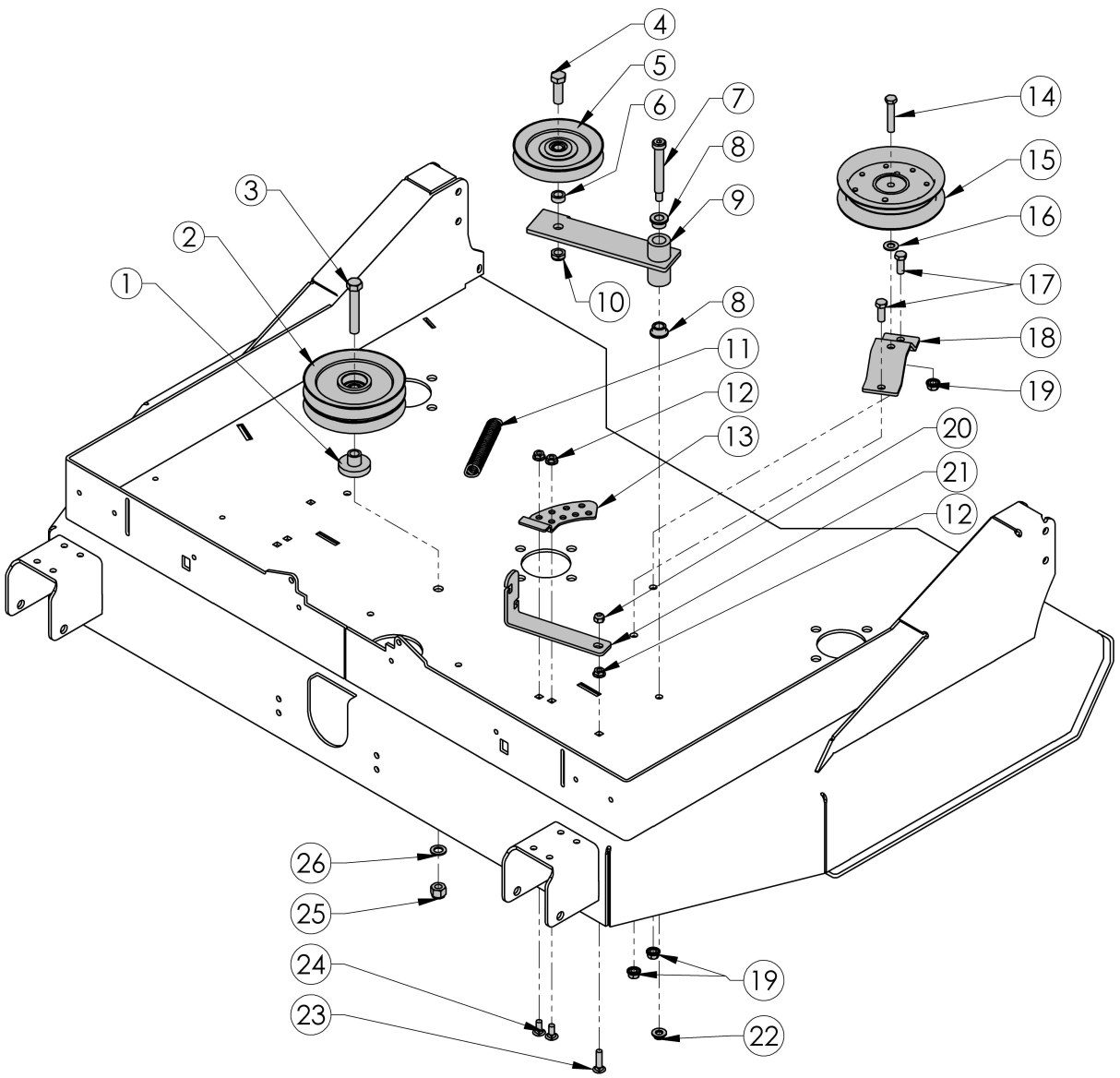


**When Ordering Replacement Parts:**

\* = USE PAINT CODE: TK=BLACK



# Idler Detail - Center, Right Side & Parts List



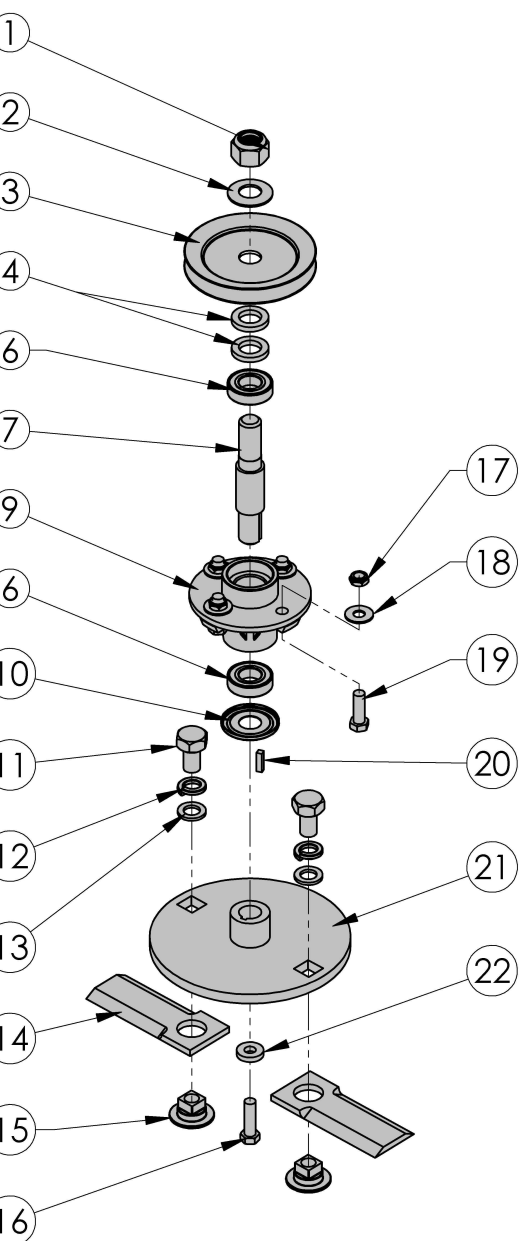
ITEM NO.	PART NUMBER	DESCRIPTION
1	21383Z	Weldment - Pulley Spacer, ZP
2	21382	Pulley - DbI Inside Idler B 1/2IDX5.6OD
3	NB131	Bolt - 1/2-13 X 3 HCC GR5 ZY
4	10046	Bolt - 1/2-13 X 1 1/2 HCC GR5 ZY
5	21377	Pulley - V-Idler, B-Belt 1/2" ID X 5" OD
6	7841Z	Bushing
7	19336	Bolt - Shoulder 1/2 X 3" X 3/8-16
8	021008	Bearing - OI Lite 1/2"
9	21421*	Weldment - Idler Arm
10	NB688	Nut - Nyloc Jam, 1/2-13.7Y
11	21425	Spring - Extension .82ODX5.5-6.5 31 Coil
12	NB170	Nut - Serr Flange 5/16-18.7Y
13	21426*	Lock - Belt Tensioner, Right
14	NB198	Bolt - 3/8-16 X 2 HCC GR5 ZY
15	18607	Pulley - Backside Idler, 5"
16	19826	Washer - SAE Flat 3/8
17	NB604	Bolt - 3/8-16 X 1 GR5 ZY
18	21424*	Mount - Idler
19	19799	Nut - Serr Flange, Hex 3/8-16
20	NB181	Nut - Nyloc 5/16-18.7Y
21	21381*	Lever - Idler
22	NB207	Nut - Jam, Nyloc 3/8-16.7Y
23	10217	Bolt - Carriage 5/16-18 X 1.25 GR5 ZY
24	20236	Bolt - Carriage 5/16-18 X .75 GR5
25	NB281	Nut - Nyloc 1/2-13.7Y
26	NB177	Washer - Mach 1/2 NR 14 GA

**When Ordering Replacement Parts:**

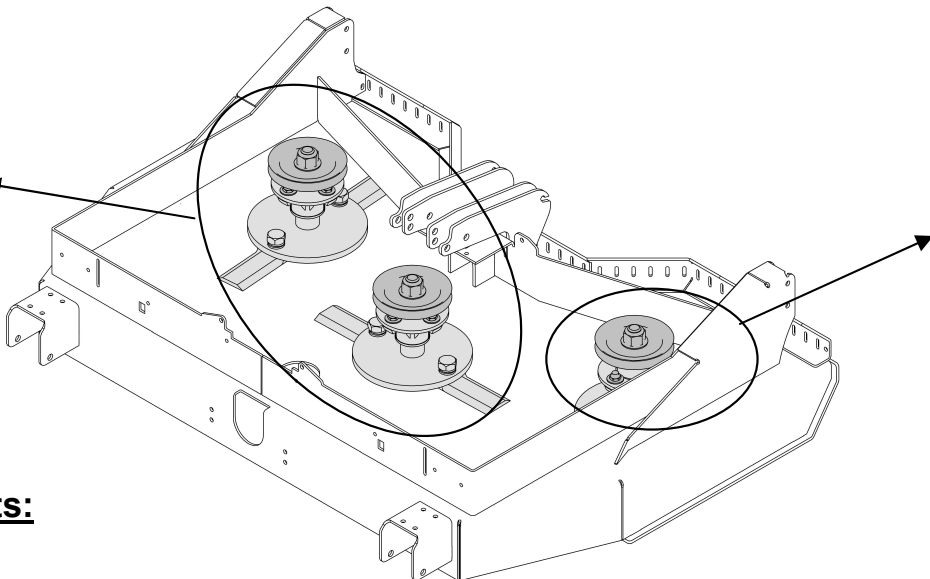
\* = USE PAINT CODE: TK=BLACK

# Cutting Blades, Housing Assembly Detail & Parts List

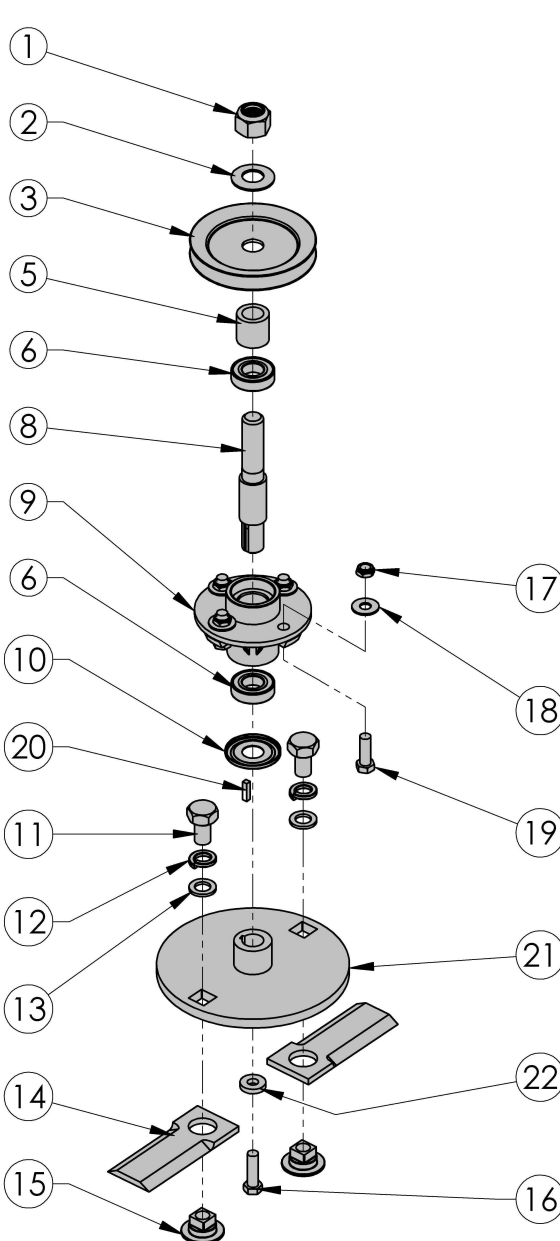
Center and Left Side Assembly



ITEM NO.	PART NUMBER	DESCRIPTION
1	18850	Nut - Nyloc 1"-14, Gr 2
2	NB738	Washer - Bliville, 1"ID X 2"OD X 14GA ZY
3	21370	Pulley - 5.50" B V-Belt
4	21344	Spacer - Pulley, 1.01ID X .312Wall X .25
5	21373Z	Spacer - Pulley 1 IDX1.5 ODX1.436 L ZP
6	4845	Bearing - 1"ID X 2"OD
7	21376	Shaft - RC Blade w/ Keyway, 6.5"
8	21375	Shaft - RC Blade w/ Keyway, 7.4"
9	21371*	Housing - RC Blade, Short
10	21372	Cover - Dust, RC Housing
11	13862	Bolt - 3/4-10 x 1 1/4; GR 8
12	NB672	Washer - Lock, 3/4
13	NB184Z	Washer - 3/4ID X 1 1/4OD 10 GA.
14	21365	Blade - Rough Cut, 5/16" X 6.3"
15	21366	Nut - RC Blade
16	21367	Bolt - 1/2-20 X 1 3/4 GR8 ZY
17	NB688	Nut - Nyloc Jam, 1/2-13 ZY
18	NB555	Washer - USS Flat, 1/2 ZY
19	10046	Bolt - 1/2-13 X 1 1/2 HCC GR5 ZY
20	9031	Key Stock - 1/4 X 1
21	21362*	Weldment - Blade Disc
22	21368Z	Washer - Hub, ZP



Right Side Assembly

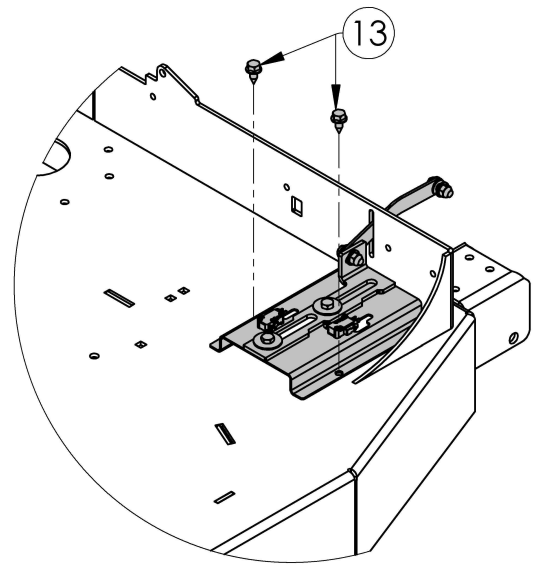
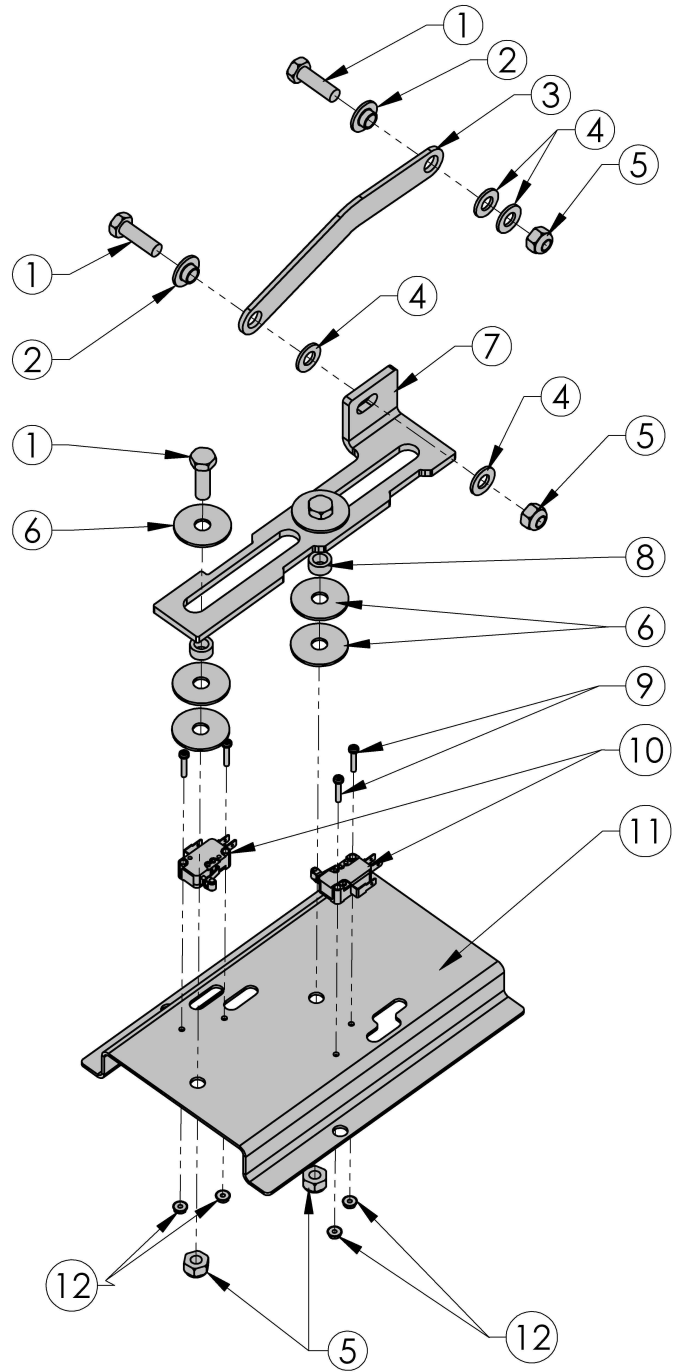


**When Ordering Replacement Parts:**

\* = USE PAINT CODE: TK=BLACK

# Deck Height Limit Switch Assembly Detail & Parts List

ITEM NO.	PART NUMBER	DESCRIPTION
1	NB501	Bolt - 5/16-18 X 1 HCC GR5 ZY
2	18717	Spacer
3	21419*	Arm - Switch
4	NB275	Washer - SAE Flat 5/16 ZY
5	NB181	Nut - Nyloc 5/16-18 ZY
6	NB579	Washer - 5/16 X 1 1/4 OD ZY
7	21417*	Rod - Switch Trigger
8	7839Z	Bushing
9	19601	Screw - 4-40 X 5/8, Pan Head
10	19451	Switch - Micro Lever, NC/NO
11	21418*	Frame - Switch Mount
12	19602	Nut - Kep, 4-40
13	26X249	Screw - .312-18 X .75



**When Ordering Replacement Parts:**

\* = USE PAINT CODE: TK=BLACK

# Belts & Belt Routing Diagram

