



Questions, problems, missing parts? Before returning to store call
Husky Customer Service
8 a.m. - 7 p.m., EST, Monday-Friday
9 a.m. - 6 p.m., Saturday

1-888-HD-HUSKY
HUSKYTOOLS.COM

Retain this manual for future use.



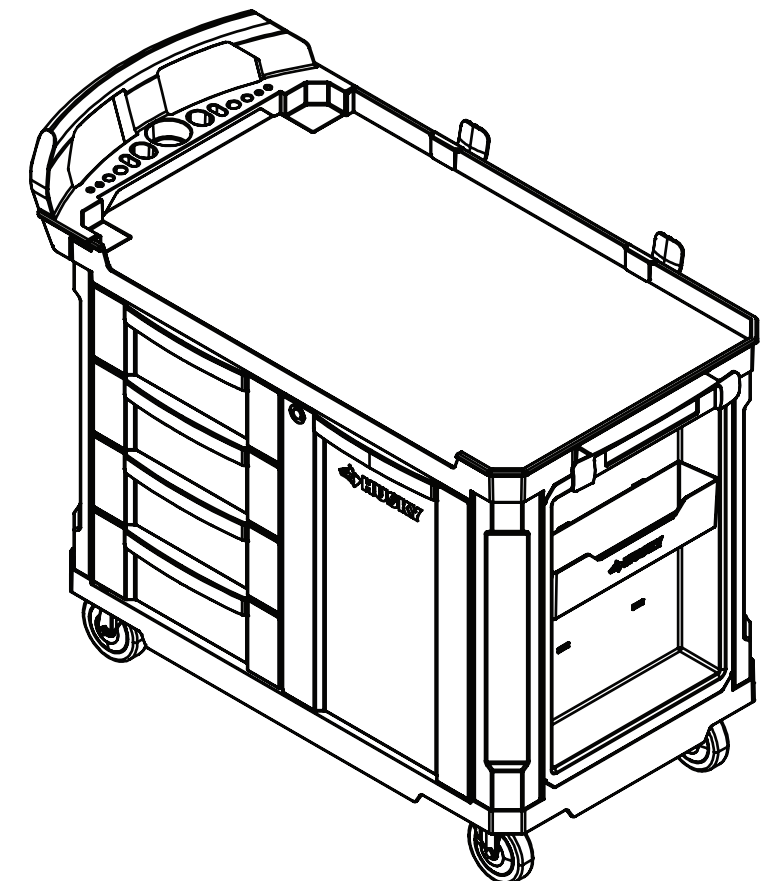
User Guide

Mobile Work Station

Questions, problems, missing parts?
Before returning to the store, call
Husky Customer Service
8 am - 7 pm, EST Monday-Friday
9 am - 6 pm, EST Saturday

1-888-HD-HUSKY

HUSKYTOOLS.COM



Thank you

We appreciate the trust and confidence you have placed in Husky through the purchase of this chest/cabinet. We strive to continually create quality products designed to enhance your home. Visit us online to see our full line of products available for your home improvement needs. Thank you for choosing Husky!

Table of Contents

Table of contents.....	2	Assembly.....	3-5
Safety information.....	2		
Warranty.....	2		
Specifications.....	2		
Package contents.....	3		
Tools for assembly.....	3		

Safety Information

- 1) Read and understand directions before use.
- 2) Use the brakes when this product is not being moved. This prevents unintentional rolling.
- 3) Do not tow this product with power equipment.
- 4) Before locking the cabinet, ensure the door and drawers are completely closed for the lock to work properly.

CAUTION: Do not sit or stand on this product. You may fall which may cause personal injury or product damage.

CAUTION: Be careful when opening more than one drawer. The product may become unstable and tip which may cause personal injury or product damage.

CAUTION: Do not attach or mount this product to a vehicle. This may cause personal injury or product damage.

- 5) Power cord
 - Power cord must be connected to a 125 Volt GFCI outlet with proper ground.
 - Check the insulation and plug of the power cord before use. Do not use if worn or damaged.
 - Do not overload the power supply.
 - Do not connect the power cord to an outlet that also supplies power to critical safety equipment.
- 6) Electrical shock hazard
 - Do not plug the cord into an outlet with wet hands.
 - Do not use this cabinet near a bathtub, shower or swimming pool.
 - Power cord plug must match the outlet.
 - Never modify the plug in any way.
 - Do not use with any adapter plugs.
 - Avoid body contact with earthed or grounded surfaces. There is an increased risk of electrical shock if your body is earthed or grounded.

CAUTION: RISK OF ELECTRICAL SHOCK: This unit has one power supply cord. Make sure the cord is unplugged before any servicing or cleaning.

NOTE: This device complies with part 15 of FCC Rules. Operation is subject to the two following conditions. 1) This device may not cause harmful interference. 2) This device must accept any interference received, including interference that may cause undesired operation.

CAUTION: Keep this product on level surfaces. The product may become unstable and tip if stored or moved on an unlevelled surface which may cause personal injury or product damage.

CAUTION: Lock cabinet before moving. Drawers could come open which may cause personal injury or product damage.

NOTE: For a Class B digital device or peripheral, the instructions furnished to the user shall include the following or similar statement, placed in a prominent location in the text of the manual:
NOTE: This equipment has been tested and found to comply with the limits for a Class B digital device, pursuant to part 15 of the FCC Rules. These limits are designed to provide reasonable protection against harmful interference in a residential installation. This equipment generates, uses and can radiate radio frequency energy and, if not installed and used in accordance with the instructions, may cause harmful interference to radio communications. However, there is no guarantee that interference will not occur in a particular installation. If this equipment does cause harmful interference to radio or television reception, which can be determined by turning the equipment off and on, the user is encouraged to try to correct the interference by one or more of the following measures:
—Reorient or relocate the receiving antenna.
—Increase the separation between the equipment and receiver.
—Connect the equipment into an outlet on a circuit different from that to which the receiver is connected.
—Consult the dealer or an experienced radio/TV technician for help

Warranty

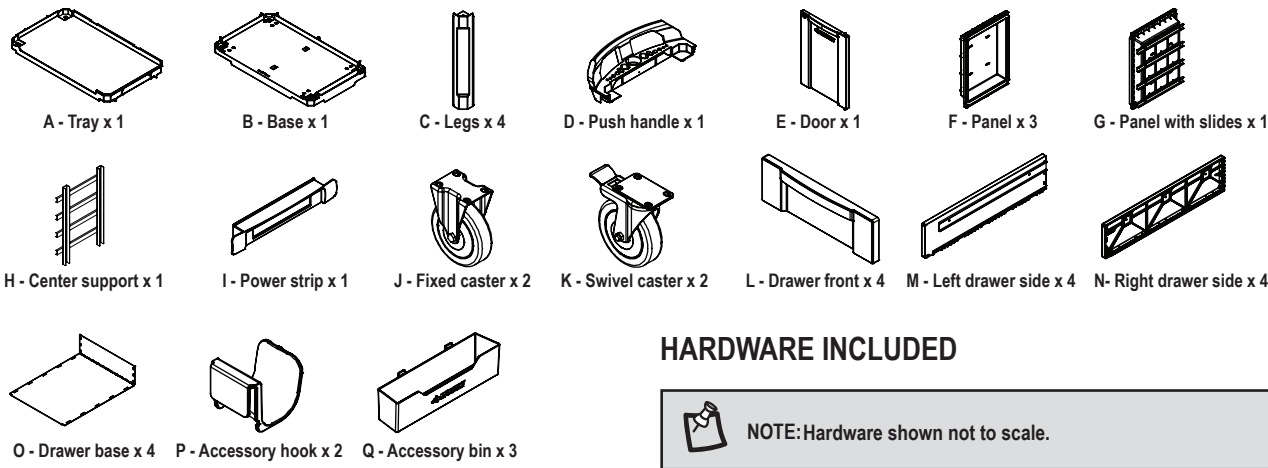
If within two years from date of purchase, this Husky product fails due to a defect in materials or workmanship, return the product to any Home Depot retail store with a receipt indicating proof of purchase for replacement with an item of equal or greater value. This warranty excludes incidental/inconsequential damages and failures due to misuse, abuse or normal wear and tear. This warranty gives you specific rights, and you may also have other rights, which vary from state to state.

Please see store or call 1-888-HD-HUSKY.

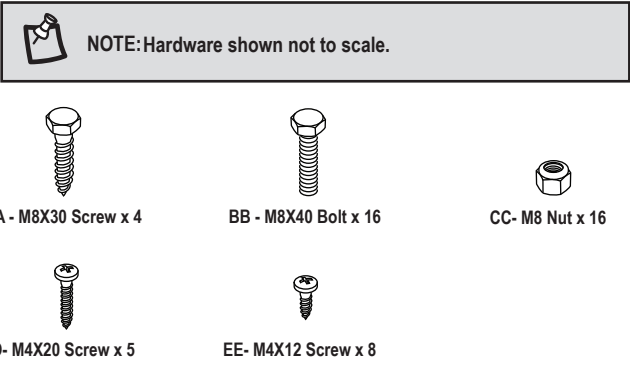
Specifications

Maximum weight (per cabinet drawer)	40lbs
Casters support up to	1000lbs

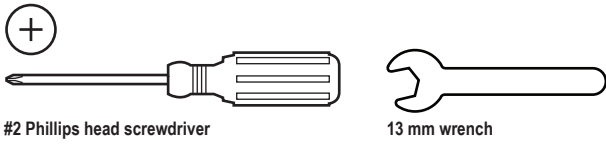
Package Contents



HARDWARE INCLUDED



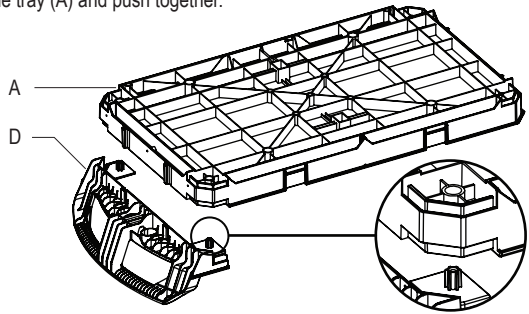
Tools for Assembly (Included)



Assembly

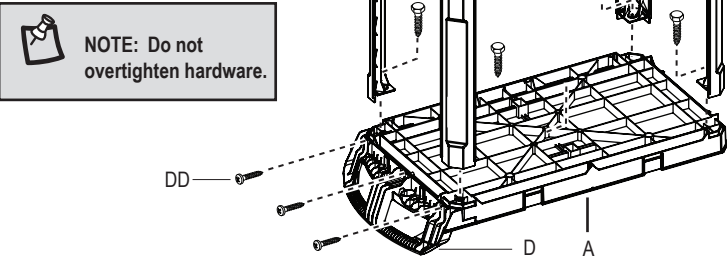
1 Aligning the Handle to the Tray

- Position the handle (D) upside down against the ground.
- Align the engaging features from the handle (D) into the receiving features on the tray (A) and push together.



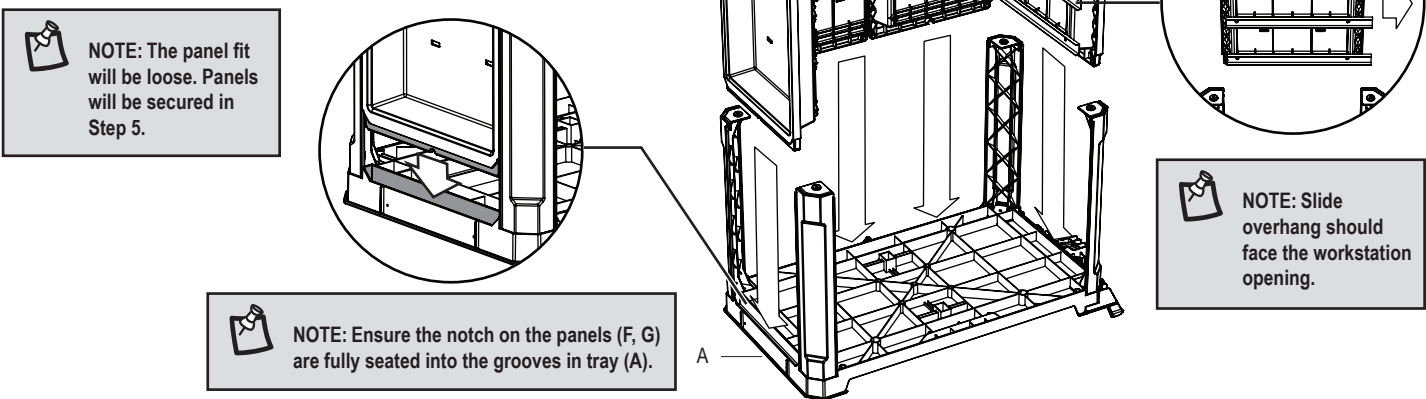
2 Assembling the Handle, Tray, and Legs

- Insert the legs (C) into the tray (A) using four screws (AA).
- Attach the handle (D) to the tray (A) using three screws (DD).



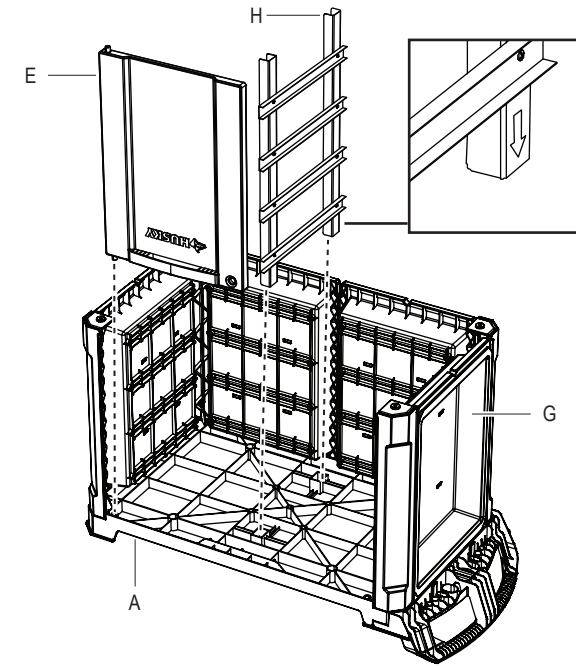
3 Installing the Panels and Center Support

- Insert the panels (F) into the front and side of the assembly.
- Insert the panel with slides (G) into the back of the assembly (below the push handle).



4 Installing the Center Support and the Door

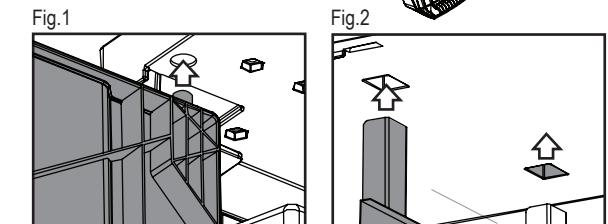
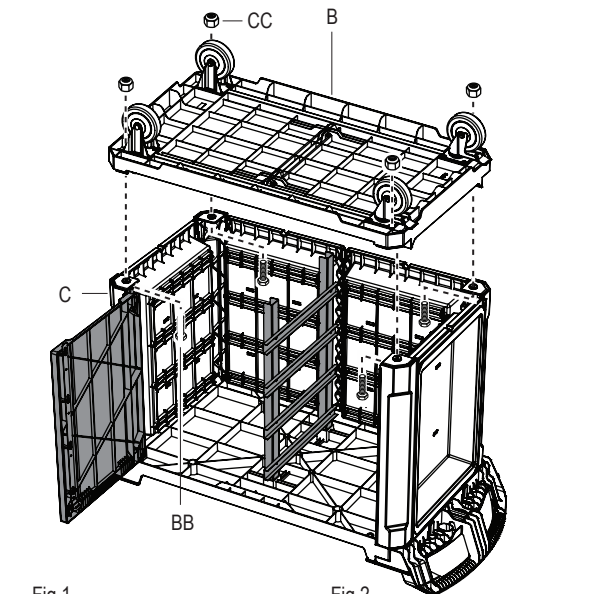
- Install the center support (H) with the drawer slides facing the panel (G). The slide overhang should face the workstation opening.
- Install the door (E) pin into the tray (A).



6 Installing the Base

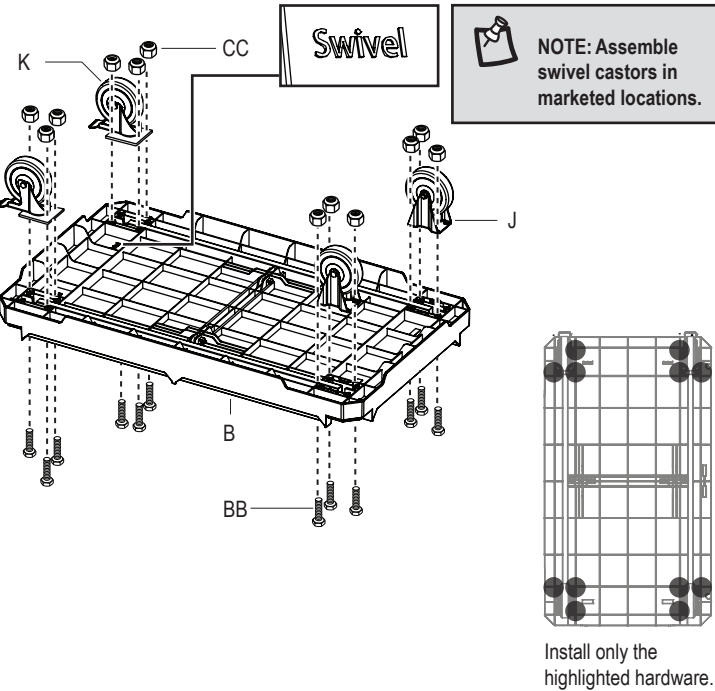
- Assemble the base (B) onto the legs (C) using four nuts (DD), and four bolts (BB).
- Align the drawer pin pivot (Fig. 1).
- Align the center support (Fig. 2).

NOTE: Begin installation in a corner aligning the base onto the legs one at a time.



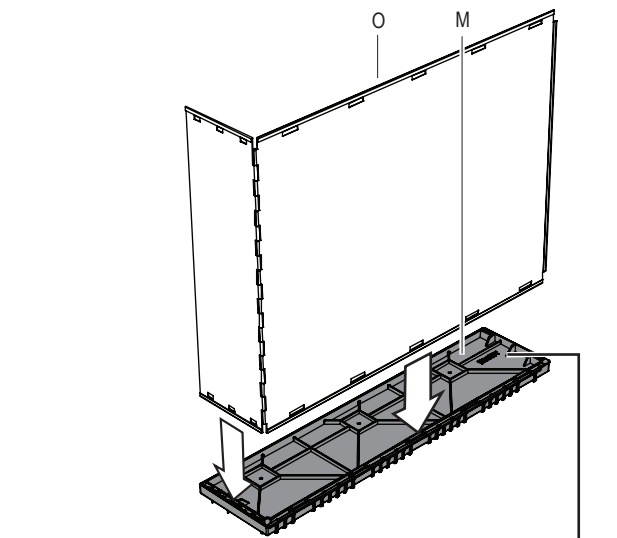
5 Installing the Casters

- Install the casters (K/J) onto the base (B) using twelve bolts (BB), and twelve nuts (CC).

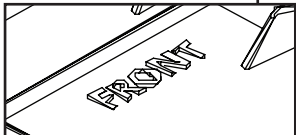
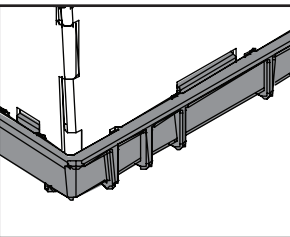


7 Assembling the Drawers

- Insert the drawer base (O) into the left drawer side (M).
- Push firmly against a hard surface until the drawer base snaps into the drawer side.



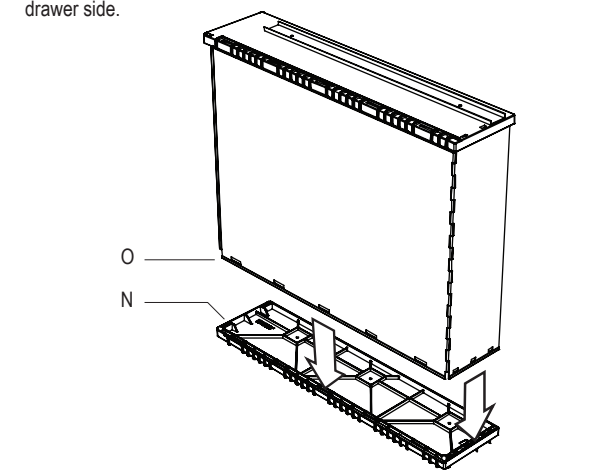
NOTE: Ensure each snap on the drawer side is engaged with the drawer base.



NOTE: Drawer direction and drawer side (R / L) indicator.

8 Assembling the Drawers (cont.)

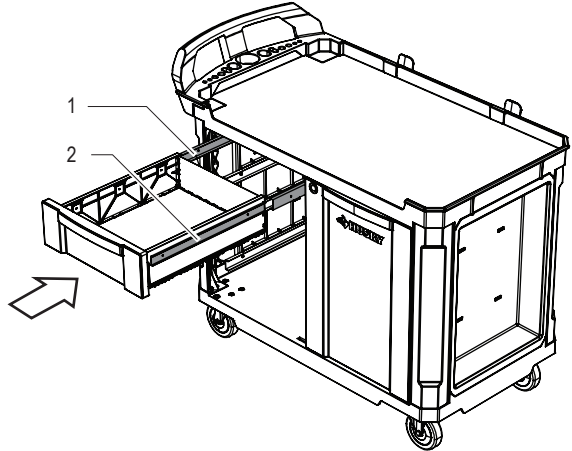
- Insert the drawer base (O) into the right drawer side (N).
- Push firmly against a hard surface until the drawer base snaps into the drawer side.



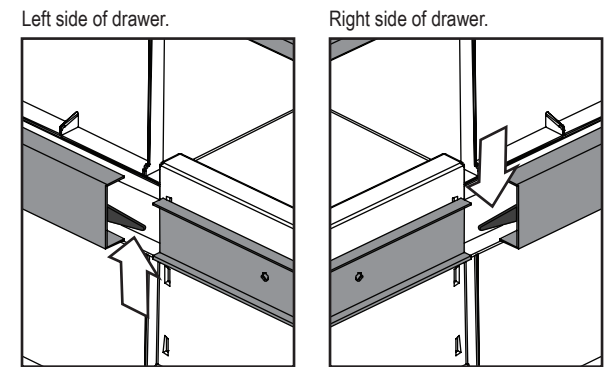
NOTE: Ensure each snap on the drawer side is engaged with the drawer base. Identify drawer direction and drawer side (R / L) indicator.

10 Installing the Drawers

- Extend the drawer slides (1).
- Insert the brackets (2) on the side of each drawer into the slots on the slides being careful that they are properly aligned.
- Once properly inserted, completely close the drawer to set the slides in position.

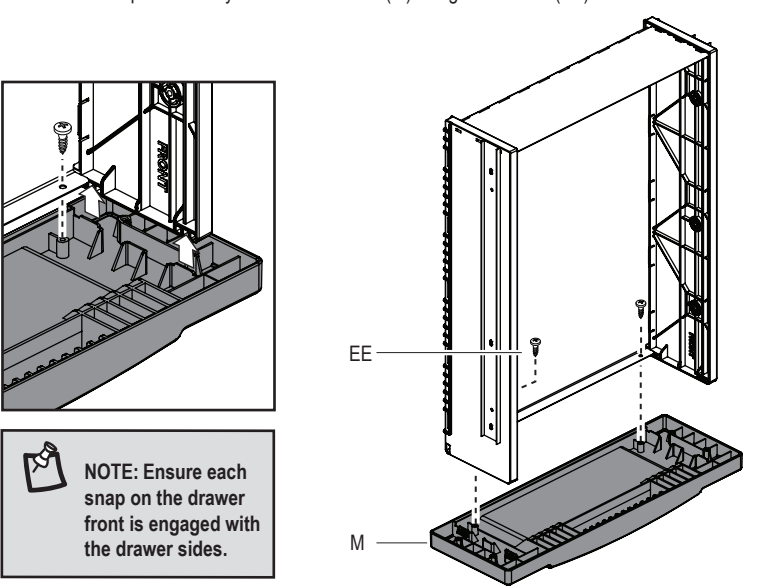


NOTE: To remove the drawers, fully open the empty drawer. Push down on the right release lever while pushing up on the left release lever. Pull the drawer outward while holding the release levers until the drawer is released from the slides.



9 Assembling the Drawer Fronts

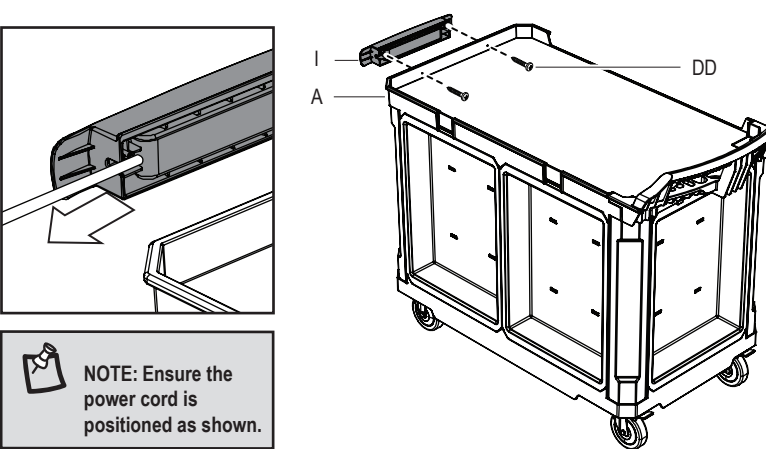
- Snap the step 8 assembly onto drawer front (M).
- Push firmly against a hard surface until the drawer base snaps into the drawer side.
- Attach the step 8 assembly to the drawer front (M) using two screws (EE).



NOTE: Ensure each snap on the drawer front is engaged with the drawer sides.

11 Installing the Power Supply

- Install the power strip (I) to the tray (A) using two screws (DD).



NOTE: Ensure the power cord is positioned as shown.

12 Installing Accessories

- Snap accessory hooks (P) by pushing down firmly into the tray (A).
- Hang accessory bins (Q) on any panel (F/G).

