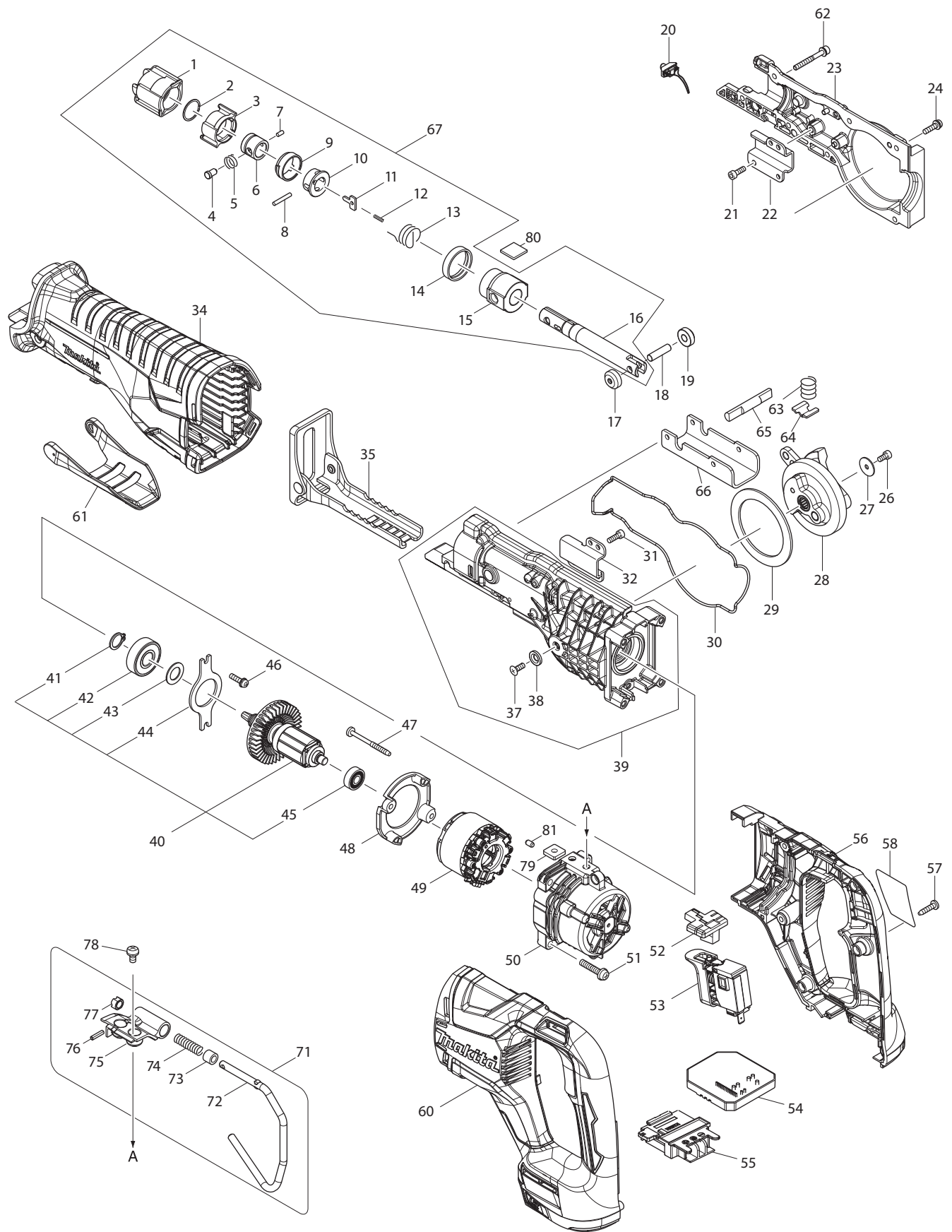


Model XPH07M/XPH07Z Parts List

A = Standard Equipment

O = Circuit Diagram

Item#	MJ Part#	Description	Q'ty	Unit
001	187921-4	HOUSING SET	1	
	C10 263005-3	RUBBER PIN 6	2	PC.
	D10	INC. 21		
002	815S70-8	XPH07 NAME PLATE	1	
003	266130-9	TAPPING SCREW BIND PT 3X16	7	PC.
004	232220-0	LEAF SPRING	2	PC.
005	126411-2	SPEED CHANGE LEVER ASSEMBL	1	
	C10 233438-6	COMPRESSION SPRING 4	2	PC.
006	419250-0	F/R CHANGE LEVER	1	PC.
007	650710-5	SWITCH C3JW-4B	1	
008	251468-5	- FLAT HEAD SCREW M6X22	1	PC.
009	766015-4	KEYLESS DRILL CHUCK 13	1	PC.
010	265995-6	TAPPING SCREW 4X18	4	PC.
011	126410-4	GEAR ASSEMBLY	1	
012	142263-3	INDICATOR PANEL COMPLETE	1	
013	424517-3	CUSHION	1	PC.
014	629116-8	STATOR COMPLETE	1	PC.
015	619336-2	ROTOR	1	
016	266130-9	TAPPING SCREW BIND PT 3X16	2	PC.
017	455011-4	REAR COVER	1	
018	620283-2	LED CIRCUIT	1	
019	643899-6	TERMINAL	1	PC.
020	803N96-2	CAUTION LABEL	1	
021	187921-4	HOUSING SET	1	
	C10 263005-3	RUBBER PIN 6	2	PC.
	D10	INC. 1		
A01	122576-8	STOPPER POLE ASS'Y	1	PC.
A02	126413-8	GRIP ASSEMBLY	1	
	C10 142652-2	POLE COMPLETE	1	
	C20 142653-0	ARM R COMPLETE	1	
	C30 265785-7	THUMB SCREW M5X10	1	PC.
	C40 266886-4	HEX. BOLT M8X65	1	
	C50 319129-4	ARM L	1	
	C60 931202-6	HEX. NUT M5	1	PC.
	C70 962055-2	RETAINING RING (INT) R-15	1	PC.
A03	251314-2	+ SCREW M4X12	2	PC.
A04	346449-3	HOOK	1	PC.
A05	452947-8	BIT HOLDER	1	PC.
A06	784637-8	+ BIT 2-45	2	PC.
A07	821524-1	PLASTIC CARRYING CASE	1	PC. (XPH07M)
	C10 162302-3	LATCH	2	PC.
	C20 325809-2	SHAFT	1	PC.
	C30 451749-9	HANDLE	1	PC.
	C40 453473-0	PLASTIC CASE LID	1	PC.
A08	***DC18RC	DC18RC FAST CHARGER	1	PC. (XPH07M)
A09	BL1840	BATTERY BL1840 SET (196402-7)	2	(XPH07M)
A10	450128-8	BATTERY COVER	1	PC. (XPH07M)



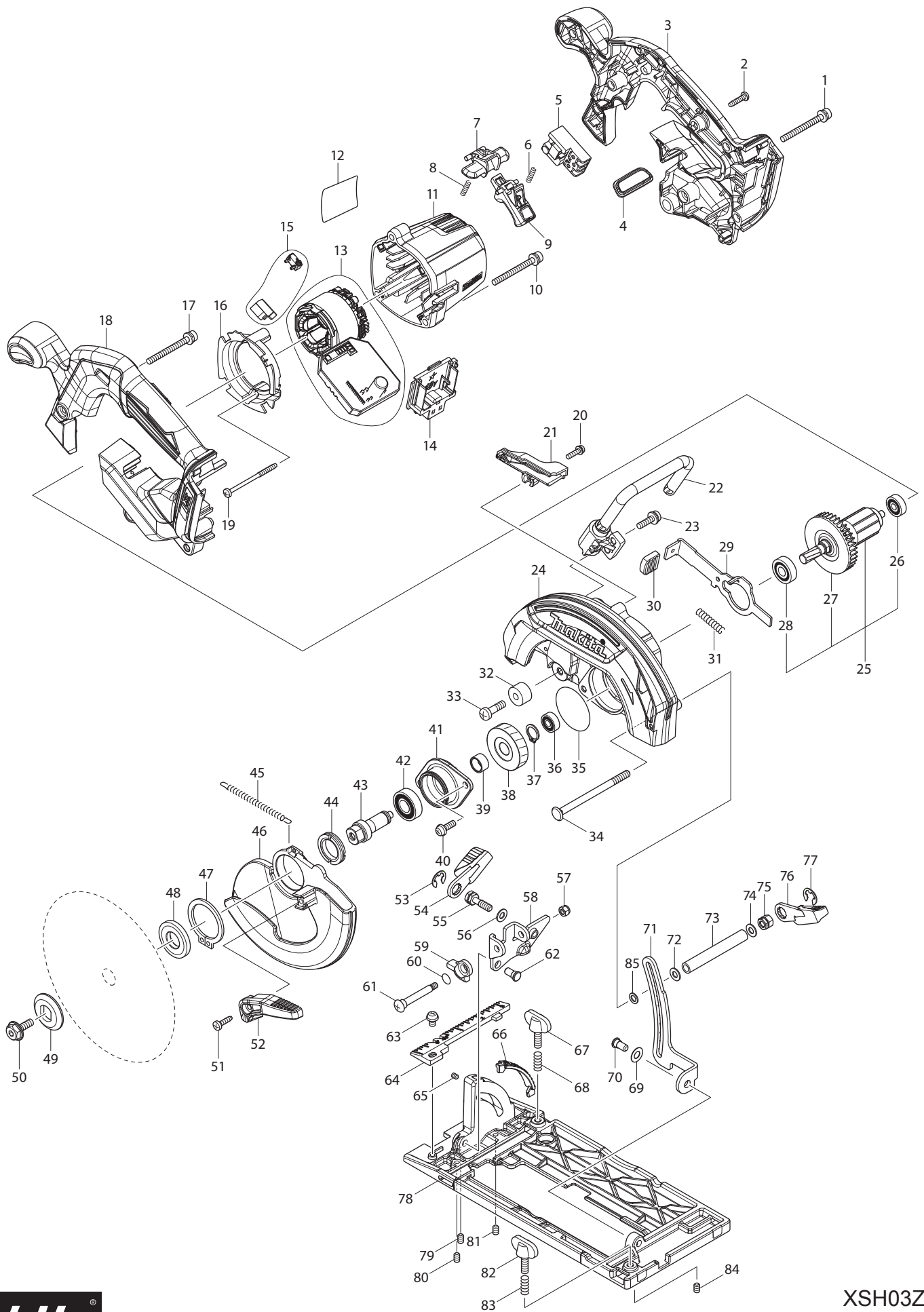
Model XRJ05M/Z Parts List

A = Standard Equipment

O = Circuit Diagram

Item#	Part#	Description	Q'ty Unit
001	424763-8	PROTECTOR	1
002	257952-8	RETAINING RING (EXT) 18	1 PC.
003	310662-9	DRIVING SLEEVE	1
004	256569-4	SHOULDER PIN 5	1
005	234381-2	COMPRESSION SPRING 6	1
006	331720-8	GUIDE SLEEVE	1 PC.
007	268094-3	PIN 3	1 PC.
008	256158-5	PIN 3	1 PC.
009	417791-0	DRIVING SLEEVE GUIDE	1 PC.
010	418311-3	SLEEVE	1 PC.
011	345214-7	PUSH PLATE	1 PC.
012	233025-1	COMPRESSION SPRING 2	1 PC.
013	231687-9	TORSION SPRING 17	1 PC.
014	424762-0	RUBBER RING	1
015	143365-8	SLIDER GUIDE COMPLETE	1 PC.
	C10 213151-2	OIL SEAL 14	1 PC.
	C20 213174-0	X RING 14	1 PC.
016	161376-1	SLIDER	1
017	310663-7	ROLLER	1
018	268341-2	PIN 6	1
019	310663-7	ROLLER	1
020	620434-7	LED CIRCUIT	1 PC.
021	922117-8	HEX. SOCKET HEAD BOLT M4X12	2 PC.
022	346936-2	ROD GUIDE R	1
023	143362-4	GEAR HOUSING R COMPLETE	1 PC.
024	911128-8	PAN HEAD SCREW M4X16	5 PC.
026	922107-1	HEX. SOCKET HEAD BOLT M4X8	1 PC.
027	267491-0	FLAT WASHER 4	1
028	143359-3	GEAR COMPLETE	1 PC.
029	267490-2	FLAT WASHER 54	1
030	424764-6	SEAL RING	1
031	922117-8	HEX. SOCKET HEAD BOLT M4X12	2 PC.
032	346935-4	ROD GUIDE L	1
034	424765-4	INSULATION COVER	1
035	161374-5	SHOE	1
037	912112-6	COUNTERSUNK HEAD SCREW M4X10	1 PC.
038	253825-3	FLAT WASHER 6	1 PC.
039	123509-6	GEAR HOUSING L ASSEMBLY	1 PC.
	D10	INC. 37,38	
040-1	519418-9	ROTOR ASS'Y	1
	D10	INC. 41-45	
041	961052-5	RETAINING RING S-12	1 PC.
042	211129-9	BALL BEARING 6201DDW	1 PC.
043	253744-3	FLAT WASHER 12	1 PC.
044	285740-3	BEARING RETAINER 66	1
045	210062-2	BALL BEARING 607ZZ	1 PC.
046	911128-8	PAN HEAD SCREW M4X16	2 PC.
047	266069-6	TAPPING SCREW 4X45	2 PC.
048	456178-1	BAFFLE PLATE	1

049	629179-4	STATOR	1	
050	456179-9	MOTOR HOUSING	1	
051	911243-8	PAN HEAD SCREW M5X25	4 PC.	
052	456177-3	CHANGE BUTTON	1	
053	650759-5	SWITCH C3JW-6B-2	1	
054	620432-1	CONTROLLER A	1 PC.	
055	643899-6	TERMINAL	1 PC.	
056	183C47-8	HANDLE SET	1	
	C10 263005-3	RUBBER PIN 6	2 PC.	
	D10	INC. 60		
057	266326-2	TAPPING SCREW 4X18	6 PC.	
058	851P11-2	XRJ05 NAME PLATE	1	
059	807Y38-4	CAUTION LABEL	1	
060	183C47-8	HANDLE SET	1	
	C10 263005-3	RUBBER PIN 6	2 PC.	
	D10	INC. 56		
061	456176-5	LOCK LEVER	1	
062	266979-7	HEX.SOCKET HEAD BOLT M4X35 WR	2	
063	231231-2	COMPRESSION SPRING 12	1 PC.	
064	346938-8	SHOE LOCK PLATE	1	
065	326599-0	LOCK PIN	1	
066	346937-0	SHOE GUIDE PLATE	1	
067	123510-1	SLIDER ASSEMBLY	1 PC.	
	D10	INC. 1-16		
071	123455-3	HOOK ASSEMBLY	1 PC.	
	D10	INC. 72-77		
072	281223-1	HOOK	1	
073	262561-0	SLEEVE 6	1 PC.	
074	233455-6	COMPRESSION SPRING 7	1 PC.	
075	319344-0	JOINT	1	
076	951057-3	SPRING PIN 3-12	1 PC.	
077	310661-1	LOCK SLEEVE	1	
078	911206-4	PAN HEAD SCREW M5X10	2 PC.	
079	264002-2	SQUARE NUT M5	2 PC.	
080	424858-7	FELT 16X16	1 PC.	
081	263002-9	RUBBER PIN 4	1 PC.	
A01	194502-7	RECIPRO SAW BLADE SET	1 SET	
A03	821620-5	PLASTIC TOOL CASE	1	(XRJ05M)
	C10 162271-8	LATCH	2 PC.	(XRJ05M)
A05	450128-8	BATTERY COVER	1 PC.	(XRJ05M)
A06	***DC18RC	DC18RC FAST CHARGER	1 PC.	(XRJ05M)
	D10	COMPO-PARTS		
A07	BL1840B	BATTERY BL1840B SET (197268-8)	2	(XRJ05M)



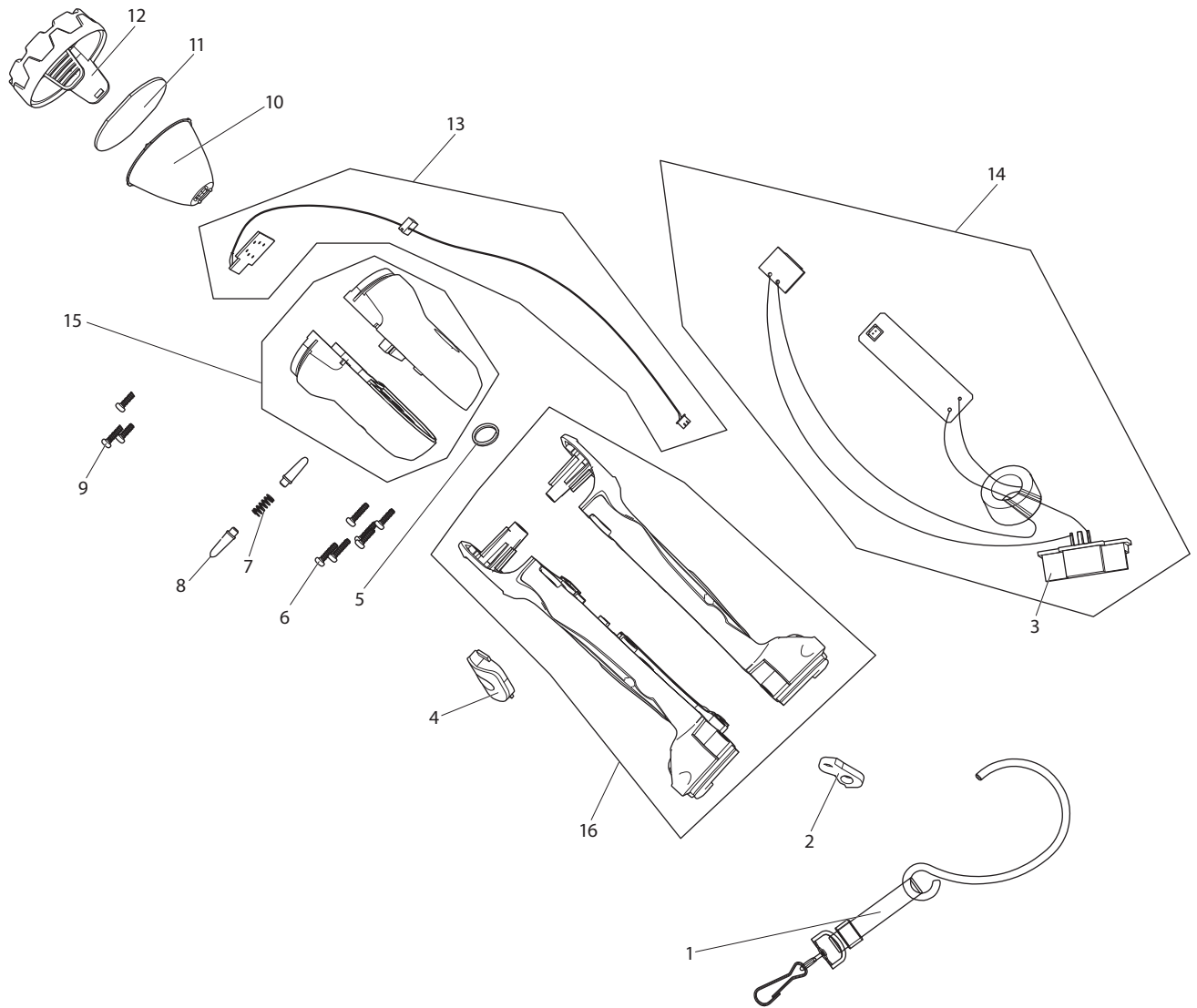
Model XSH03Z Parts List

A = Standard Equipment

O = Circuit Diagram

Item#	Part#	Description	Q'ty	Unit
001	911263-2	PAN HEAD SCREW M5X40	1	PC.
002	265995-6	TAPPING SCREW 4X18	7	PC.
003	183A13-3	HANDLE SET	1	
	C10 263005-3	RUBBER PIN 6	2	PC.
	C20 805E02-9	CAUTION LABEL	1	
	D10	INC. 18		
004	142948-1	INDICATION PLATE COMPLETE	1	
005	650734-1	SWITCH TG73BDS-2	1	
006	231469-9	COMPRESSION SPRING 4	1	PC.
007	419664-3	LOCK OFF LEVER	1	PC.
008	231469-9	COMPRESSION SPRING 4	1	PC.
009	455480-9	SWITCH LEVER	1	
010	911263-2	PAN HEAD SCREW M5X40	3	PC.
011	455437-0	MOTOR HOUSING	1	
012	850H70-5	XSH03 NAME PLATE	1	
013	632D90-5	STATOR UNIT	1	PC.
014	644808-8	TERMINAL	1	PC.
015	632D81-6	SWITCH UNIT	1	
016	455440-1	BAFFLE PLATE	1	
017	911263-2	PAN HEAD SCREW M5X40	1	PC.
018	183A13-3	HANDLE SET	1	
	C10 263005-3	RUBBER PIN 6	2	PC.
	C20 805E02-9	CAUTION LABEL	1	
	D10	INC. 3		
019	266091-3	TAPPING SCREW 4X50	2	PC.
020	911128-8	PAN HEAD SCREW M4X16	1	PC.
021	455483-3	DUCT	1	
022	123269-0	HOOK ASSEMBLY	1	PC.
023	911233-1	PAN HEAD SCREW M5X20	2	PC.
024	142942-3	BLADE CASE COMPLATE	1	
	C10 213953-6	O RING 24	1	PC.
025	519359-9	ROTOR ASS'Y	1	PC.
	D10	INC. 26-28		
026	210022-4	BALL BEARING 626DDW	1	PC.
027	240045-8	FAN 55	1	PC.
028	210051-7	BALL BEARING 609LLB	1	PC.
029	346837-4	SHAFT LOCK	1	
030	286275-7	CAP	1	PC.
031	233117-6	COMPRESSION SPRING 6	1	PC.
032	262552-1	RUBBER SLEEVE 6	1	PC.
033	251247-1	+ PAN HEAD SCREW M6X20	1	PC.
034	266194-3	FLAT HEAD SCREW M6X90	1	PC.
035	213565-5	O RING 42	1	PC.
036	210028-2	BALL BEARING 606ZZ	1	PC.
037	961052-5	RETAINING RING S-12	1	PC.
038	227794-4	HELICAL GEAR 50	1	
039	257349-1	SLEEVE 12	1	
040	911223-4	PAN HEAD SCREW M5X16	2	PC.
041	319212-7	BEARING BOX	1	
042	211131-2	BALL BEARING 6001DDW	1	PC.

043	326459-6	SPINDLE	1
044	285845-9	BEARING RETAINER 19-29	1 PC.
045	231878-2	TENSION SPRING 4	1 PC.
046	319211-9	SAFETY COVER	1
047	961152-1	RETAINING RING (EXT) S-34	1 PC.
048	224411-7	INNER FLANGE 35	1 PC.
049	224409-4	OUTER FLANGE 35	1 PC.
050	266924-2	HEX. SOCKET HEX. BOLT M6X18	1
051	266034-5	TAPPING SCREW CT 4X16	1 PC.
052	272282-6	LEVER 60	1
053	257982-9	BOW STOP RING E-8	1 PC.
054	272272-9	LEVER 45	1 PC.
055	266735-5	HEX.BOLT M6X20	1 PC.
056	941151-9	FLAT WASHER 6	1 PC.
057	252103-8	HEX. LOCK NUT M5-8	1 PC.
058	346836-6	ANGULAR GUIDE	1
059	317986-4	STOPPER	1 PC.
060	213062-1	O RING 9	1 PC.
061	265084-7	+ TRUSS HEAD SCREW M5	1 PC.
062	256480-0	SHOULDER PIN 6-7	1 PC.
063	911203-0	PAN HEAD SCREW M5X8	1 PC.
064	455515-6	TOP GUIDE	1
065	266318-1	H.S.SET SCREW(FLAT POINT)M4X6	2 PC.
066	455517-2	BEVEL GUIDE	1
067	251896-4	SCREW M5X20	1 PC.
068	231007-7	COMPRESSION SPRING 6	1 PC.
069	253058-0	FLAT WASHER 7	1 PC.
070	256511-5	SHOULDER PIN 6-7	1 PC.
071	346835-8	DEPTH GUIDE	1
072	941151-9	FLAT WASHER 6	1 PC.
073	332126-3	PIPE 6	1
074	941151-9	FLAT WASHER 6	1 PC.
075	264103-6	HEX. NUT M6	1
076	272272-9	LEVER 45	1 PC.
077	257982-9	BOW STOP RING E-8	1 PC.
078	319210-1	BASE	1
079	266436-5	H.S.SET SCREW(FLAT POINT)M5X8	1
080	266436-5	H.S.SET SCREW(FLAT POINT)M5X8	1
081	266436-5	H.S.SET SCREW(FLAT POINT)M5X8	1
082	251896-4	SCREW M5X20	1 PC.
083	231007-7	COMPRESSION SPRING 6	1 PC.
084	266436-5	H.S.SET SCREW(FLAT POINT)M5X8	1
085	253077-6	FLAT WASHER 6	1 PC.
A01	783203-8	HEX. WRENCH 5	1 PC.
A02	A-85092	T.C.T.SAW BLADE 165X24TX15.88	1 PC.
E01	805E03-7	CAUTION LABEL	1



Model DML802 Parts List

A = Standard Equipment

O = Circuit Diagram

Item#	Part#	Description	Q'ty	Unit
001	GM00001289	HOOK BAND SET(G0180200100)	1	PC.
002	GM00001290	HOOK PLATE(B2804802921)	1	PC.
003	GM00001117	BATTERY HOLDER C2010239007	1	PC.
004	GM00001291	SWITCH COVER(G0180200200)	1	PC.
005	GM00001292	RING (B3103184009)	1	PC.
006	GM00001293	SCREW 3X12 PB(B0130120202)	6	PC.
007	GM00001294	COMPRESSION SPRING(B1303802921)	1	PC.
008	GM00001295	LOCKING SHAFT(C4120802001)	2	PC.
009	GM00001296	SCREW M3X8(B0120308099)	3	PC.
010	GM00001297	REFLECTOR(C0120802004)	1	PC.
011	GM00001298	LENS(C1720802001)	1	PC.
012	GM00001299	BEZEL(C1720802002)	1	PC.
013-1	GM00001213	LED CIRCUIT ASS'Y(G0380220100)	1	PC.
014	GM00001301	MAIN CIRCUIT ASS'Y(G0380220200)	1	PC.
015	GM00001302	ALUMINUM HEAD L/R(G0180200300)	1	SET
016	GM00001303	HOUSING L/R(G0180200400)	1	SET