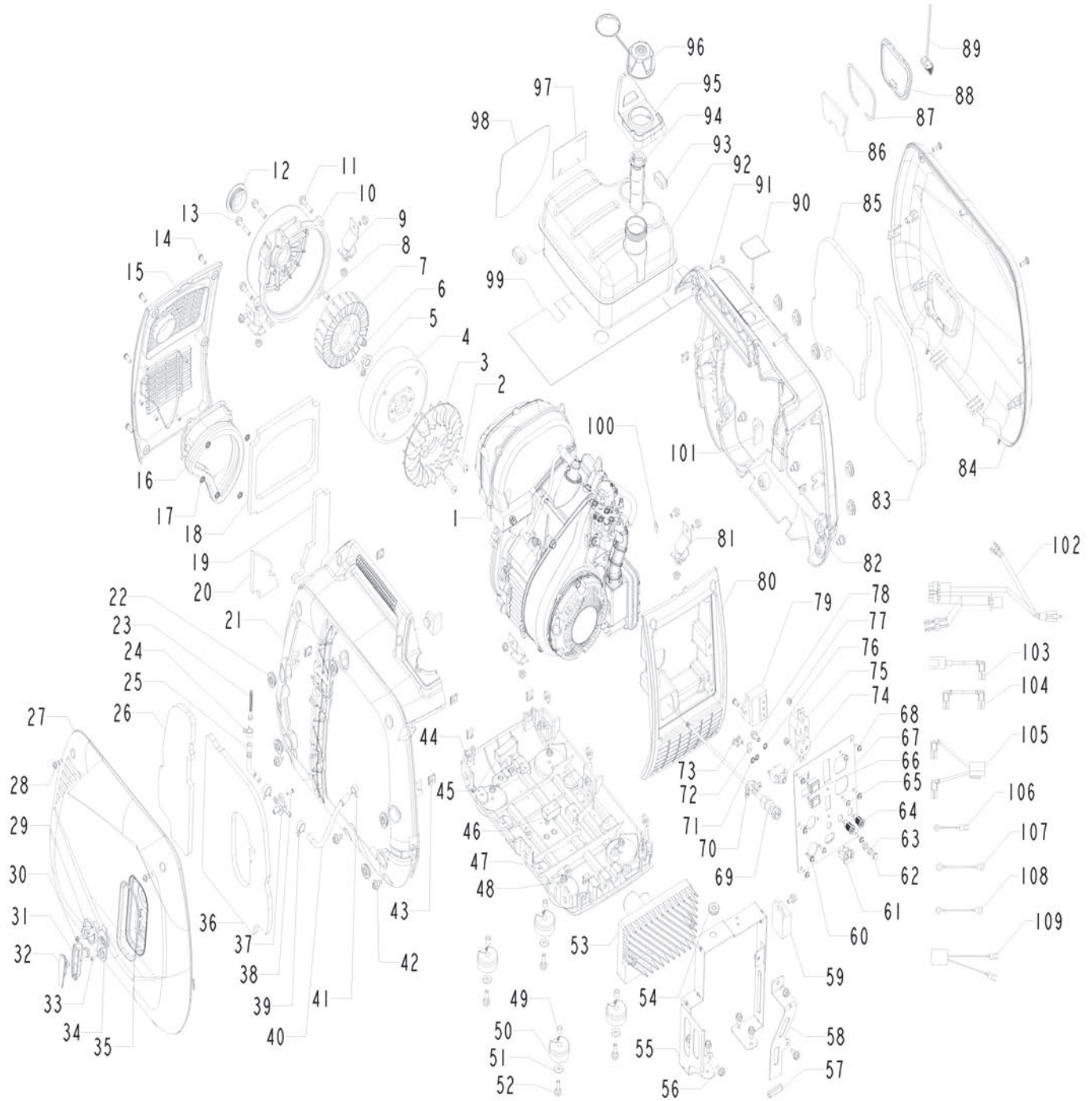


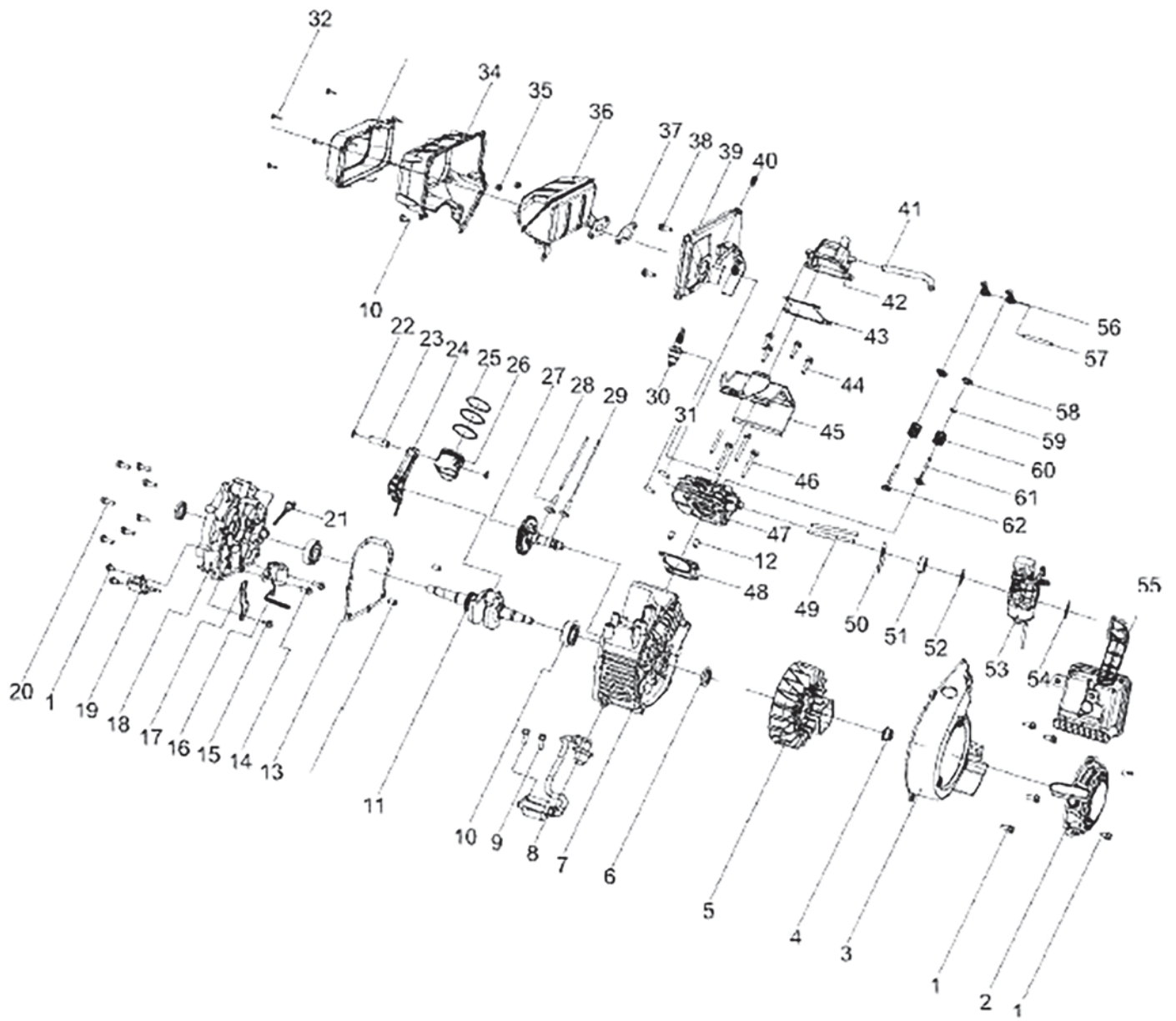
PARTS DIAGRAM



#	Part Number	Description	QTY.
1	101200040001000	Engine	1
2	B02210601627	Cross Recess Head Screw	2
3	32100422003800	Fan	1
4	22070422003000	Alternator	1
5	34010114001000	Hexagon Flange Nut	1
6	B02040503565	Inner Hexagon Screw	2
7	22050422003000	Stator	1
8	31140127002000	Pin	2
9	22030422003800	Shock Absorbing Foot	2
10	32070422003000	End Cover	1
11	B01310603065	Increased Flange Bolt	3
12	32080422003000	Plug, end cover	1
13	B01310603566	Increased Flange Bolt	2
14	B13080501627	Screw	13
15	34120422003800	Rear Exhaust Cover	1
16	34130422003800	Rubber Duct	1
17	30010222511060	Retainer Ring	5
18	34140422003000	Insulating Foam, Exhaust Port	1
19	34160422003000	Insulating Foam, Right Inlet	1
20	34150422003000	Insulating Foam, Left Inlet	1
21	24030422005000	Leif Boby	1
22	34040422003800	Rubber Grommet	10
23	20140421200000	Fuel Filter	1
24	31210421202000	Clamp	1
25	33100422003800	Oil Pipe	1
26	34200422003000	Left Foam Seal II	1
27	34180422005750	Left Body Cover	1
28	30230421202000	Screw M6*17	4
29	34220422003800	Fuel Petcock Knob	1
30	30040422001670	Screw M4*11	1
31	30160421202000	Pull Start Handle	1
32	30170421202000	Pull Start Handle Cover	1
33	B05210501607	Truss Head Tapping Screw	1
34	34210422003800	Rope Guide Plate Assembly	1
35	34330422003000	Decorating Ring	1
36	34190422003000	Left Foam Seal I	1
37	20110421200001	Fuel Cock	1
38	B05210401607	Truss Head Tapping Screw	1
39	31190421202000	Clamp	2
40	33110422003800	Fuel Hose, Carburetor	1
41	31200421202000	Clamp	1
42	31150422003020	Shoulder Screws	6
43	30220421202000	Spring Nut	12
44	31070422003020	Square Nut	6
45	31030422003800	Cushion Pad	1
46	31040422003800	Bumper Block,Engine	1
47	21020422003000	Body Base Plate	1
48	B04280600047	Flange Nut	8
49	31020412600010	Spacer	4
50	31050422003800	Damping Foot	4
51	B07020006047	Flat Gasket	4
52	B01310602067	Flange Nut	4
53	21040422005000	Inverter Assy	1
54	31140422003800	Damping Ring, Fual Tank	1
55	B01310601267	Flange Bolt M6*12	13
56	B02270403027	Cross Recess Head Screw	2
57	31130422003800	Rubber Cushion,Inverter Mounting Bracket	1

#	Part Number	Description	QTY.
58	31120422003800	Inverter Mounting Bracket ,Front	1
59	23250421200000	Voltage regulator	1
60	B13080400827	Screw	2
61	22060411500000	T Type Socket	1
62	B04190600044	Cap Nut	1
63	B04010600048	Hex Nut	2
64	20110421202000	Parallel Connection Socket	2
65	B02210401227	Cross Recess Head Screw	6
66	22030410900000	Engine Switch	2
67	25020452005800	Panel Assy	1
68	B02210501227	Cross Recess Head Screw	4
69	32160422003800	Choke Lever Mounting Plate	1
70	22080422003000	Choke Lever	1
71	B07180005056	Lock Washer 5	2
72	32060421202000	Grounding Piece 5	1
73	B13080500827	Screw	2
74	B28421080010	Circuit Breaker	1
75	22070413200000	120V Socket	1
76	B07180006056	Lock Washer 6	2
77	B04280400047	Flang Nut M4	2
78	B01310601628	Flang Blot M6*16	1
79	25030422003000	Light Indicator Assembly	1
80	34110422003800	Front Cover	1
81	22030422003801	Shock Absorbing Foot	2
82	24050422005000	Right Casing	1
83	34240422003000	Insulating Foam I, Right Body Cover	1
84	34230422005750	Right Body	1
85	34250422003000	Insulating Foam II, Right Body Cover	1
86	34280422003000	Foam II, Oil Fill Cover	1
87	34290422003000	Foam II, Oil Fill Cover	1
88	34260422003750	Oil Fill Cover	1
89	34270422003800	Tether, Oil Fill Cover	1
90	34100422003800	Spark Plug Access Cover	1
91	B02210602027	Cross Recess Head Screw	2
92	23010422005800	Fuel Tank	1
93	33060422003800	Tank Mounting Rubber Cushion	2
94	21030421202000	Fuel Filter	1
95	34080422005000	Rubber Mat, fuel filling Port	1
96	21120421202001	Fuel Tank Cap	1
97	33070422003000	Silver Paper I	1
98	33080422003000	Silver Paper II	1
99	33090422003000	Silver Paper III	1
100	30090422001000	Grounding Piece 6	1
101	34030422003800	Rubber Pad	2
102	21070422003000	Cable Assy	1
103	35110422005000	Parallel Cable	2
104	35130422003000	Connection Cabel,DC protector	1
105	35120422003000	DC Connecting Cable (American)	1
106	35080422003000	Ground Wire5-5	1
107	35090422003000	Ground Wire5-6	1
108	32090422003000	Ground Wire6-6	1
109	22070421202000	AC Connecting Cable	1
110			
111			
112			
113			
114			

PARTS DIAGRAM

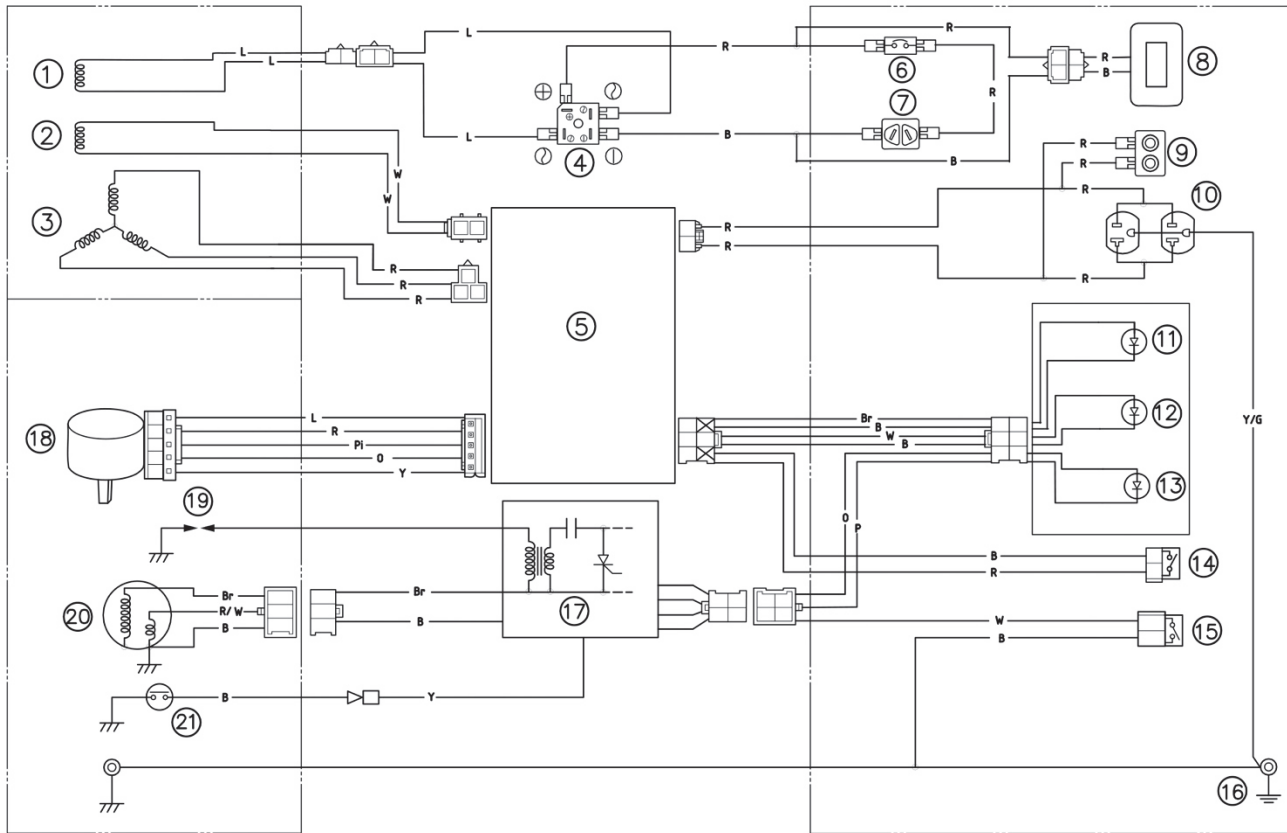


PARTS DIAGRAM

#	Part Number	Description	QTY.
1	B01310601466	Bolt, Flange M6*14	7
2	26040119001000	Stater Assy.	1
3	36070120001000	Case, Fan	1
4	34060119001020	Nut M12	1
5	38030119001000	Rotor Assy.	1
6	B15302035053	Oil Seal $\Phi 20 \times \Phi 35 \times 5$	2
7	31070120001000	Crankcase	1
8	38020119001000	Ignition Coil Assy.	1
9	B01310602066	Bolt, Flange M6*20	2
10	B12016020453	Bearing 6204/P53	2
11	24020120001000	Crankshaft Assy.	1
12	31140127002000	Pin, Dowel	4
13	31020120001000	Gasket, Crankcase Cover	1
14	B01310601666	Bolt, Flange M6*16	2
15	B01310601266	Bolt, Flange M6*12	2
16	31030119001000	Oil Lever Gauge Assy.	1
17	31040120001000	Clamp	1
18	31010120001000	Cover Crankcase	1
19	38010119001000	Coil Assy.	1
20	B01310602066	Bolt, Flange M6*20	9
21	31050120001000	Oil Dipstick Assy.	1
22	34030119001000	Circlip	2
23	34020119001000	Pin, Piston	1
24	24030119001000	Connecting Rod Assy.	1
25	24040119001000	Piston Ring Set	1
26	34010119001000	Piston	1
27	22040119001000	Camshaft Assy.	1
28	32060120001000	Lifter, Valve	2
29	32080120001000	Rod, Valve Push	2
30	31250114001000	Plug, Spark A7RTC	1
31	32120119001000	Bolt, Stud	2
32	B020048016C6	Screw, ST4.8*16	5
33	36030120001000	Duct	1
34	36310119001000	Protector Assy.	1
35	B04280600026	Nut M6	4

#	Part Number	Description	QTY.
38	B01310601666	Bolt, Flange M6*16	2
39	36100120001000	Protector Assy.	1
40	36060120001000	Nut Spring	1
41	37060120001000	Pipe, Breather	1
42	32200120001000	Cover, Cylinder Head	1
43	32110120001000	Gasket, Cylinder	1
44	B01310601866	Bolt, Flange M6*18	4
45	36010120001000	Air Shroud, Cylinder 1	1
46	B01310605086	Bolt, Flange M6*50	4
47	22020120001000	Head, Cylinder	1
48	32130119001000	Gasket, Cylinder Head	1
49	32050135001000	Bolt, Stud	2
50	32120120001000	Gasket, Manifold	1
51	32130120001000	Joint	1
52	37020120001000	Gasket, Manifold	1
53	27430119001000	Carburetor Assy.	1
54	37030120001000	Gasket Air Cleaner	1
55	27030120001000	Air Cleaner	1
56	22030120001000	ARM, Valve Rocker	2
57	32030120001000	Shaft, Rocker	1
58	33110114001000	Retainer, Valve Spring	2
59	31010114001000	Seal, Valve Stem	1
60	32050120001000	Spring, Compression	2
61	32010120001000	Valve, Exhaust	1
62	32020120001000	Valve, Intake	1

Wiring Diagram



- ① DC WINDING
- ② SUB WINDING
- ③ MAIN WINDING
- ④ RECTIFIER
- ⑤ INVERTER UNIT
- ⑥ CIRCUIT BREAKER (DC)
- ⑦ DC OUTPUT RECEPTACLE
- ⑧ USB OUTPUT RECEPTACLE
- ⑨ TWIN TECH (PARALLEL TERMINAL)
- ⑩ AC OUTPUT RECEPTACLE
- ⑪ OUTPUT INDICATOR
- ⑫ OVERLOAD INDICATOR
- ⑬ OIL ALERT INDICATOR
- ⑭ ECO THROTTLE SWITCH
- ⑮ ENGINE STOP SWITCH
- ⑯ GROUND (Earth) terminal
- ⑰ C. D. I. UNIT
- ⑱ THROTTLE CONTROL MOTOR
- ⑲ SPARK PLUG
- ⑳ C. D. I. MAGNETO
- ㉑ OIL LEVEL SWITCH

Color code	
B	Black
Br	Brown
G	Green
L	Blue
O	Orange
P	Purple
Pi	Pink
R	Red
W	White
Y	Yellow
Y/G	Yellow/Green
R/W	Red/White