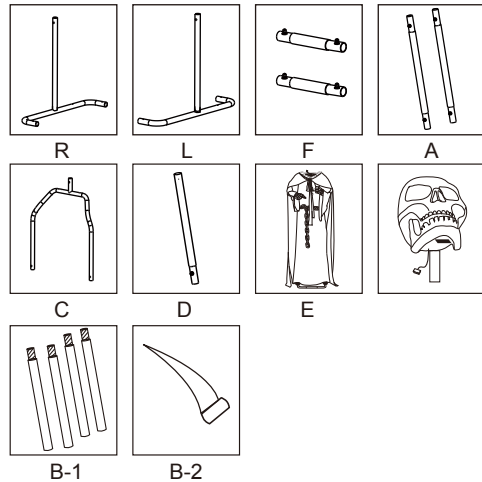




ITEM # 8330-72021HD
**SET-UP/ OPERATING INSTRUCTIONS FOR
 72" LED ANIMATED TALKING GRIM REAPER**
 INSTRUCTION MANUAL

Part	Description	Quantity
R	Right Foot	1
L	Left Foot	1
F	Base metal support rods	2
A	Right and Left foot metal support rods	2
C	Hip Rod	1
D	Body Support Rod	1
E	Grim Reaper's Body - Includes Battery Compartment and DEMO/OFF/ON Switch	1
G	Head	1
B-1	Scythe support rods	4
B-2	Scythe	1



Questions, problems, missing parts? Before returning to your retailer, call our customer service department at 1-877-527-0313, 8 a.m. and 5 p.m., EST, Monday-Friday or email at info@pan-asian.com.hk.

WARNING: This is not a toy. For decorative purposes only. For indoor and outdoor covered use. Not intended for use by children under the age of 14. Do not place product near any heat source and fire source such as radiators, stoves, fireplaces, etc.

PREPARATION: Before beginning assembly of the 72" Grim Reaper, make sure all of the parts are present. Compare the parts with the package contents list in the above diagram. If any of the parts are missing or damaged, do not attempt to assemble the Grim Reaper. Contact Customer Service for replacement parts.

SET-UP INSTRUCTIONS:

Assembling the Grim Reaper. Carefully remove contents from the box.

- Step 1:** Please use the Metal Support Rods "F" to connect the Right Foot "R" and the left Foot "L" together, which will complete the assembly of the Grim Reapers Support Base. Once the Support Base is assembled, insert the Right and Left Foot Metal Support Rods "A" into the top of the Grim Reaper's feet on the Support Base, as shown in Diagram "1". Once the Metal Support Rods are in place, attach the "Hip Rod" section "C" into the Support Rods, as shown in Diagram "1". Please make sure to align the "Hip Rod" section correctly, as shown in Figure "1-A". Please note the "Locking Pin" pictured in the blowup Figure "1-B" - once you have joined the two sections together, push in on the "Locking Pin" to connect the metal support. When disassembling the Grim Reaper, reverse the procedure.
- Step 2:** Attach the Grim Reaper's Body Connection Rod "D" into the Hip Section "C", as shown in Diagram "2". Once the metal stand is fully assemble, attach the Grim Reaper's Body Section "E" to the metal Support Rod "D", which is shown in Diagram "2".
- Step 3:** Once the Reaper's Body is attached to the Hip Section, the Grim Reaper's Head "G" can be attached to the Body Section (see Diagram "3" for reference). Make sure that the Grim Reaper's Head is securely attached to the Body before connecting the pair of Wire Connectors together. When connecting the Wire Connectors, make sure that each end aligns correctly, as shown in the blowup in Diagram "3".
- Step 4:** Once the Grim Reaper is assembled, the Reaper's Hood can be placed over the skull and secured in place with Hook and Loop tabs, as shown in the blowup between Diagram "3" and "4". The poseable wire arms and the costume can be adjusted to give the Grim Reaper a more sinister look.
- Step 5:** To assemble the Grim Reaper's Scythe, connect the 4-Support Rods together and then place the Scythe "B-2" into place, attach the scythe's other end into the "Scythe's Holder" is located on left foot, as shown in Diagram "5" and "4".

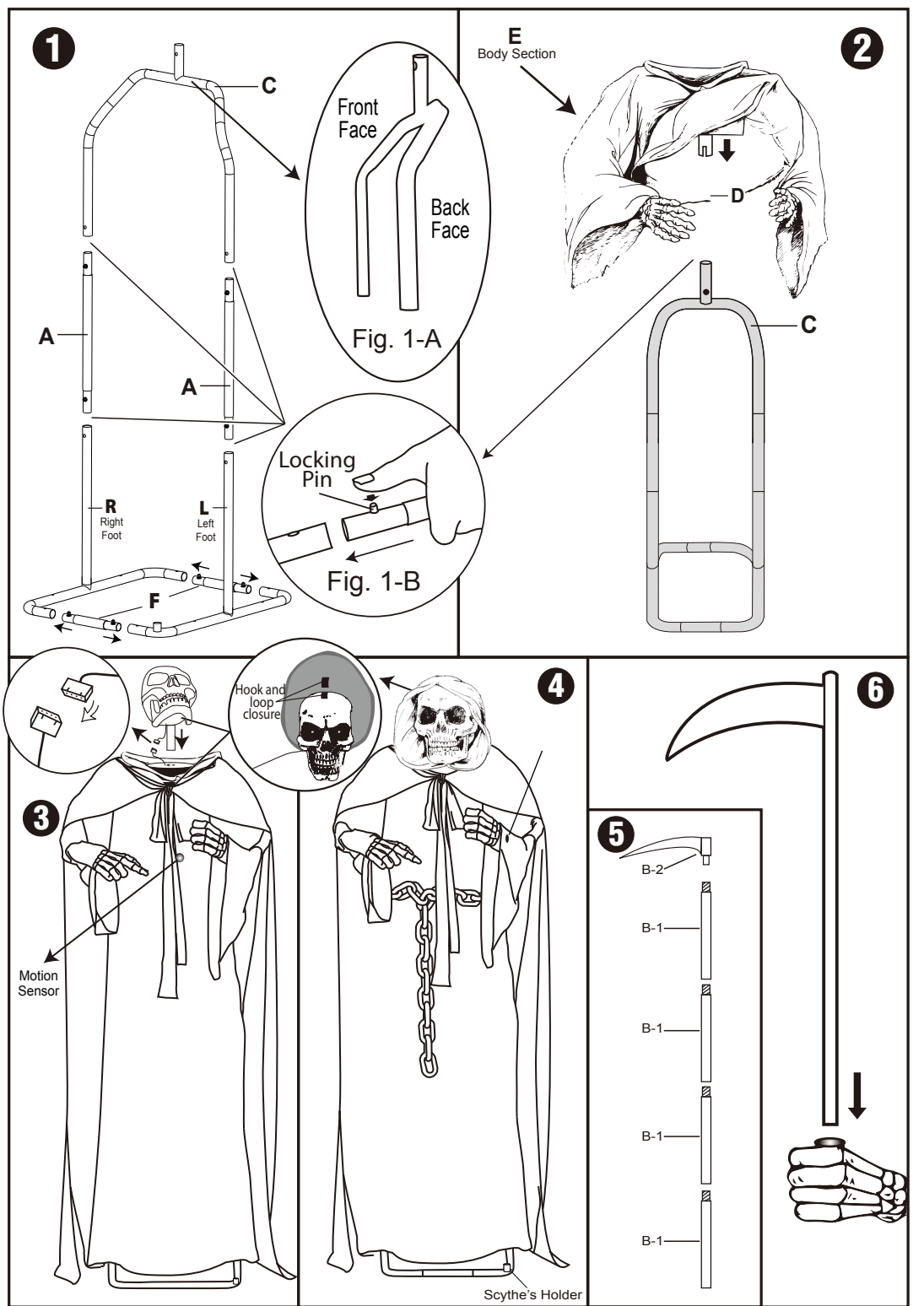
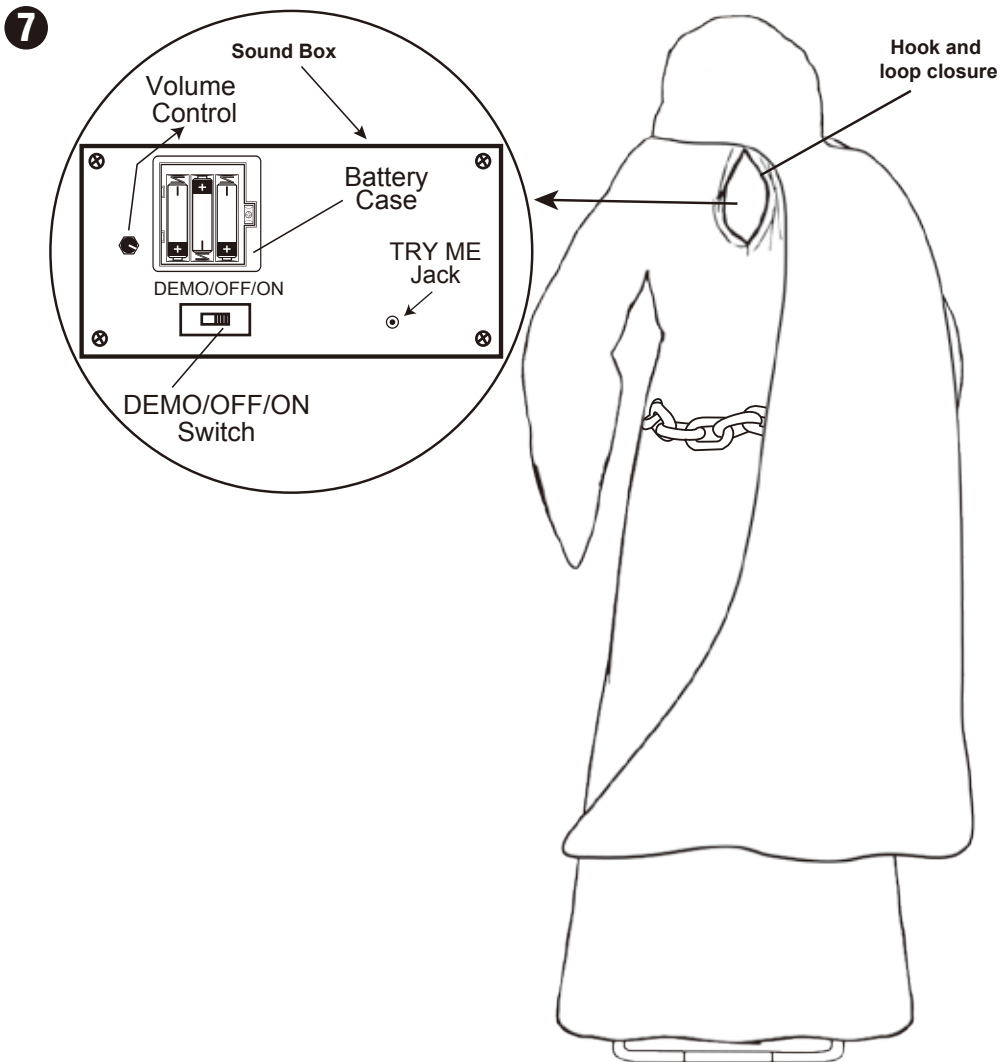
Step 6: The assembled Scythe can now be attached through the slot located in the Grim Reaper's Left Hand, as shown in Diagram "6".

Step 7: You can adjust the poseable wire arms and the costume in order to give the assembled character a more sinister look.

BATTERY REPLACEMENT & ITEM FUNCTION:

Battery-powered. Requires 3 "AA" batteries, sold separately.

- Remove the battery case cover, which is located on the back of the upper body section. To access the battery compartment, open the hook and loop closure and, using a small screwdriver, unscrew the safety screw and then remove the battery compartment cover (as shown in the below diagram).
- Clean the battery contacts and also those of the device prior to battery installation.
- Insert 3 new "AA" batteries with correct polarity and replace the cover and the safety screw.
- The DEMO/OFF/ON switch is located on the battery case. Place the switch into the "ON" position to activate the "Motion Sensor" function. When activated, the Reaper will come to life. (Note: The "Motion Sensor" is activate at angle is 120° and the detection zone is 3.3 Feet to 4.9 Feet). Place the Switch into the "DEMO" position for in-store "Try-Me" feature and press the "Try-Me" button to see and hear a short demonstration (Try Me button is not included). Place the Switch into the "OFF" position and remove the batteries when not in use.
- Replace batteries if the movement becomes slow, LED's become dim or sound is distorted or faint.



BATTERY USAGE:

ADULT SUPERVISION IS RECOMMENDED WHEN CHANGING BATTERIES.

- Do not mix old and new batteries.
- Do not mix alkaline, standard (carbon-zinc) or rechargeable (nickel-cadmium) batteries.
- Alkaline batteries are suggested for longer life.
- Exhausted batteries are to be removed from the product.
- Dispose of exhausted batteries with care.
- Do not dispose of batteries in fire, batteries may explode or leak.

CAUTION: Please remove batteries if their power is consumed or if the product is to be left unused for a long period of time.

RECYCLE YOUR BATTERIES: To help protect our environment, we recommend that all batteries be recycled. You can find a local recycling center by going to: <http://earth911.com/hazardous/single-use-batteries/> Or, in the United States call 1-800-CLEANUP for a recycling location near you.

SAFETY INSTRUCTIONS:

- All cautions in these operating instructions should be followed completely.
- Do not use near water; such as bathtub, laundry tub, kitchen sink, wet basement or swimming pool, etc.
- Do not display figure near any heat source such as radiators, stoves, fireplaces, etc.
- Display should be serviced by a qualified service person only. Do not attempt to service this unit beyond what is described in the operating instructions.
- Take extra care when displaying any figure that may contain small parts around small children.
- Use of this decoration should always be supervised by an adult.
- Remove batteries when not in use.

WARNING: Changes or modifications to this unit not expressly approved by the party responsible for compliance could void the user's authority to operate the equipment.

NOTE: This equipment has been tested and found to comply with the limits for a Class B digital device, pursuant to Part 15 of the FCC Rules. These limits are designed to provide reasonable protection against harmful interference in a residential installation. This equipment generates, uses and can radiate radio frequency energy and, if not installed and used in accordance with the instructions, may cause harmful interference to radio communications. However, there is no guarantee that interference will not occur in a particular installation. If this equipment does cause harmful interference to radio or television reception, which can be determined by turning the equipment off and on, the user is encouraged to try to correct the interference by one or more of the following measures:

- Reorient or relocate the receiving antenna.
- Increase the separation between the equipment and receiver.
- Connect the equipment into an outlet on a circuit different from that to which the receiver is connected.
- Consult the dealer or experienced radio/TV technician for help.

04252018_2006184

READ CAREFULLY & RETAIN FOR FUTURE REFERENCE!