

VICTORY BRACKET

Installation Guide and Warranty Information



SNYDER
INNOVATIONS

Multiple Applications

The Victory Bracket is a multi-functional bracket designed to offer superior support for countertops, floating vanities, floating tables, shower benches, and more.

The unique ribbed design of the Victory Bracket creates strength beyond that of bulkier, more expensive brackets, while still providing low-profile support.



Tools + Materials Required

- Phillips screw driver
- Drill and 1/8" drill bit
- Router
- Wood chisel
- Caulk
- 3/4" wood screws

Bracket Quantity Determination

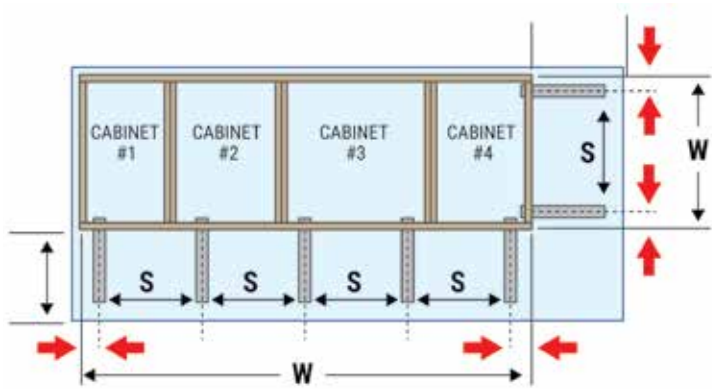
You will need one bracket every 12-18". The chart below gives bracket requirements for countertops of various widths.

Width	# of Brackets
24 - 28"	2
29 - 48"	3
49 - 68"	4
69 - 88"	5
89 - 108"	6

Bracket Spacing Calculation

The two outer brackets should be placed 3" from the end or corner of the countertop. The spacing between brackets can be determined using the formula below:

$$\text{Spacing (S)} = \frac{\text{Width (W)} - 6}{\text{\# of Brackets} - 1}$$



Legend

- Bracket
 Distance to End/Corner
 W Width
S Spacing

Bracket Size Selection

The Victory Bracket is designed to support overhangs between 8" and 20". The wall thickness must be between 3/4" and 4". If necessary, attach plywood to inside of the cabinet wall to meet the minimum thickness requirement.

When mounting behind the cabinet or structural wall, the chart below can be used to find the correct bracket size for your countertop.

		Overhang Length						
		8"	10"	12"	14"	16"	18"	20"
Wall Thickness	3/4"	8"	8"	10"	12"	12"	14"	16"
	2"	8"	10"	10"	12"	14"	16"	16"
	3"	10"	10"	12"	14"	14"	16"	N/A
	4"	10"	12"	12"	14"	16"	16"	N/A

When mounting externally, subtract 2" from your overhang length and select the closest bracket size.

Internal Mounting Options

The Victory Bracket can be mounted inside a cabinet or structural wall in a variety of ways.

Option 1: Mount to Cabinet

wall thickness usually $\frac{3}{4}$ " to 2"



Option 2: Single Level, Wall Mount

wall thickness usually 4"

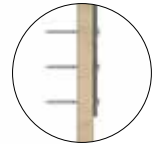
Option 3: Two Level, Wall Mount

wall thickness usually 4"



Option 1A: Mounting Bracket to Back or Side of Cabinet

- 1 - Notch top wall $\frac{1}{2}$ " by $2\frac{1}{8}$ ". Cut $\frac{1}{2}$ " radius on inside wall.
- 2 - If mounting to side of cabinet, use a jigsaw to cut a slot at least $\frac{1}{2}$ " by $2\frac{1}{8}$ " in any support that obstructs the bracket's fit.
- 3 - Using bracket as a template, mark and drill $\frac{1}{8}$ " pilot holes $\frac{1}{2}$ " deep.
- 4 - Make sure bracket fits tightly on wall surface.
- 5 - Attach bracket to wall using $\frac{3}{4}$ " wood screw in each hole.
- 6 - Install countertop and apply caulk along sides of bracket



Internal Mounting Options continued

Option 1B: Mounting Bracket to Front of Cabinet with Doors

Reference the numbers below with the diagram

- 1 - If there is not a 2" wide surface to mount bracket on front wall, a 1"x3"x7" piece of wood can be mounted to the cabinet sidewall several inches away from the front face. The distance from the front face to the back side of 1"x3"x7" becomes the wall thickness when sizing the bracket.
- 2 - Attach each bracket to 1"x3"x7" piece of wood with wood screws.
- 3 - Fit-check the bracket on sidewall and mark the top wall of front cabinet where each bracket is located. Notch top $\frac{1}{2}$ " by $2\frac{1}{8}$ " at each location.
- 4 - Attach 1"x3"x7" to sides of cabinet with wood screws. Top of wood should align with notch in cabinet wall.
- 5 - Install countertop and apply caulk along sides of bracket under countertop.

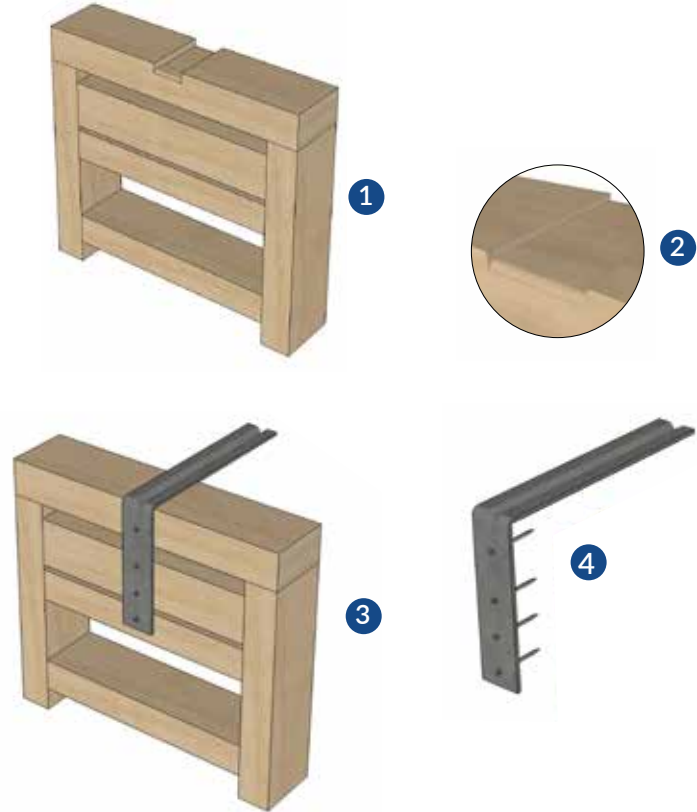


Internal Mounting Options continued

Options 2 and 3: Mounting Bracket to Wall

Reference the numbers below with the diagram

- 1 - Install 2x4 cross braces between wall studs to support bracket. The bracket can be mounted on stud or any location on cross braces. Use bracket as template to locate cross braces.
- 2 - If a single-level countertop, notch top of 2x4 cap $\frac{5}{8}$ " by $2\frac{1}{8}$ ". Cut $\frac{5}{8}$ " radius on inside wall. If two-level countertop, make additional notches on back of wall $\frac{5}{8}$ " deep by $2\frac{1}{8}$ " so backsplash or finished surface can cover bracket.
- 3 - Make sure bracket fits tightly on wall surface.
- 4 - Attach bracket to wall using a $\frac{3}{4}$ " wood screw in each hole.
- 5 - Install countertop and apply caulk along sides of bracket under countertop.



External Mounting Options

The versatile Victory Bracket can also be mounted externally in a variety of ways.

- 1 - Install bracket after countertop is in place.
- 2 - If mounting to a structural wall, be sure to attach brackets to the wall studs or a minimum ¼" thick backing material. Do not mount bracket to drywall alone.
- 3 - Make sure bracket fits tightly on wall surface and against bottom of countertop.
- 4 - Using bracket as a template, mark and drill ⅛" pilot holes ½" deep.
- 5 - Attach bracket to outside of wall using a ¾" wood screw in each hole.
- 6 - Apply caulk along sides of bracket under countertop.

Option 1: Mount to Cabinet

wall thickness usually ¾" to 2"



Option 2: Single Level, Wall Mount

wall thickness usually 4"

Option 3: Two Level, Wall Mount

wall thickness usually 4"



Warranty Information

CONTACT INFORMATION

If you have questions about bracket sizing or number of brackets for your specific countertop overhang, please send a diagram of your countertop along with a list of questions to info@snyderinnovations.com.

INSTRUCTIONS DISCLAIMER

Snyder Innovations, Inc. ("SI") intends to make these installation instructions accurate and complete. However, SI makes no claim that the information contained herein addresses all conceivable details, conditions or variations, nor does it provide for every possible contingency in connection with the installation or use of this product. The information contained in this document is subject to change without notice or obligation of any kind.

LIMITED WARRANTY

Snyder Innovations, Inc. ("SI") warrants that the Victory Bracket will be free from defects in material and workmanship under normal and proper usage for a period of five (5) years from the date of purchase. If the warranty in the bracket packaging differs from the warranty policy posted at snyderinnovations.com, the policy at snyderinnovations.com shall be considered the most current and in effect.

The Victory Bracket has an intended purpose. If used outside of that purpose, the product will not be warranted and SI shall not be held responsible for any damage that may occur due to accident, abuse, misuse or negligence. The following products are not covered under this warranty: (1) brackets that have been altered, modified, neglected or poorly maintained; (2) brackets that are purchased in used condition, not in original packaging, or from an unauthorized dealer or distributor; (3) brackets that have been

damaged during transit or shipping.

The following damages are not covered under this warranty: (1) damage to persons or property due to improperly installed or repaired brackets as recommended by SI; (2) damage from causes other than defects in materials and workmanship such as a purchaser's or installer's lack of skill, competence or experience.

SI's obligation under this warranty is limited to one the following at the sole option of SI: (1) replacement of the defective bracket; (2) supply of equivalent goods; (3) the payment of the cost of replacing the bracket; or (4) The payment of the cost of having the bracket repaired.

SI's sole obligation and your exclusive remedy under this warranty shall be limited to the cost of such repair or replacement. SI's aggregate liability, if any, in damages or otherwise, shall not exceed the purchase price paid to SI by the purchaser for the product which gave rise to the warranty claim. This warranty does not cover the repair or replacement costs of any property other than the defective bracket.

To the extent permitted by law, this warranty and remedies set forth above are exclusive and in lieu of all other warranties, remedies and conditions, whether oral or written, statutory, express or implied. As permitted by applicable law, SI specifically disclaims any and all statutory or implied warranties, including, without limitation, warranties of merchantability, fitness for a particular purpose and warranties against hidden or latent defects. If SI cannot lawfully disclaim statutory or implied warranties then to the extent permitted by law, all such warranties shall be limited in duration to the duration of this express limited warranty and to repair or replacement service as determined by SI in its sole discretion. No SI reseller, agent, or employee is authorized to make any modifi-

cation, extension, or addition to this warranty. Except as provided in this warranty and to the extent permitted by law, SI is not responsible for direct, special, incidental or consequential damages however caused.

To make a claim under this limited warranty, contact SI by email to info@snyderinnovations.com. SI must be notified in writing of any claim under this warranty within 45 days of any claimed lack of conformity of the product. All warranty claims must be accompanied by a legible copy of the original receipt showing the date and cost of the purchase along with the purchaser's name, address and phone number.

This warranty will be interpreted pursuant to the laws of State of Florida. By purchasing this product, the buyer submits to the exclusive jurisdiction of the State of Florida in regard to any disputes that may relate to the product or this warranty. If any provision of this warranty, or any portion thereof, is held to be invalid and unenforceable, then the remainder of this warranty shall nevertheless remain in full force and effect. Any otherwise void, invalid or unenforceable section, term or provision of this warranty shall be so construed, or reformed, as to alter, amend or change any such term, provision or condition to the extent necessary to render it valid, lawful and enforceable, while also giving maximum effect to the parties' originally intended purpose or result, short of creating any void, invalid or unenforceable provision, term or condition.

This warranty gives you specific legal rights and you may also have other legal rights which vary from state to state. Some states do not allow limitations on how long an implied warranty lasts, so the above limitations may not apply to you. Some states do not allow the exclusion or limitation of incidental or consequential damages, so the above limitations or exclusions may not apply to you.