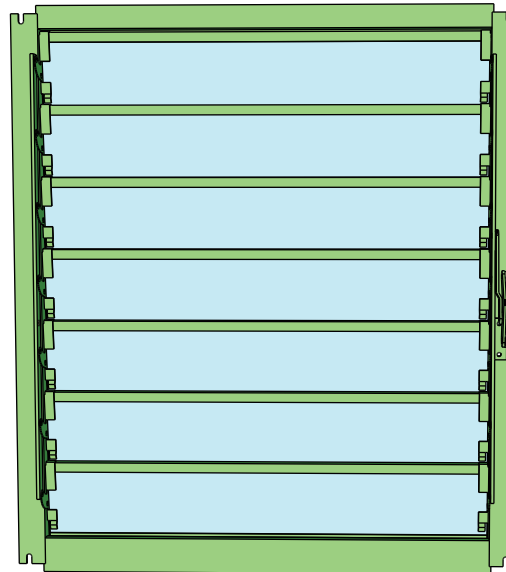




# GRANDIO®

G R E E N H O U S E S

Model **GRA-LVR**

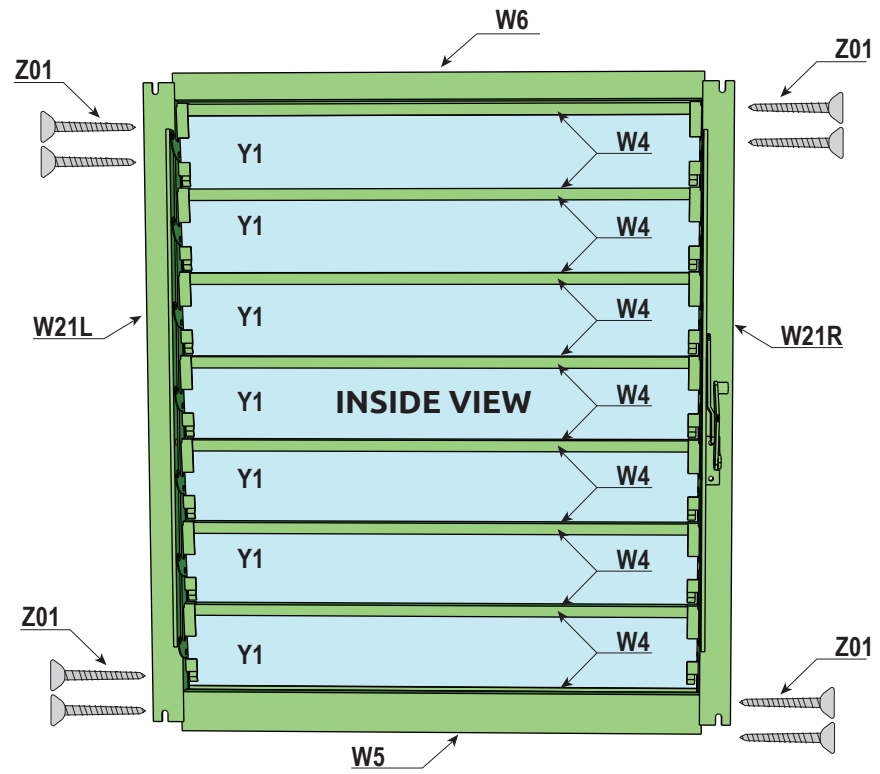


## GREENHOUSE LOUVER WINDOW INSTALLATION MANUAL

© 2015 Grandio Greenhouses, Backyard Living Source Inc. All rights reserved  
September 15, 2015 Version

# LOUVER WINDOW PARTS LIST

PICTURE	PARTS NO.	DESCRIPTION	QTY
	W21R	680 mm	1
	W21L	680 mm	1
	W5	555 mm	1
	W6	555 mm	1
	W4	545 mm	14
	Y1	543 mm * 100 mm	7
	S05	M5*12	2
	S04/ML01	M6*14	5
	Z01	#7 - 3/4"	9

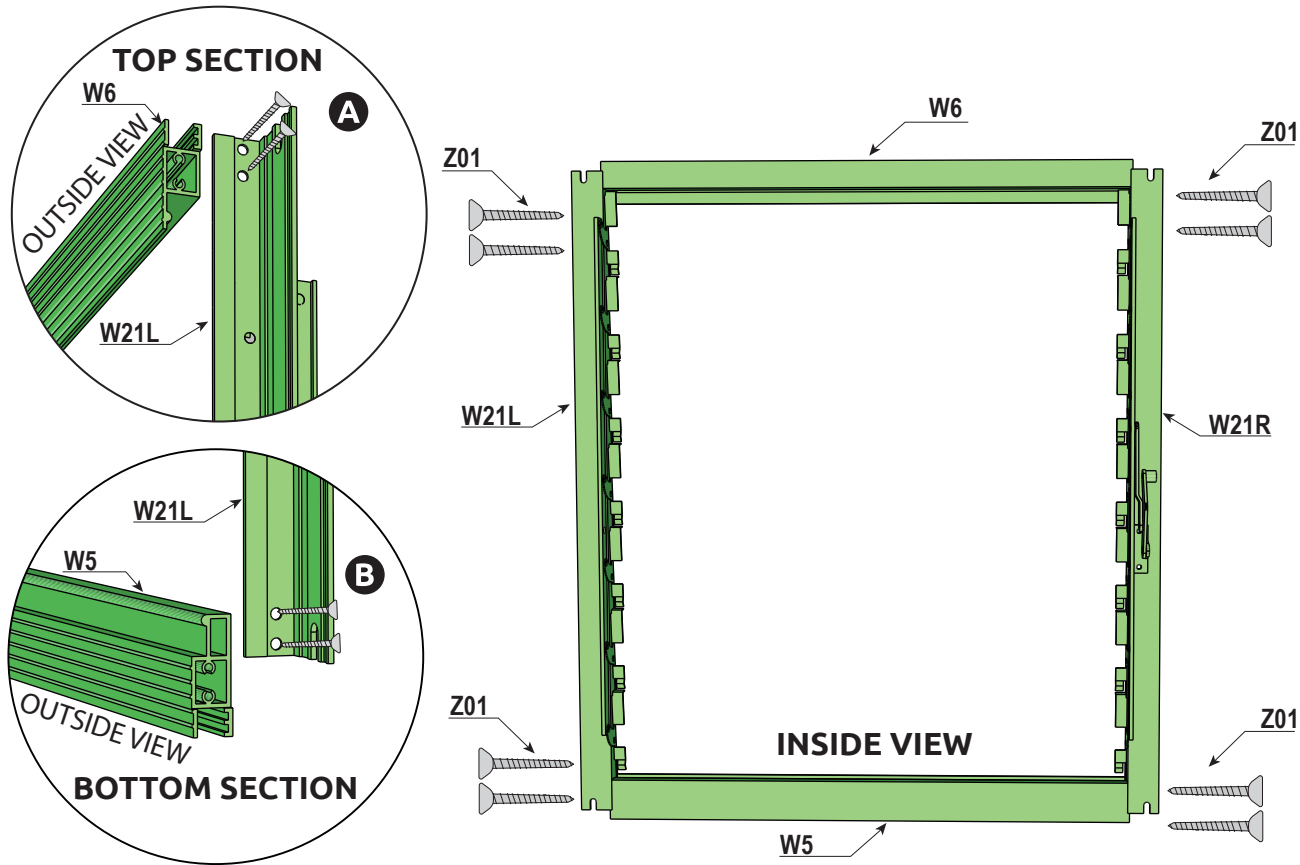


**NOTE:** Louver may be installed during construction or on a fully assembled Grandio Greenhouse. If installing during construction, it is recommended to place the louver while installing the panels in your desired location. If installing after construction, you will need to cut the panel of choice out of the greenhouse. A utility blade or jigsaw is recommended.

# LOUVER WINDOW INSTALLATION

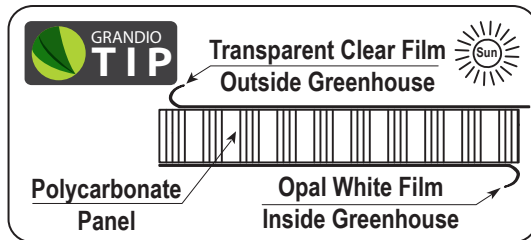
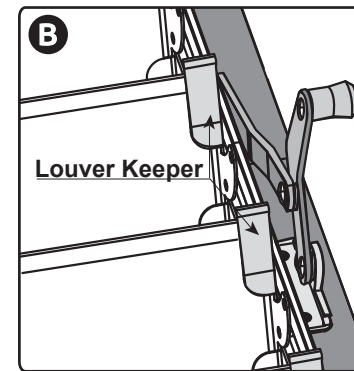
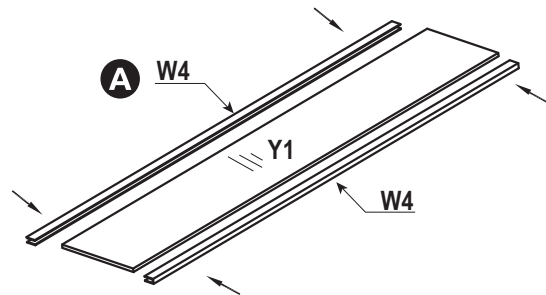
**1.1** For the louver assembly, you will need the **Z01** screws, (1) top rail **W6**, (1) bottom rail **W5**, side jambs **W21L** and **W21R** (note handle orientation).

**1.2** Place the top rail **W06** on the side jamb of the louver **W21L** secure with the (2) **Z01** self tapping screws, see **A**. Align the **W6** with the **W21R** secure with (2) **Z01** self tapping screws. Repeat this process with the bottom rail **W5** using the (2) **Z01** screws, see **B**. Please note that the handle is always on the right side when the orientation is correct.



**1.3** Attach the **W4** aluminium channel to the **Y1** panel **A**. Pay attention to which side should face the sun, it is recommended to mark a little “x” on a corner of the side that should face the sun. Be sure to insert so the panel faces up or will lay outward when closed.

**1.4** When installing the blades into their final position you may open the keeper a little with your fingers or gently with a screw driver, then gently squeeze the aluminium louver keeper on each side of the louver frame so it holds the blades in place firmly. See **B**.



**GRANDIO TIP** Make sure the UV coated side of the panel faces outward as indicated on the panels. Avoid placing the polycarbonate panels in the sun or near plants until fully assembled.

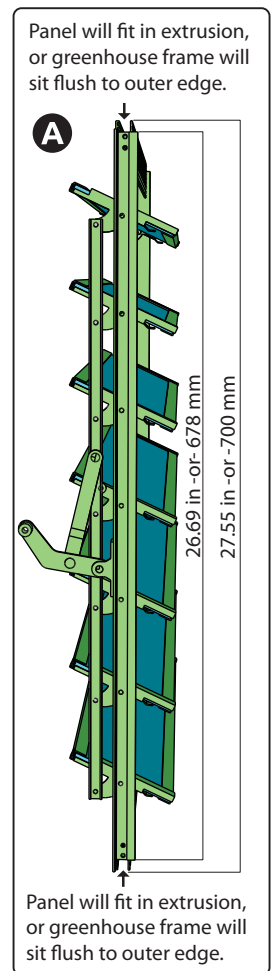
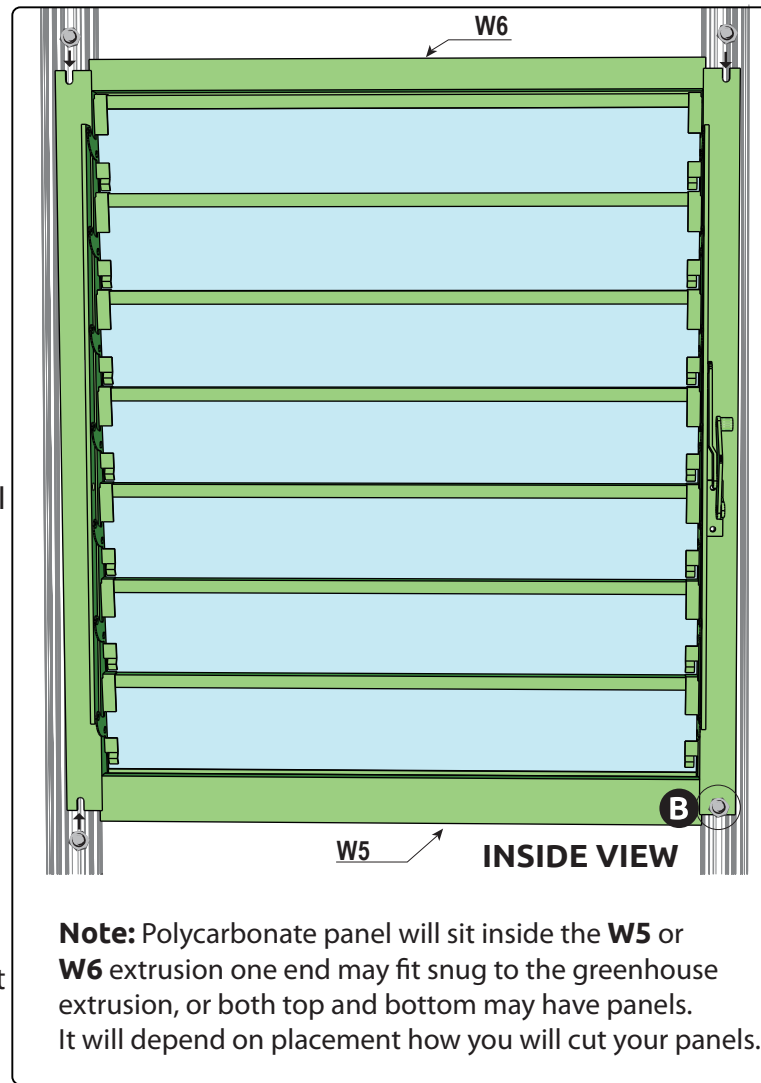


**1.5** You will need to cut the polycarbonate panel to fit the louver into the desired section of the greenhouse wall. Note that the bottom **W5** or top **W6** will slide over the panel to lock louver into place. We recommend laying the polycarbonate panel flat on a piece of cardboard and cutting it using a utility knife and a straight edge ruler. If already assembled carefully cut the panel out leaving that allowance for the louver to sit on the polycarbonate panel. Be very careful, measure twice and cut only once! See **A** for helpful measurements to be sure you cut the panel properly for your placement.

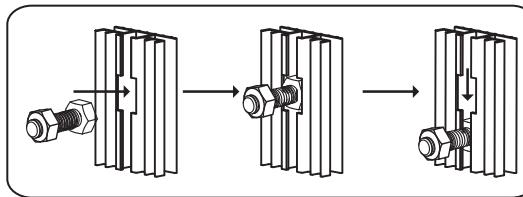
**1.6** If you are going to install an automatic opener, you will want to do so now. Follow the directions included with your auto opener.

**1.7** Place (4) pre threaded **S04/ML01** nut and bolt combos into the tracks where you are going to install your louver. Place the louver into the opening of the greenhouse you have prepared, set louver into place, align the **S04/ML01** nut and bolt combos and secure with (4) pre threaded and pre-inserted bolts provided. See **B**.

**1.8** The louver handle or auto opener should be positioned on the right hand side of the louver when looking at the louver from the inside of the greenhouse.



**GRANDIO TIP** **BOLT INSTALLATION TIP:** Locate all nuts and bolts, pre thread and place in the groove of the extrusion to make installation easier. Move up or down for exact placement.





**GRANDIO**<sup>®</sup>  
GREENHOUSES

**2015 Grandio Louver Window**

**GREENHOUSE USER MANUAL  
KEEP IN A SAFE PLACE FOR REFERENCE**

CONTACT US IF YOU NEED HELP  
OR  
HAVE MISSING OR DAMAGED PARTS

**GRANDIOGREENHOUSES.COM**

**BACKYARD LIVING SOURCE, INC.  
9543 W. EMERALD ST., SUITE 101  
BOISE, ID 83704  
1-866-448-8231**