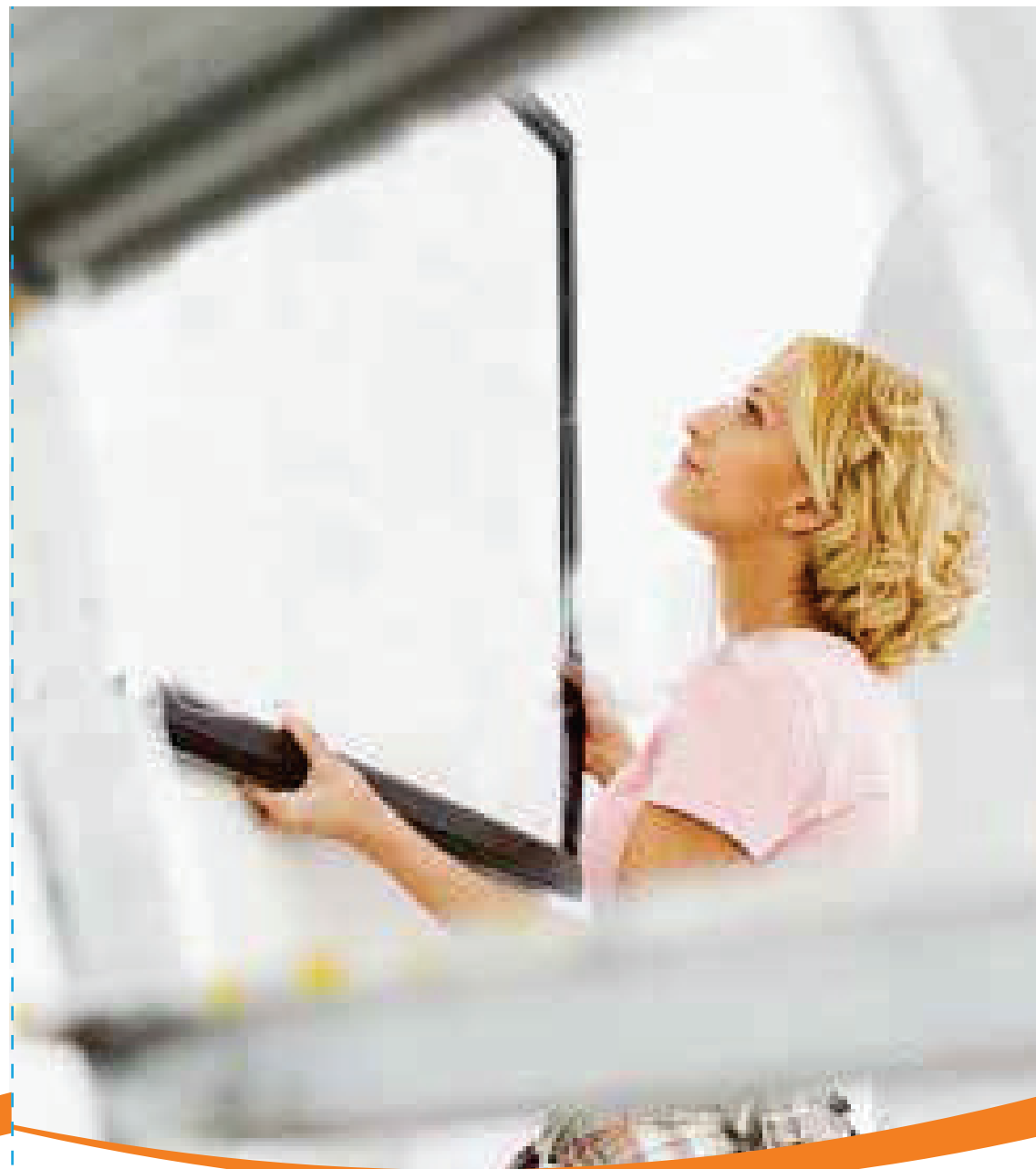



eucatex
www.eucatex.com.br



 /EucatexOficial

 @Eucatex_Oficial

 @Eucatex_Oficial

Decorative Panel
Instalation


eucatex

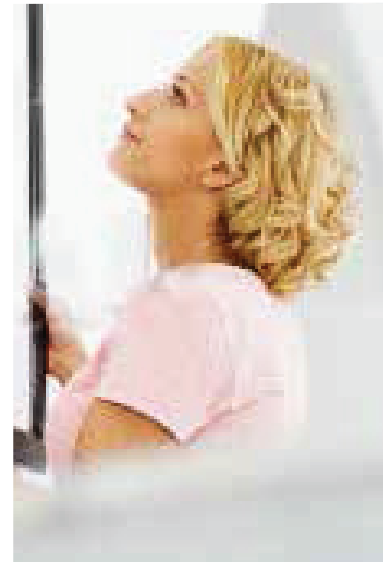
Decorative Panel Instalation

Congratulations, you are accept the linha melamina de painéis Eucafibra BP possui padrões e acabamentos que acompanham as tendências do mercado, permitindo elegantes composições, entre os padrões e com a linha Lacca AD.

As diferentes texturas apresentadas proporcionam diversas experiências ao toque, valorizando ainda mais o aspecto natural da madeira.

As diferentes texturas apresentadas proporcionam diversas experiências ao toque, valorizando ainda mais o aspecto natural da madeira.

Os painéis são fornecidos com filme protetor.



Index

- 04 Tools and Supplies for Installation
- 05 Note
- 06 Conditioning Panels
- 06 Wall Preparation
- 07 Adhesive Application
- 07 Spacing between Panels
- 08 Fitting Panels
- 09 Cutting Panels
- 09 Cut -Outs
- 10 Caulk
- 11 Clean up



TOOLS AND SUPPLIES FOR INSTALLATION



Assemble all your tools and supplies before you begin the job.
Here is what you will need for most common wall paneling installations:

- 1- Tape measure
- 2- Level
- 3- Pencil compass
- 4- Hammer
- 5- Padded wooden block (or rubber mallet)
- 6- Power or handsaw (with short fine-toothed blade)
- 7- Carpenter's square
- 8- Chalk line
- 9- Drill
- 10- Adhesive caulking gun
- 11- Eye goggles (must be worn when using any power or hand tools)
- 12- Keyhole saw/miter box
- 13- Tub caulk
- 14- Cloths for clean-up

NOTES

Be sure to read and follow the instructions.

Eucaboard / Eucaplac/ Eucatile paneling is intended for dry interior use only and requires care in handling.

Eucatex paneling should not be used in environments where an accumulation of water, grease, smoke, or other surface contaminants will require frequent cleaning to remove accumulations.

Panels cannot be installed direct-to-studs in mobile homes. Panels cannot be used as ceilings. Panels cannot be nailed against the backing.

When using cleaning materials, experiment with scrap paneling or spot clean in an inconspicuous area. Eucatex is not responsible for any damage caused by non-recommended cleaning methods.

Always check your building code. Panels are Class III fire rated and most panels are only allowed to be installed over a solid wall under most building codes.

Material Safety Data Sheet (MSDS) containing potential physical and health hazard information is available by contacting: Product Safety - eucatexusa@eucatex.net

Care should be taken in installing panels to allow for space between panels and heat producing appliances and ignition sources. Consult your local building code authority for guidelines and requirements.

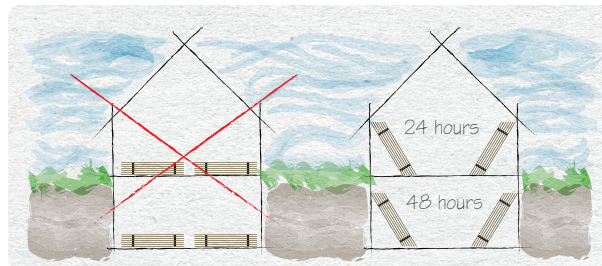
Improper use and/or installation will void the warranty of the products.



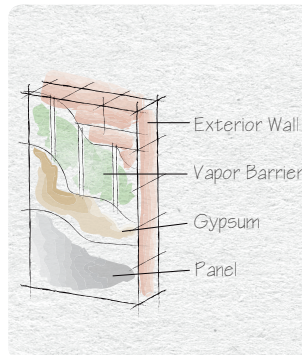
CONDITIONING PANELS

Condition panels by placing them in the room to be paneled 48 hours prior to installation.

Stack the panels on the floor or lean them against a wall, with spacers between each sheet. This allows the room air to circulate around each panel for proper acclimation.



WALL PREPARATION



Installing paneling over existing true walls requires no preliminary preparation. Sanding high spots on the wall is generally about all you have to do.

Panels of thickness of 1/8" must be applied to solid walls only, and above the grade.

Panels of thickness 3/16" or higher may be installed directly to stud frame, above or below grade.

To install Panels directly to the stud, it is necessary to have a solid insulated exterior wall and 4-mil or greater polyethylene vapor barrier behind the studs.

ADHESIVE APPLICATION

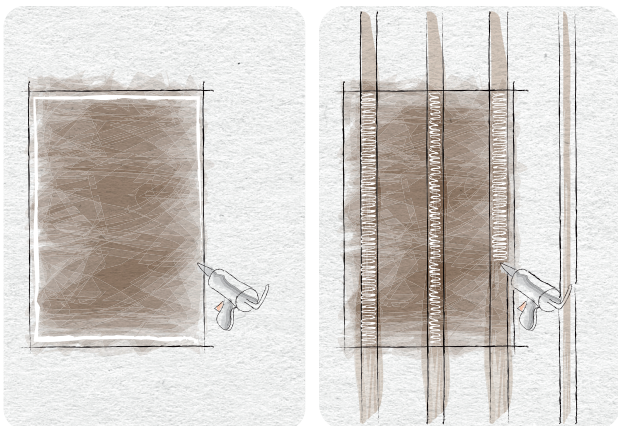
Use high quality adhesive suitable for paneling, be it "Solvent- Based " or "Low - VOC". Be sure to read the adhesive manufacturer's instructions carefully prior to installation, since instructions may vary.

Adhesive may be used to apply paneling directly to studs (if thickness is higher than 3/16") or over existing walls as long as the surface is level, sound and clean. Once the panel is fitted, apply beads of adhesive with a caulking gun in a continuous strip along the top, bottom and both sides of the panel.

On intermediate studs, apply beads 3' long and 6' apart. Over solid backing, apply adhesive in a zigzag pattern between studs.

Use a hammer and padded wood block (or rubber mallet) to set the glued panel in position.

Do not install Panels with Nails against the studs or backing as it will not allow panels to expand/contract and will buckle the panels.



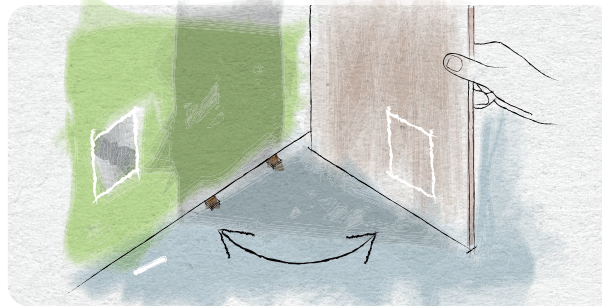
CUT - OUTS

Cut- outs for door and window sections, electrical switches and outlets or heat registers require careful measurements.

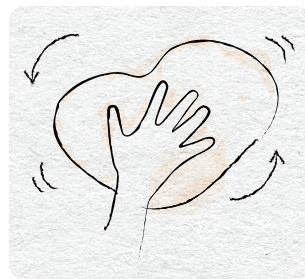
One method is to mark the outlet box with chalk. Then, place the properly cut panel on the wall and tap at the outlet location. This will transfer an image to the back of the panel and indicate the area for cutting.

A 1/4" gap around this area will provide room for spacing and adjustment - the faceplate will cover up the extra space.

On an existing wall, adjust the outlet box to meet panel thickness. Unscrew at the top and bottom, wedge a small paneling scrap at screw locations, and tighten.



CLEAN UP

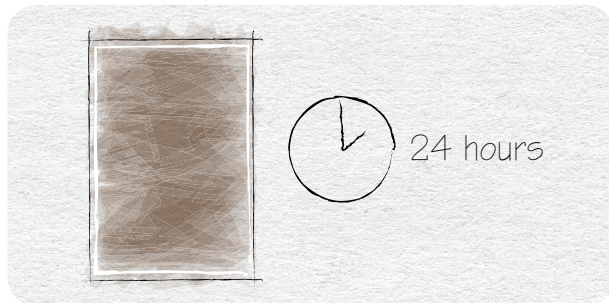


For solvent based adhesive, clean up surface with mineral spirits-dampened rag (do not use lacquer thinner). For low VOC adhesive, wipe off all excess adhesive on the surface with water dampened rag.

Panels may be cleaned when needed with mild soap and water dampened rag. Do not use abrasive cleaners on your new wall panels.

CAULK

Allow adhesive to cure for 24 hours before applying caulk. Use only 100% silicone sealant (not siliconized acrylics) to thoroughly caulk all seams, edges around panels, around and behind all fixtures and in between seams.



SPACING BETWEEN PANELS

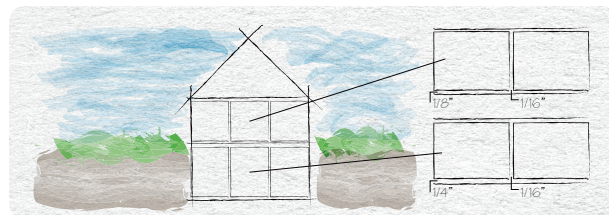
Above Grade:

Allow 1/16" thickness between panels to the left and right - along 8' edge. Use shims to leave 1/8" at the top and bottom of the panels.

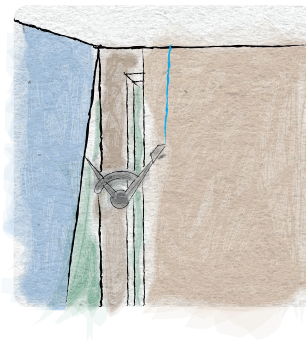
Below Grade:

Allow 1/16" thickness between panels to the left and right - along 8' edge. Use shims to leave 1/4" at the top and bottom of the panels.

DON'T butt panels tightly together TO AVOID BUCKLED PANELS



FITTING PANELS

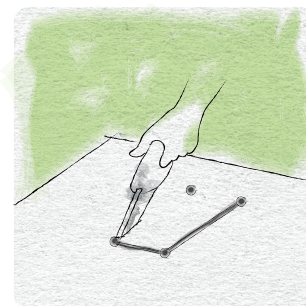


Put the first panel in place and bring to adjacent wall in the corner allowing 1/16" space. Make sure it is plumb and both left and right panel edges fall on solid stud backing.

The panel may have to be trimmed to allow the outer edge to fall on the center of a stud for nailing. Also, on rough walls, or adjoining a fireplace wall, use a pencil compass to mark the panel on the inner edge and then cut on the scribe line to fit around the obstruction.

If you have chosen simulated wood grain panels, take a few minutes to stand the panels side-by-side around the room. Arrange them to achieve the most pleasing balance of color and grain pattern, then number the back of each panel in sequence.

CUTTING PANELS



If measured floor-to-ceiling height is 8' or less, subtract 1/2" from this measurement to allow 1/4" expansion clearance on top and bottom. Transfer these measurements to panels for cutting.

If using a handsaw or table saw, mark and cut the panels face up. If using a portable circular saw or sabre saw, mark and cut panels face down.