

# HOME DECORATORS COLLECTION

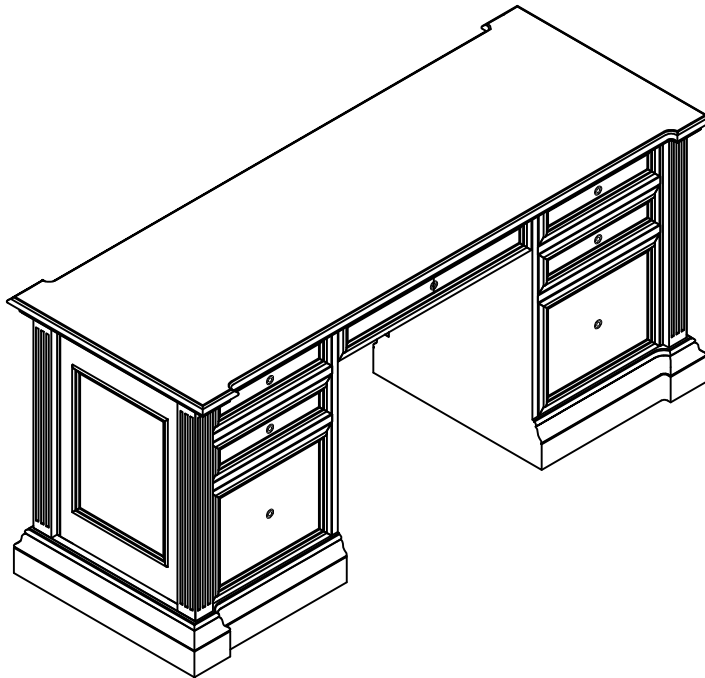
BUFFORD EXECUTIVE DESK

## Assembly Instructions

HDC#:9485100417/418/419 MFG#:B6530W BOX 1/BOX 2/BOX 3

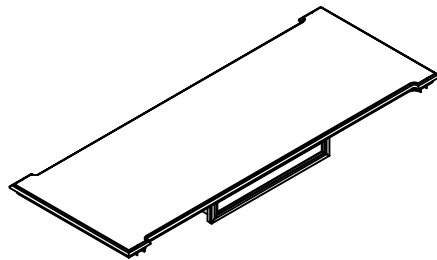
Please read over the instructions; it will be a time-saver in the long run.

Note: before assemble, please be sure to work on a soft flat surface to avoid any damage to the finish.

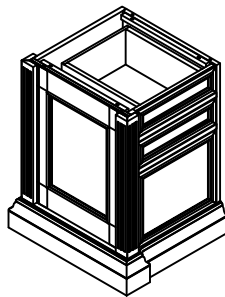


## Parts Check List

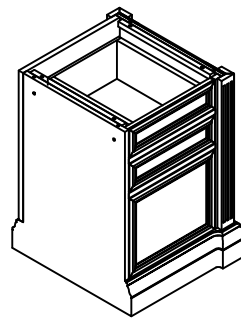
Please remove all the parts carefully from the box. Thoroughly clean all wood surfaces to remove dust and dirt that may have settled onto the finish.



① Top Panel-1



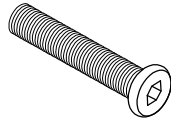
② Left pier-1



③ Right pier-1

## Hardware Check List

Please take all the hardware listed below out of the hardware bag.



**A** Bolt-12  
(Ø1/4"x1-1/4")



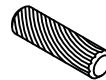
**B** Lock Washer-12  
(Ø1/4")



**C** Flat Washer-12  
(Ø1/4"\*19)



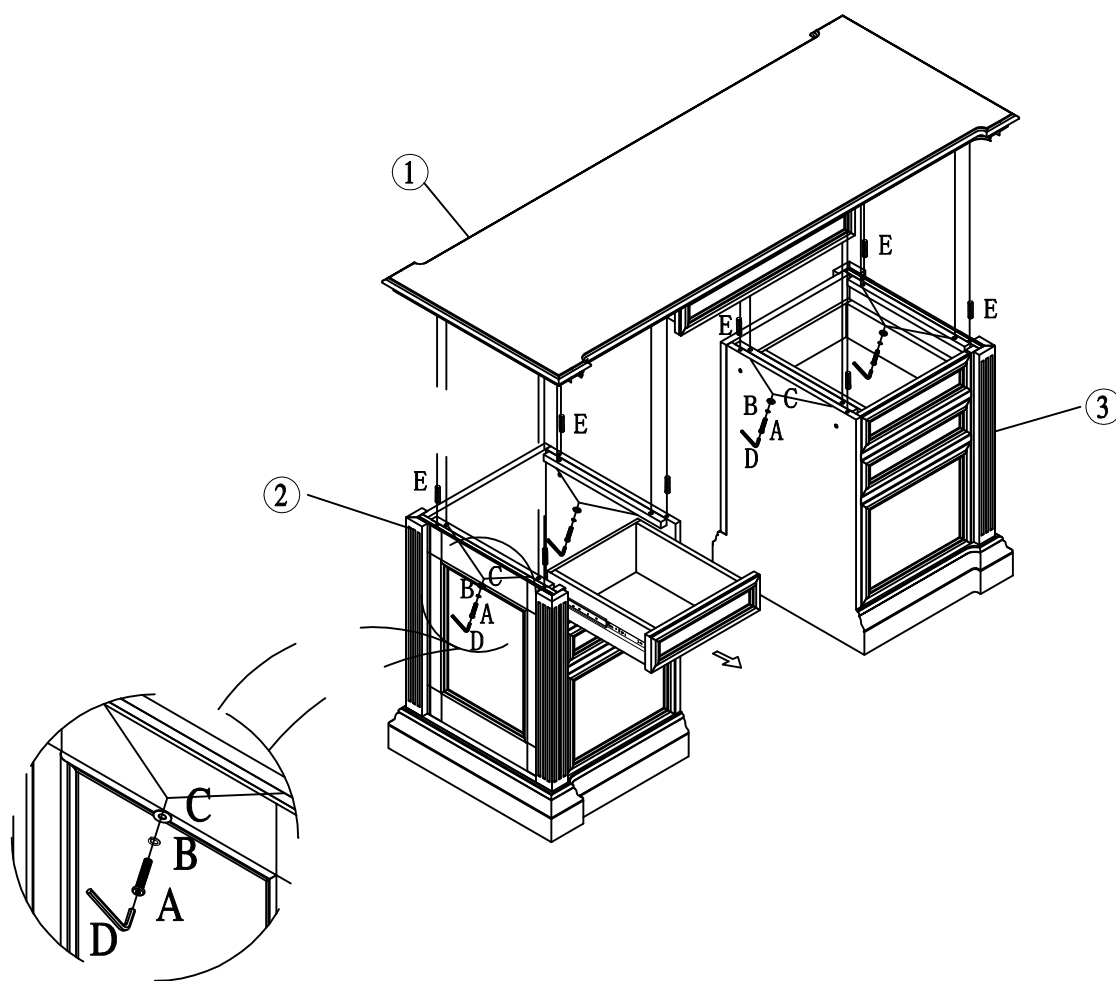
**D** Allen Wrench-1  
(Ø1/4")



**E** Wood Dowel-8  
(Ø8\*30mm)

Step 1. First, remove the drawers on the left and right piers. Now, insert wood dowels (E) into the left pier (2) and right pier (3) as shown. Attach the top panel (1) to left pier (2) and right pier (3) with bolt (A) through lock washer (B) and flat washer (C) by allen wrench (D) as shown.

See figure below:



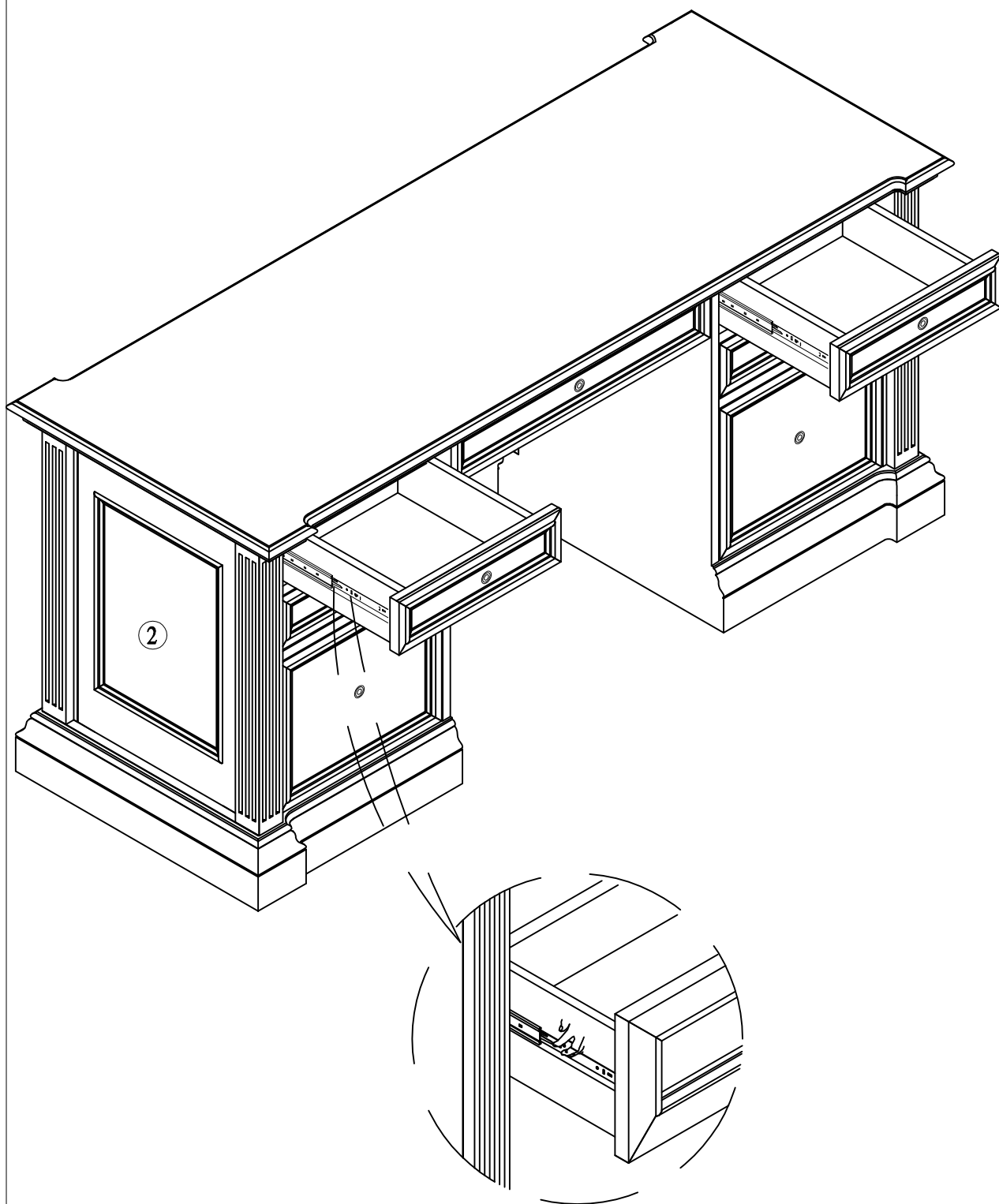
Step 2. Attach the left pier(2) and right pier(3) to the top panel (1) with bolt (A) through lock washer (B) and flat washer (C) by allen wrench (D) as shown.

See figure below:



Step 3. Place the drawers back into the unit as shown.

See figure below:



Step 4. Shelf is screwed in place for shipping. Use a Phillips head screwdriver to remove screws from shelf pins as shown.

