

# ARMITAGE COFFEE TABLE

(MH-TB-823)



## ASSEMBLY INSTRUCTIONS

Do not throw away the packaging material until the assembly is complete.  
To protect finish, assemble this item on a soft surface such as a cardboard or a carpet.  
Until all parts are in place, do not fully tighten all the bolts.

## CARE INSTRUCTIONS

Wipe only with a soft & dry cloth.  
To protect finish, avoid the use of chemicals and household cleaners.  
Any liquid spilled on the furniture should be cleaned up  
immediately with a damp cloth.

# PRODUCT PARTS



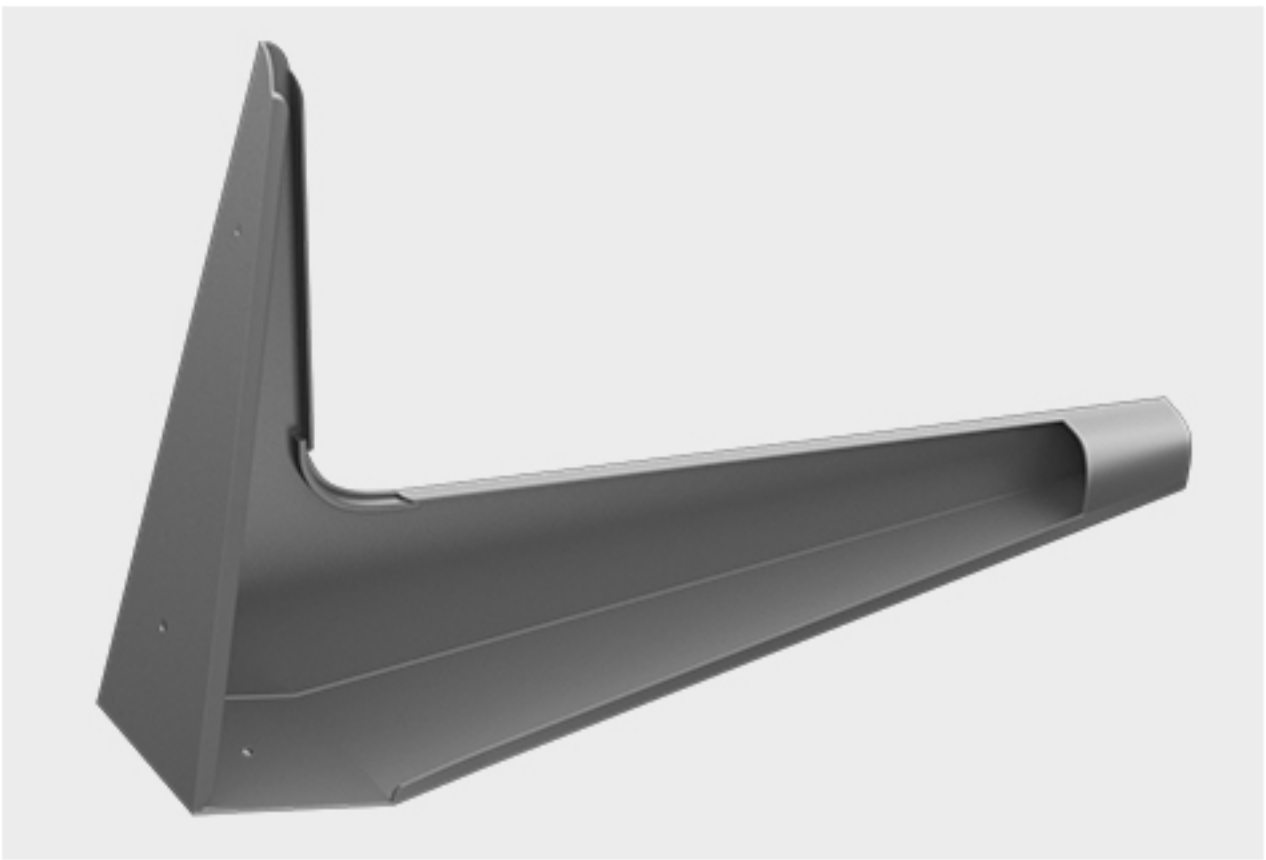
T1



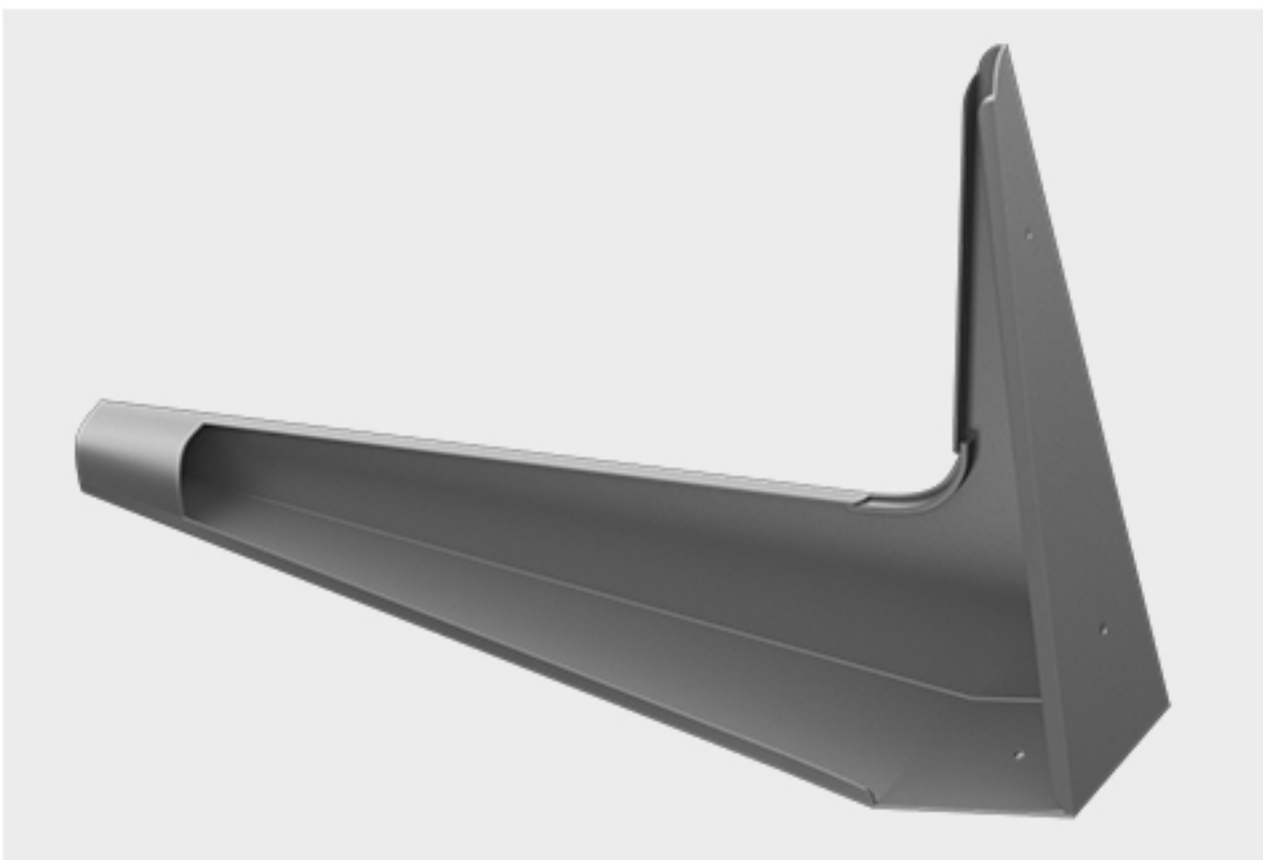
T2  
Wooden Tops



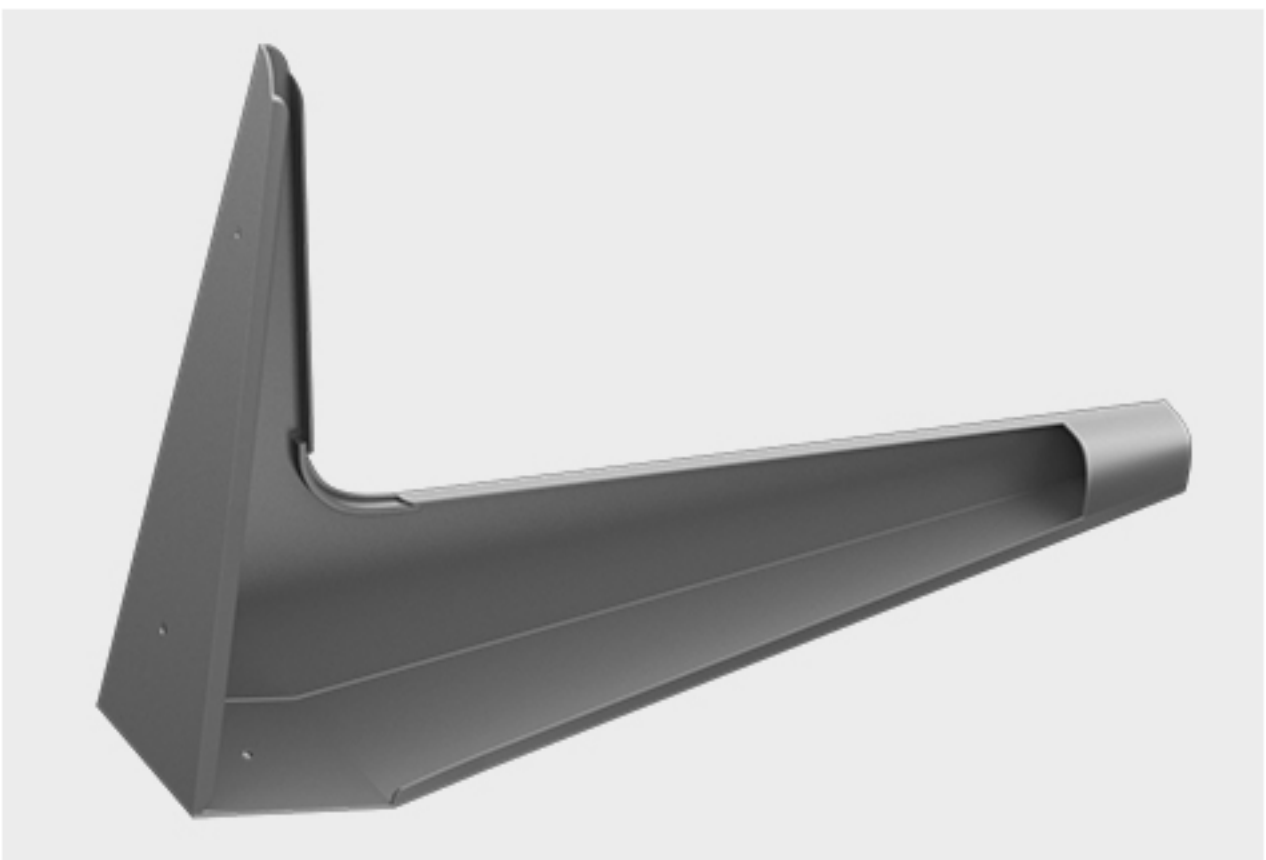
A



B



C



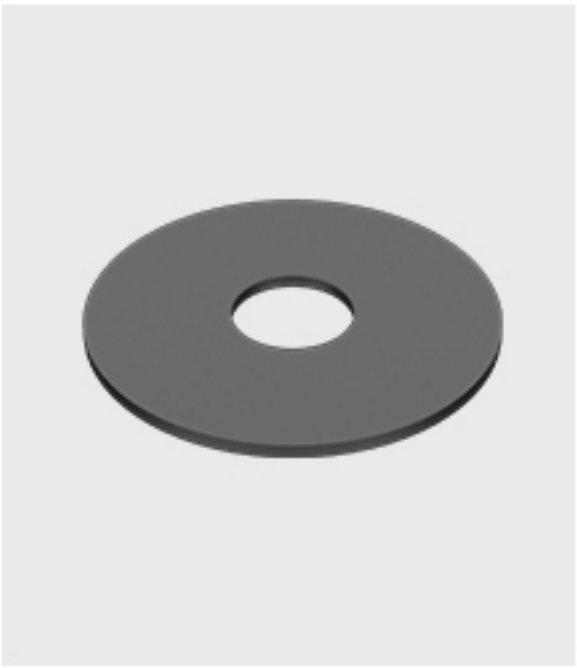
D

Metal Legs

# HARDWARE PROVIDED



E  
Screw  
M6x20mm,  
12x



F  
Flat Washer  
Ø20mmx  
Ø8mm,  
12x

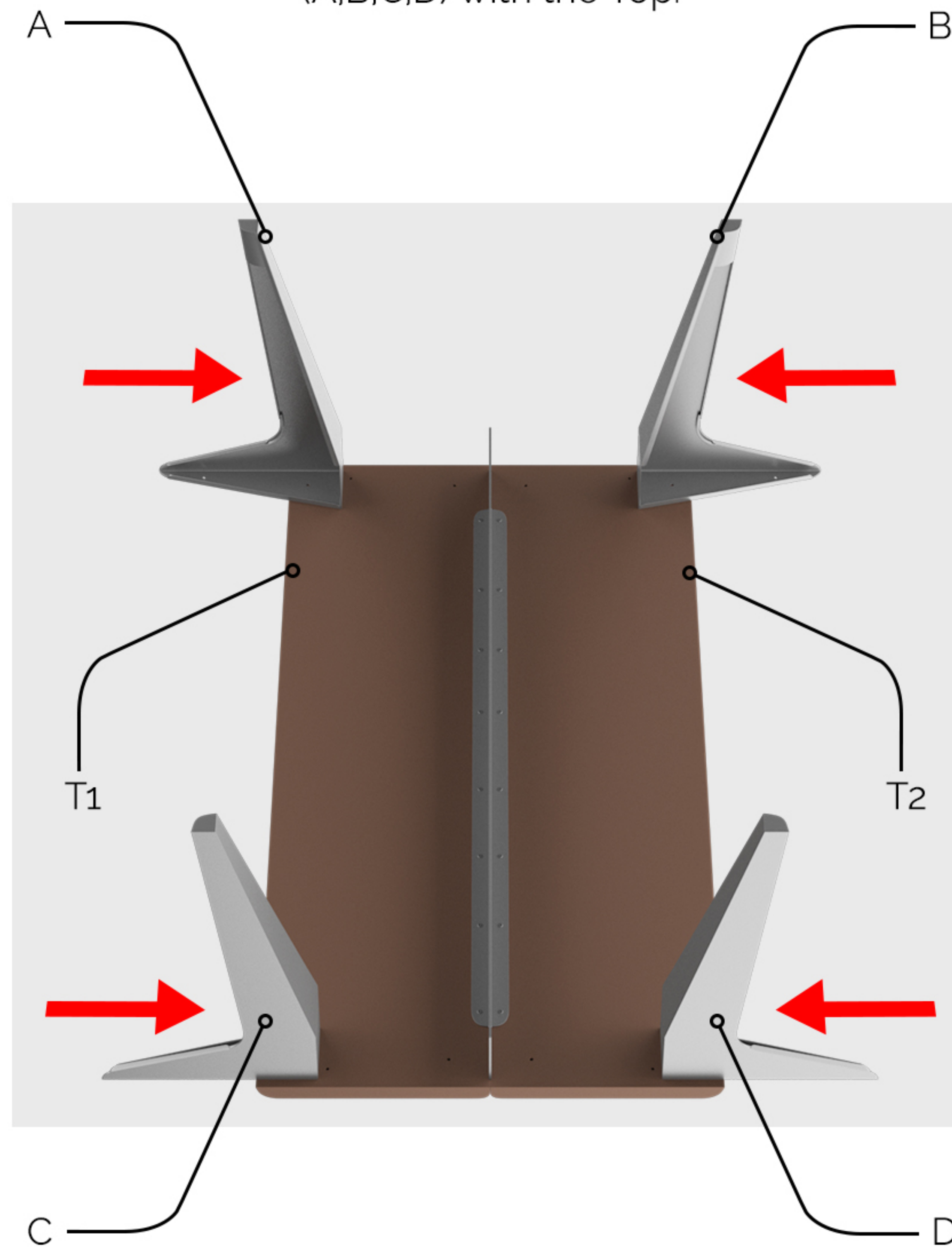


G  
L-Key  
Ø4mmx110mm,  
1x

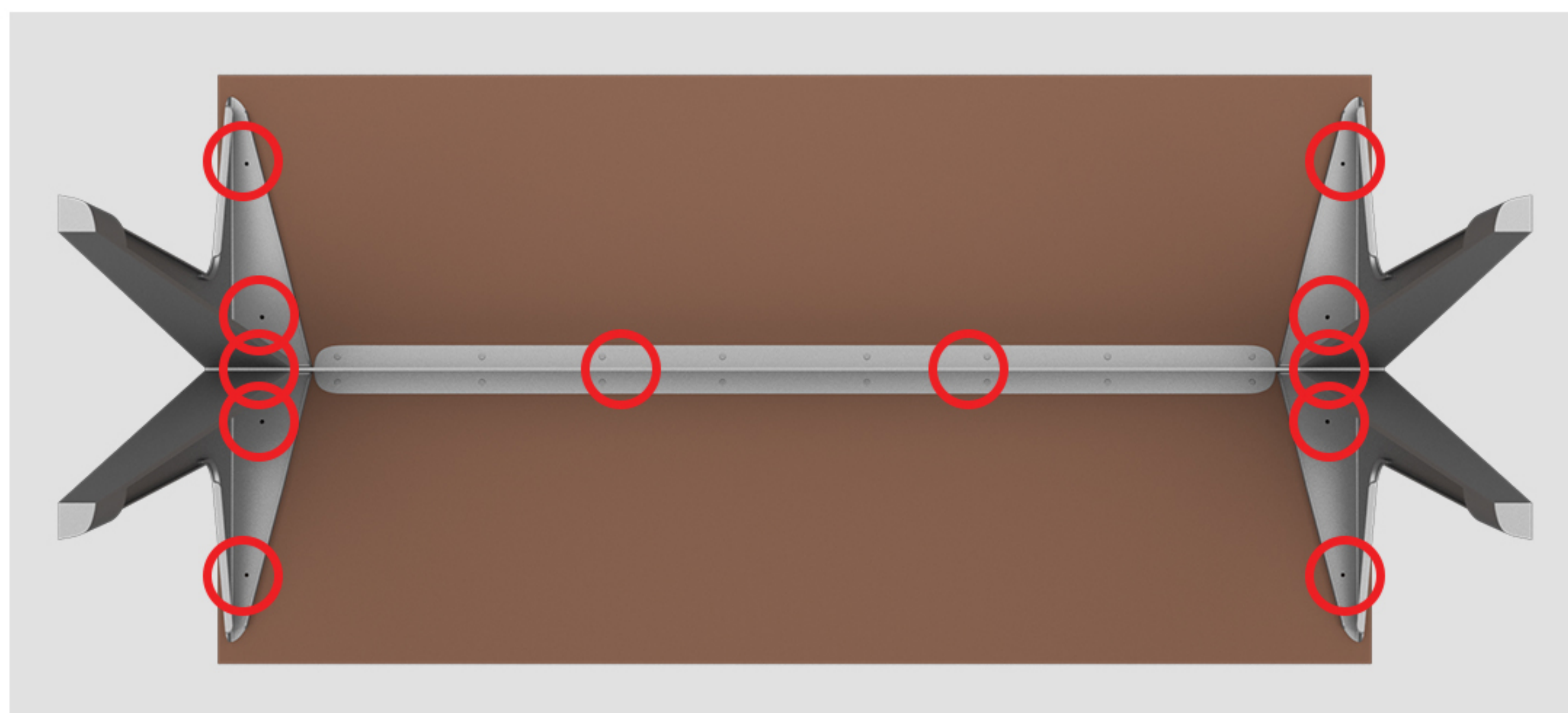


# STEP 1

Turn the Wooden Tops (T1,T2) upside down and put them together as shown in the image below. Then align the Metal Legs (A,B,C,D) with the Top.



Note the highlighted areas in red below to know where to tighten Screws (E) and Washers (F).





## STEP 2

Using the L-Key (G), tighten Screws (E) and Washers (F) on all 12 highlighted areas to secure the Metal Legs (A,B,C,D) to the Wooden Tops (T1,T2).

