

# Transfer 26 Dual+Heat Massage Walk In Bathtub (Wheelchair Accessible)



OLA2652D-L-hD Left Drain



OLA2652D-R-hD Right Drain

Actual Size: 26'' W x 52'' L x 42'' H  
 Shipping Size: 28'' W x 54'' L x 50'' H  
 Shipping Weight: 300lbs.  
 Net Weight: 220lbs.  
 Water Capacity: 90 gal. US (unoccupied)  
                           55-75 gal. US (occupied)  
 Approx. Drain Time: +/- 2 minutes (unoccupied bathtub)  
 at ideal home plumbing conditions  
 Approx. Fill Time: 14 gallons per minute  
 based on in-house water pressure  
 (Disclaimer: Drainage time depends on house drain conditions.)

**Options:**

- Left or Right Hinged Door

**Included Features:**

- % Acrylic Tub Shell:
  - High quality acrylic
  - Excellent color uniformity
  - High Gloss White Finish
  - Fiberglass Reinforced
- &" Low threshold step in 7''
- ' " Stainless Steel Frame with Adjustable Leveling Legs
- (" Seat: 19.5'' W x 19'' H x 19'' L
- )" One (1) front and one (1) end removable access panels
- \*\* Wall mounted stainless steel safety grab bar in plated chrome finish
- + " LED multiple color chromatherapy light (.04AMP)
- , " Aromatherapy
- " <Y U H X ' g Y U h U b X ' V U W \_ F y g h
- %\$ 8 [ ] H ' 7 c b h f c `
- %% L-shaped door for wheelchair accessible
- %&" Air Massage System: (4.5AMP 486W)
  - Seventeen (17) therapeutic air massage jets with backflow valve
  - Variable Speed Pump with Auto Purge
- % " Hydro Massage System: (5A 600W)
  - Six (6) adjustable and Seven (7) fixed hydro jets
  - Hydro Massage Air Flow Intensity Control
  - 5 AMP Pump
  - In-line water heater (5.5AMP 650 w)

13. Five-Piece thermostatic faucet set (chrome finish)

- Thermostatic control valve
- Two (2) 2-way diverters with extension handles
- Pull out, hand held, chrome plated shower with 5 ft. retractable stainless steel braided hose

**Plumbing:**

- Two (2) x 5' long stainless steel braided water supply lines with 3/4'' IPS connectors
- Two (2) x 2'' floor drains
- Two (2) PVC 2'' drain elbows

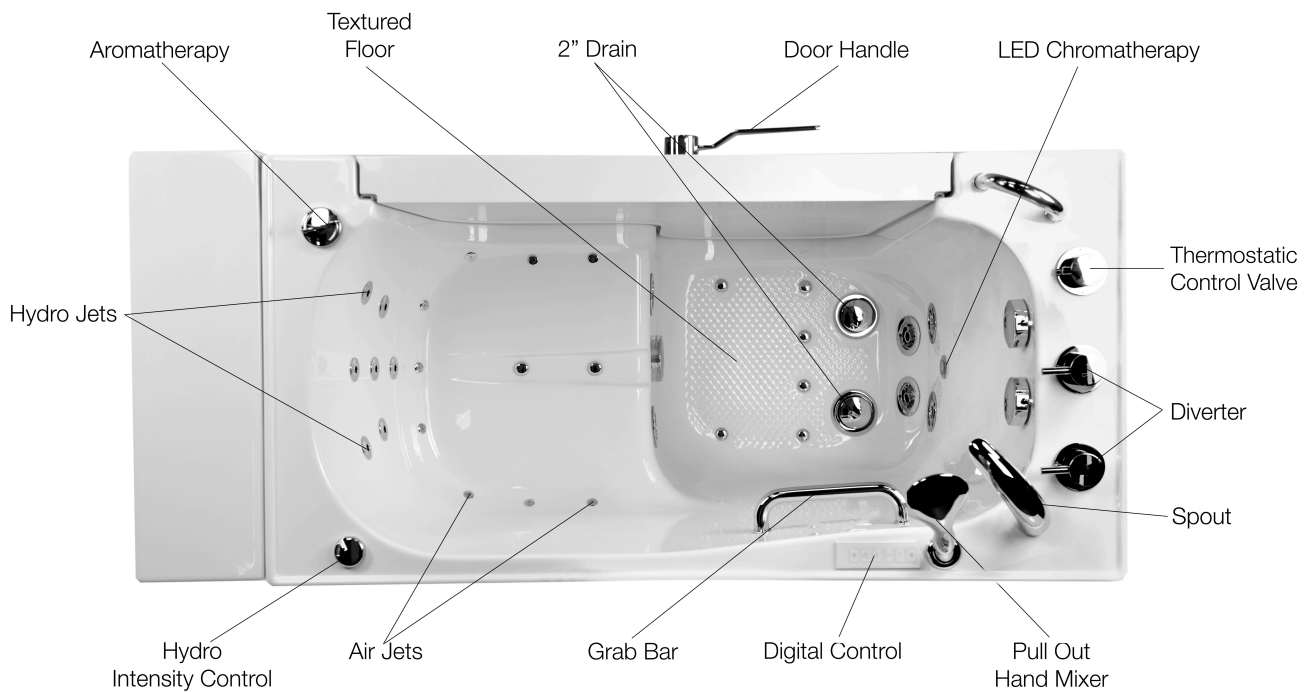
**Electrical:**

Electrical requirement is one dedicated 120 V electrical line with a 20AMP GFCI standard three prong outlet

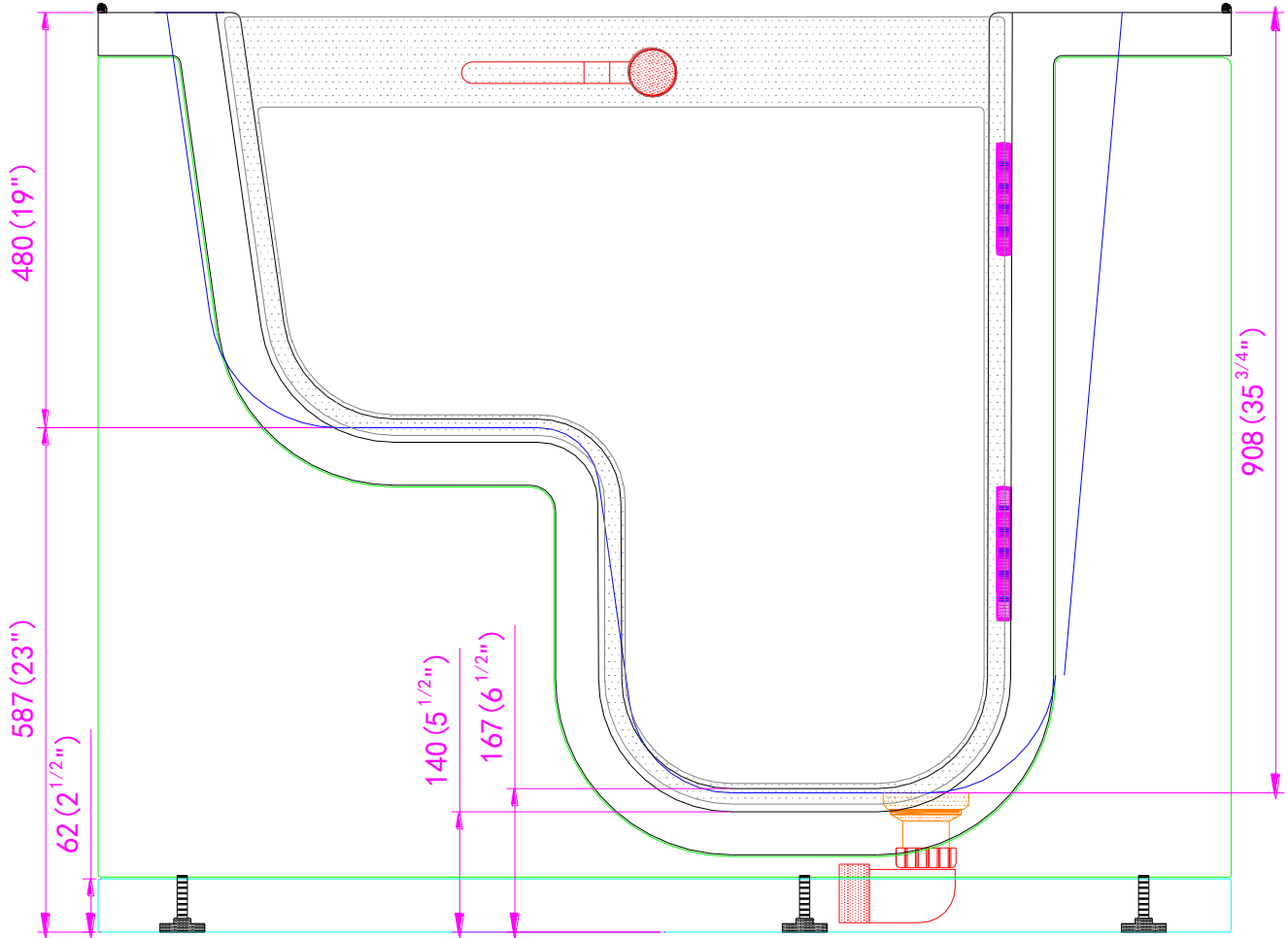
**Warranty:**

- Lifetime limited warranty on acrylic walk in tub shell, frame, and door.
- 5 Year parts warranty\*
- Thermostatic Control Valve (TCV) 1 year limited warranty

# Transfer 26 Dual+Heat Massage Walk In Bathtub (Wheelchair Accessible)



# Transfer 26 Dual+Heat Massage Walk In Bathtub (Wheelchair Accessible)

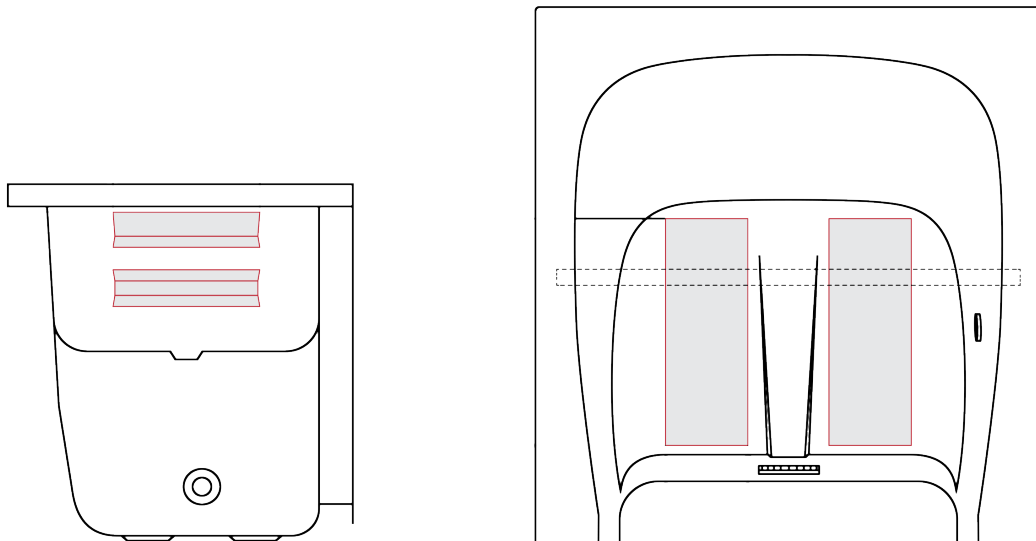
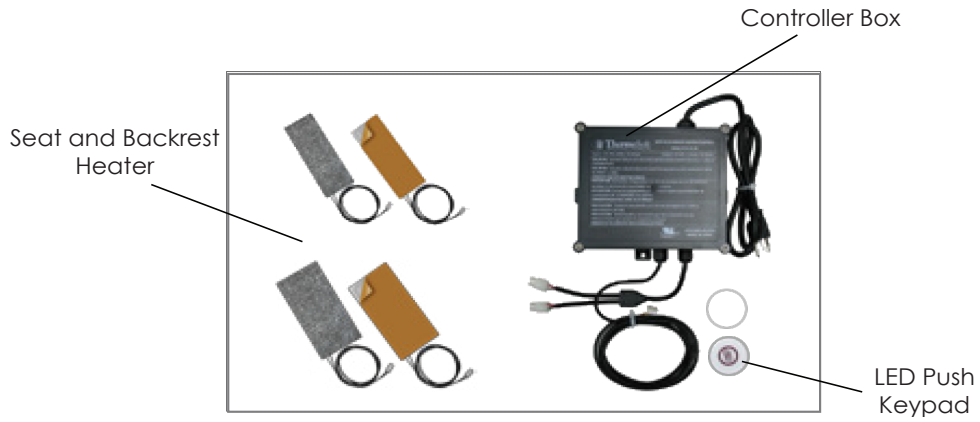


Disclaimer:  
In an effort to continually improve our product, specifications and configurations are subject to change without notice. Before ordering or installing, consider future access to essential equipment.





# Transfer 26 Dual+Heat Massage Walk In Bathtub (Wheelchair Accessible)



Disclaimer:  
In an effort to continually improve our product, specifications and configurations are subject to change without notice. Before ordering or installing, consider future access to essential equipment.