

Thomas & Betts

UV Stable and RoHS Compliant!

Superstrut[®]

GoldGalv[®]
Electro-Galvanized
Finish



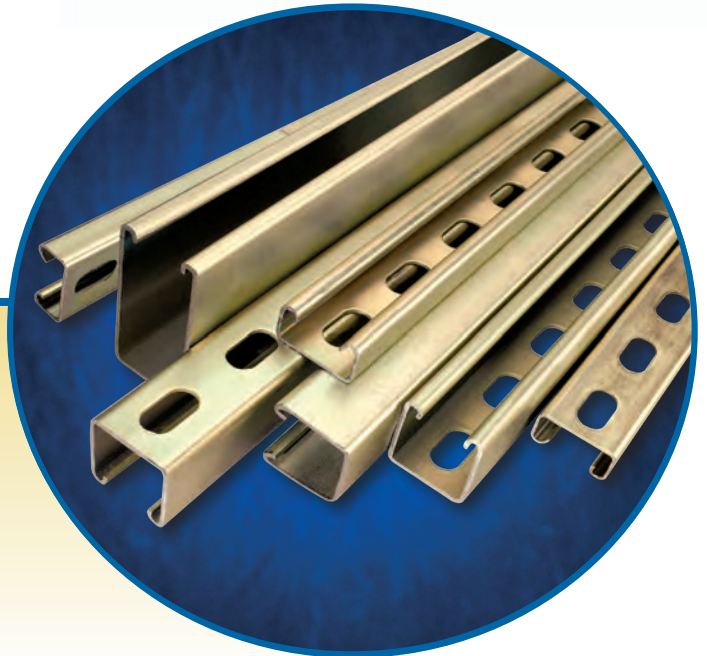
OSHA
SAFE!

GoldGalv® Electro-Galvanized Finish

New Trivalent GoldGalv® Is UV Stable and RoHS Compliant

Thomas & Betts is proud to introduce the new and improved Trivalent GoldGalv® finish. GoldGalv® is a combination of .5 mils electro-plated Zinc, plus gold Trivalent Chromium conversion top coat.

- **Gold Trivalent Chromium Finish** — The new GoldGalv® finish features a Trivalent Chromium formulation that provides all the features and protection of Hexavalent Chromium (CR VI) without the use of this harsh chemical. Hexavalent Chromium is a substance that is restricted by some standards such as European directive RoHS (Restriction of Hazardous Substance)
- **Trivalent GoldGalv® Is UV Stable** — The improved Trivalent GoldGalv® finish holds up in direct sunlight. Able to be stored outside, the finish has UV stability and resists fading
- **RoHS Compliant** — One great feature of the new Trivalent Chromium formulation is RoHS compliance. Because Hexavalent Chromium is a substance that is restricted by RoHS, moving away from a Hexavalent formulation to the new Trivalent formulation will make the performance of GoldGalv® available to customers affected by RoHS, and other standards like RoHS, around the world
- **Trivalent GoldGalv® Is OSHA Safe** — This new Trivalent formulation of GoldGalv® does not contain any Hexavalent Chromium and, therefore, does not fall under the scope of the OSHA standard at all. As a result, the new Trivalent GoldGalv® is OSHA safe
- **ASTM B633 Specification** — The improved GoldGalv® finish is applied in compliance with ASTM B633 coating, the same standard as previously used. This standard outlines electro-deposited coatings of zinc on steel



T-Plate Connector



Five-Hole Angle Connector



Three-Sided Angle Connector

Superstrut® GoldGalv® Outperforms the Competition

The new and improved GoldGalv® Trivalent finish is RoHS compliant and provides continued safety within OSHA guidelines. But most important of all, the new Superstrut® GoldGalv® finish provides a level of performance unmatched by the competition.

- **Superior Corrosion Protection** — One hallmark of the GoldGalv® finish is the superior corrosion protection it provides. In the ASTM B117 salt spray test, the new GoldGalv® finish provided improved protection as compared to the previous Hexavalent formulation, and substantially more protection than painted finishes or G90 Pre-Galvanized (see chart on next page). This outstanding corrosion protection means more versatile installations and more service life for GoldGalv® finished products
- **Strong Abrasion Resistance** — The GoldGalv® finish won't chip or peel like a green painted strut product. It stands up to rough handling
- **Clean Finish** — GoldGalv® ensures a finished product that leaves no residue on your hands. In the GoldGalv® process, a zinc finish is applied after fabrication. As a result, all of the oil and grime that accumulates during manufacturing gets thoroughly cleaned off during the plating process
- **Paintable Surface** — The new GoldGalv® finish provides a non-porous and non-crystalline surface. Not only does this feature provide enhanced corrosion protection, but also provides an excellent bond for the paint of your choice

Superstrut® GoldGalv® offers more protection than painted finishes or G90 Pre-Galvanized.

- **No More White Rust** — With pre-galvanized struts, a common quality issue is the formation of white rust on the zinc finish. With GoldGalv®, the Trivalent Chromium finish is applied over the zinc to seal it and stop the formation of white rust
- **Great Electrical Conductivity** — Unlike paint or enamel, the GoldGalv® surface offers a minimum of electrical resistance, so electrical applications are easily grounded when grounding is needed
- **Punched Holes and Cut Ends are Protected** — Unlike a pre-galvanized finish where steel holes and cuts have no corrosion protection, SilverGalv™ protects every portion of the strut. Because the finish is applied after fabrication, all punched holes and cut ends share a consistent quality with the rest of the material. Even after cutting fabricating, SilverGalv™ will continue to protect with it's sacrificial zinc process

Complete Offering of GoldGalv® Fittings and Accessories

Mismatched strut assemblies are a thing of the past with Superstrut GoldGalv®. With a complete line of channel, hardware, fittings, hangers and pipe straps, all components have the same electrogalvanized finish for consistent performance and uniform aesthetics.



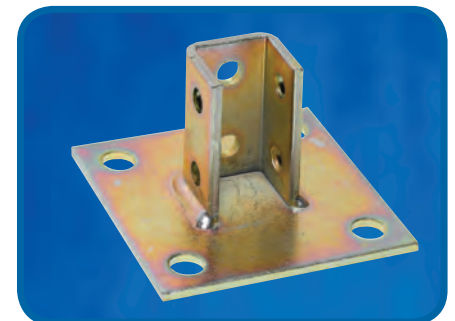
Cobra®



Trap-Eze™



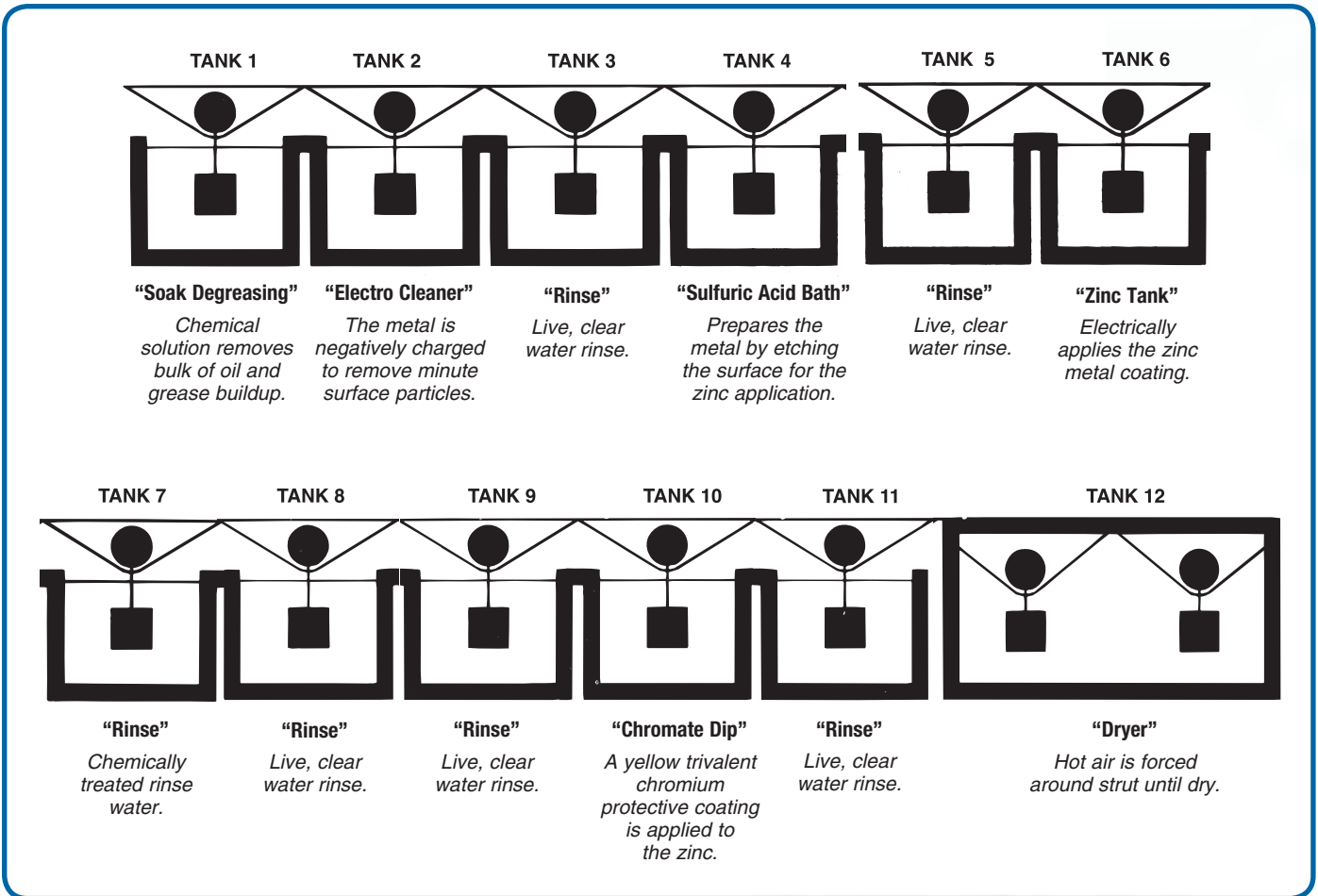
Trapnut®



Post Base Connector

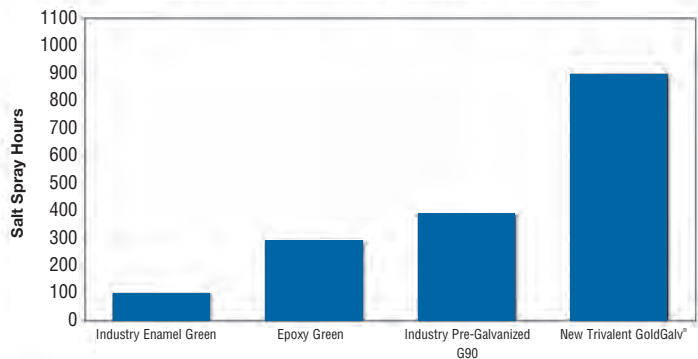
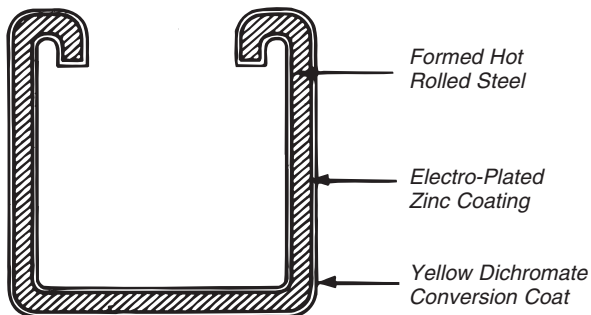
GoldGalv® Plating Process

The standard GoldGalv® finish is made up of a multi-step electrogalvanizing and zinc dichromate process. The trivalent Chromium finish is applied over the zinc, producing a chemically bonded non-porous barrier for protection from moisture and air. The .5 mil electro-plated zinc and gold trivalent Chromium finish provide all of the features and protection of hexavalent Chromium without the use of the chemical.



Metal Framing Channel Finish

Corrosion-Resistant Testing, ASTM B117



www.tnb.com

Thomas & Betts

Please ask your Thomas & Betts sales representative for a complete catalog of quality Thomas & Betts electrical products or visit us at www.tnb.com. For customer service, call 1-800-816-7809. For technical questions, call 1-888-862-3289.

Thomas & Betts Corporation
Electrical Division
8155 T&B Boulevard
Memphis, TN 38125
901-252-5000