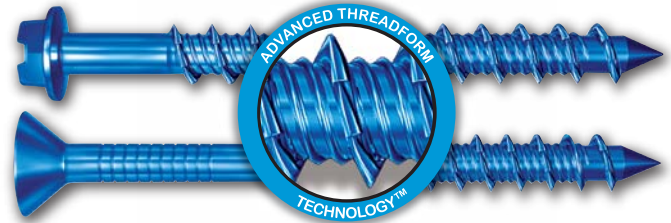


For Fastening In:



Advanced Threadform Technology:



30% less installation torque • 20% more holding power

How to Choose a Tapcon[®]:

1 Choose a Head Type:



Phillips Head

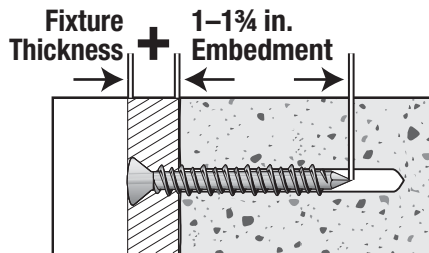


Hex Head



Maxi-Set

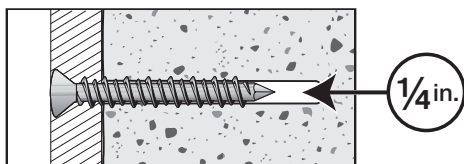
2 Choose a Length:



3 Choose a Diameter:



4 Choose a drill bit long enough to allow the hole to be drilled at least 1/4 in. longer than anchor embedment:



Performance Values:

Anchor Diameter	Ultimate Pull-Out in Concrete (4,000 PSI)*			
	Depth of Embedment in Solid Material			
	1"	1-1/4"	1-1/2"	1-3/4"
3/16"	650 lbs.	870 lbs.	1,090 lbs.	1,460 lbs.
1/4"	800 lbs.	1,340 lbs.	1,820 lbs.	2,380 lbs.

Anchor Diameter	Ultimate Shear In Concrete (4,000 PSI)*			
	Depth of Embedment in Solid Material			
	1"	1-1/4"	1-1/2"	1-3/4"
3/16"	720 lbs.	800 lbs.	860 lbs.	990 lbs.
1/4"	1,360 lbs.	1,370 lbs.	1,380 lbs.	1,670 lbs.

Anchor Diameter	Anchor Embedment	Ultimate Pullout/Shear In Hollow Block*	
		Ultimate Pullout	Ultimate Shear
3/16"	1"	340 lbs.	730 lbs.
1/4"	1"	500 lbs.	1,000 lbs.

*A safety factor of 4:1 or 25% of ultimate pullout/shear value is generally accepted as a safe working load.



Blue Climaseal[®] Tapcon[®]



Product Features & Benefits

- Patented Advance Threadform provides superior pull-out performance.
- Application of Climaseal[®] coating adds extra corrosion protection.
 - 30% less installation torque; 20% more holding power.
- Reversible and removable, can be installed close to concrete edge.
 - Building code approved.

Common Applications

- Downspout straps • Electrical equipment • Furring strips
- Flag holders • Hurricane preparation • HVAC strapping
- 2 x 4's • Window/Door frames & bucks

410 Stainless Steel Tapcon[®]



**Superior
Corrosion
Protection**

Product Features & Benefits

- 410 Series Stainless for superior corrosion protection.
- Cuts threads into concrete, brick and hollow block.
- Reversible and removable, can be installed close to concrete edge.
 - Fast installation... drill a hole...drive an anchor.

Common Applications

- Marine
- Screened porch and pool enclosures
- Railings—safety and decorative

Maxi-Set Tapcon[®]



**Available in silver
or white finish**

Product Features & Benefits

- Patented Advance Threadform provides superior pull-out performance.
- Large 5/8" diameter flange provides more bearing surface than regular Tapcon.
- UltraShield[™] long-life finish delivers excellent corrosion protection.
- Reversible and removable, can be installed close to concrete edge.
 - Building code approved.

Common Applications

- Shutters—protective and decorative
- Screened porch and pool enclosures

White Tapcon[®]



Product Features & Benefits

- Patented Advance Threadform provides superior pull-out performance.
- White UltraShield[™] long-life finish delivers excellent corrosion protection.
- Recommended for use in ACQ pressure-treated lumber.
- Reversible and removable, can be installed close to concrete edge.
 - Building code approved.

Common Applications

- Window frames
- Shutters—protective and decorative

Tapcon Installation Accessories

Tapcon concrete anchors are designed to work as a part of a system. The system includes the Condrive[®] Installation Tool, the carbide tipped Tapcon[®] Drill Bit, and the Tapcon[®] anchor. For consistent performance, it is recommended to use the entire system.

Tapcon Drill Bits



- Ensure the precise drilling of pilot holes when installing Tapcon anchors.
- Masonry drill bits with a carbide tip.
- Tapcon drill bits are sold separately and are also included in the large packages of anchors (at select stores only).
- Colorstripe on drill bit package corresponds to Tapcon Packaging.
 - For installing 1/4" Tapcon fasteners, use a 3/16" Tapcon drill bit (Green Stripe)
 - For installing 3/16" Tapcon fasteners, use a 5/32" Tapcon drill bit (Red Stripe)

Pick the correct drill bit diameter by matching the color stripes on the packaging.

3/16" Drill Bit for 1/4" Tapcons

5/32" Drill Bit for 3/16" Tapcons

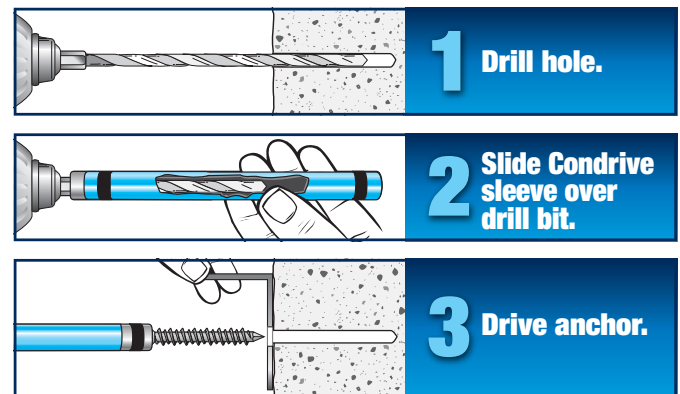
Fixture Thickness	Recommended Anchor Length	Drill Bit Length
0 to 1/4"	1-1/4"	3-1/2"
1/4" to 3/4"	1-3/4"	3-1/2"
3/4" to 1-1/4"	2-1/4"	4-1/2"
1-1/4" to 3-1/4"	2-3/4"	4-1/2"
1-3/4" to 2-1/4"	3-1/4"	5-1/2"
2-1/4" to 2-3/4"	3-3/4"	5-1/2"
2-1/2" to 3"	4"	5-1/2"

Condrive 500 Installation Tool

- Makes installation of Tapcon[®] Concrete Anchors easy, fast, and accurate.
- Designed for use with a hammer drill and Tapcon drill bits.
- Eliminates the need for two drills or extra nut drivers.
- Installs both head styles and all lengths of Tapcons.
- Tool drives 3/16" and 1/4" diameter Tapcons.



Torque adjusted driver prevents over-torquing anchor heads.



Drill

Slide

Drive