

### IMPORTANT SAFEGUARDS

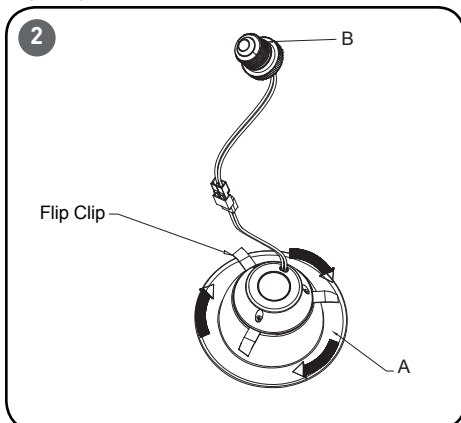
**WARNING** - Risk of fire or electric shock. Disconnect power at fuse or circuit breaker before installing or servicing.

### READ AND FOLLOW ALL SAFETY INSTRUCTIONS

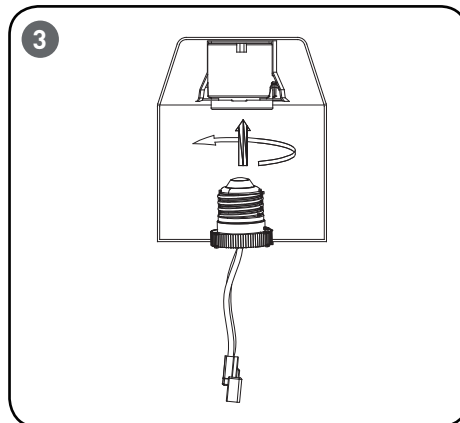
- WARNING** – Risk of fire or electric shock. LED Retrofit Kit installation requires knowledge of luminaire electrical systems. If not qualified, do not attempt installation. Contact a qualified electrician.
- WARNING** – To prevent wiring damage or abrasion, do not expose wiring to edges of sheet metal or other sharp objects.
- WARNING** – Risk of fire or electric shock. Install this kit only in the luminaires that have the construction features and dimensions shown in the photographs and/or drawings where the input rating of the retrofit kit does not exceed the input rating of the luminaire.
- SUITABLE FOR TYPE IC LUMINAIRES.
- It may be necessary to remove a socket mounting plate for adequate clearance.
- Each lampholder shall be installed only in its intended manner and orientation.
- Suitable for Wet Locations.
- Min. temperature rating of -25°C.
- Do not make or alter any open holes in an enclosure of wiring or electrical components during kit installation.
- SUITABLE FOR INSTALLATION IN A RECESSED CAN WITH A MAXIMUM OF EIGHT (8) No. 12 AWG THROUGH-BRANCH CIRCUIT CONDUCTORS SUITABLE FOR 75°C MIN.
- WARNING**-THIS RETROFIT KIT IS ACCEPTED AS A COMPONENT OF A LUMINAIRE WHERE THE SUITABILITY OF THE COMBINATION SHALL BE DETERMINED BY AUTHORITIES HAVING JURISDICTION. MIN. LAMP COMPARTMENT DIMENSIONS 4 inch/101.6mm (DIA) x 5 inch/127mm (H).
- This device is not intended for use with emergency exit fixtures or emergency exit lights.

### SAVE THESE INSTRUCTIONS FOR FUTURE REFERENCE

#### TO INSTALL:



**STEP 1:**  
Carefully rotate the "Flip Clips" clockwise until the clips are fully-deployed. See **Figure 2**.

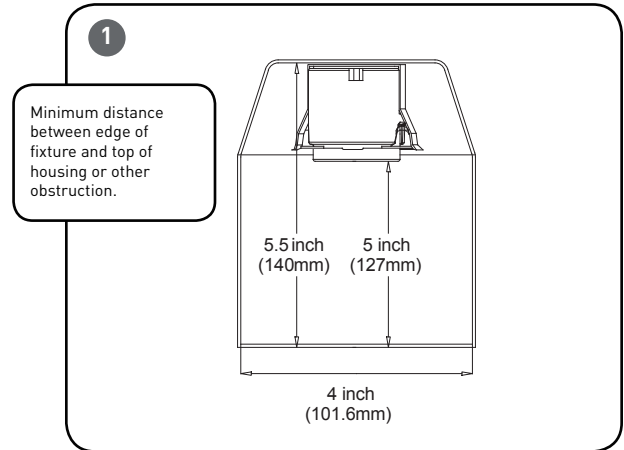


**STEP 2:**  
Make sure the **POWER IS TURNED OFF** at the source to the recessed can.

#### INSTALLATION INSTRUCTIONS-ENGLISH

##### Package Contents:

Part	Description	Quantity
A	4" Retrofit downlight	1
B	Edison Socket Adapter	1
C	Field applied label	1



#### RECESSED HOUSING COMPATIBILITY

- Designed to install in standard 4in recessed downlight housings.
- Compatible with most dimmers when used with multiple fixtures. Consult [www.creebulb.com/dimmers](http://www.creebulb.com/dimmers) for a compatibility chart.
- Compatibility of housings may be determined by measurement of the housing as detailed in the drawing above (**Figure 1**).

#### STEP 3:

Remove existing trim and bulb, revealing the existing recessed socket.

#### STEP 4:

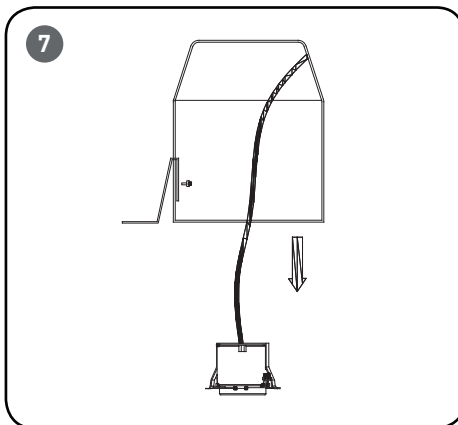
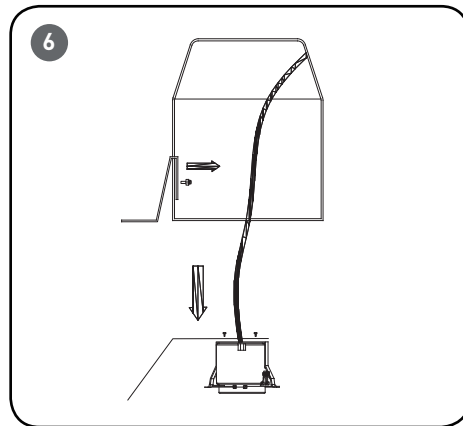
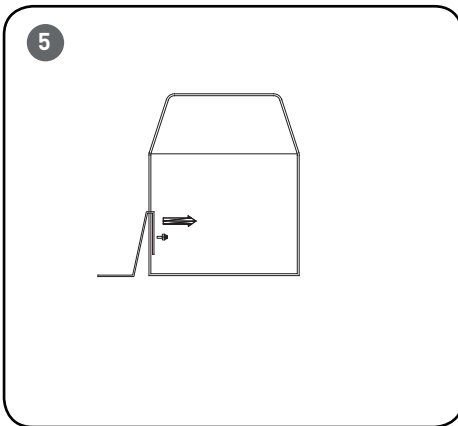
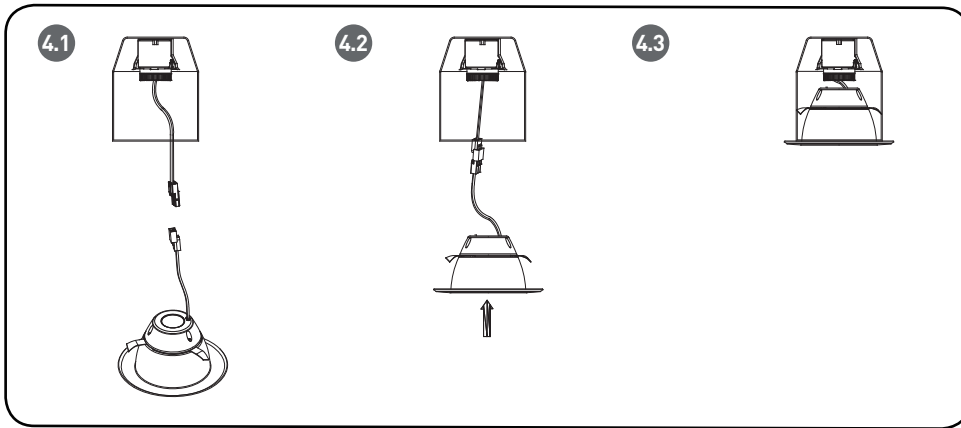
Install "Field Applied Label" into the recessed can.

#### STEP 5:

Screw the fixture Edison base assembly into the recessed can socket by turning clockwise. See **Figure 3**.

#### STEP 6:

Install fixture up into the recessed housing firmly until trim ring is flush with the ceiling. Rotate fixture clockwise slightly to tighten fit with ceiling and set in recessed housing. For best results, ensure "Flip Clips" are not aligned with metal trim clips inside of recessed housing during installation. See **Figure 3 and 4**.



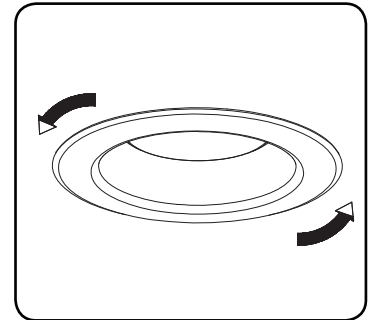
**STEP 7:**  
If the trim ring is not flush with the ceiling, remove fixture by turning counterclockwise while pulling downward. Remove the fixture completely from the recessed can by turning the fixture Edison base counterclockwise.

**STEP 8:**  
Locate the recessed can socket and remove socket bracketry and/or socket plate to allow the socket to hang freely. See **Figures 5, 6 and 7.**

**STEP 9:**  
Screw in fixture Edison base back to the recessed can socket and reinstall fixture into the recessed can.

## REMOVAL OF FIXTURE

**NOTE:** Make sure power to fixture is disconnected before attempting to remove fixture module from fixture.



**STEP 1:**  
To remove fixture, grip firmly on the trim ring and rotate 1/4 turn counterclockwise to unlock clips from recessed can.

**STEP 2:**  
Continue to turn counterclockwise while pulling downward on the fixture. This will disengage the clips allowing the fixture to pull free.

**STEP 3:**  
Detach fixture from recessed housing socket.

**CAUTION:** Changes or modifications not expressly approved could void your authority to use this equipment.

**Note:** This equipment has been tested and found to comply with the limits for a Class B digital device, pursuant to part 15 of the FCC Rules. These limits are designed to provide reasonable protection against harmful interference in a residential installation. This equipment generates, uses and can radiate radio frequency energy and, if not installed and used in accordance with the instructions, may cause harmful interference to radio communications. However, there is no guarantee that interference will not occur in a particular installation. If this equipment does cause harmful interference to radio or television reception, which can be determined by turning the equipment off and on, the user is encouraged to try to correct the interference by one or more of the following measures:

- Reorient or relocate the receiving antenna.
- Increase the separation between the equipment and receiver.
- Connect the equipment into an outlet on a circuit different from that to which the receiver is connected.
- Consult the dealer or an experienced radio/TV technician for help.

In accordance with California Proposition 65, Cree provides the following statement due to the customary electronics components used in this product. **WARNING: This product contains a chemical known to the state of California to cause cancer. WARNING: This product contains a chemical known to the state of California to cause birth defects or other reproductive harm.**

© 2016 Cree, Inc. All rights reserved. For informational purposes only. Content is subject to change. See [www.creebulb.com/warranty](http://www.creebulb.com/warranty) for warranty and specifications. Cree® is a registered trademark, and the Cree logo is a trademark of Cree, Inc.

**CREE**   
www.creebulb.com