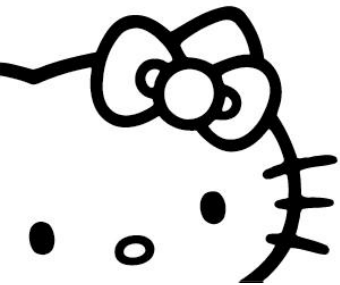


Cotton Candy Maker

Item # APP-96209

Owner's Manual



HELLO KITTY®

Important Safety Precautions

When using your cotton candy maker, basic safety precautions should always be followed, including the following:

1. READ ALL INSTRUCTIONS BEFORE USING YOUR POPCORN MACHINE.
2. Do not touch hot surfaces. Always use handles or knobs to operate.
3. Avoid contact with moving parts.
4. To avoid electrical hazards, do not expose cords or plugs to water.
5. Stop using the appliance if the cord or plug is damaged.
6. Adult supervision is necessary when this appliance is used in the presence of children.
7. Keep this appliance and its cord away from excessive heat.
8. To prevent electrical shock, do not immerse the cord, plug or motor base in water or other liquids.
9. Do not touch the drill bit when it is in operation.
10. Do not use outdoors.
11. Always turn this appliance "OFF" before assembling or cleaning.
12. Turn this appliance "OFF" before disconnecting the power plug from a wall outlet.
13. The motor base has to be placed on a level surface to work efficiently.
14. Only use this appliance for its intended use.
15. Unplug the power cable when this device is not in use or before cleaning.
16. Do not operate any appliance with a damaged cord or plug or after the appliance has malfunctioned or has been damaged in any manner. Return this appliance to the nearest authorized service facilities for examination, repair, or adjustments.

17. The use of accessory attachments not recommended by the appliance manufacturer may cause injuries.
18. Do not let the cord hang over the edge of a table or counter, or touch any hot surfaces.
19. Do not place this unit on or near a hot gas or electric burner, or in a heated oven.
20. Extreme caution must be used when moving this appliance.
21. DO NOT leave this unit unattended while in use or when plugged in to an outlet.
22. Check inside the heating element compartment for foreign objects before turning on this unit.
23. The center of the heating element can get hot. Avoid contact until it cools.
24. Keep hands away from the machine when it is in the ON position and is spinning.
25. **Clean the reservoir bowl with a hot and wet towel before using for the first time.**

**SAVE THESE INSTRUCTIONS.
FOR HOUSEHOLD USE ONLY.**

Introduction

Thank you for purchasing the APP-96209 Hello Kitty Cotton Candy Maker. You can use this device in order to make delicious cotton candy to enjoy with your family and friends. Please read this manual carefully FIRST in order to get the most out of your device.

Package Contents

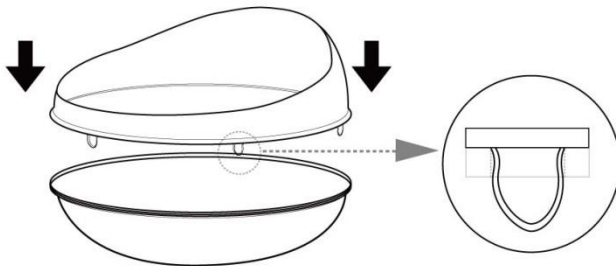
- A. Splashguard
- B. Bowl
- C. Motor Base
- D. Sugar Container
- E. Measuring Scoop
- F. Owner's Manual with Warranty Information

Features and Specifications

- Model no.: APP-96209
- Height: 26cm
- Width: 34cm
- Weight: 1.6kg
- Capacity of sugar container: 18g sugar
- Electrical: AC120 Volt 60Hz 360W
- Compact for Portability

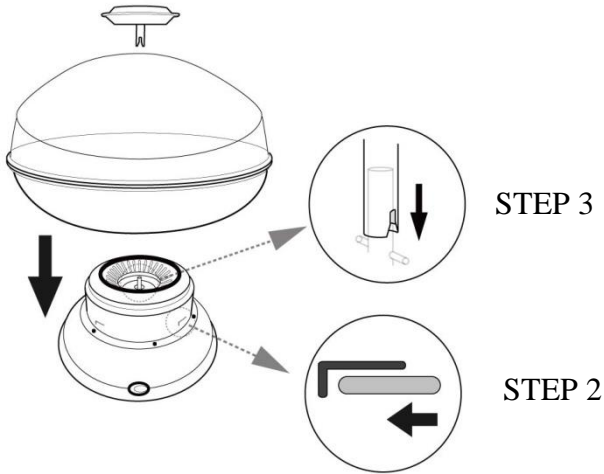
Assembling Your Cotton Candy Maker

In order to properly assemble your popcorn maker, using the parts included with your package, please follow the steps below:



Step 1:

Insert the top cover (splashguard) onto the bowl. Make sure that all of the clips on the cover are inserted securely into the holes on the bowl.



Step 2:

Place the bowl and cover over the motor base, then turn it clockwise so that it locks in place..

Step 3:

Place the sugar container on top of the motor base, making sure its shaft locks into place with the perpendicular shaft on the motor's axis.

Making Cotton Candy

Once your cotton candy maker is properly assembled you can use it to make cotton candy. Before you start, make sure to take the following precautions:

- Make sure that your device is placed on a flat, stable surface.
- Plug the attached power cable into a standard wall outlet.

You should now be ready to start making cotton candy. To do so, follow the steps below:

1. Turn the power switch to the "ON" position and pre-heat your cotton candy machine for five minutes.
2. After five minutes of pre heating, turn the power switch to the "OFF" position, and put 16-18g of refined cane sugar into the sugar container.
(Warning: Do not touch the sugar container when your device is powered "ON")
3. Turn the power switch back to the "ON" position and your device will start producing cotton candy.
4. Cones are included with your device. You can use them to roll up your cotton candy so that it is easier to eat.
5. Unplug your device when it is not in use.



Important Notes

1. The motor base must be placed on a level surface for the device to work efficiently.
2. Do not add refined cane sugar while the unit is powered on.
3. Do not use liquid sugar or sugar cubes in this cotton candy machine.

Cleaning and Maintenance

1. Make sure that the power switch is in the "OFF" position and the device is not plugged in before cleaning.
2. After using, wait at least 30 minutes for your device to cool before cleaning.
3. Remove the top cover and bowl, and disconnect the two pieces to wash each separately.
4. Remove the sugar container and wash it with warm water.
5. Wash the motor base bowl using ONLY a hot and damp cloth for cleaning.
6. Any other servicing should be performed by an authorized service representative.

Troubleshooting

Problems	Reasons	Solutions
Device is excessively noisy when operating	The cover, bowl and motor base are not properly attached to each other.	Try reassembling or retightening.
Cotton candy blowing unevenly in the bowl	The device has not been placed on a perfectly flat surface.	Put the device on a flat surface.

Technical Support

For technical support issues please visit our website at www.sakar.com. You can find manuals, software and FAQ's at the website. Can't find what you are looking for? Fill out an online ticket and one of our technical support team members will answer questions or call 1-877-397-8200 in the U.S. or 0-800-917-4831 in the UK to access our technical support information on the phone.

Sakar Warranty Card

Sakar Warranty

This warranty covers the original consumer purchaser only and is not transferable.

This warranty covers products that fail to function properly **UNDER NORMAL USAGE**, due to defects in material or workmanship. Your product will be repaired or replaced at no charge for parts or labor for a period of one year.

What Is Not Covered by Warranty

Damages or malfunctions not resulting from defects in material or workmanship and damages or malfunctions from other than normal use, including but limited to, repair by unauthorized parties, tampering, modification or accident.

What To Do When Service Is Required

When returning your defective product (postage pre-paid) for service, your package should include:

1. Copy of original bill of sale
2. A detailed written description of the problem.
3. Your return address and telephone number (Daytime)

MAIL TO ADDRESS BELOW:

In the U.S.

Sakar International
Attention: Service Department
195 Carter Drive
Edison, NJ 08817

In the U.K.

Sakar UK
2D Siskin Parkway East
CV3 4PE, UK

You may also visit www.sakar.com for further assistance if necessary or call our technical support department toll free at 1-877-397-8200 in the US, or 0-800-917-4831 in the UK.

This device complies with the part 15 of the FCC rules. Operation is subject to the following two conditions:(1) this device may not cause harmful interference , and (2) this device must accept any interference received, including interference that may cause undesired operation.

Caution: changes or modifications not expressly approved by the party responsible for compliance could void the user's authority to operate the equipment.

NOTE: This equipment has been tested and found to comply with the limits for a Class B digital device, pursuant to Part 15 of the FCC Rules, These limits are designed to provide reasonable protection against harmful interference in a residential installation. This equipment generates. Uses and can radiate radio frequency energy and, if not installed and used in accordance with instructions. May cause harmful interference to radio or -television reception, which can be determined by turning the equipment off and on, the user is encouraged to try to correct the interference by one or more of the following measures:

- Reorient or relocate the receiving antenna.
- Increase the separation between the equipment and receiver.
- Connect the equipment into an outlet on a circuit different from that to which the receiver is connected.
- Consult the dealer or experienced radio/ TV technician for help.

A00-070713

©1976, 2012 SANRIO CO., LTD.

© 2012 Sakar International, Inc. All rights reserved.

All other trademarks are the property of their respective companies