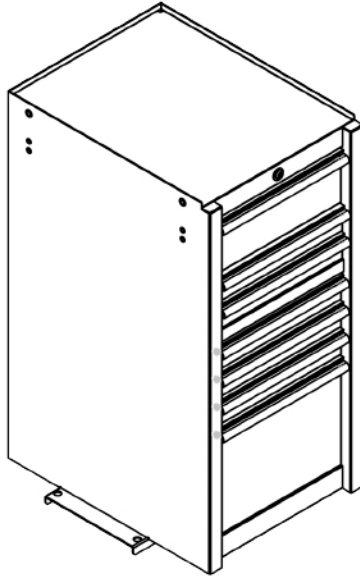




PROFESSIONAL TOOL STORAGE



PAINTED STEEL SIDE BOX MANUAL

Model # RX192507SB

Extreme Tools, Inc.
740 Frontenac Rd.
Naperville, IL 60563
630.369.9303

Assembly instructions

TO REMOVE AND REPLACE DRAWERS

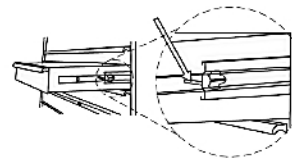
TO REMOVE DRAWERS

Pull drawer out so it's almost fully extended.
Push up right hand black release lever, while pulling down left hand black release lever.
While holding the levers in the positions as instructed above, pull the drawer outward until it is released from the drawer slide.

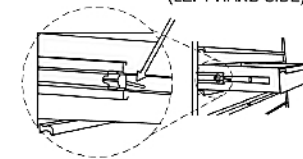
TO REPLACE DRAWERS

Extend the drawer slides from the tool chest/cabinet.
Insert the brackets on each side of the drawer into the slots in the chest/cabinet slides, being careful that they are properly positioned.
Once properly inserted, completely close the drawer to set the slides in their proper positions.

PUSH UP
(RIGHT HAND SIDE)



PUSH DOWN
(LEFT HAND SIDE)



Attach Side Box to Roller Cabinet and Install Casters

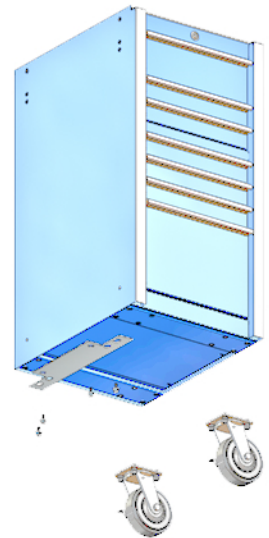
MOUNTING INSTRUCTIONS TO ROLLER CABINET

1. APPLY BRAKES TO ROLLER CABINET'S CASTERS.
2. ATTACH MOUNTING BRACKET TO UNDERSIDE OF ROLLER CABINET'S FRAME WITH BOLTS AND WASHERS.
3. **WARNING! SIDE BOX IS HEAVY.** MUST GET ASSISTANCE TO LIFT AND POSITION SIDE BOX ONTO MOUNTING BRACKET.
4. OPEN TOP DRAWER PARTIALLY TO OBTAIN ACCESS TO (2) TOP HOLES. IF NECESSARY, REMOVE TOP DRAWER COMPLETELY.
5. FROM INSIDE OF THE SIDE BOX, INSTALL (2) SETS OF BOLT WITH WASHERS TO THE MATCHING THREADED INSERTS OF THE ROLLER CABINET.
6. THROUGH THE ELONGATED HOLES OF THE MOUNTING BRACKET, INSTALL (2) SETS OF BOLTS WITH WASHERS TO THE MATCHING THREADED INSERTSON THE UNDERSIDE OF THE SIDE CABINET.

OPTIONAL CASTERS INSTALLATION –

casters purchased separately

1. INSTALL (2) CASTERS ON UNDERSIDE OF SIDE CABINET OPPOSITE THE MOUNTING BRACKET WITH (8) SETS OF BOLTS AND WASHERS.
2. TIGHTEN ALL BOLTS SECURELY.



Optional Casters

SAFETY

● DO NOT attempt to lift, by the side handle using chains, ropes or other lifting devices if two persons cannot lift the chest. Use a forklift placed under the bottom of the chest if this situation occurs. The side handle may fail, which may cause personal injury or damage to the product.

● DO NOT stand on this product or lean on work top.

● WEAR SAFETY GLASSES when removing or repositioning the slides. The tool could slip which may cause personal injury.

● When moving this product, do not pull it. Push the product to prevent personal injury.

● USE THE BRAKES when not moving this product. This will prevent the product from rolling, which may cause personal injury or product damage.

● BE CAREFUL when opening more than one drawer. The product may become unstable and tip, which may cause personal injury or product damage.

● DO NOT mount this product on a truck bed or any other moving object. This may cause personal injury or product damage.

● Secure this product properly before moving it with a forklift.

● DO NOT tow with power equipment. The product could tip, which may cause personal injury or product damage.

● DO NOT alter this product in any manner. For example, do not weld external lock bars or attach electrical equipment. This may cause product damage or personal injury.

● Keep the product on level surfaces. The product may become unstable and tip if stored or moved on an un-level surface, which may cause personal injury or product damage.

● BE CAREFUL when closing the door. Remove hands before the door closes completely to prevent personal injury.

● The maximum weight for each drawer should be no more than 45 kg (100 lbs.)

● Close the door and lock before moving this product. The drawers could come open and make the product unstable and tip, which may cause personal and product damage.

● IMPORTANT: Do not attach or mount this product to a vehicle. Mounting this product to any vehicle in any manner will void warranty.

● IMPORTANT: To avoid chest easily tipping over, fasten the screws to connect the chest and cabinet.

● IMPORTANT: Detents are intended to keep drawers closed when tool box is stationary. Detents are not intended to keep drawers closed when moving. TOOL BOX MUST BE LOCKED USING KEY WHEN MOVING.

MAINTENANCE

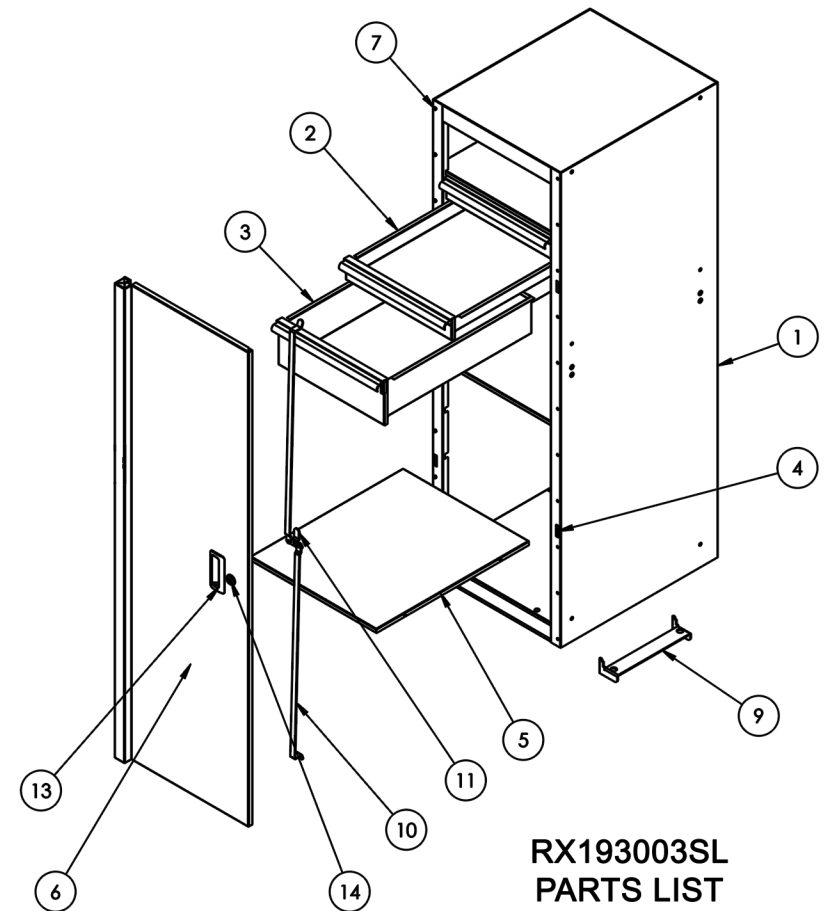
● For optional casters, use high quality bearing grease annually.

● Lubricate the slides twice a year.

● Periodically the drawer fronts, drawer trim, and other surfaces should be cleaned with mild detergent and water.

● Auto wax will preserve the storage unit's luster finish. Apply the wax as you would to a car. The wax will also help protect the unit against scratches.

● Grease and oil can be removed with most standard cleaning Fluids. For safety, use a nonflammable cleaning fluid.



RX193003SL
PARTS LIST

ITEM NO.	PART NUMBER	DESCRIPTION	QTY
1	RX1930SL-00	SL30 BODY WELDMENT	1
2	RXSLDR-3A30	DRAWER 3 ASSY (1930SL)	2
3	RXSLDR-7A30	DRAWER 7ASSY (1930SL)	1
4	Z-MC-REC	MAGNET CATCH (RECTANGULAR)	2
5	RX1930SL-09	ADJUSTABLE SHELF-SL230	2
6	RX1921SL-10	SL DOOR ASSEMBLY	1
7	Z-MSM4-8MM	M4-0.7X8MM FH METAL SCREW	11
9	RX1921SL-15	SUPPORT BRACKET	1
10	RX1925SL-12	LOCKING BAR	2
11	RX1925SL-11	CAM, LOCK	1
13	DOOR PULL	BLACK DOOR PULL	1
14	304005	TUBULAR LOCK	1
NS	Z-SL723019R/L	DRAWER SLIDE SET - 100 LBS	3