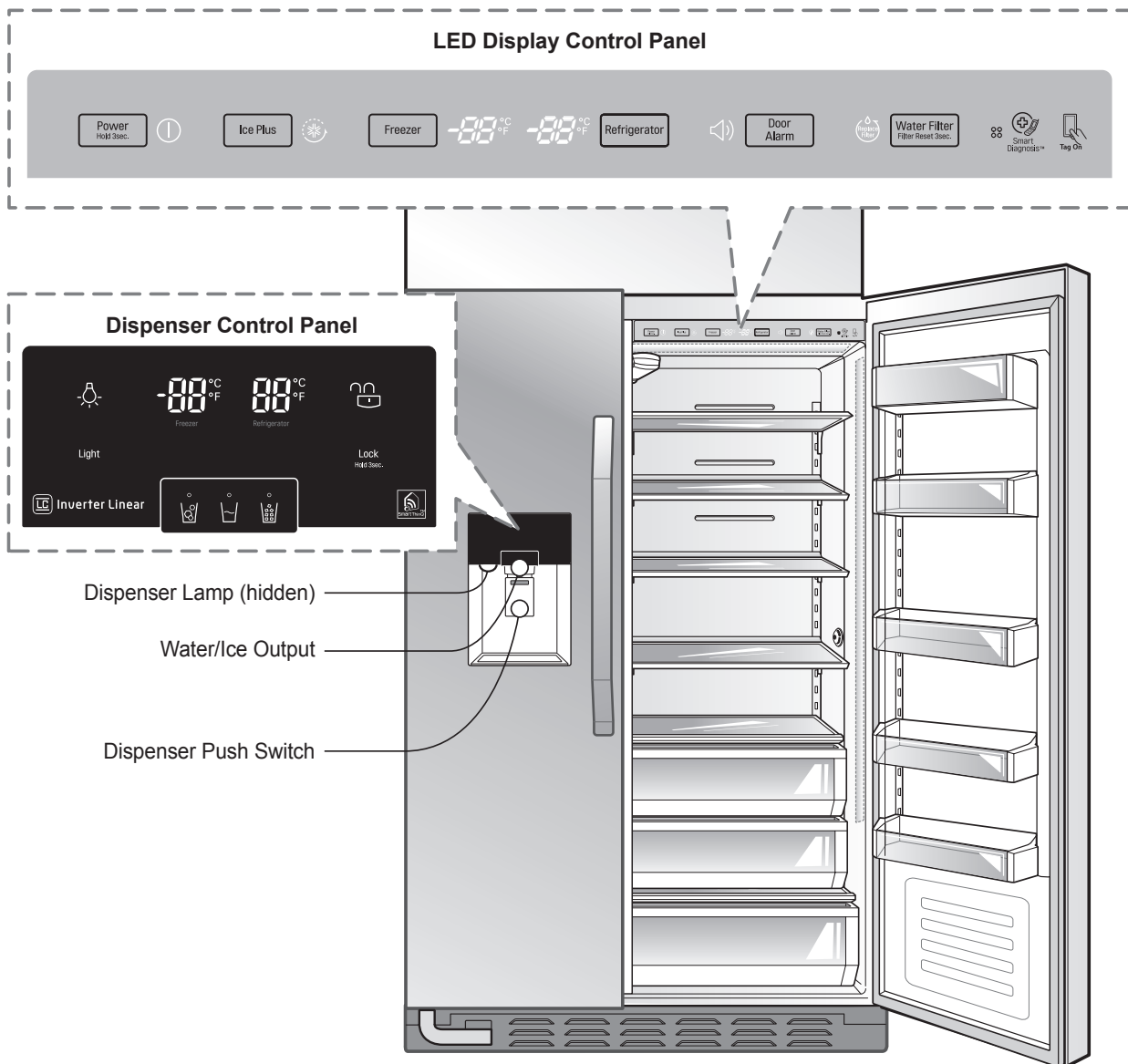


Starting

When the refrigerator is first installed, allow it to stabilize at normal operating temperatures for 2-3 hours prior to filling it with fresh or frozen foods. If operation is interrupted, wait 5 minutes before restarting.

Adjusting the Temperatures and Functions



Control Panel

LED Display Control Panel



① Power

The Power button turns off all electrical power to the unit.

Press and hold the Power button for 3 seconds to turn off the power. When the power is off, the indicator light is off. There is no need to turn off power at the circuit breaker or wall receptacle. Use this function for service or extended vacations.

② Ice Plus

Press the Ice Plus button once to activate the Ice Plus function.

The Ice Plus icon on the display panel illuminates when activated.

The Ice Plus function runs the freezer compartment at the coldest setting for a 24-hour period to increase icemaking by up to about 20%, and then turns off automatically.

NOTE

- Press the button again to cancel the Ice Plus function.

③ Freezer

To adjust the temperature in the freezer compartment, press the Freezer button to cycle through the range of available settings.

④ Refrigerator

To adjust the temperature in the refrigerator compartment, press the Refrigerator button to cycle through the range of available settings.

NOTE

- The actual inner temperature varies depending on the food status, since the indicated temperature setting is the target temperature and not the actual temperature within the refrigerator.
Initially set the REFRIGERATOR CONTROL at 37 °F and the FREEZER CONTROL at 0 °F. Leave them at these settings for 24 hours (one day) to stabilize.
Then adjust the compartment temperature as illustrated above.
- To change temperature display from Fahrenheit to Celsius press and hold the Freezer and Refrigerator buttons simultaneously for approximately 5 seconds. Do the same to convert back to Fahrenheit.

⑤ Door Alarm 

The Door Alarm button also controls the door alarm that sounds three times at 30-second intervals when a compartment door is left open for more than 60 seconds. The alarm stops sounding when the door is closed. Press the Door Alarm button once to activate and deactivate the door alarm function.

NOTE

- Contact your local service center if the alarm continues to sound after the doors are closed.

⑥ Water Filter 

Press and hold the Water Filter button for approximately 3 seconds to reset the filter indicator after the water filter has been replaced.

NOTE

- It is recommended that you replace the water filter approximately every 6 months, when the water filter indicator light reaches 0 or if the ice or water starts to taste bad.

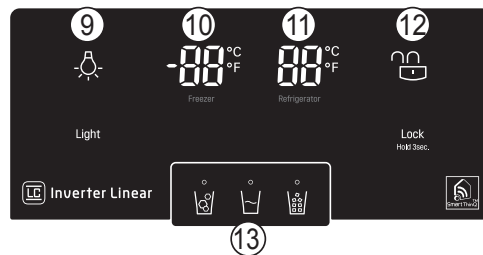
⑦ Smart Diagnosis 

Use during the Smart Diagnosis Feature.

⑧ NFC Tag On 

The Tag On icon, for use with Smart Features.

Dispenser Control Panel



⑨ **Light** 

When Light is pressed the dispenser light turns on and the indicator appears on the LED display.

⑩ **Freezer** 

Freezer temperature indicator.

⑪ **Refrigerator** 

Refrigerator temperature indicator.

⑫ **Lock** 

Press and hold the Lock button for three seconds to lock the dispenser and all of the other control panel functions.
Press and hold again for 3 seconds to unlock.

⑬ **Dispenser Selection Indicator**


Displays whether the dispenser is set to dispense water, cubed or crushed ice.

Dispensing Cubed Ice 

Press the dispenser selection button repeatedly until the cubed ice icon illuminates.
Press the dispenser switch with a glass or other container to dispense cubed ice.

Dispensing Water 

Press the dispenser selection button repeatedly until the water icon illuminates.
Press the dispenser switch with a glass or other container to dispense water.

Dispensing Crushed Ice 

Press the dispenser selection button repeatedly until the crushed ice icon illuminates.
Press the dispenser switch with a glass or other container to dispense crushed ice.

NOTE

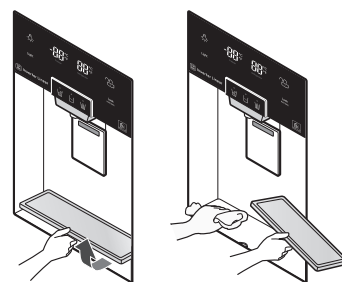
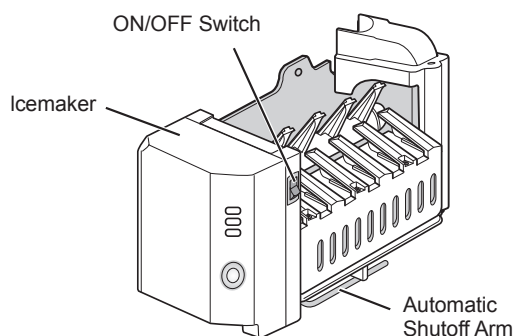
- Hold the glass or other container in place for a couple of seconds after dispensing ice or water to catch the last few cubes or drops. The dispenser is designed to not operate while either refrigerator door is open.

 **CAUTION**

- Hold the container as close to the ice or water chute as possible to avoid spilling and splashing.
- Do not dispense ice into fine china or crystal glasses. China or crystal can be broken.

Cleaning

The water collector has no self-drainage function, so it should be cleaned regularly. Remove the cover by pulling the front of the water collector cover and dry it with a cloth.

**Automatic Icemaker**

- The automatic icemaker can automatically make 6 cubes at a time, 70~120 pieces per day. This quantity may vary by circumstance, including ambient temperature, door opening, freezer load. etc.
- Icemaking stops when the ice storage bin is full.
- If you don't want to use the automatic icemaker, turn the icemaker switch to OFF. If you want to use automatic icemaker again, change the switch to ON.

NOTE

- It is normal that a noise is produced when ice drops into the ice storage bin.
- Occasionally shake the ice storage bin so that the ice does not pile higher on one side. If the ice piles up high next to the ice maker, ice production will stop.

! WARNING

- To avoid injury, do not insert hands into icemaker.

Icemaker Not Working Properly

Ice is Lumped Together

- When ice is lumped together, take the ice lumps out of the ice storage bin, break them into small pieces, and then place them into the ice storage bin again.
 - When the icemaker produces too small or lumped together ice, the amount of water supplied to the ice maker may need to be adjusted. Contact the service center.
- ※ If ice is not used frequently, it may lump together.

Power Failure

- Ice may drop into the freezer compartment. Take the ice storage bin out and discard all the ice. Dry the ice bin and place it back in the freezer.

The Refrigerator is Newly Installed

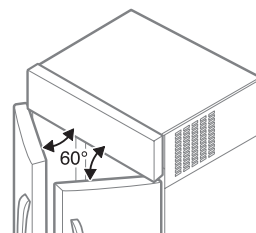
- It takes about 12 hours for a newly installed refrigerator to make ice in the freezer compartment.

Auto-Closing Door System

The doors automatically close when in the 60 degree position, as shown in the picture below.

NOTE

- This function is operated with a spring-damper mechanism. Closing speed and strength depends on the ambient temperature, frequency of door opening/closing and contents of the door bins.



Other Functions

Open Door Alert

- A warning tone will sound 3 times at thirty-second intervals if the refrigerator or freezer door is left open for more than sixty seconds.
- Please contact a local service center if the warning continues to sound after door is closed.

 **CAUTION**

Throw away the first few batches of ice (about 24 cubes) and water (about 7 glasses) first made after refrigerator installation.

The first ice and water may include particles or odor from the feed water pipe or feed water box. This is also necessary if the refrigerator has not been used for a long time.

Children should be supervised when using the dispenser.

Be careful that frost does not block the ice passage.

The ice passage may become blocked with frost if only crushed ice is used. Remove the frost that accumulates by removing the ice bin and clearing the passage with a rubber spatula. Dispensing cubed ice can also help prevent frost buildup.

Never store beverage cans or other items in the ice bin for the purpose of rapid cooling.

Doing so may damage the icemaker or the containers may burst.

Never use thin crystal glass or crockery to collect ice.

Such containers may chip or break resulting in glass fragments in the ice.

Dispense ice into a glass before filling it with water or other beverages.

Splashing may occur if ice is dispensed into a glass that already contains liquid.

To avoid personal injury, keep hands out of the ice door and passage.

Part breakage or injury may occur.

Never remove the icemaker cover.

If discolored ice is dispensed, check the water filter and water supply. If the problem continues, contact service center. Do not use the ice or water until the problem is corrected.

Never use a glass that is exceptionally narrow or deep.

Ice may jam in the ice passage and refrigerator performance may be affected.

Keep the glass at a proper distance from the ice outlet.

A glass held too close to the outlet may prevent ice from dispensing.

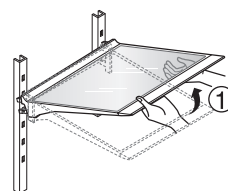
Shelf

The shelves in the refrigerator are adjustable to meet individual storage needs.

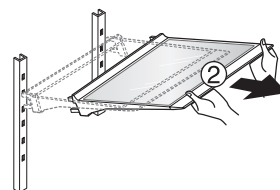


Disassembling

1. Hold the front part of the shelf and lift it up slightly.

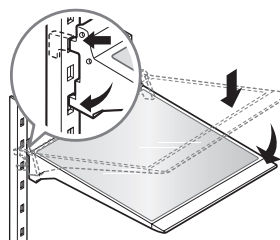


2. While holding the shelf, tilt the shelf to pull it out.



Reassembling

Tilt the front of the shelf up and guide the shelf hooks into the slots at a desired height. Then, lower the front of the shelf so that the hooks drop into the slots.



CAUTION

Make sure that shelves are level from one side to the other. Failure to do so may result in the shelf falling or food spilling.

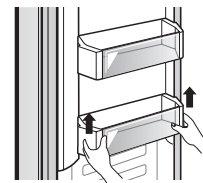
Freezer Door Bin

Use to store small packaged frozen food.

Do not store ice cream or food a for long period of time.

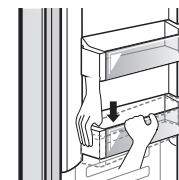
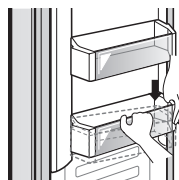
Disassembling

Hold the bin with both hands and slightly lift up the front part to pull it out.



Reassembling

Hold the bin with both hands and reassemble one side at a time by pushing it in.

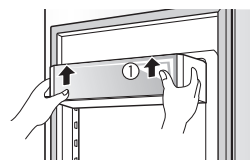


Dairy Corner

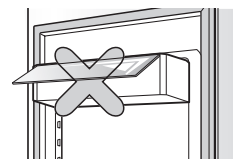
Use to store dairy goods like butter and cheese.

Disassembling

To remove the dairy corner, simply lift it up and pull straight out.



- ▶ If you close the refrigerator door with the dairy corner open, the refrigerator door may not close properly. Make sure to close the dairy corner completely after use.



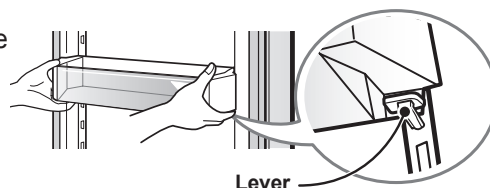
Adjustable Door Bins

Use to store small, packaged refrigerated food or beverages such as milk, canned drinks, etc. The adjustable door bins are removable for easy cleaning and adjustment.

Disassembling

You must remove the dairy corner before disassembling the adjustable door bin.

To remove the door bin, pull the levers on each side and pull the bin up off of the rail.



Reassembling

Before reassembling the adjustable door bin, remove the dairy corner.

Hold the door bin with both hands and place it on top of the rail. Push the basket down while holding the lever under the bin. The bin clicks when it is in the correct position.

CAUTION

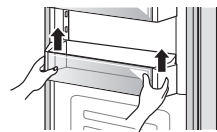
- Always disassemble/assemble the adjustable door bin using two hands. Make sure that the adjustable door bins are empty before disassembling/ assembling them.

Refrigerator Gallon Bin

For storing larger containers, such as gallons of milk.

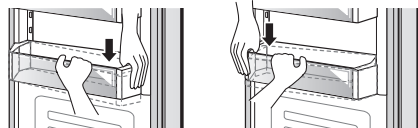
Disassembling

Hold the bin with both hands, lift up and pull out.



Reassembling

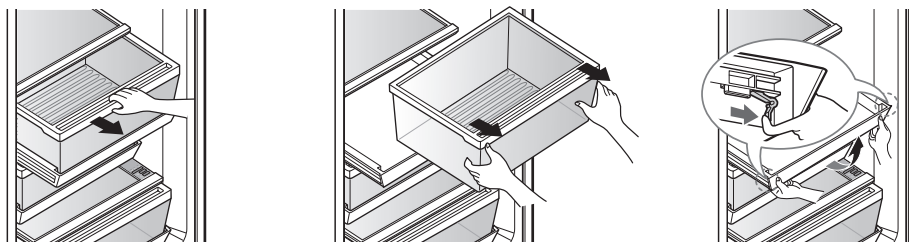
Hold the bin with both hands and click it into place, one side at a time.



Refrigerator/Freezer Drawers

For convenient storage of food such as fruits, vegetables and packaged frozen food.

Disassembling



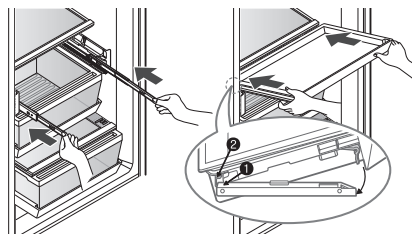
1. Hold the front handle of the drawer and pull it out until it stops.
 2. When you cannot pull out the drawer any more, lift it up slightly to pull it out.
 3. The lower compartment under the drawer is also removable.
- The drawer is reassembled in the reverse order.

CAUTION

- Always disassemble the drawers using two hands.
- Make sure that the drawers are empty before removing them.

Reassembling the Lower Compartment

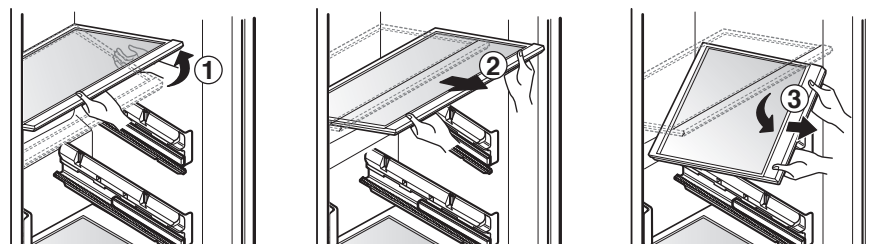
1. Slide both rails in simultaneously.
2. Hook the support **1** into the rail tabs **2** on both sides.
3. Lower the front of the compartment.
The compartment clicks when it is in the correct position.



Disassembling**Upper/Lower Drawer Covers**

1. Lift the front of the cover slightly, then lift the back of the cover from below.
2. Pull the cover forward firmly.
3. Tilt the cover up 45° and remove it.

The cover is reassembled in the reverse order.

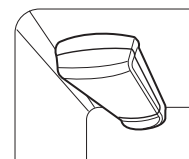
**CAUTION**

Never wash the inside accessories of the appliance in the dishwasher. They must be cleaned by hand.

Replacing the Water Filter

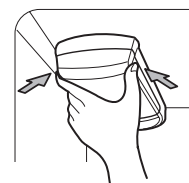
Replace the water filter:

- Approximately every six months.
- When the water filter indicator turns on.
- When the water dispenser output decreases.
- When the ice cubes are smaller than normal.



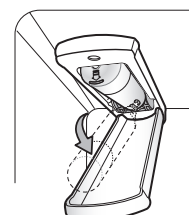
1. Remove the old water filter.

- Lower or remove the top left shelf to allow the water filter to rotate all the way down.
- Press the push button to open the water filter cover.

**NOTE**

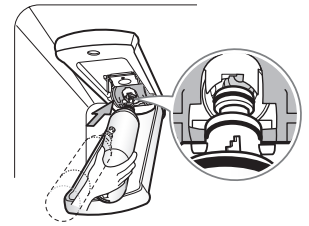
- Replacing the water filter causes a small amount of water (around 1 oz. or 25 cc) to drain. Place a cup under the front end of the water filter cover to collect any leaking water. Hold the water filter upright, once it is removed, to prevent any remaining water from spilling out of the water filter.

- Pull the water filter downward and pull out. Make sure to rotate the filter down completely before pulling it out of the manifold hole.

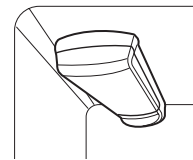
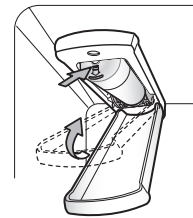


2. Replace with a new water filter.

- Take the new water filter out of its packing and remove the protective cover from the o-rings. With water filter tabs in the horizontal position, push the new water filter into the manifold hole until it stops.



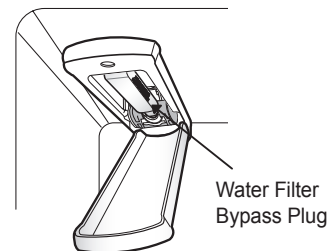
- Rotate the water filter up into position and close the cover. The cover clicks when closed correctly.



3. After the water filter is replaced, dispense 2.5 gallons of water (flush for approximately 5 minutes) to remove trapped air and contaminants from the system. Do not dispense the entire 2.5 gallon amount continuously. Depress and release the dispenser pad for cycles of 30 seconds ON and 60 seconds OFF.

4. Water Filter Bypass Plug

- Keep the water filter bypass plug. You MUST use the water filter bypass plug when a replacement water filter cartridge is not available.



CAUTION

DO NOT operate refrigerator without water filter or water filter bypass plug installed.

NOTE

- To purchase a replacement water filter:
 - Visit your local dealer or distributor
 - Web: Find Parts & Accessories from Support section of lg.com
 - Call : 1-800-243-0000 (USA) , 1-888-542-2623 (Canada)
- Part number of the replacement water filter: ADQ36006101