

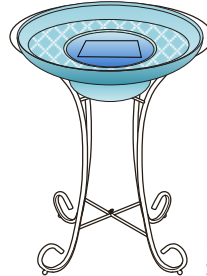
Solar Birdbath / Fountain



* Styles may vary but assembly will be consistent with this manual



Birdbath & Metal Stand with Ring



Birdbath & Metal Stand with Bolts

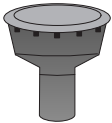


Birdbath



2-Tier Fountain

Fountain Heads



The 360° fountain head accessory can be used to enhance your fountain.
Note: It will only work effectively in bright sunlight.



The short nozzle can be used to produce a finer higher stream of water.
Note: May need to be removed in bright sunlight to avoid splashing.

Warnings

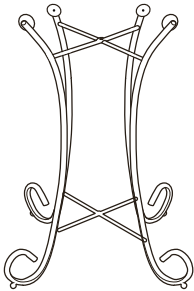


Water must be regularly topped off. We recommend regularly changing the water to ensure it remains clean and free from debris.

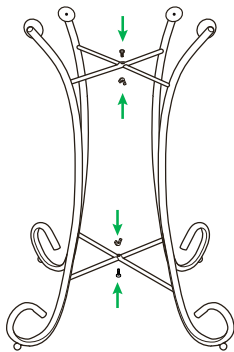


Important!

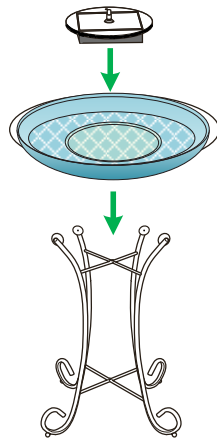
Frost causes damage, store whole product inside during cold weather.



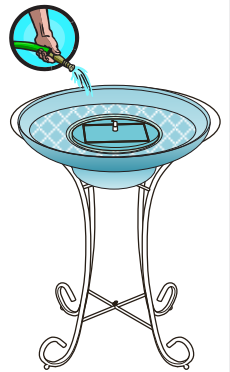
Open frame.



Affix bolts and wingnuts, and attach bowl.



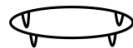
Place Bowl.
Insert Solar panel/pump.



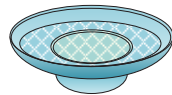
Fill bowl with water.



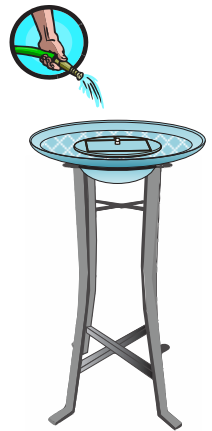
Open frame.



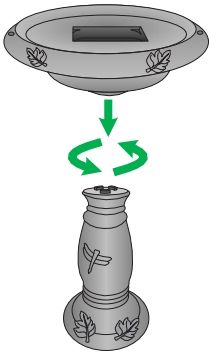
Attach metal ring to frame.



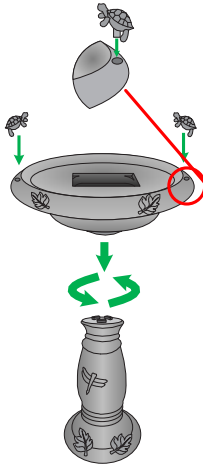
Place Bowl.
Insert Solar panel/pump.



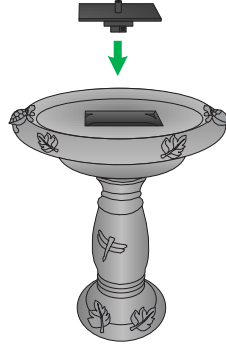
Fill bowl with water.



Attach bowl to pedestal. Align the marks and turn to lock in place.



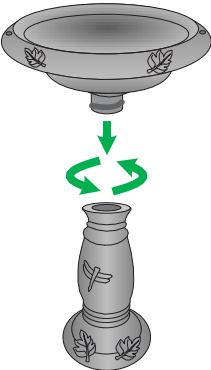
If your fountain includes Accents, locate the pin on the accent pieces and insert into the holes around the edge of the bowl.



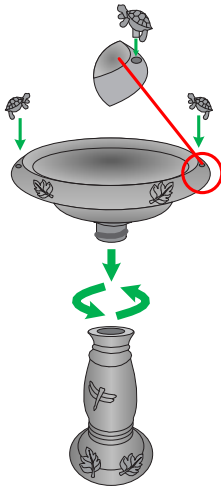
Place the solar panel/pump assembly into the reservoir.



Fill bowl with water.



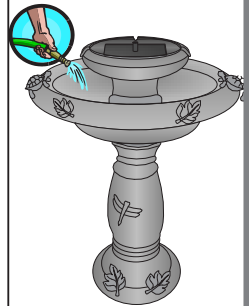
Attach bowl to pedestal. Align the marks and turn to lock in place.



If your fountain includes Accents, locate the pin on the accent pieces and insert into the holes around the edge of the bowl.



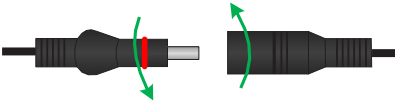
See Page 7 on how to connect upper tier components. Place upper tier into the main bowl.



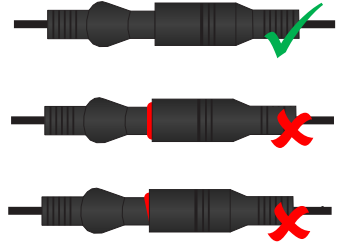
Fill bowl with water.

IMPORTANT!

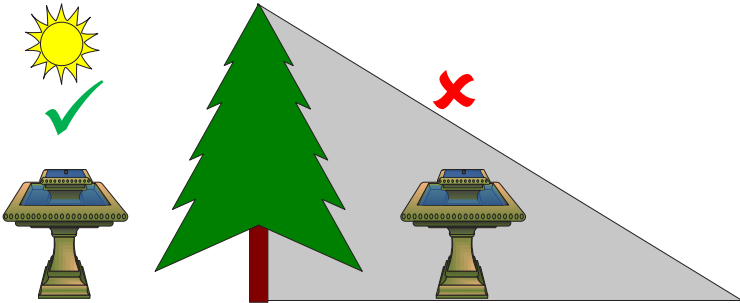
Important!



When reconnecting the pump and panel take care to ensure that the connectors are water tight. Slightly twist the connectors when pushing together, ensure the red o-ring seal remains in its groove and it is not displaced.



Position



Position your fountain so that receives direct sunlight. The fountain will NOT work if the solar panel is in a shaded area.

Warnings



Water must be regularly topped off. We recommend regularly changing the water to ensure it remains clean and free from debris.

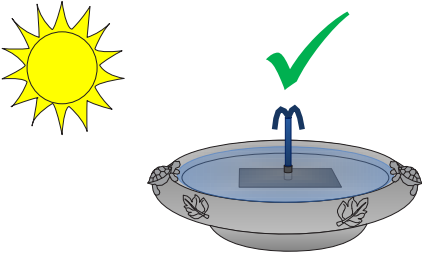


Important!

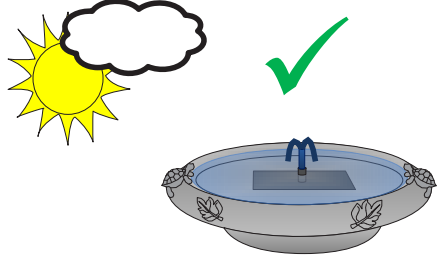
Frost causes damage, store whole product inside during cold weather.

Performance

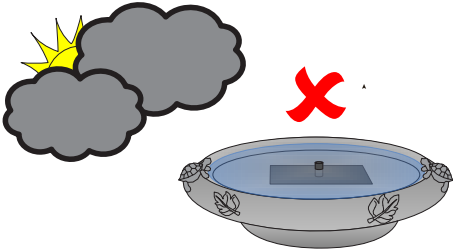
This product is designed primarily to operate in summer months but will also work in spring and autumn provided there is good sunshine. Performance is directly related to the amount and strength of sunlight received.



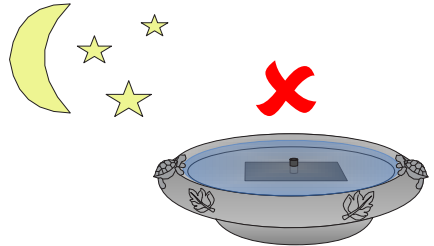
In bright direct sunlight your pump will work well with a consistent fountain height.



In slightly cloudy conditions your pump will work however fountain height will vary as clouds pass in front of the sun.

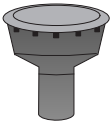


In overcast conditions the solar panel does not generate enough power to run the pump and it will NOT work.



At night the solar panel does not generate power and your pump will NOT work.

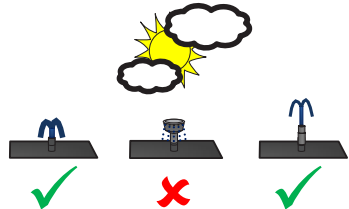
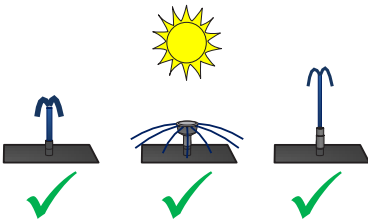
Fountain Heads



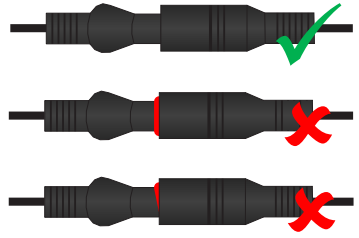
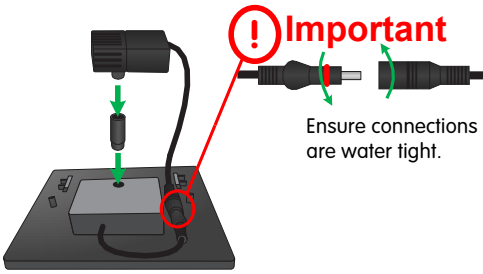
The 360° fountain head accessory can be used to enhance your fountain.
Note: It will only work effectively in bright sunlight.



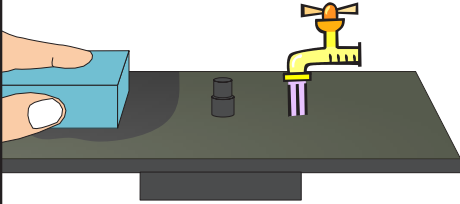
The short nozzle can be used to produce a finer higher stream of water.
Note: May need to be removed in bright sunlight to avoid splashing.



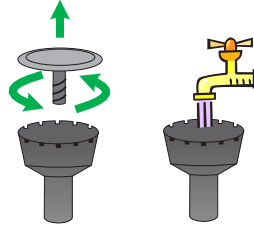
Connections



Maintenance



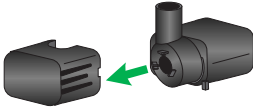
To maintain optimum performance, regularly clean the solar panel using water or glass cleaner in conjunction with a non-abrasive sponge or cloth.



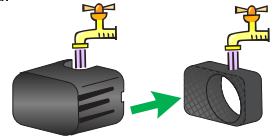
If the fountain head, nozzle, or tubes become blocked, rinse through with water.

Pump Cleaning / Troubleshooting

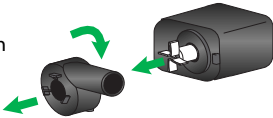
Filter cover can simply be pulled apart as shown.



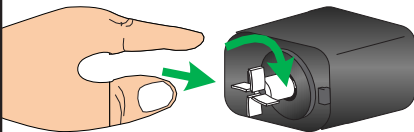
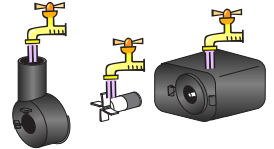
Remove filter material and rinse in water.



Turn off impeller cover to release as shown, impeller can be easily removed

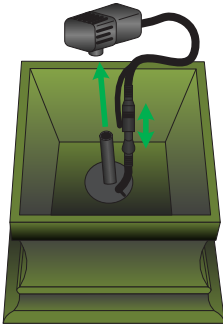


Rinse all parts thoroughly in water.



If the pump is not working immediately, try the following for a manual start. Remove the pump cover, face the panel to the sun, and start manually spinning the impeller clockwise, this can take 1-3 minutes.

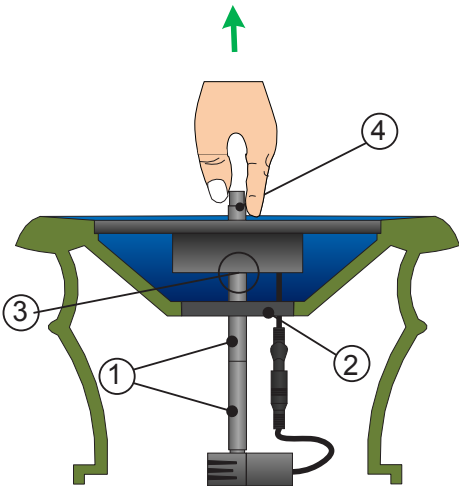
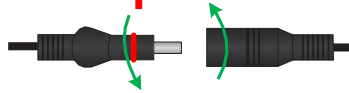
Pump Removal / Assembly



2-Tier Fountain

Remove the top tier and turn upside down on a soft surface. As you turn, ensure the solar panel is supported so that it does not fall out. Remove the pump from the connecting tubes and disconnect the cable.

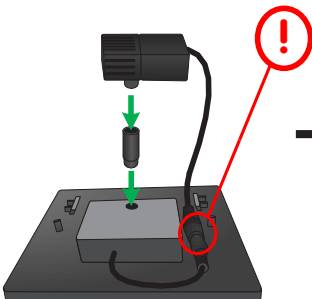
Important



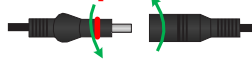
Ensure both tubes (1) are connected so the pump will remain fully submerged. Slide the rubber bung (2) onto the tube and move it down until it is half way down the top tube. Insert the top tube (1) into the bottom of the solar panel (3) by squeezing the pump and panel together. Push the rubber bung (2) into the reservoir hole so it creates a seal. If done correctly, the panel will not lift out.

To ensure the tubes from the pump are connected to the solar panel, try lifting the solar panel gently by pulling on the solar panel nozzle (4). If the panel lifts out the tubes are not connected. See illustration below for assembly.

Birdbath



Important



Connect the pump to the underside of the solar panel as shown and check to ensure the connectors are water tight. When reconnecting slightly twist when pushing together, ensure the red sealing ring remains in it's groove and is not displaced.

Thank you for purchasing this Smart Solar fountain.

Register your Product Here:

<https://smartlivinghg.com/wp/customer-service/product-registration/>

FAQs are available online along with step by step video tutorials to help you with pump cleaning and solar kit assembly.

Visit: <https://smartlivinghg.com/wp/customer-service/faq/>

PROBLEM	RESOLUTION (and page for reference)
The fountain is in sun but the pump is not working.	1. Ensure the connections are secure and that pump tube is connected to underside of solar panel – see pg 7 for Assembly 2. Pump needs manual start - see pg 6 Pump Troubleshooting
No water flow from the top of the solar panel.	1. Try manual start on pump – see pg 6 2. Ensure the tubes from pump are connected to the underside of the solar panel - see pg 7 for Assembly
2-Tier Only: Water is coming through the top of the solar panel, but water is not overflowing from the spouts into the main bowl below.	Rubber bung is not securely in place. 1. Push the rubber bung securely into the reservoir hole to create a seal – see pg 7 for Assembly

Smart Living Home & Garden warranties your solar panel, pump and battery (for Solar-on-Demand units) for one (1) year from the original date of purchase from authorized distributors and retailers. The warranty covers parts that are properly installed and regularly maintained. If the product fails due to a defect in material or workmanship, Smart Living will replace the defective parts free of charge. Your fountain is designed for outdoor use and with proper care will last for many years. If over time your fountain develops scratches or minor wear from normal use, you can contact our customer service department for easy to apply one step touch up paint.

Please unpack and inspect the entire product upon receipt. Report any broken or missing pieces within five (5) business days of receipt to our customer service department and we will provide replacement parts free of charge. Please do not discard any damaged parts until instructed to do so by our customer service department.



smartLiving
home & garden

Smart Solar is a Smart Living Home & Garden brand

Telephone: + 1 813 343 5775

Email: customerservice@smartlivinghg.com

Web: www.smartlivinghg.com

US Patent 7484671 & EU Patent 1648620