

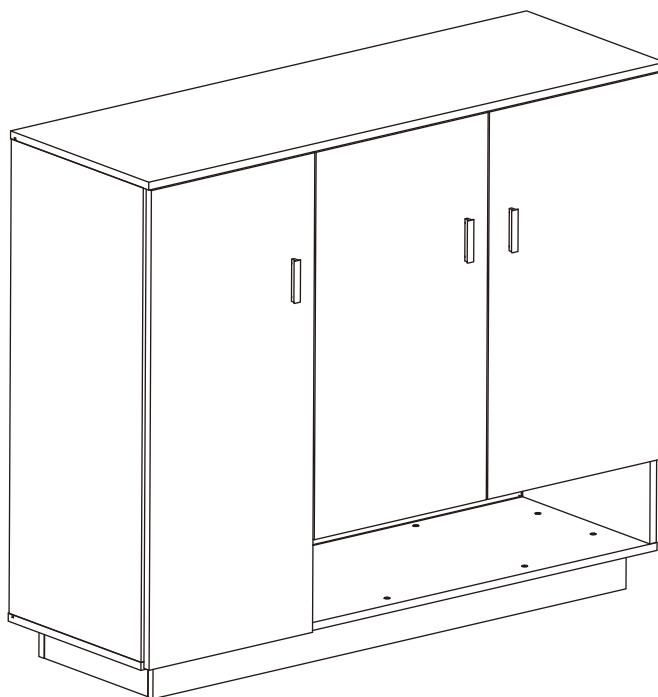


# Furniture of America™

E-commerce Division - Enitial Lab

## ASSEMBLY INSTRUCTIONS

### YNJ-1439-1



### ASSEMBLY RATING

The Assembly Rating is a 5-point system that shows the degree of effort needed in assembling a specific product (with 1 being easy and 5 being difficult). For most products, two persons are recommended.

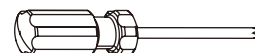
### Tools Required for Assembly:

Allen Wrench



(Included)

Phillips Screwdriver



(Not Included)

EASY



DIFFICULT



2 PERSONS RECOMMENDED

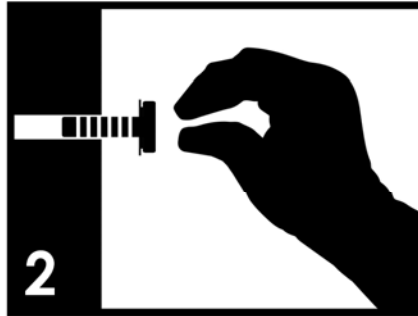
# ASSEMBLY & CARE ADVICE

FOR YOUR FURNITURE TO LAST, CORRECT ASSEMBLY AND PROPER MAINTENANCE ARE NECESSARY. PLEASE FOLLOW THE INFORMATION PROVIDED BELOW TO FULLY ENJOY YOUR FURNITURE.

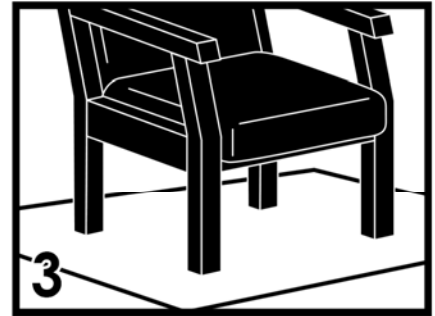
## BASIC ASSEMBLY TECHNIQUES



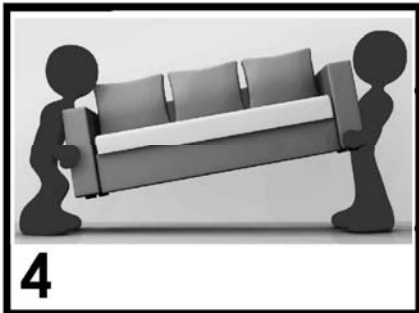
1 It is highly recommended that the assembly should be done near the area of its intended location. Make sure you have enough space to move around during the assembly.



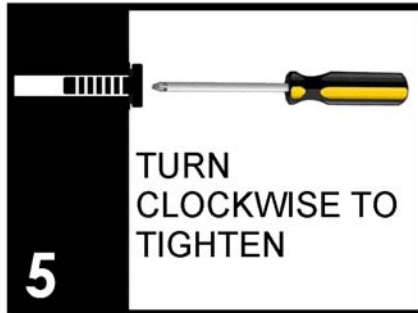
2 Position each part correctly and insert screws or bolts into their respective holes by hand tighten or using the proper hand tool. Only tighten when step is completed or when instructed to do so.



3 Use cardboard or carpet area when assembling furniture to prevent scratches. Make sure the furniture rests on a flat and level surface with each leg evenly touching the floor.



4 ALWAYS have at least two people to help with transporting and assembling the product to avoid any potential injury and/or damage.



5 Make sure all parts are properly aligned, then use the appropriate hand tool to completely tighten the bolts or screws. Do not use power tools and do not overtighten.



6 Save the instructions and store any supplied tool for later maintenance. After two weeks, check and tighten any loose hardware and repeat again every six months thereafter.

IT IS THE USER'S RESPONSIBILITY TO MAINTAIN THE FURNITURE. THE HARDWARE MAY LOOSEN OVER TIME AND MAY CAUSE THE FURNITURE TO BE WOBBLY AND UNABLE TO SUPPORT ITS INTENDED WEIGHT CAPACITY. THIS MAY LEAD TO COLLAPSE AND MAY CAUSE SERIOUS INJURY.



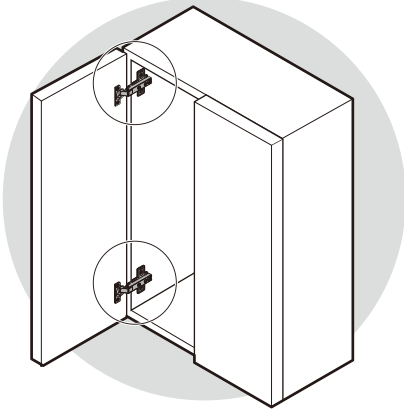
FAILURE TO FOLLOW THE GUIDELINES ABOVE MAY RESULT IN INJURY AND/OR PROPERTY DAMAGE.

# PRE-ASSEMBLE INTRODUCTION

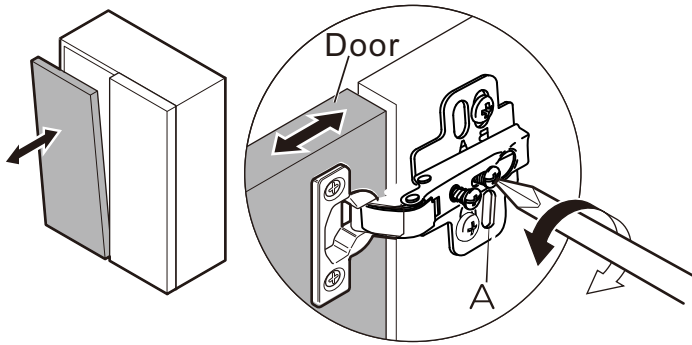
Unless you are particularly adept at assembling flat-pack/knock-down furniture, we understand building ready-to-assemble furniture can be a frustrating experience for some. To help avoid confusion and to make the assembly process quicker and smoother, we have provided some helpful tips. Before you begin the assembly, please read the following

- 1 Due to the size and/or weight on most of the ready-to-assemble furniture, it is highly recommended that the assembly should be done near the area of its intended location. Make sure you have enough space to move around during the assembly. Always have at least two people to help with transporting and assembling of the product to avoid any potential injury and/or damage.
- 2 To protect from damage, assemble the item on a clean, protective surface, such as on a carpet or cardboard.
- 3 Make sure you have taken all the parts and hardware out of their packaging. Do not throw away packaging material until assembly is completed.
- 4 Make sure all parts and hardware are accounted by comparing the actual parts and hardware to the list provided in the assembly instructions. Also check for irregularity such as crack, flaw or improperly drilled hole. If there is any problem or missing piece, please contact the manufacturer or the supplier. By having the model number, part number and a brief description of the problem ready will help expedite the replacement process.
- 5 Read the entire instructions and view the diagrams first before assembling. Arrange your parts in order of use and group the identical hardware together will make it easier to grab each piece as you begin to assemble.
- 6 During the assembly process, make sure all parts are properly aligned before tighten with the tool provided or required for the assembly. Do not use power tools and do not over tighten.
- 7 When applying glue to the wood dowels to bond the parts together, please be absolutely certain that the parts are correct and line up with each other (refer to diagrams and take notice of the various pre-drilled hole locations). When in doubt, assemble the parts together first and if the parts fit right, then apply glue to the wood dowels.

# HINGE ADJUSTMENT



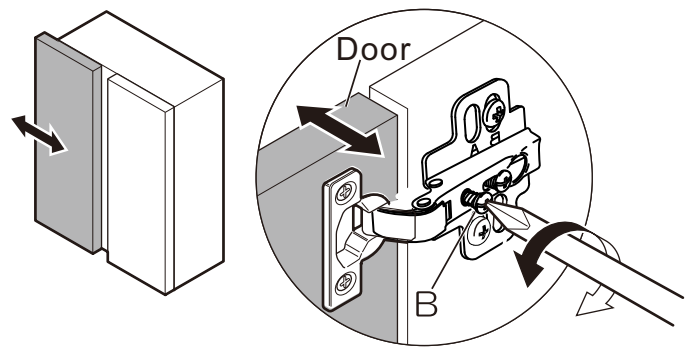
## 1 Depth Adjustment



## European-Style Hinge Adjustment

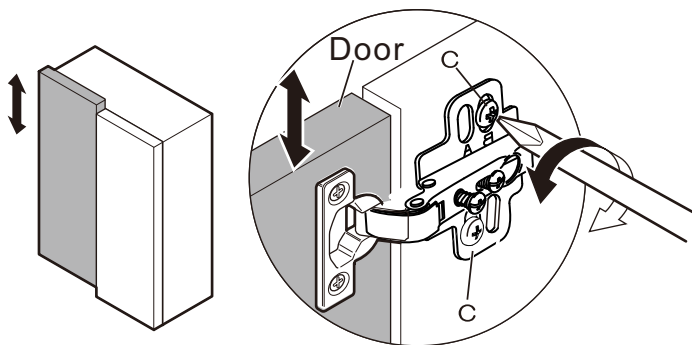
The screw closest to the back of the cabinet (A) is the depth screw and moves the doors in and out. Use this screw to adjust how far out or in the doors are in comparison to your cabinet and to the other cabinet doors and drawers surrounding it. Loosen the screw and manually push or pull the door to adjust it to the position you want. Firmly tighten the screws to secure the door. Close the cabinet doors to see whether the fit is satisfactory. Repeat the process if adjustment is still needed. If possible, avoid maxing out the adjusting screw for it may cause unwanted problems.

## 2 Side-to-Side Adjustment



The screw closest to the cabinet door (B) allows the doors to move from side to side. Tighten this screw (clockwise) to move this corner of the door further toward the frame; loosen it (counterclockwise) to move the door away from the frame. This adjustment can also be used to correct a door that is not hanging straight. If the top is further to the left or right than the bottom, adjust the top and bottom hinges separately to correct the tilt. Close the cabinet doors to see whether the fit is satisfactory. Repeat the process if adjustment is still needed. If possible, avoid maxing out the adjusting screw for it may cause unwanted problems.

## 3 Height Adjustment



Two screws (C), located at the top and bottom of the hinge, mount the hinge to the cabinet. Turn these first to make sure the door is secure. If the door is still too high or low, loosen these screws slightly and then lift or lower the door until it is in the position you want. Firmly tighten the screws to secure the door. Remember to support the door as you loosen these screws or it could drop completely out of its initial position. Close the cabinet doors to see whether the fit is satisfactory. Repeat the process if adjustment is still needed.

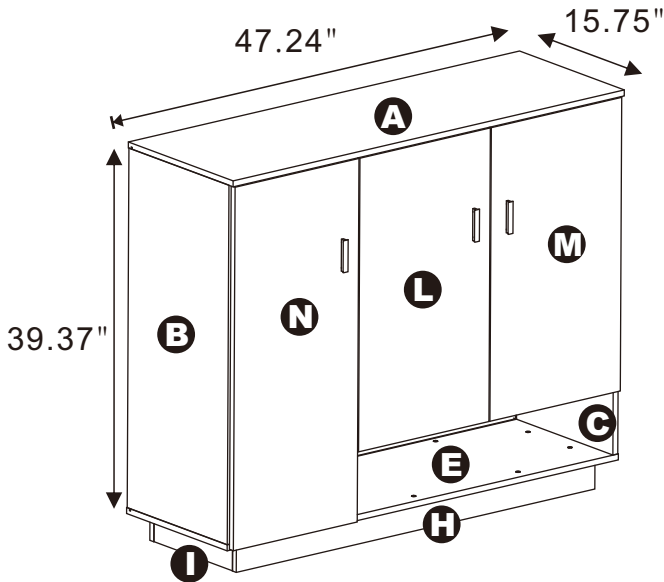
# CHEST OF DRAWERS

## ASSEMBLY INSTRUCTIONS

MODEL # YNJ-1439-1

Please keep for future reference

### PARTS LIST

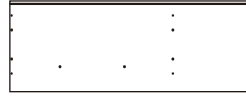


ITEM SIZE :47.24" (W) X 15.75" (D) X39.37" (H)



Before you begin,  
please read assembly  
and Care Advice?and  
re-Assemble  
Introduction?

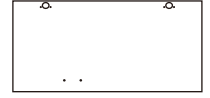
**A 1PCS**



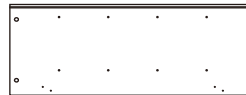
**G 1PCS**



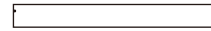
**L 1PCS**



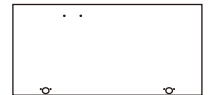
**B 1PCS**



**H 2PCS**



**M 1PCS**



**C 1PCS**



**I 2PCS**



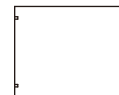
**N 1PCS**



**D 1PCS**



**J 4PCS**



**O 2PCS**



**E 1PCS**



**K 3PCS**



**P 1PCS**

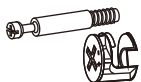


**F 1PCS**



### HARDWARE LIST

**① 10PCS**



**② 10PCS**



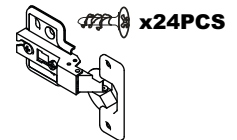
**③ 20PCS**



**④ 28PCS**



**⑤ 6PCS**



**⑥ 3PCS**



x6PCS

**⑦ 6PCS**



**⑧ 1PC**



**⑨ 1PC**



**⑩ 6PCS**



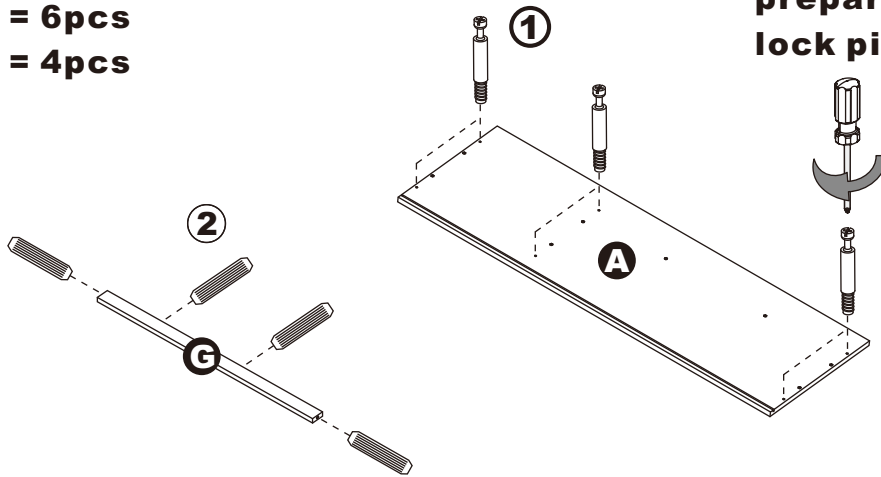
# ASSEMBLY INSTRUCTIONS

## STEP : 1

Hardware 1 = 6pcs

Hardware 2 = 4pcs

prepare and screw cam lock pin into panels



## STEP : 2

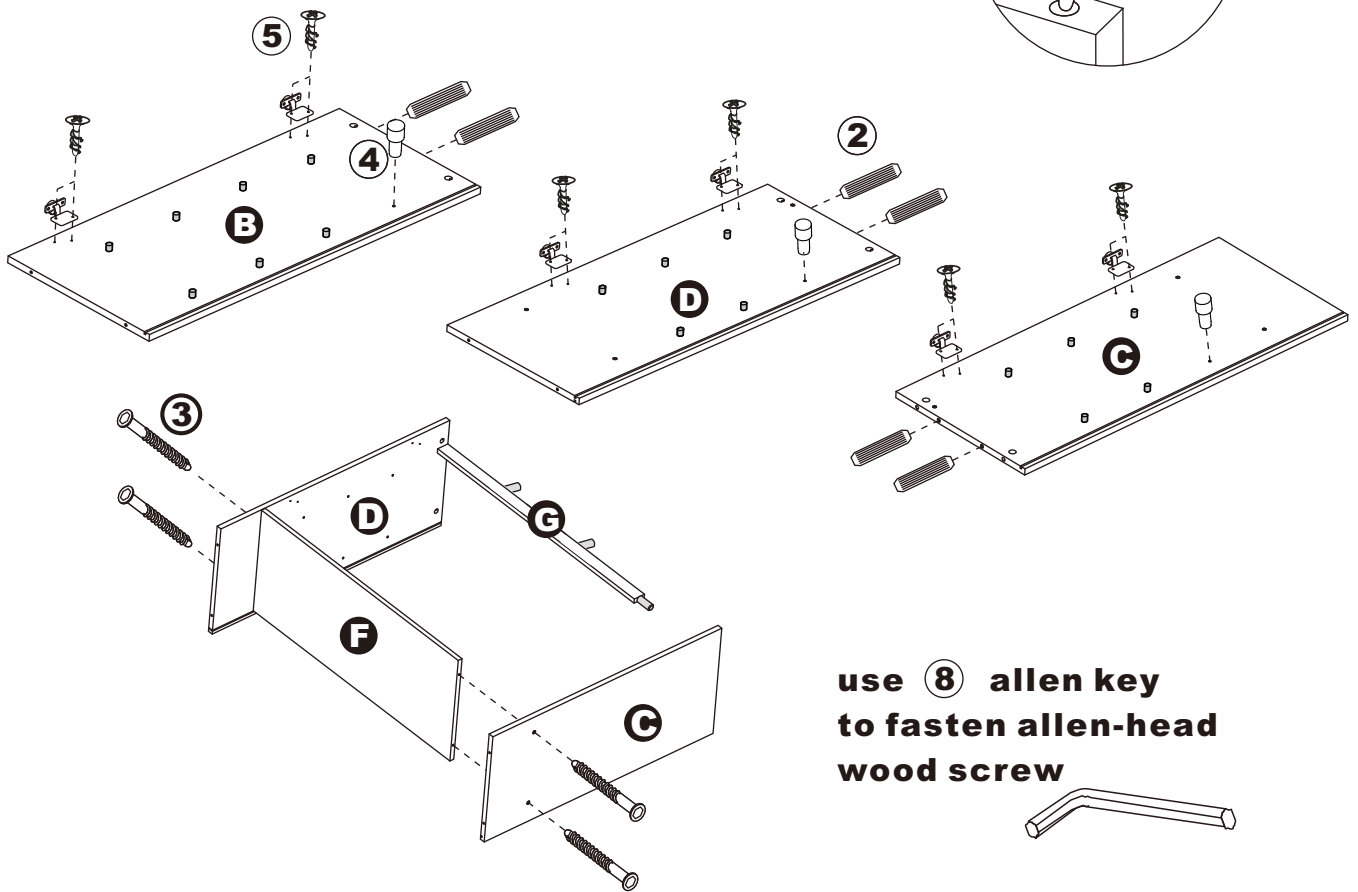
Hardware 2 = 6pcs

Hardware 3 = 4pcs

Hardware 4 = 28pcs

Hardware 5 = 6pcs

prepare and insert wood dowels into panels



use ⑧ allen key to fasten allen-head wood screw

# ASSEMBLY INSTRUCTIONS

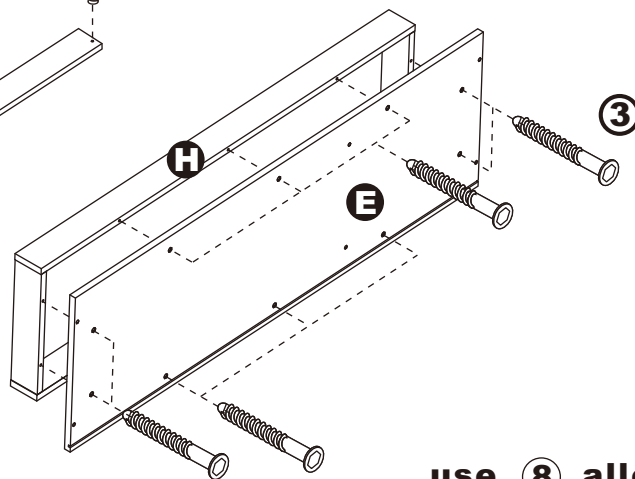
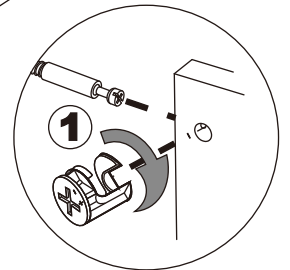
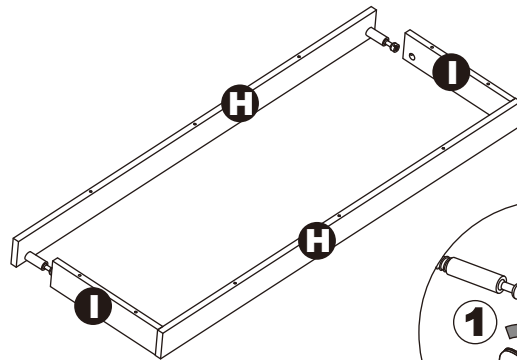
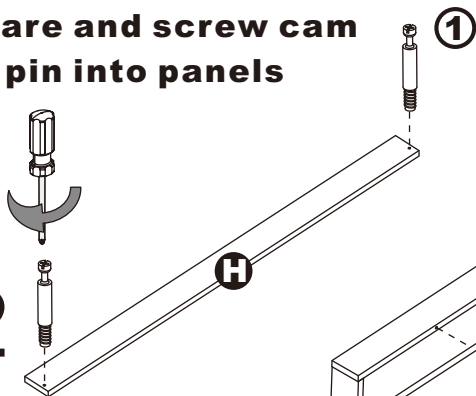
## STEP : 3

Hardware 1 = 4pcs

Hardware 3 = 10pcs

prepare and screw cam  
lock pin into panels

X2

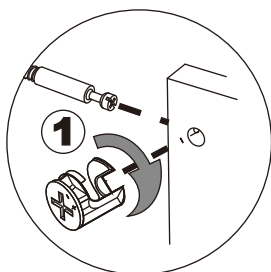
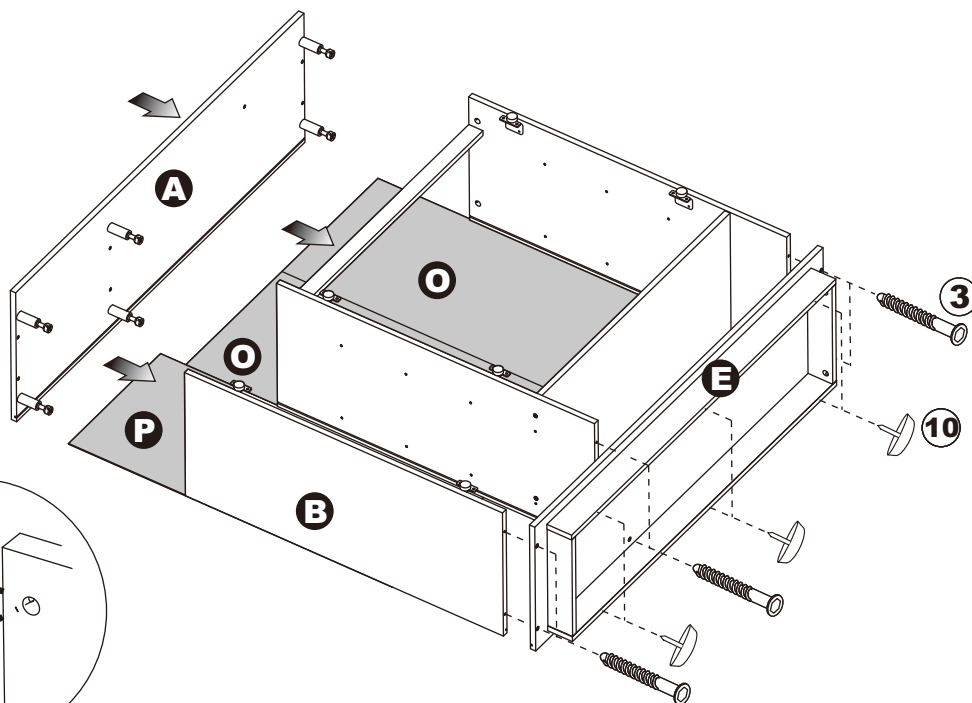


## STEP : 4

Hardware 3 = 6pcs

Hardware 10 = 6pcs

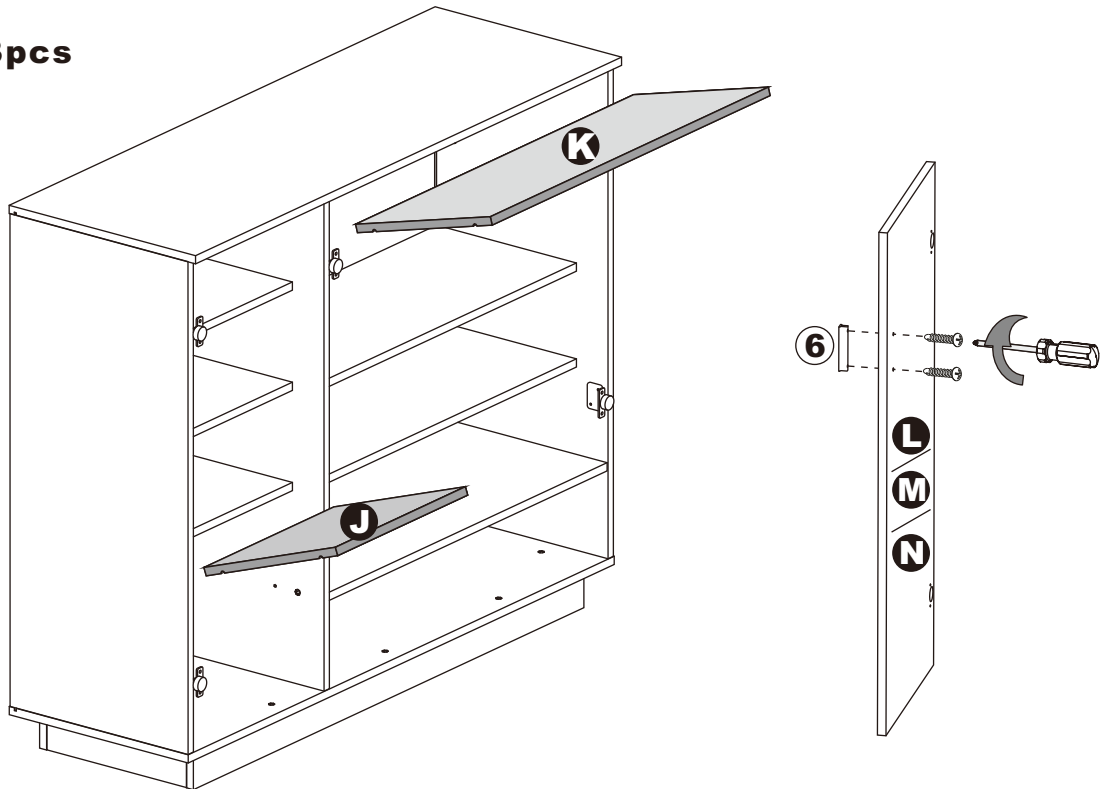
use 8 allen key  
to fasten allen-head  
wood screw



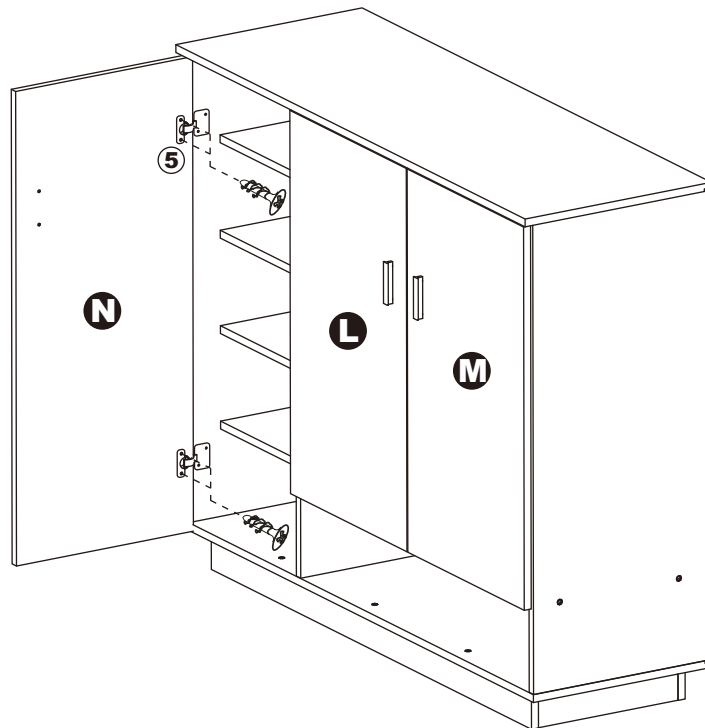
# ASSEMBLY INSTRUCTIONS

## STEP : 5

Hardware 6 = 3pcs



## STEP : 6

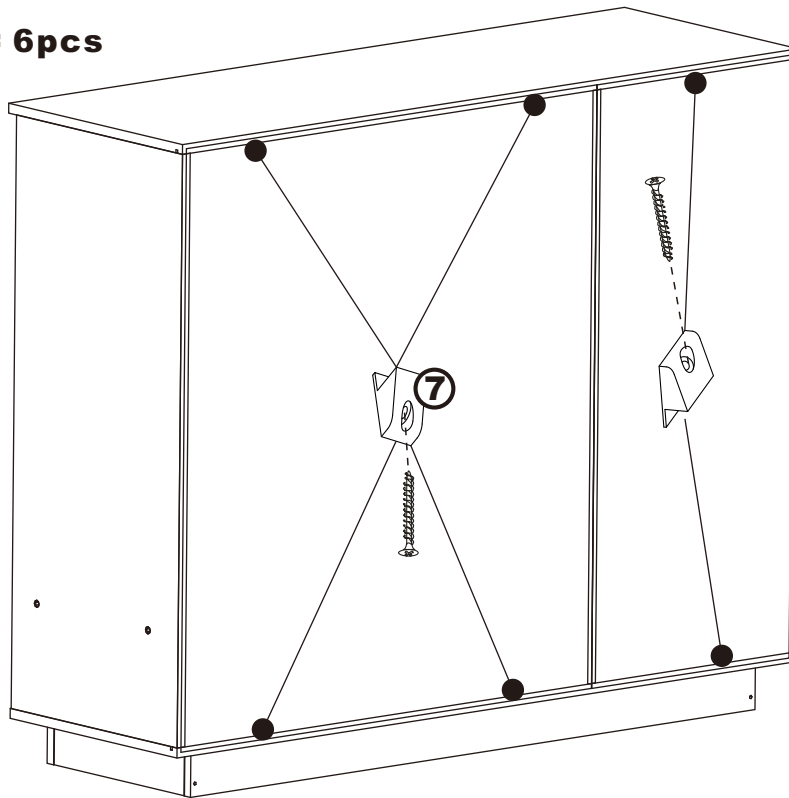




# ASSEMBLY INSTRUCTIONS

## STEP : 7

Hardware 7 = 6pcs



**ASSEMBLY IS COMPLETED**

**Make sure the item on a flat surface and it does not feel loose or wobbly. If it does double check that the bolts/screws are secured and properly tighten.**