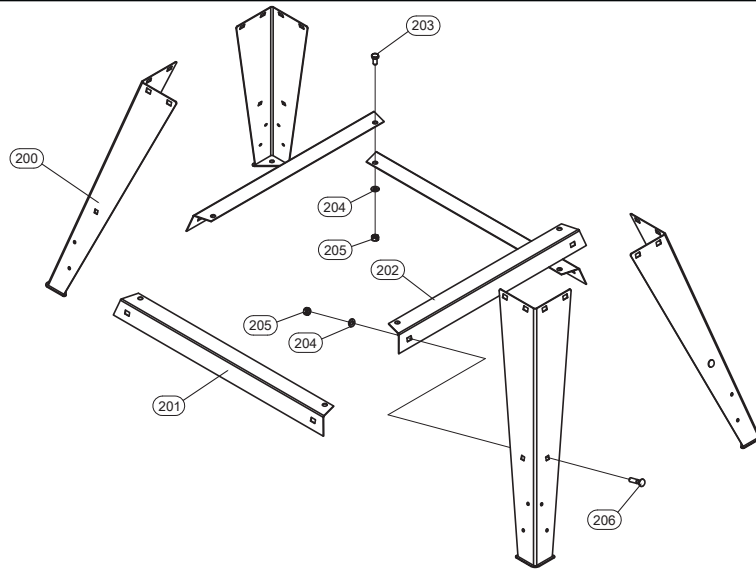


DIAGRAM

STAND & MITER GAUGE

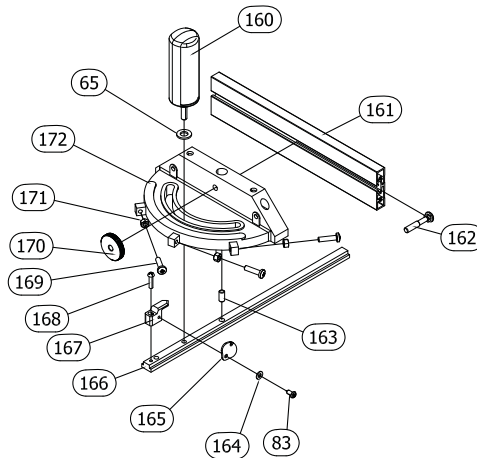
STAND



IMPORTANT: When ordering replacement parts, always give the model number, serial number of the machine and part number. Also a brief description of each item and quantity desired.

PART #	DESCRIPTION	SPEC.	QTY	PART #	DESCRIPTION	SPEC.	QTY
90040-200	LEG		4	90040-204	WASHER		8
90040-201	LONG CROSS BRACE		2	90040-205	NUT		8
90040-202	SHORT CROSS BRACE		2	90040-206	CARRIAGE BOLT	M8 X16	24
90040-203	HEX HEAD BOLT	M8 X 16	4				

MITER GAUGE

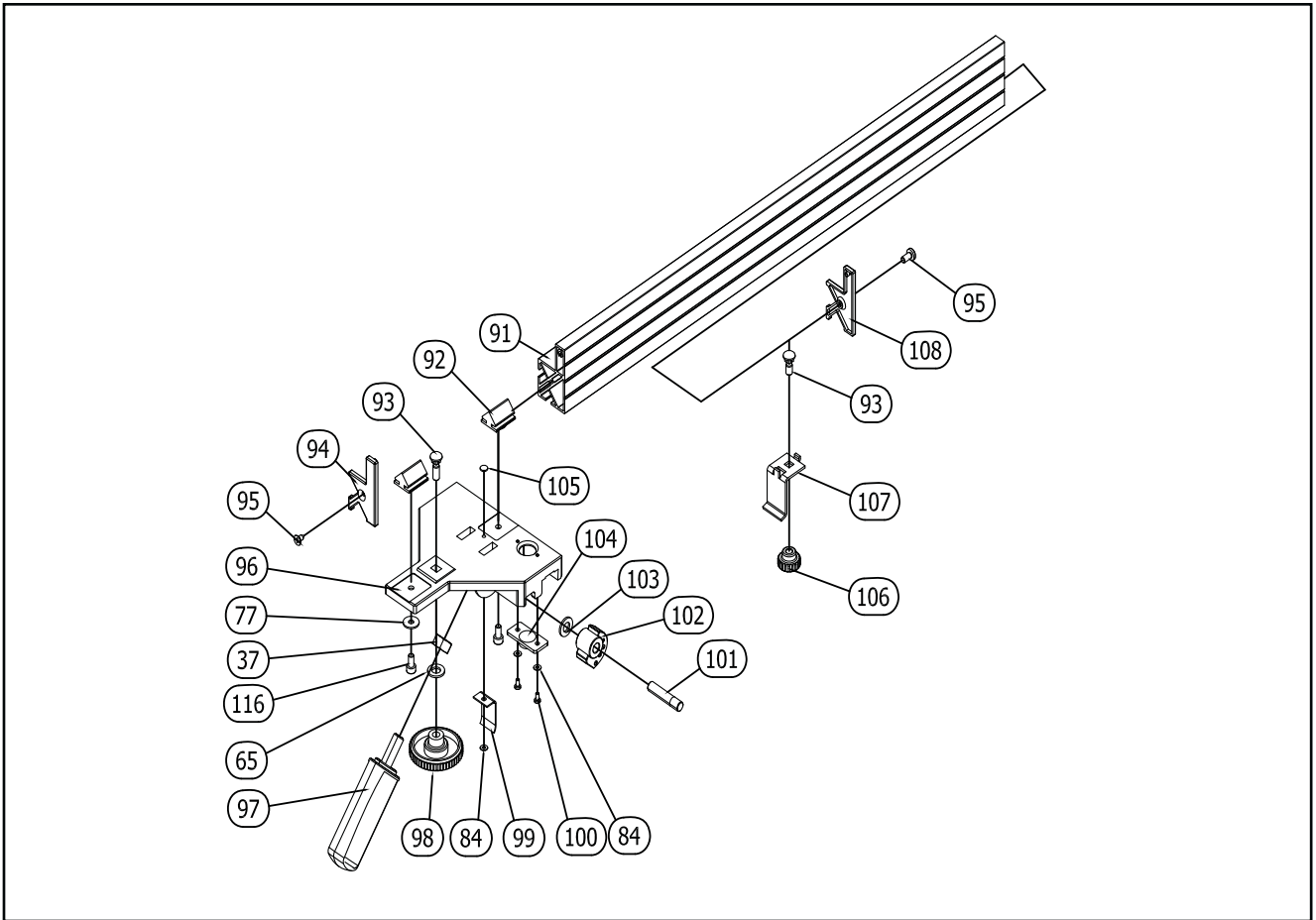


IMPORTANT: When ordering replacement parts, always give the model number, serial number of the machine and part number. Also a brief description of each item and quantity desired.

PART #	DESCRIPTION	SPEC.	QTY	PART #	DESCRIPTION	SPEC.	QTY
90040-65	FLAT WASHER		1	90040-166	GUIDE BAR		1
90040-83	SELF-TAPPING SCREW	ST3.5X9.5	1	90040-167	ANGLE POINTER		1
90040-160	KNOB		1	90040-168	SCREW	M4X20	1
90040-161	MITER GAUGE FENCE		1	90040-169	SCREW	M5X20	3
90040-162	CARRIAGE BOLT	M6X35	1	90040-170	KNURLED NUT	M6	1
90040-163	PIN		1	90040-171	NUT	M5	3
90040-164	WASHER		1	90040-172	MITER GAUGE BODY		1
90040-165	TAB		1				

DIAGRAM

RIP FENCE

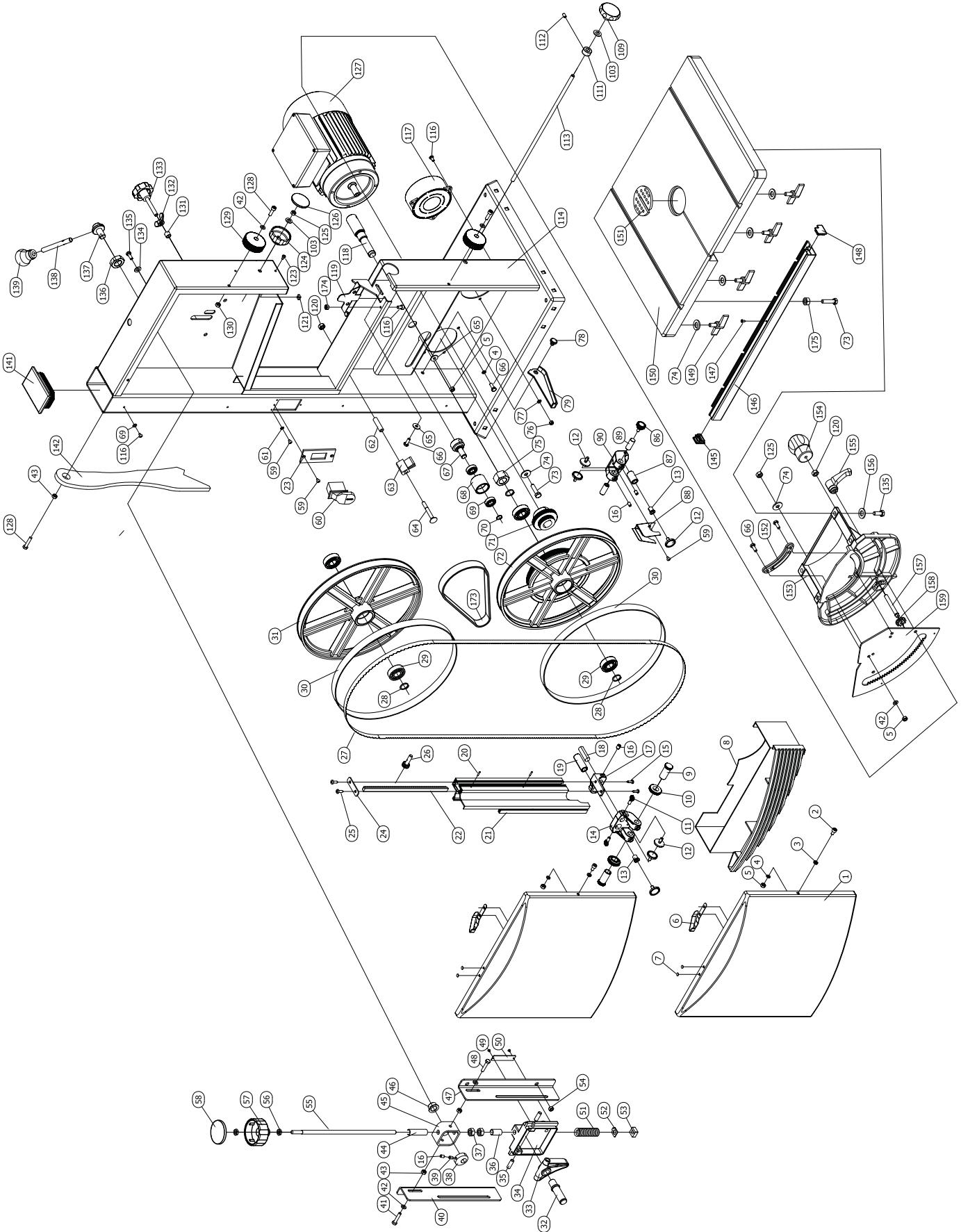


IMPORTANT: When ordering replacement parts, always give the model number, serial number of the machine and part number. Also a brief description of each item and quantity desired.

PART #	DESCRIPTION	SPECIFICATIONS	QTY
90040-37	HEX NUT	M10	3
90040-65	FLAT WASHER	6	1
90040-77	FLAT WASHER	5	5
90040-84	FLAT WASHER	3	2
90040-91	RIP FENCE FACE		1
90040-92	GUIDE RAIL		2
90040-93	CARRIAGE BOLT	M6X20	1
90040-94	END CAP		1
90040-95	SELF-TAPPING SCREW	ST4.2X13	2
90040-96	SUPPORT		1
90040-97	HANDLE	M10	1
90040-98	NUT	M6	1
90040-99	FENCE CLAMP FLAP		1
90040-100	PHILLIPS SCREW	M3X6	2
90040-101	SHAFT		1
90040-102	ECCENTRIC BLOCK		1
90040-103	LOCK WASHER	A16	2
90040-104	FENCE POINTER		1
90040-105	RIVET	3X6	1
90040-106	THUMBSCREW		1
90040-107	GUIDE HOOK		1
90040-108	END CAP		1

DIAGRAM

BANDSAW



PARTS LIST

BANDSAW

IMPORTANT: When ordering replacement parts, always give the model number, serial number of the machine and part number. Also a brief description of each item and quantity desired.

PART #	DESCRIPTION	SPECIFICATIONS	QTY
90040-1	WHEEL COVER DOOR		2
90040-2	CAP SCREW	M6X16	2
90040-3	RING		2
90040-4	LOCK WASHER	6	6
90040-5	CARRIAGE BOLT	M6	5
90040-6	SPRING		2
90040-7	RIVET	4X8	5
90040-8	DUST TRAY		1
90040-9	ROLLER GUIDE SHAFT		2
90040-10	KNURLED NUT		2
90040-11	THUMBSCREW	M6	2
90040-12	ROLLER		6
90040-13	THRUST BEARING SHAFT		2
90040-14	UPPER GUIDE ASSEMBLY		1
90040-15	SELF-TAPPING SCREW	ST4.8X22	2
90040-16	SET SCREW	M6X10	2
90040-17	GUIDE BRACKET		1
90040-18	FIXED LINK		1
90040-19	ROLLER GUIDE SHAFT		1
90040-20	PIN	2.5X12	2
90040-21	UPPER BLADE GUARD		1
90040-22	RACK		1
90040-23	FIXED PLATE		1
90040-24	STEEL COVER PLATE		1
90040-25	SELF-TAPPING SCREW	ST4.8X22	2
90040-26	GEAR SHAFT		1
90040-27	BLADE	2240X12.5X0.5 (4 T.P.I)	1
90040-28	RETENTION RING		3
90040-29	BEARING	80203	4
90040-30	TIRE		2
90040-31	UPPER WHEEL		1
90040-32	SHAFT		1
90040-33	FIXED BLOCK		1
90040-34	FIXED BLOCK		1
90040-35	CYLINDRICAL PIN	8 H8X24	2
90040-36	RING		1
90040-38	ECCENTRIC BLOCK		1
90040-39	SET SCREW	M6X6	1
90040-40	LEFT GUIDE PLATE		1
90040-41	HEX BOLT	M6X25	1
90040-42	FLAT WASHER	6	2
90040-43	HEX NUT	M6	6
90040-44	RING		1
90040-45	SQUARE TUBE		1
90040-46	RING		1
90040-47	RIGHT GUIDE PLATE		1
90040-48	HEX BOLT	M6X35	1
90040-49	SCREW	M3X5	2
90040-50	GRADUATED TENSION SCALE		1

PARTS LIST

BANDSAW

IMPORTANT: When ordering replacement parts, always give the model number, serial number of the machine and part number. Also a brief description of each item and quantity desired.

PART #	DESCRIPTION	SPECIFICATIONS	QTY
90040-51	SPRING		1
90040-52	POINTER		1
90040-53	SQUARE NUT	M10	1
90040-54	FLANGE NUT	M8	9
90040-55	ADJUSTING POLE		1
90040-56	HEX NUT	M8	2
90040-57	TENSION KNOB		1
90040-58	TENSION KNOB COVER		1
90040-59	CAP SCREW	M4X6	4
90040-60	SWITCH		1
90040-61	WASHER	4	2
90040-62	RING		1
90040-63	BRUSH		1
90040-64	CARRIAGE BOLT	M8X100	1
90040-65	FLAT WASHER	6	1
90040-66	HEX HEAD BOLT	M6X16	1
90040-67	SHAFT		1
90040-68	TENSION ROLLER		1
90040-69	BEARING	80101	2
90040-70	RETENTION RING		1
90040-71	MOTOR PULLEY		1
90040-72	LOWER WHEEL		1
90040-73	HEX BOLT	M8X35	2
90040-74	FLAT WASHER	8	3
90040-75	HEX NUT	M20X1.5	1
90040-76	HEX NUT	M5	3
90040-77	FLAT WASHER		5
90040-78	BOLT		1
90040-79	HOOK PLATE		1
90040-86	KNOB		1
90040-87	SHAFT		1
90040-88	GUIDE BRACKET		1
90040-89	SHAFT		2
90040-90	GUIDE BRACKET		1
90040-109	KNOB		1
90040-111	RETENTION RING		1
90040-112	SCREW	5X8	1
90040-113	LEAD SCREW		1
90040-114	FRAME		1
90040-116	PHILLIPS SCREW	M5X12	9
90040-117	MULTIPLE DUST PORT		1
90040-118	SHAFT		1
90040-119	LOWER BLADE GUARD		1
90040-120	FLANGE NUT	M8	1
90040-121	SQUARE NUT		2
90040-123	SELF-TAPPING SCREW	ST4.2X9.5	2
90040-124	KNOB		1
90040-125	CARRIAGE BOLT	M8	1
90040-126	KNOB COVER		1
90040-127	MOTOR		1

PARTS LIST

BANDSAW

IMPORTANT: When ordering replacement parts, always give the model number, serial number of the machine and part number. Also a brief description of each item and quantity desired.

PART #	DESCRIPTION	SPECIFICATIONS	QTY
90040-128	SCREW	M6X25	2
90040-129	KNOB		2
90040-130	CARRIAGE BOLT	M6	1
90040-131	RING		1
90040-132	NUT	M8	1
90040-133	KNOB		1
90040-134	WASHER	8	4
90040-135	HEX BOLT	M8X16	8
90040-136	NUT	M20X1.5	1
90040-137	HANDLE SEAT		1
90040-138	HANDLE LEVER		1
90040-139	KNOB BALL		1
90040-141	END CAP		1
90040-142	PUSHING STICK		1
90040-145	COVER		1
90040-146	SLIDE RAIL		1
90040-147	SELF-TAPPING SCREW	ST3.5X9.5	1
90040-148	RIGHT COVER		1
90040-149	THUMBSCREW		4
90040-150	TABLE		1
90040-151	TABLE INSERTION		1
90040-152	GUIDE PLATE		1
90040-153	SWINGING STRUT		1
90040-154	KNOB		1
90040-155	LOCK KNOB		1
90040-156	WASHER	8	4
90040-157	SHAFT		1
90040-158	GEAR		1
90040-159	SUPPORT		1
90040-160	KNOB		1
90040-161	MITER GAUGE FACE BODY		1
90040-162	CARRIAGE BOLT	M6X35	1
90040-163	PIN		1
90040-164	WASHER	4	1
90040-165	TAB		1
90040-166	GUIDE BAR		1
90040-167	ANGLE POINTER		1
90040-168	SCREW	M4X20	1
90040-169	SCREW	M5X20	3
90040-170	KNURLED NUT	M6	1
90040-171	NUT	M5	3
90040-172	SCALE		1
90040-173	RIBBED BELT		1
90040-174	NUT	M5	1
90040-175	HEX NUT	M8	1