



Lounger Hydro+Microbubble +Heat Massage Walk In Bathtub



OA2660HMH-L-HB Left Drain



OA2660HMH-R-HB Right Drain

Actual Size: 26.75'' W x 59'' L x 43'' H
Shipping Size: 29'' W x 61'' L x 50'' H
Shipping Weight: 380lbs.
Net Weight: 220lbs.
Water Capacity: 90 gal. US (unoccupied)
55-75 gal. US (occupied)
Approx. Drain Time: +/- 2 minutes (unoccupied bathtub)
at ideal home plumbing conditions
Approx. Fill Time: +/- 14 minutes (unoccupied bathtub)
based on in-house water pressure

Options:

- Left or Right Drain/Door

Included Features:

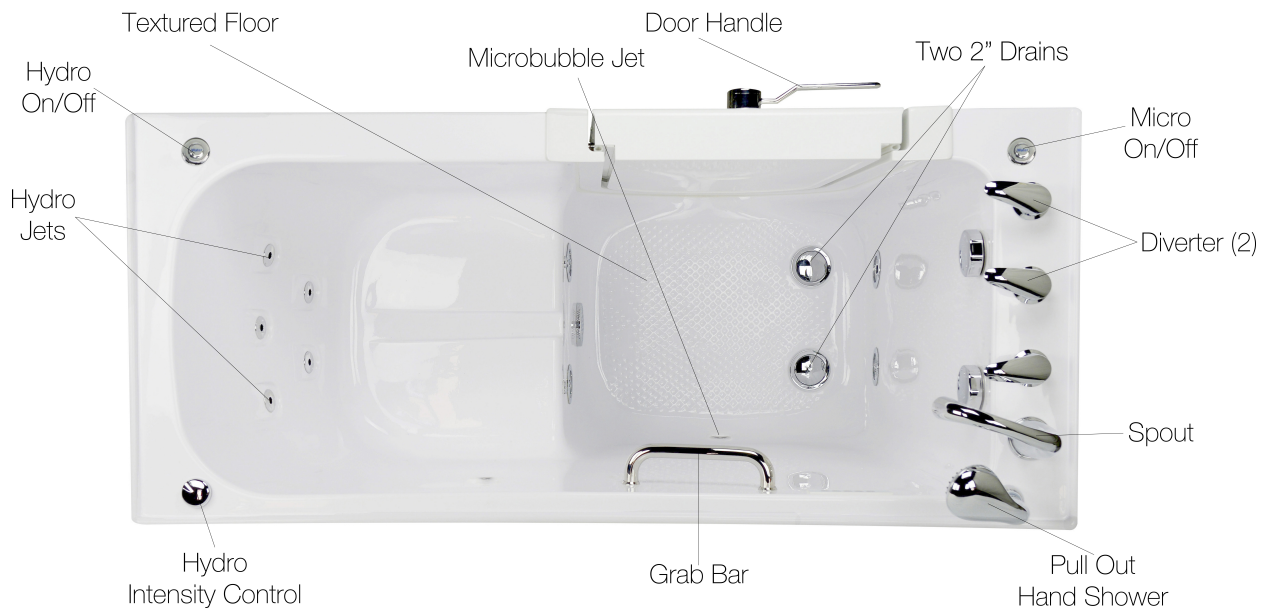
1. Acrylic Tub Shell:
 - High quality acrylic
 - Excellent color uniformity
 - High Gloss White Finish
 - Fiberglass Reinforced
 2. Low threshold step in 7''
 3. Stainless Steel Frame with Adjustable Leveling Legs
 4. Seat: 20 3/4'' W x 17'' H x 14 1/4'' L
 5. Two (2) front and one (1) end removable access panels
 6. Heated seat and backrest
 7. Wall and deck mounted stainless steel safety grab bar in plated chrome finish
 8. Hydro Massage System: (5A 600W)
 - Four (4) adjustable and five (5) fixed hydro jets
 - Hydro Massage Air Flow Intensity Control
 - 5 AMP Pump
 - In-line water heater (5.5AMP 650 w)
 9. MicroBubble Therapy System (10AMP 1,200W)
 - 1HP Pump
 - Pressure Vessel
 - Air Switch and one (1) jet
 - Agitator Valve
 10. Five-Piece Fast Fill Faucet Set with Chrome Finish
 - T18 GPM (Average) @ 60 PSI
 - Designer spout
 - Hot and cold lever handles
 - Pull out, hand held, 5 ft. retractable stainless steel braided hose
- Plumbing:**
- Two (2) x 4' long stainless steel braided water supply lines with 1/2'' IPS connectors
 - Two (2) x 2'' floor drains
 - Two (2) PVC 2'' drain elbows
- Electrical:**
- Electrical requirement is one dedicated 120 V electrical line with a 20AMP GFCI standard three prong outlet
- Warranty:**
- Lifetime limited warranty on acrylic walk in tub shell, frame, and door.
 - 5 Year parts warranty*

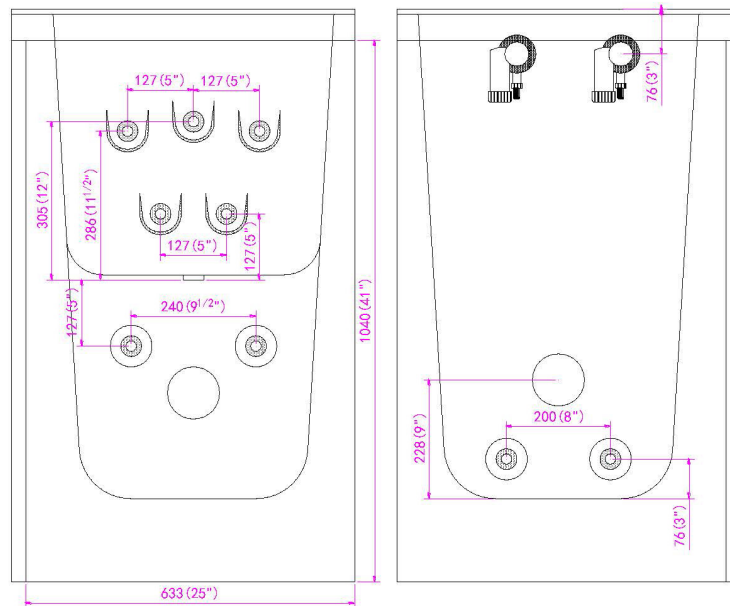
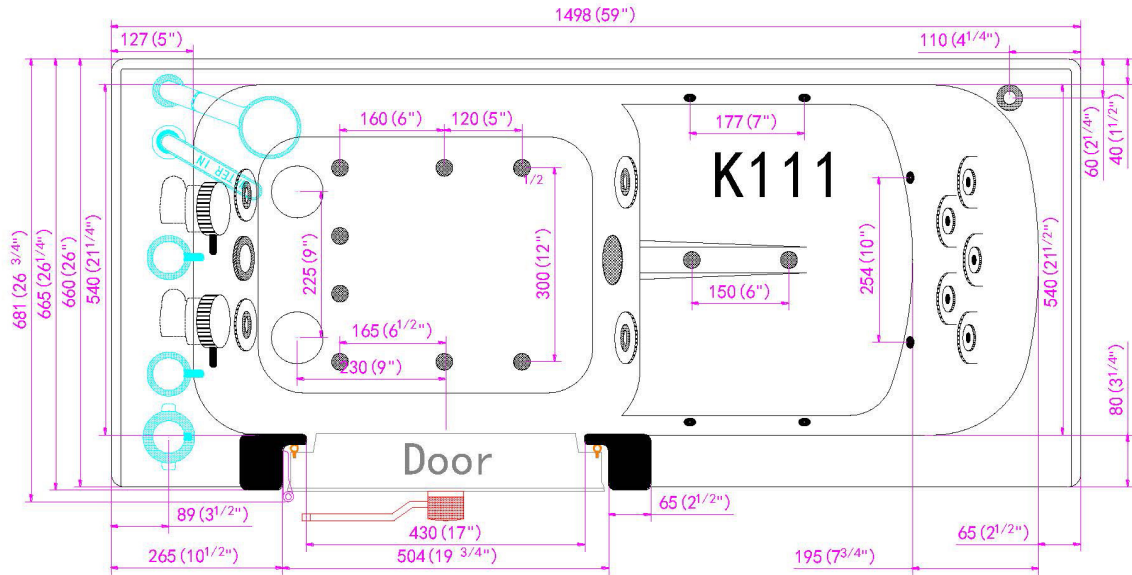
Lounger Hydro+Microbubble +Heat Massage Walk In Bathtub

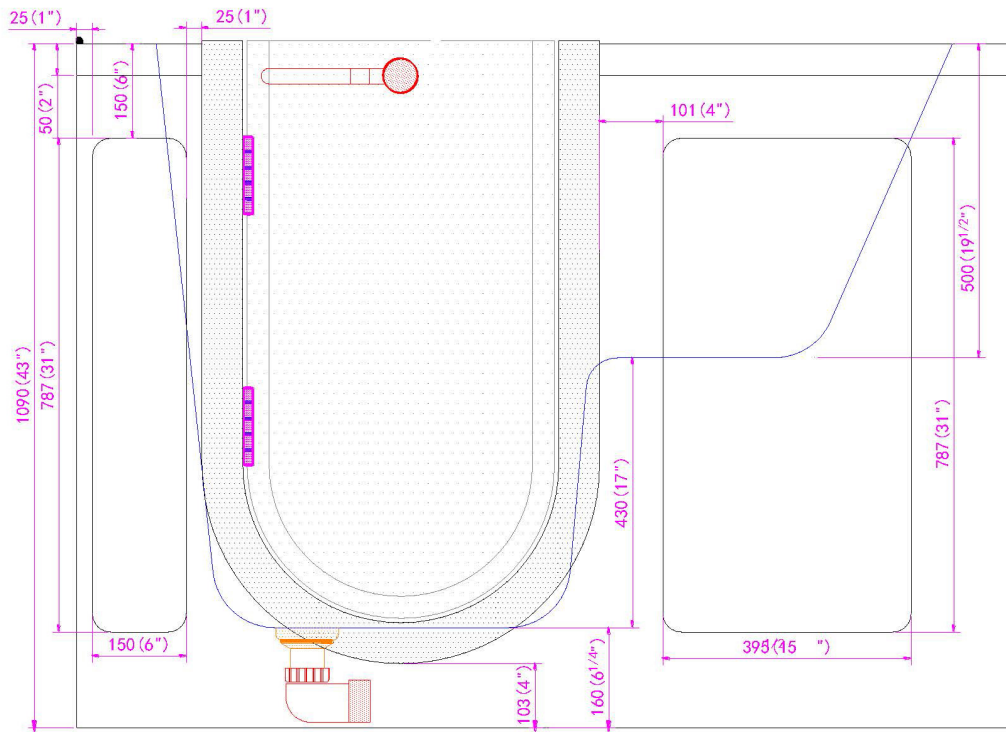


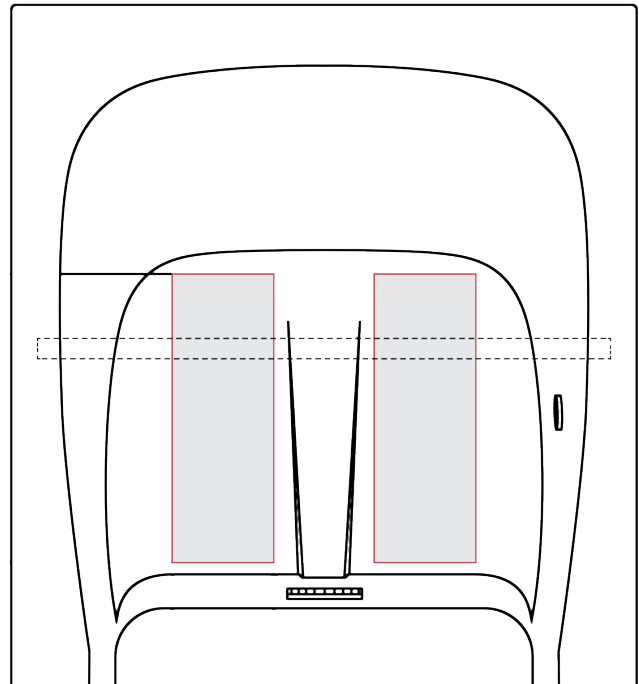
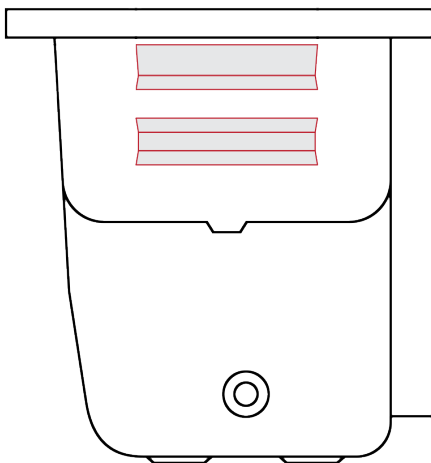
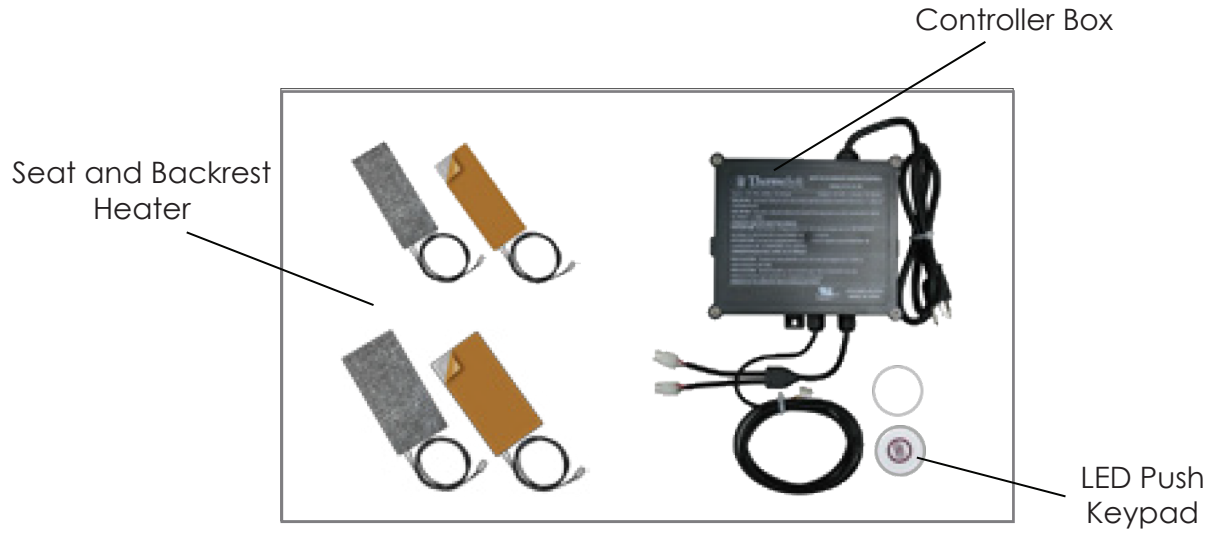
Hk c`FYa cj UWyž
F Yj YfgjVY`9bX`
5WwYgg`DUbY`g

HcY`? M_Yf
5WwYgg`DUbY`









Heated seat and backrest come assembled with a digital push control usually installed on the large access panel.