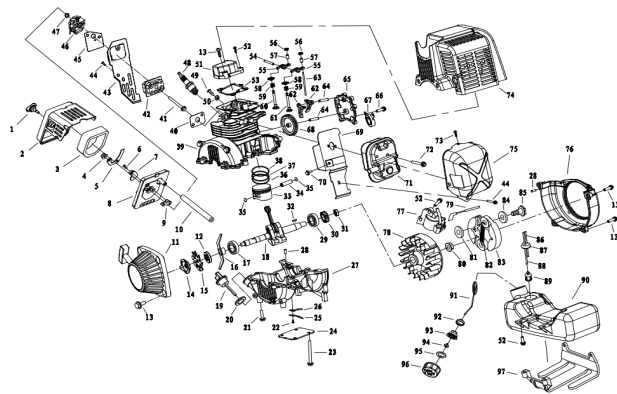


BOF31 ENGINE

| Order Number | Drawing Number | SPARE PARTS English Name | Quantity |
|--------------|-----------------|---------------------------------------|----------|
| 2 | PA6+GF30 | Air filter outer cover | 1 |
| 3 | 海绵 | Filter cotton | 1 |
| 5 | Q235 0.8 | Oil baffle plate | 1 |
| 7 | PA6+GF30 | Choke valve | 1 |
| 8 | PA6+GF30 | Air filter base | 1 |
| 9 | PA6+GF30 | Choke lever | 1 |
| 11 | PA6+GF30 | Starter cover | 1 |
| 11 | POW | Rope wheel | 1 |
| 11 | PA6+GF30 | Start handle | 1 |
| 11 | PA6 | Start poking claw support | 1 |
| 14 | Q235 0.1.6 (焊合) | Dial | 1 |
| 15 | Q235 0.1 | Small blades | 1 |
| 18 | | Drankshaft connecting rod piston assy | 1 |
| 19 | PA6+GF30 | Oil dipstick | 1 |
| 20 | 丁腈橡胶 | Oil dipstick seal ring | 1 |
| 24 | 0.2 | Aluminum plate | 1 |
| 25 | Q235 | Plate | 1 |
| 26 | 65Mn | Reed | 1 |
| 27 | ADC12 | Drankcase | 1 |
| 33 | | Piston | 1 |
| 34 | | Piston pin | 1 |
| 35 | 65Mn4*28 | Piston pin cheek ring | 2 |
| 36 | | Piston ring oil ring assy | 1 |
| 37 | | Piston ring second ring | 1 |
| 38 | | Piston ring first ring | 1 |
| 39 | ADC12 | Cylinder block | 1 |
| 40 | 非石棉耐油纸板 o=0.5 | Inlet gasket | 1 |
| 42 | PA6+GF30 | Inlet pipe | 1 |
| 43 | Q235 | Intake pipe baffle | 1 |
| 45 | 非石棉耐油纸板 o=0.5 | Carburator gasket | 1 |
| 46 | | Carburator | 1 |
| 46 | | Spark plug | 1 |
| 51 | PA6+GF30 | Cylinder head assy | 1 |
| 53 | 氟橡胶 | Cylinder head seal ring | 1 |
| 54 | 45# | Upper rocker arm roller pin | 1 |
| 55 | | Upper rocker arm | 1 |
| 58 | | Valve buckle | 2 |
| 59 | 65Mn=1.5 | Valve spring | 2 |
| 60 | | Intake valve | 1 |
| 61 | | Exhaust valve | 1 |
| 62 | 铁基粉末冶金 | Lower Arm | 2 |
| 63 | 45# | Tapert | 2 |
| 64 | 45# | Cam pin d#P25.6 | 1 |
| 64 | 45# | Lower rocker arm roller pin | 1 |
| 65 | ADC12 | Side cover | 1 |
| 68 | PA66 | Cam | 1 |
| 69 | Q235 0.0.5 (焊合) | Muffler partition | 1 |
| 71 | Q235 | Muffler assy | 1 |
| 74 | PA6+GF30 | Cylinder cover | 1 |
| 75 | Q235 0.0.8 | Muffler cover | 1 |
| 76 | ADC12 | Side cover | 1 |
| 77 | | Ignition coil assy | 1 |
| 78 | | Fly wheel | 1 |
| 79 | 长度39mm左右 | Flamout line | 1 |
| 83 | | Clutch | 1 |
| 97 | PA6+GF30 | Oil seal support | 1 |
| 86-96 | PE | Oil seal assy | 1 |
| | Q235 | Cam anti wear shim | 1 |
| | 氟橡胶 | Valve gasket | 1 |
| | 丁腈橡胶 | Oil return pipe | 1 |
| | 氟橡胶 | Valve oil seal | 1 |
| | 铁基粉末冶金 | Intake Valve Seat Ring | 1 |
| | 铁基粉末冶金 | Exhaust Valve Seat Ring | 1 |
| | 铁基粉末冶金 | Intake valve guide | 1 |
| | 铁基粉末冶金 | Exhaust valve guide | 1 |
| | 65Mn | Exhaust valve guide spring | 1 |
| | 65Mn | Poking claw | 1 |
| | 65Mn | Starter coil spring | 1 |
| | 非石棉耐油纸板 o=0.5 | Side cover paper washer | 1 |
| | 03 | Start Gord | 1 |
| | 65Mn17*1.5 (红) | Flat gasket | 4 |
| | 胶木 | Drawstring hole | 1 |
| | Q235 | Oil pipe | 1 |
| | Q235 | Intake manifold insert | 2 |



BOF31 TRANSMISSION PART

| Order Number | Drawing Number | SPARE PARTS English Name | Quantity |
|--------------|----------------|--|----------|
| 1 | T.B0B31.01B | Connector Assy B | 1 |
| 2 | GB/T 70.1 | M6x30_Inner hex nut screw assy | 4 |
| 3 | GB/T 70.1 | M6x25_Inner hex nut screw assy | 2 |
| 4 | GB/T 70.1 | M6x12_Inner hex nut screw assy | 3 |
| 5 | T.B0F31.01C | Aluminum working shaft | 1 |
| 5.1 | T.B0F31.01C-1 | Aluminum tube φ25.4x660 | 1 |
| 5.2 | T.WF12601.10 | φ7 Oil bearing assy | 1 |
| 6 | T.B0925.10 | Throttle handle assy C | 1 |
| 7 | GB/T 818 | M5x8_Cross pan head screw | 2 |
| 8 | S002.33302 | Belt connector | 2 |
| 9 | GB/T 818 | M5x10_Cross pan head screw | 2 |
| 10 | GB/T 889.1 | M5_Non metallic insert locking nut | 2 |
| 11 | T.B0B33.16 | P Handle assembly | 1 |
| 11.1 | T.B0B33.16-1 | P Type up handle | 1 |
| 11.2 | T.B0B33.16-2 | P Type below handle | 1 |
| 11.3 | T.B0B33.16-3 | Rubber sleeve | 1 |
| 11.4 | GB/T 41 | M5_Hex nut | 4 |
| 11.5 | GB/T 70.1 | M5x25_Inner hex nut screw assy | 4 |
| 12 | T.B0925.11 | Bearing coupling | 1 |
| 13 | S001.32206 | M6x18_Handle bolt | 1 |
| 14 | GB/T 70.1 | M6x20_Inner hex nut screw assy | 1 |
| 15 | T.WF12601-006A | Rigid axle φ8x762 | 1 |
| 16 | T.WF12601-005 | Small square Hardness axes coupling | 1 |
| 17 | T.WF12601.04A | Aluminum working shaftφ25.4x760H | 1 |
| 17.1 | T.WF12601.04-1 | Aluminum tube φ25.4x760H | 1 |
| 17.2 | S001.33307 | Bayonet pin | 1 |
| 17.3 | GB/T 873 | Internal circlip | 1 |
| 17.4 | T.WF12601.10 | φ7 Oil bearing assy | 3 |
| 18 | T.WF12601-007 | Rigid axle φ7x785 | 1 |
| 19 | T.WF12601.08 | Gear box | 1 |
| 20 | T.B0B33.18C | Plastic protection Guard | 1 |
| 20.1 | T.B0B33.18C-3 | Plastic shield G | 1 |
| 20.2 | T.B0B33.18C-2 | Plastic shield G Press plate | 1 |
| 20.3 | GB/T 845 | ST4.2x10-H-F | 1 |
| 20.4 | S006.34103 | Cover blade adapter | 1 |
| 20.5 | T.B0F31-001 | Nylon spool cutting blade | 1 |
| 20.6 | GB/T 845 | ST4.2x16-H-F | 2 |
| 20.7 | GB/T 845 | ST4.8x20-H-F_Half thread screw | 1 |
| 21 | T.B0B33.14 | Nylon spool assy | 1 |
| 22 | T.B0E43B-15 | 26 Cover fixed baffle | 1 |
| 23 | GB/T 70.1 | M6x25_Inner hex nut half thread screw assy | 2 |
| 24 | S003.33303 | 3 Teeth blade | 1 |
| 25 | S003.34122 | 3 Teeth blade sheath | 1 |
| 26 | T.B0B33-117 | Rigid axle rubber sleeve | 2 |

