

Qsee® quick-start GUIDE

FREEDOM



QT SERIES HD NVRS

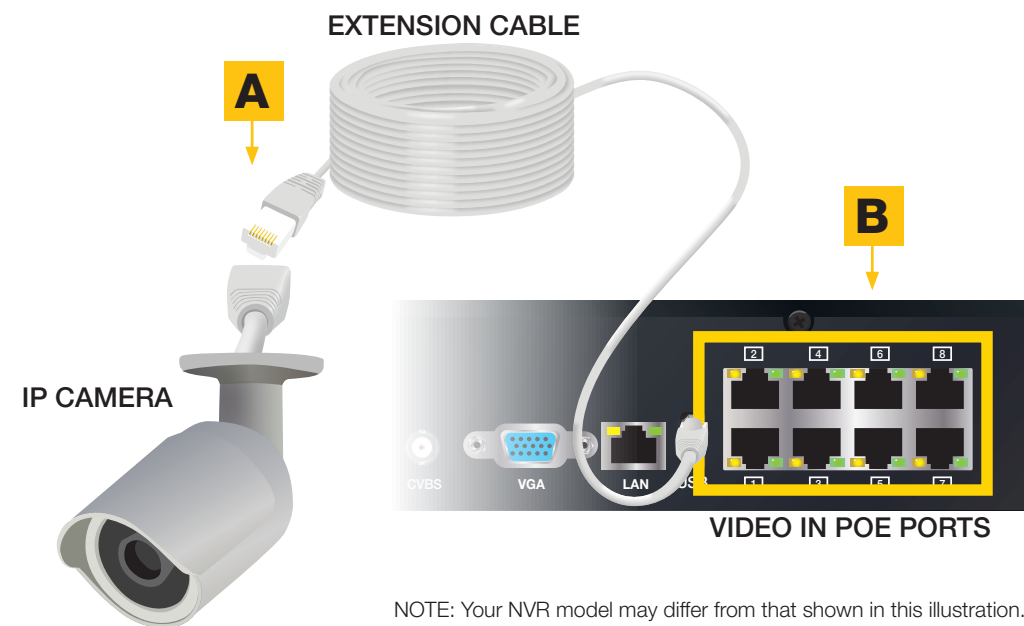
Test cameras and connections prior to mounting.
If specialty camera(s), such as a PTZ, are included in your package, please review instructions for specialty camera(s) before proceeding to Step 1.

STEP 1 CONNECT YOUR CAMERAS

A	B
Plug the CAT5E Extension Cable into the camera's network port.	Plug the other end of the Extension Cable into one of the POE ports on the back of the NVR.

Repeat steps A & B for each camera.

To add remote cameras to your NVR, see the end of this guide.



When doing final installation, connect your cameras one at a time. The NVR will assign cameras a channel in the order that they are connected.

STEP 2 CONNECT TO VIDEO DISPLAY

Choose video display option A or B:



NOTE: Your NVR model may differ from that shown in this illustration.



OPTION A HDMI

- Plug the included HDMI cable into the NVR's HDMI port.
- Connect the other end of the HDMI cable to the monitor or TV.
- Plug the monitor or TV into a surge protector.

i NOTE: This is the highest quality viewing option



OPTION B VGA MONITOR

- Plug a VGA cable (not included) into the NVR's VGA port.
- Connect the other end of the VGA cable to the monitor.
- Plug the monitor into a surge protector.

i NOTE: The monitor must be 19" or larger



STEP 3 CONNECT TO ROUTER

- Plug the included Network (Ethernet) cable into the Network port **3** on the back of the NVR.
- Connect the other end of the cable to an open port on your router (not included).

RJ45 Ethernet Cable



Before starting the NVR, download the free QC View App (for mobile phones) or QC View HD App (for tablets) from your device's app store.

STEP 4 CONNECT MOUSE

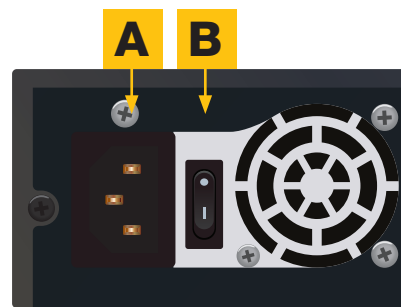
Plug the mouse into the USB port **4** on the back of the NVR.

NOTE: The USB port on the front of the NVR is used for backing up video files.



STEP 5 TURN ON NVR

- Plug the NVR power adapter into the power port on the back of the NVR.
 - Plug the power cable into a surge protector.
 - Turn on the NVR's power switch.
- The NVR will beep as it powers up.



The Start Up Wizard will appear on-screen after a few minutes.

STEP 6 START UP WIZARD

When the startup wizard appears, follow the on-screen instructions to complete the NVR setup and connect to the internet using Q-See's Scan N' View service.

WIZARD GLOSSARY

DST (Daylight Savings Time): Set DST to change where applicable. Click Set to enter the start and end dates. Make sure the box is checked.

NTP (Network Time Protocol): Maintains the accuracy of the DVR's clock. Check the box to turn on.

Language: This is the language the NVR will use.

NOTE: If a new language is selected, the NVR will restart. The wizard will continue in English but menus will be in the selected language.

Local IP Address (LAN): The NVR's address on the network. Write the address on the line below. To access the NVR from a computer on the same network, enter this address into the web browser.

To complete setup, launch QT View App on your mobile device.

Local Address (LAN): _____

To prevent the wizard from running again, uncheck the startup option.

Q-SEE QT VIEW ON YOUR COMPUTER

To access your DVR over the Internet on a computer (Mac or PC) go to www.QTView.com

- Enter your NVR's serial number (from the QR code screen or on the label on the NVR's case).
- Enter the User Name and Password you created in the Startup Wizard
- Select language
- Click on Login to begin viewing your cameras.

Serial No:

User Name:

Password:

Language:

STEP 7 QT VIEW MOBILE APP

To view cameras, you need to add your DVR to the app.

- Tap on the QR Code Scan icon
- When the QR code has been scanned, the app will return to the Login Screen.
- The DVR's ID will appear in the SN section. Enter the Account (User Name) and Password that you created in the Startup Wizard.
- Tap Login to begin viewing your cameras.

QT VIEW GLOSSARY

SN: This is the DVR's serial number. It appears on the label with the QR code, in the QR code window and in the Startup Wizard.

Account: Your User Name ("admin" is the default user name)

Password: Password selected during DVR setup ("123456" is the default password)

When you can view live video from the cameras, they are tested and ready to be installed.

STEP 8 REGISTER YOUR PRODUCT

Register NOW at www.Q-See.com/Register to be eligible for live Q-See support and product news.

Q-See never shares or sells registration information!

CAMERA TROUBLESHOOTING

If you do not see video from a camera:

- Check to ensure that the camera is connected to a Video-In port.
- Connect the camera to a different video-in port to determine if the problem is with a camera or a cable. Switch one element (camera, or cable) at a time to isolate the problem.
- If the camera is connected through a router or POE, try a different port.

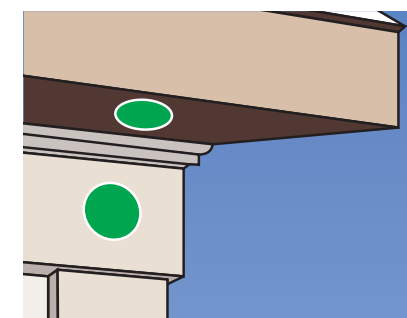
HELP AND ADVANCED SETTINGS

- Most problems can be solved online via our 24/7 knowledge base at www.Q-See.com/Support
- Live chat is available M-F 6am to 7pm and from 9am to 5pm on weekends. All times are PST.

TIPS FOR INSTALLING CAMERAS

When installing the cameras, the optimal placement depends on each unique situation. The green areas shown in the illustration to the right are usually the best locations to mount cameras, but also consider the following:

- Field of view
- Accessibility to potential vandalism
- Exposure to undesirable weather
- Length of camera cable
- Proximity to high voltage wires or other sources of potential electrical interference
- Do not place camera behind a window or other obstruction



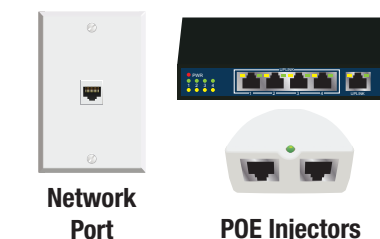
Your feedback helps us build better products!
Rate your product at <http://q-see.com>
Be entered to WIN a \$100 gift card!

REMOTE CAMERAS

IP Cameras can connect to an NVR with a network or Internet connection.

You will need:

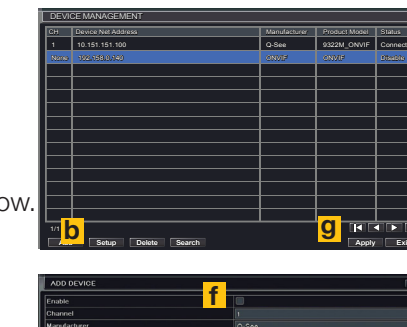
- A network port that is connected to a router.
- A POE Injector, such as Q-See's QAPE401.
- A CAT5 network cable (to connect injector and network port).



LOCAL NETWORK

If your camera and NVR will be in the same building, they can use the same local network to communicate with each other.

- Plug the POE Injector into a power outlet. It is recommended that you use a UL-1449 rated surge protector to protect your equipment.
- Using a CAT5 network cable, connect the data port on the POE Injector to a network port that is connected to an active network (connected to a router).
- Use the included power/video cable to connect a camera to one of the POE ports.
- On your NVR:
 - Select **IP Camera** from the **Main Menu**.
 - Click on **Search** at the bottom of the **Device Manager** window.
 - Select one or more cameras from the list by checking the box to its left.
 - Click **OK** to return to the **Device Manager** window.
 - Select a camera and click **Setup**.
 - Check the **Enable** box and click **OK**.Repeat e-f for other cameras, if needed
- Click **Apply** to save before exiting window.



OVER THE INTERNET

Your NVR can record video from an IP camera with an Internet connection.

- Follow steps 1-3, above before proceeding with the instructions, below:
- Download and install either **IP Tool** (PC) or **Smart PSS** (Mac and PC) along with the IP Camera manual from www.Q-See.com/Support.
 - Obtain the camera's IP address following the instructions in the manual.
 - On your NVR:
 - Select **IP Camera** from the **Main Menu**.
 - Click on **Search** at the bottom of the **Device Manager** window.
 - Enter the camera's IP address, Server Port (**85**), User Name (**admin**) and password (**123456**). You can change these using the software you downloaded.
 - Check the **Enable** box and click **OK**.
 - Click **Apply** to save before exiting window.