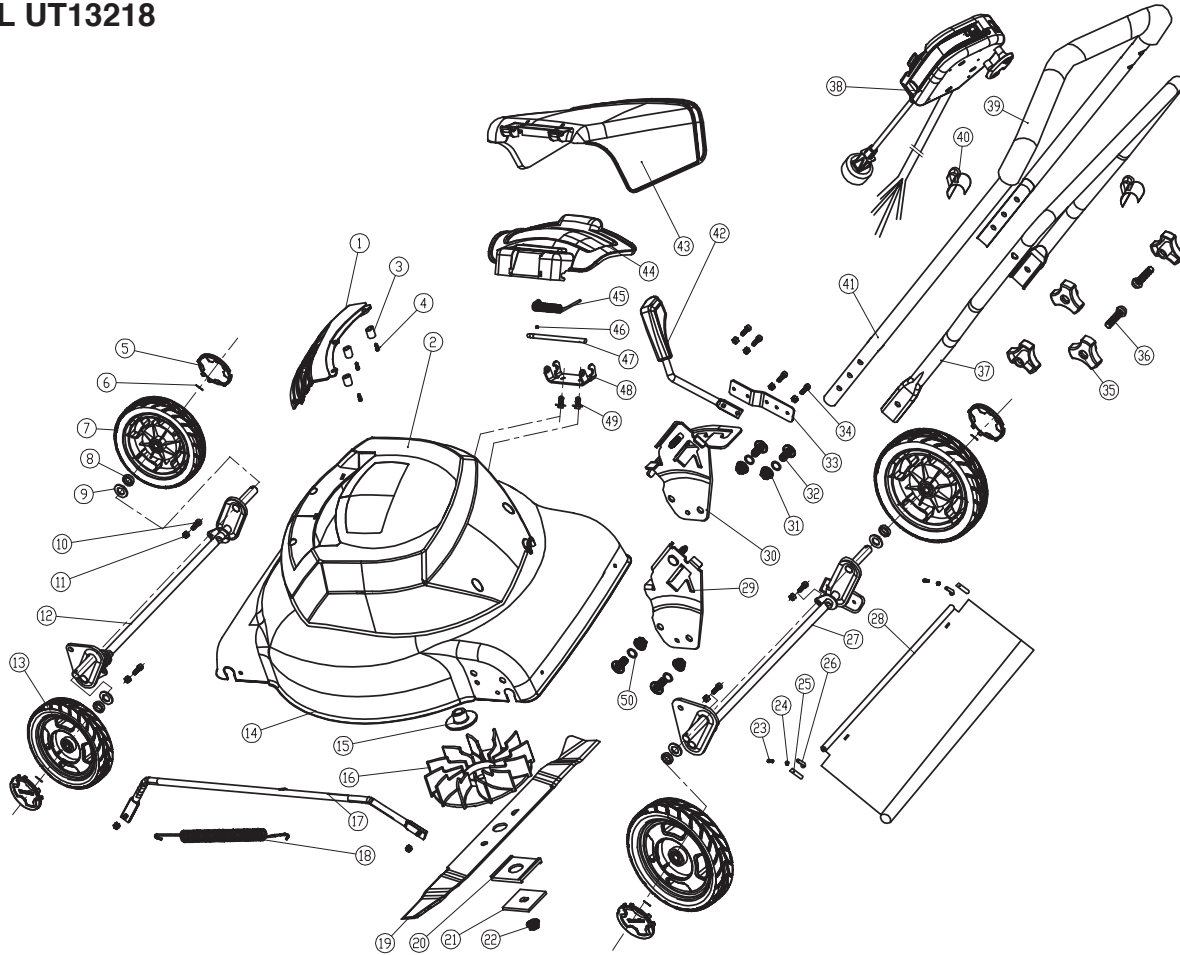


EXPLODED VIEW/PARTS LIST

MODEL UT13218



Key No.	Part No.	Description	Qty.	Key No.	Part No.	Description	Qty.
1	8403-516201	motor vent	1	26	8186-517002	clip	2
2	8020-517006	motor cover	1	27	8440-517002	18 in rear axle	1
3	8025-516201	bolt sleeve	1	28	8181-517008SB	rear flap	1
4	8SJAB40-14B	self-tapping screw	3	29	8440-517003	height adjustment bracket left	1
5	8020-516207	7 in wheel cover	4	30	8440-517004	height adjustment bracket right	1
6	8PA25-20D	cotter pin	4	31	8ND-10D	flange nut	4
7	8121-516001	7 in right wheel	2	32	8SBCD10-20D	bolt M10x20	4
8	8224-516201	wheel ferrule	4	33	8321-517009	spring board	1
9	8202-516202	washer	4	34	8SACD05-14B	screw	4
10	8SACD05-12B	pan head screw	4	35	8313-513701	knob	4
11	8NG-05B	self locking nut	12	36	8206-517001	bolt	2
12	8440-517001	18 in front axle	1	37	8001-517002	lower handle	1
13	8121-516002	7 in left wheel	2	38	8000-516002	switch and power cable assy	1
14	8006-517001	deck	1	39	8331-516201	soft grip (not sold separately)	1
15	8224-516202	spindle guard	1	40	8007-517001	cord guide	2
16	8403-517001	fan	1	41	8001-517001	upper handle with soft grip	1
17	8087-517002	link bar	1	42	8087-516001	height adjustment handle	1
18	8342-517002	extension spring	1	43	8020-517003	side discharge deflector	1
19	8231-517001	blade	1	44	8020-517002	side discharge door	1
20	8181-517002	blade insulator	1	45	8342-516202	compression spring	1
21	8321-517006	spacer	1	46	8CE-05B	E-ring	1
22	8207-517001	blade nut	1	47	8081-516204	side discharge pin	1
23	8SJAD04-12B	cross screw	2	48	8321-517008	side discharge bracket	1
24	8NG-04B	lock nut	2	49	8SQDD06-08D	flange bolt	2
25	8187-516201	rubber board backup plate	2	50	R8WS-10B	spring pad	4