



Illustrated Parts List

Portable Generator



This generator is rated in accordance with CSA (Canadian Standards Association) standard C22.2 No. 100-94 (motor and generators).

Questions? Help is just a moment away!
Preguntas? La ayuda es justa un momento lejos!

Call: Portable Generator Helpline

Llame: Línea Directa del Generador portátil - 1-888-611-6708 M-F 8-5 CST

Troy-Bilt® is a registered trademark of MTD Products Inc and is used under license to Briggs & Stratton Power Products, LLC.
Troy-Bilt® es una marca de MTD y se usa abajo licencia a Briggs & Stratton Power Products, LLC.

Model / Modelo

Mfg. No.	Description / Descripción
030478A-00	7,000 Watt Troy-Bilt

Manual Part No. 1759643

Revision -

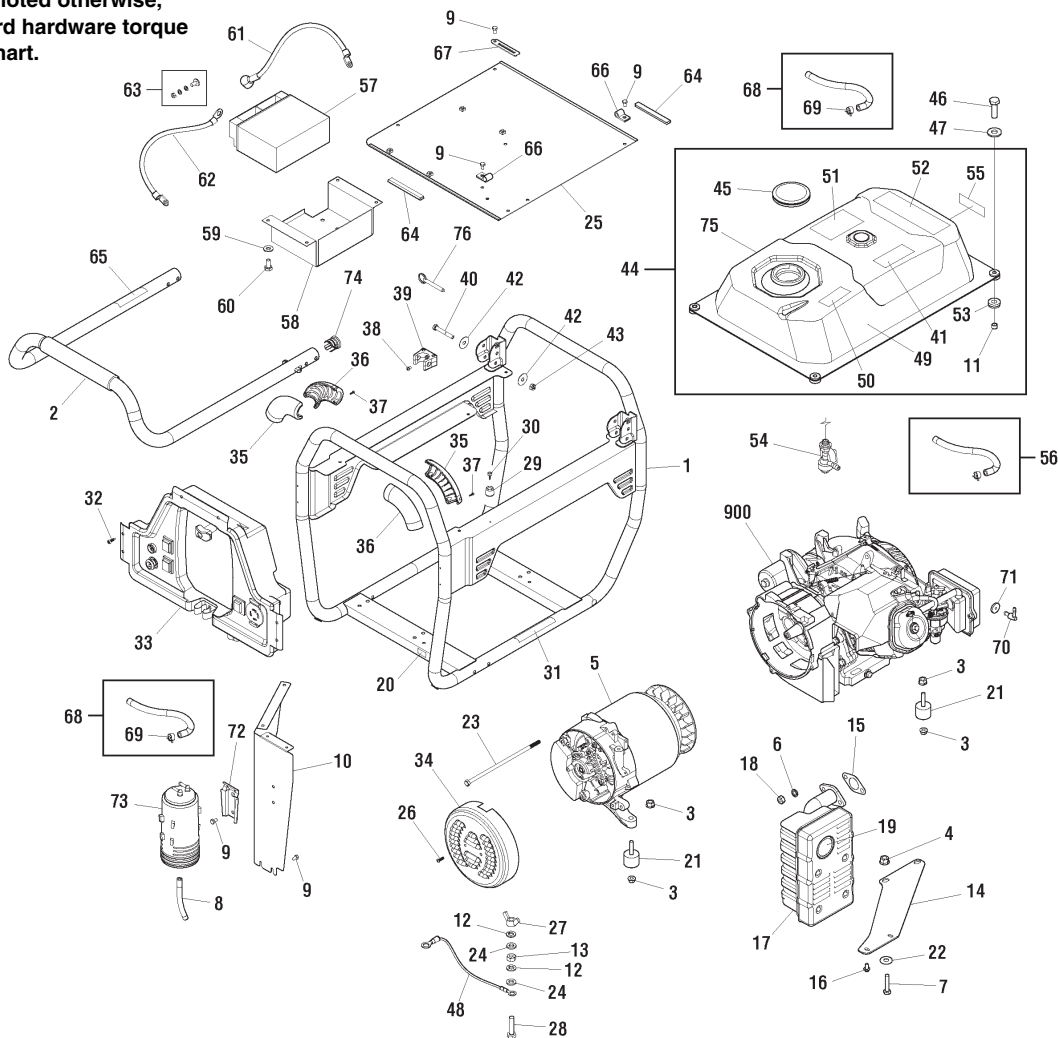
Rev. Date: 3/31/2015

PRODUCT COMPONENTS	PAGES
Main Unit	4
Alternator	7
Control Panel	8
Wheel Kit	9
Torque Specification Chart	Inside Back Cover

Main Unit

80013102

NOTE: Unless noted otherwise, use the standard hardware torque specification chart.



REF. PART NO.	DESCRIPTION	REF. PART NO.	DESCRIPTION		
1	311202GS	CRADLE	18	-----	* NUT, M8 - 1.25
2	313763GS	HANDLE	19	83083GS	SCREEN
3	67989GS	NUT	20	704331	DECAL
4	52859GS	NUT	21	85651GS	MOUNT-VIBRATION
5	-----	ALTERNATOR	22	189295GS	WASHER
6	-----	* WASHER, Lock, 3/8	23	312915GS	BOLT
7	-----	* CAPSCREW, Hex Head, M10-1.5 x 45	24	-----	* WASHER, M6
8	195201DGS	HOSE-FUEL	25	312731GS	HEATSHIELD
9	-----	* CAPSCREW, Hex Head, M6-1.0 x 10	26	312909GS	SCREW
10	318886GS	HEATSHIELD	27	87680GS	NUT
11	189137GS	SPACER	28	-----	* CAPSCREW, Hex Head, M6-1.0 x 25
12	-----	* WASHER, Lock, 1/4	29	313086GS	BUMPER
13	-----	* NUT, M6-1.0	30	313077GS	SCREW
14	312941GS	BRACKET	31	319066GS	DECAL
15	794818	GASKET-EXHAUST	32	313075GS	SCREW
16	-----	* CAPSCREW, Hex Head, M6-1.0 x 12	33	707489	PANEL-CONTROL
17	192569GS	MUFFLER			

Footnotes

* Items without part numbers are common fasteners and are available at your local hardware store.

** Contact Engine Manufacturer

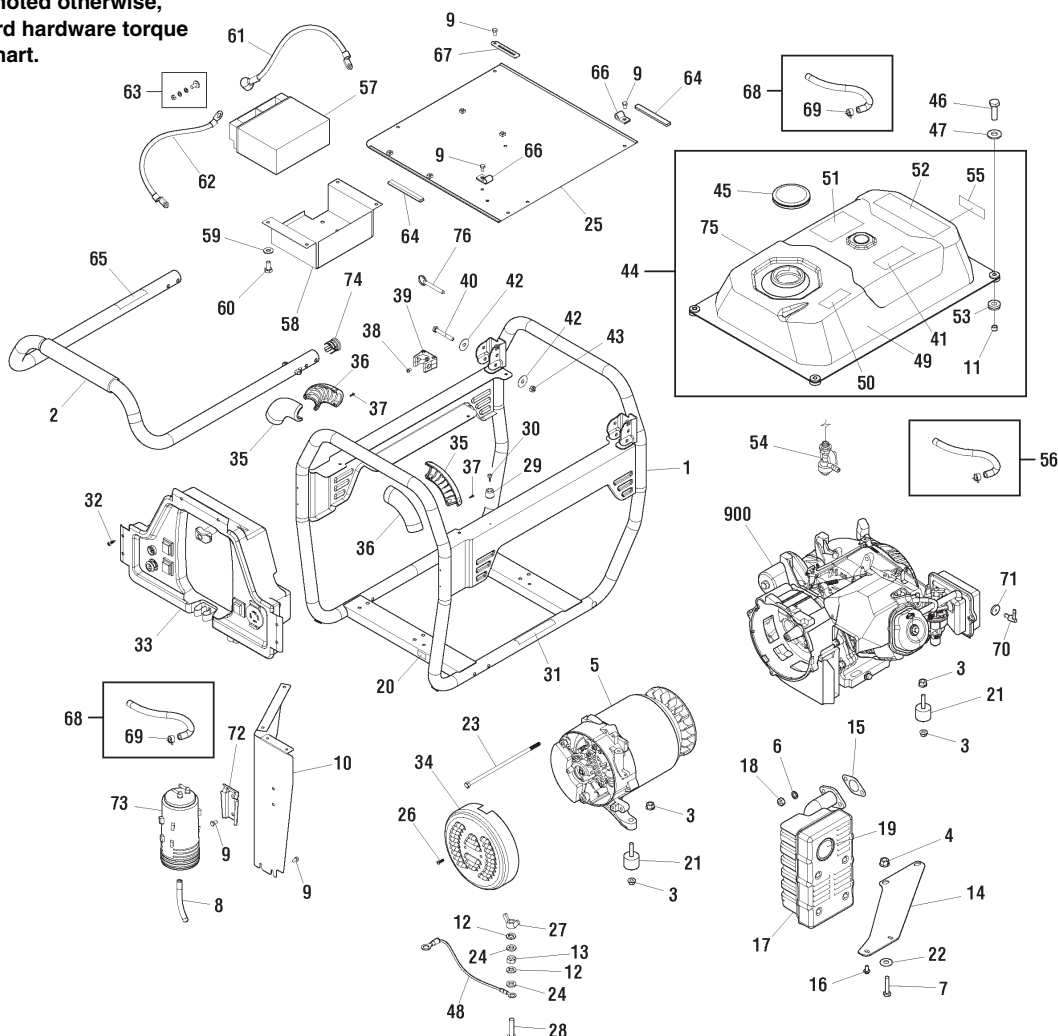
The above parts group applies to the following Mfg. Nos.:

030478A-00 - 7,000 Watt Troy-Bilt

Main Unit

80013102

NOTE: Unless noted otherwise, use the standard hardware torque specification chart.



REF. PART NO.	DESCRIPTION	REF. PART NO.	DESCRIPTION		
34	312870GS	COVER-REAR BEARING	51	202997GS	DECAL
35	311213GS	GRIP	52	319064GS	DECAL
36	311214GS	GRIP	53	189134GS	GROMMET
37	313076GS	SCREW	54	310574GS	VALVE-FUEL
38	197486GS	SCREW	55	705767	DECAL
39	312402GS	BRACKET	56	791745	KIT-FUEL HOSE (Cut to fit)
40	312943GS	BOLT	57	316345GS	BATTERY
41	705545	DECAL	58	195680GS	TRAY-BATTERY
42	187104GS	WASHER	59	70005GS	WASHER
43	312945GS	NUT	60	43116GS	BOLT
44	706324	TANK-FUEL	61	313479GS	WIRE
45	319385GS	CAP-FUEL	62	313480GS	WIRE
46	706323	BOLT	63	315546GS	KIT-BATTERY HARDWARE
47	----	* WASHER, Flat, 1/4	64	315041GS	EDGING
48	313481GS	WIRE	65	313159GS	DECAL
49	706325	DECAL	66	315042GS	CLAMP
50	319065GS	DECAL	67	315018GS	WIREFORM

Footnotes

* Items without part numbers are common fasteners and are available at your local hardware store.

** Contact Engine Manufacturer

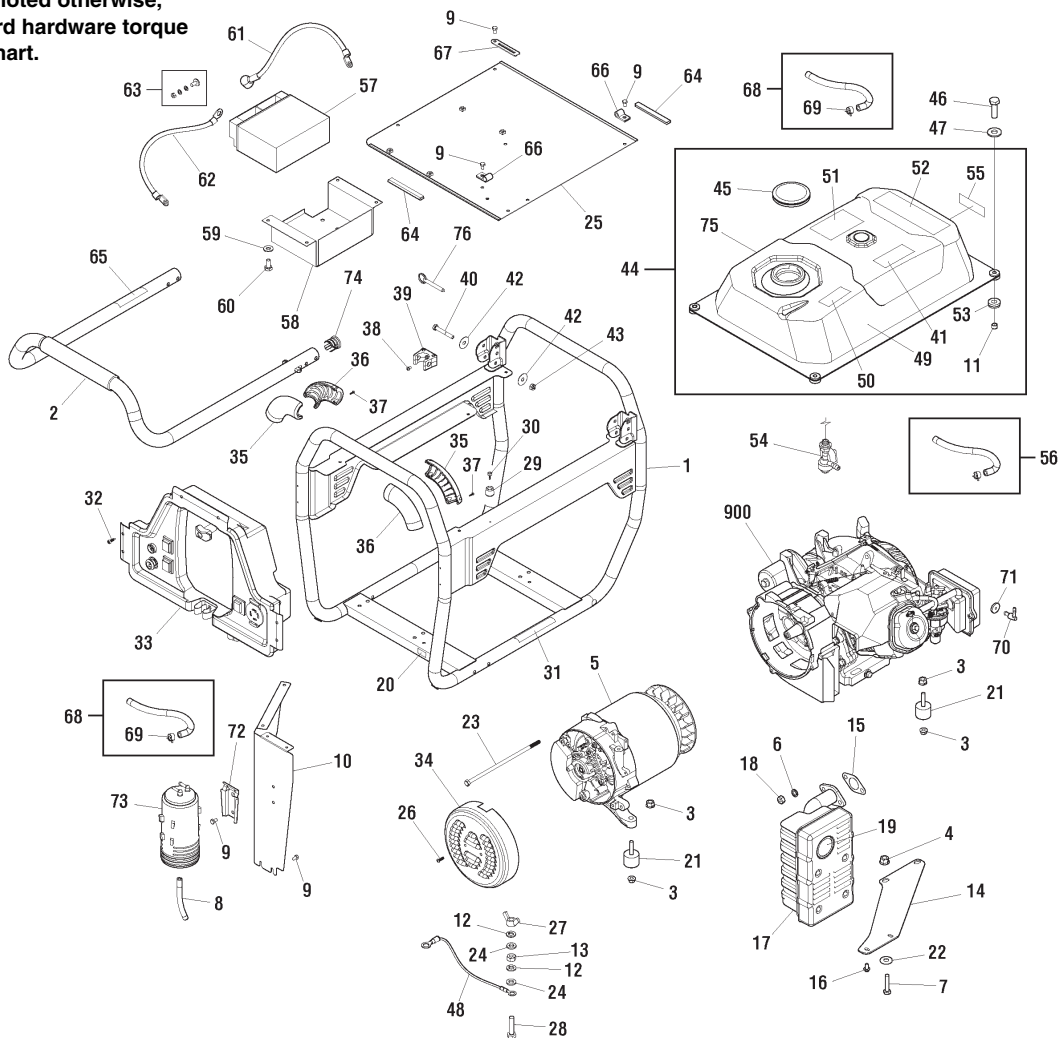
The above parts group applies to the following Mfg. Nos.:

030478A-00 - 7,000 Watt Troy-Bilt

Main Unit

80013102

NOTE: Unless noted otherwise, use the standard hardware torque specification chart.



REF.	PART NO.	DESCRIPTION	REF.	PART NO.	DESCRIPTION
68	315017GS	HOSE-VAPOR (Cut to fit)			
69	316173GS	CLAMP			
70	283603GS	ELBOW			
71	283475GS	BUSHING			
72	318884GS	BRACKET			
73	318889GS	CARB CANISTER			
74	313594GS	PLUG			
75	705943	DECAL			
76	B4135GS	PIN			
900	----	** ENGINE			
--	316711GS	FUSE			
--	B4177GS	CHARGER-BATTERY			

Footnotes

* Items without part numbers are common fasteners and are available at your local hardware store.

** Contact Engine Manufacturer

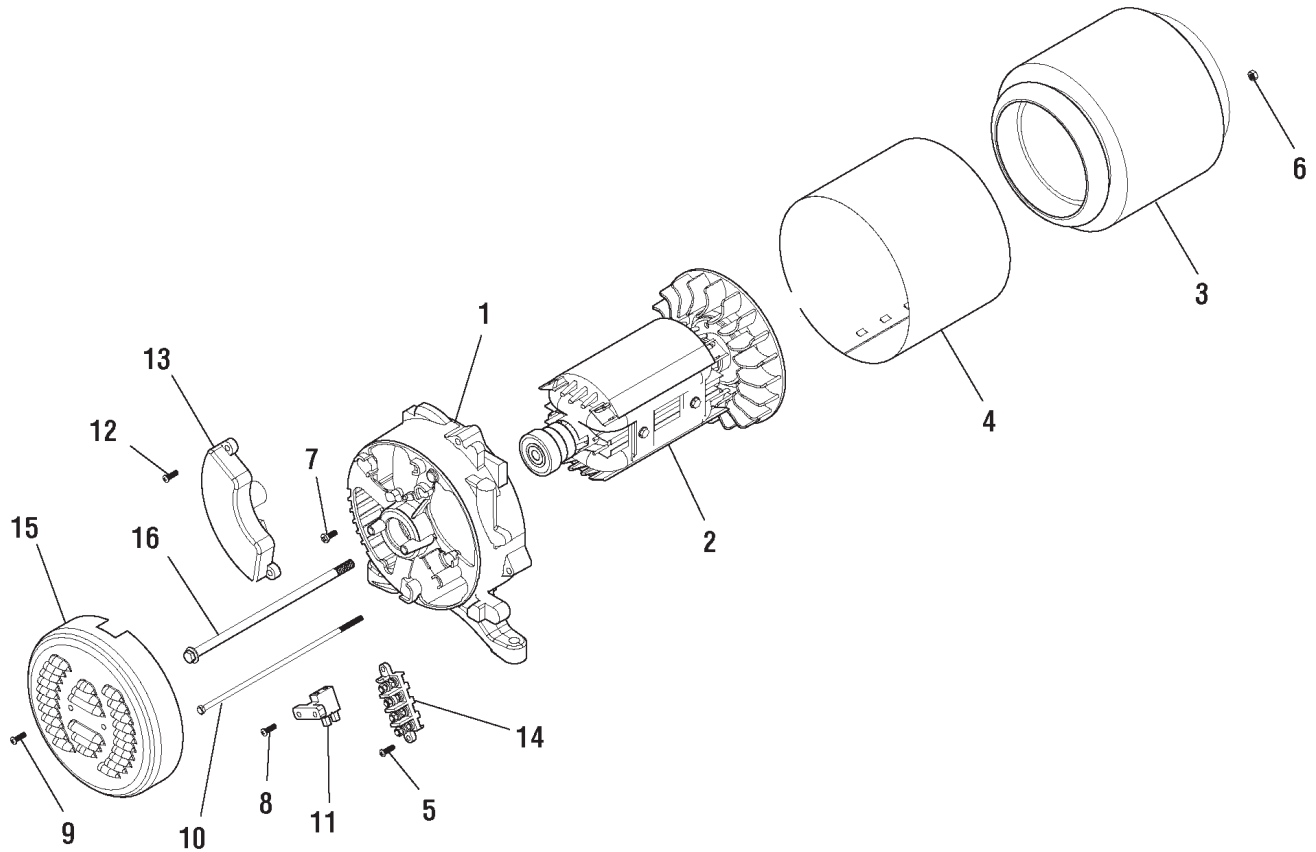
The above parts group applies to the following Mfg. Nos.:

030478A-00 - 7,000 Watt Troy-Bilt

Alternator

80013100

NOTE: Unless noted otherwise, use the standard hardware torque specification chart.



REF. PART NO.	DESCRIPTION	REF. PART NO.	DESCRIPTION
1	312866GS	SUPPORT-BEARING	
2	707493	ROTOR	
3	707494	STATOR	
4	312918GS	BAND-STATOR	
5	312922GS	SCREW	
6	312916GS	NUT	
7	312911GS	SCREW	
8	312908GS	SCREW	
9	312909GS	SCREW	
10	312919GS	BOLT	
11	312904GS	BRUSH	
12	312907GS	SCREW	
13	312871GS	AVR	
14	312921GS	BLOCK-JUNCTION	
15	312870GS	COVER	
16	312912GS	SCREW	

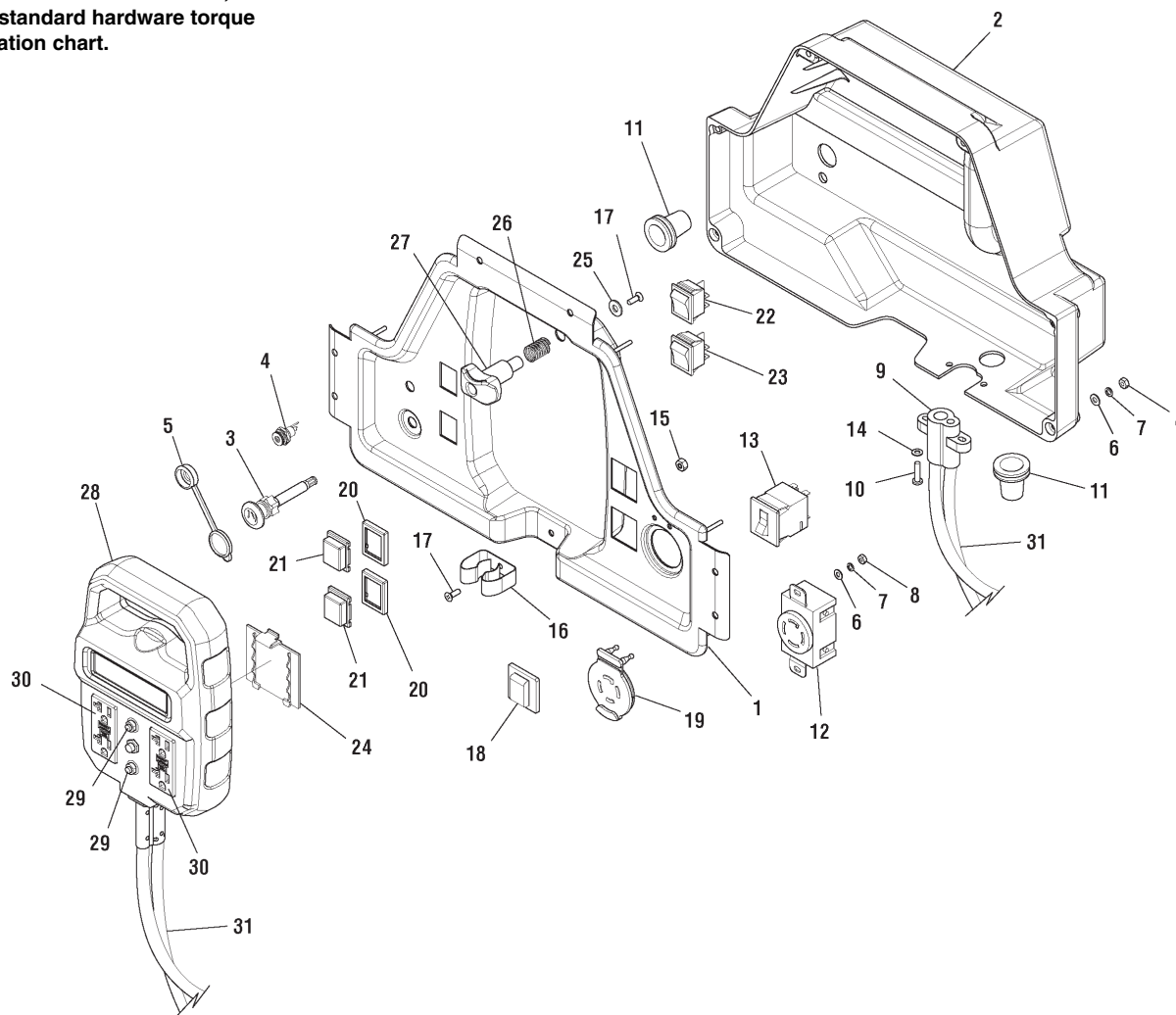
Footnotes

The above parts group applies to the following Mfg. Nos.:
030478A-00 - 7,000 Watt Troy-Bilt

Control Panel

80013101

NOTE: Unless noted otherwise, use the standard hardware torque specification chart.



REF. PART NO.	DESCRIPTION	REF. PART NO.	DESCRIPTION		
1	707491	PANEL-CONTROL	18	191481GS	BOOT
2	311172GS	BOX-CONTROL PANEL	19	311499GS	COVER-OUTLET
3	312682GS	CABLE-CHOKE	20	312686GS	PLATE
4	186168GS	JACK-COAXIAL, DC	21	312685GS	BOOT
5	312687GS	BOOT	22	312684GS	SWITCH
6	-----	* WASHER, M4	23	312683GS	SWITCH
7	-----	* WASHER, Lock, #8	24	312620GS	COVER-BACK
8	-----	* NUT, Hex, M4-0.7	25	-----	* WASHER, M6-1/4
9	312691GS	STRAIN-RELIEF	26	312584GS	SPRING
10	75477GS	SCREW	27	311512GS	KNOB
11	312741GS	GROMMET	28	707492	EXTEND-A-PANEL
12	312689GS	OUTLET-120/240V 30A	29	209872GS	BREAKER-CIRCUIT 20A
13	202033GS	BREAKER-CIRCUIT 30A	30	80409GS	OUTLET
14	51713GS	WASHER	31	707490	CORDSET
15	-----	* NUT, Hex, M6-1.0			
16	311511GS	CLIP			
17	314473GS	SCREW			

Footnotes

* Items without part numbers are common fasteners and are available at your local hardware store.

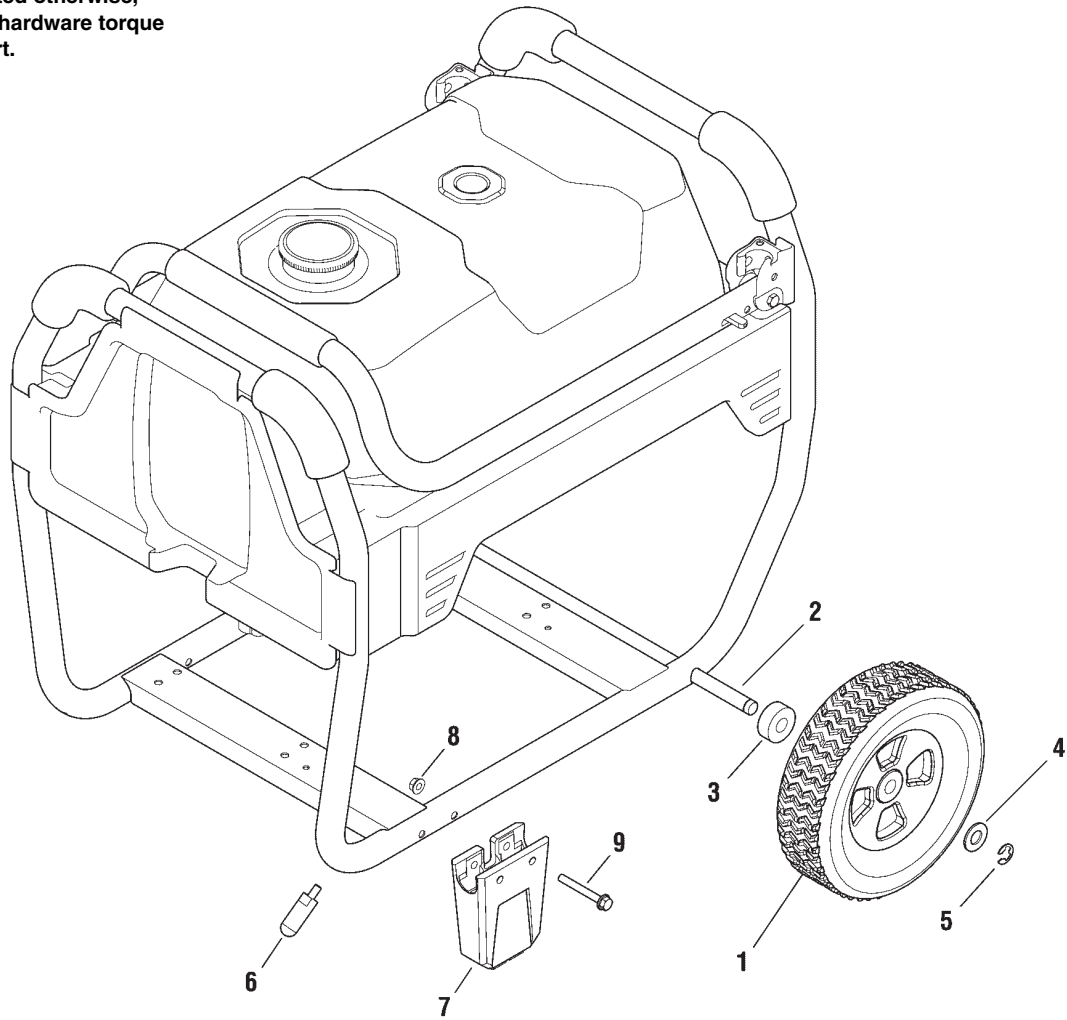
The above parts group applies to the following Mfg. Nos.:

030478A-00 - 7,000 Watt Troy-Bilt

Wheel Kit

80006590

NOTE: Unless noted otherwise, use the standard hardware torque specification chart.



REF. PART NO.	DESCRIPTION	REF. PART NO.	DESCRIPTION
1	319465GS	WHEEL	
2	317610GS	AXLE	
3	319464GS	WASHER	
4	----	* WASHER, 5/8	
5	191265GS	E-RING	
6	311558GS	POST	
7	312510GS	SUPPORT-LEG	
8	67989GS	NUT	
9	706274	BOLT	
--	706278	KIT-HARDWARE (Not Illustrated)	

Footnotes

* Items without part numbers are common fasteners, available at local hardware stores.

The above parts group applies to the following Mfg. Nos.:

030478A-00 - 7,000 Watt Troy-Bilt

Hardware Identification & Torque Specifications

Torque Specification Chart								
FOR STANDARD METRIC MACHINE HARDWARE (Tolerance ± 20%)								
Property Class	5.6		8.8		10.9		12.9	
	Class 5.6		Class 8.8		Class 10.9		Class 12.9	
Size Of Hardware	in/lbs		in/lbs		in/lbs		in/lbs	
	ft/lbs	Nm.	ft/lbs	Nm.	ft/lbs	Nm.	ft/lbs	Nm.
M3	5.88	.56	13.44	1.28	19.2	1.80	22.92	2.15
M4	13.44	1.28	30.72	2.90	43.44	4.10	52.56	4.95
M5	26.4	2.50	60.96	5.75	5.97	8.10	7.15	9.7
M6	44.64	4.3	7.3	9.9	10.3	14	12.1	16.5
M7	5.2	7.1	12.1	16.5	16.9	23	19.9	27
M8	7.7	10.5	17.7	24	25	34	29	40
M10	15	21	35	48	50	67	59	81
M12	26	36	61	83	86.2	117	103	140
M14	42	58	101	132	136	185	162	220
M16	64	88	147	200	210	285	250	340
M18	89	121	202	275	287	390	346	470
M20	126	171	290	390	405	550	486	660
M22	169	230	390	530	559	745	656	890
M24	217	295	497	375	708	960	840	1140
M27	320	435	733	995	1032	1400	1239	1680
M30	435	590	995	1350	1401	1900	1681	2280
M33	590	800	1349	1830	1902	2580	2278	3090
M36	759	1030	1740	2360	2441	3310	2935	3980
M39	988	1340	2249	3050	3163	4290	3798	5150

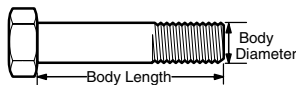
The guides and ruler furnished below are designed to help you select the appropriate hardware.



Nut, M8

Thread Diameter (mm)
Inside Diameter (in)
Threads per inch

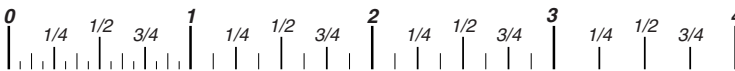
Nut, 1/2-16



Screw, M8- 1.25 x 25

Thread Diameter (mm)
Body Diameter
Distance between threads (mm)
Threads per inch
Body Length (mm)
Body Length (in)

Screw, 1/2- 16 x 2



Standard Hardware Sizing

When a washer or nut is identified as 1/2" (M8), this is the *Nominal size*, meaning the *inside diameter* is 1/2 inch (8mm metric thread diameter); if a second number is present it represents the *threads per inch* (distance between threads).

When bolt or capscrew is identified as 1/2 - 16 x 2" (M8 - 1.25 x 50), this means the *Nominal size*, or body diameter is 1/2 inch (8mm metric thread diameter), the second number, 16, represents the *threads per inch*, (1.25 thread diameter). The final number is the body length of the bolt or screw, 2 inches (50mm).

Torque Specification Chart						
FOR STANDARD MACHINE HARDWARE (Tolerance ± 20%)						
Hardware Grade	No Marks		SAE Grade 5		SAE Grade 8	
	SAE Grade 2		SAE Grade 5		SAE Grade 8	
Size Of Hardware	in/lbs		in/lbs		in/lbs	
	ft/lbs	Nm.	ft/lbs	Nm.	ft/lbs	Nm.
8-32	19	2.1	30	3.4	41	4.6
8-36	20	2.3	31	3.5	43	4.9
10-24	27	3.1	43	4.9	60	6.8
10-32	31	3.5	49	5.5	68	7.7
1/4-20	66	7.6	8	10.9	12	16.3
1/4-28	76	8.6	10	13.6	14	19.0
5/16-18	11	15.0	17	23.1	25	34.0
5/16-24	12	16.3	19	25.8	29	34.0
3/8-16	20	27.2	30	40.8	45	61.2
3/8-24	23	31.3	35	47.6	50	68.0
7/16-14	30	40.8	50	68.0	70	95.2
7/16-20	35	47.6	55	74.8	80	108.8
1/2-13	50	68.0	75	102.0	110	149.6
1/2-20	55	74.8	90	122.4	120	163.2
9/16-12	65	88.4	110	149.6	150	204.0
9/16-18	75	102.0	120	163.2	170	231.2
5/8-11	90	122.4	150	204.0	220	299.2
5/8-18	100	136	180	244.8	240	326.4
3/4-10	160	217.6	260	353.6	386	525.0
3/4-16	180	244.8	300	408.0	420	571.2
7/8-9	140	190.4	400	544.0	600	816.0
7/8-14	155	210.8	440	598.4	660	897.6
1-8	220	299.2	580	788.8	900	1,244.0
1-12	240	326.4	640	870.4	1,000	1,360.0

NOTES

- These torque values are to be used for all hardware excluding: locknuts, self-tapping screws, thread forming screws, sheet metal screws and socket head setscrews.
- Recommended seating torque values for locknuts:
 - for prevailing torque locknuts - use 65% of grade 5 torques.
 - for flange whizlock nuts and screws - use 135% of grade 5 torques.
- Unless otherwise noted on assembly drawings, all torque values must meet this specification.

Common Hardware Types

Hex Head Capscrew



Washer



Lockwasher

Carriage Bolt



Hex Nut

Wrench & Fastener Size Guide

1/4" Bolt or Nut Wrench—7/16"	5/16" Bolt or Nut Wrench—1/2"	3/8" Bolt or Nut Wrench—9/16"	7/16" Bolt or Nut Wrench (Bolt)—5/8" Wrench (Nut)—11/16"	1/2" Bolt or Nut Wrench—3/4"
M6 Bolt or Nut Wrench—10mm	M8 Bolt or Nut Wrench—13mm	M10 Bolt or Nut Wrench—17mm	M12 Bolt or Nut Wrench—19mm	M14 Bolt or Nut Wrench—22mm



Briggs & Stratton Power Products Group, LLC

Copyright© 2015 Briggs & Stratton Power Products Group, LLC. All rights reserved. No part of this page can be reproduced or transmitted in any form by any means without the express written permission of Briggs & Stratton Power Products Group, LLC.