



UMBRELLA BASE



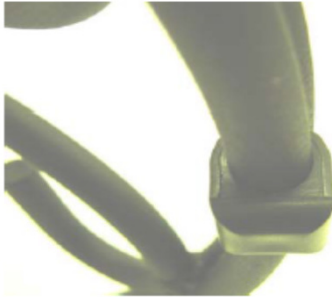
Questions, problems, missing parts? Before returning to your retailer, call our customer service department at 1-855-HD-HAMPTON, 8 a.m.-6 p.m., EST, Monday-Friday. Please indicate the store and date your purchase was made.

ASSEMBLY INSTRUCTIONS

Umbrella Base Instructions

Parts List

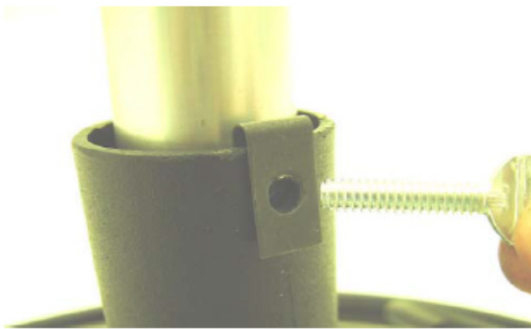
- 1 – Clip Nut
- 1 – Thumb Screw
- 3 – Foot Glides



Step 1: Snap the 3 Foot Glides onto the bottom ring of the umbrella base. Space them out equally.



Step 2: Install Clip Nut on the top edge of the Umbrella Base tube. Align the Clip Nut hole with the tube hole so the Thumb Screw can be inserted. Tap down into position with a hammer.



Step 3: Put the Umbrella Base under the center of your table. Run the umbrella pole through the table and into the base. Install the Thumb Screw through the Clip Nut and base hole and tighten against the umbrella pole.

Your umbrella pole is now secure. Installation Complete.

CARE AND MAINTENANCE INSTRUCTIONS

The frames should be washed with a mild soap and thoroughly rinsed. It is recommended that at least twice a year, you wax your frames with an automotive-type, clear spray-on wax. Please follow the directions on the back of the bottle provided by the manufacturer. Do not use harsh chemicals to clean your product and do not use paste wax.

It is strongly recommended that before waxing the frames, the frames should be inspected for chips in the finish, which may occur under normal usage. Any chips or scratches can be easily repaired by following the instructions on the back of a can of touch-up paint. Simple maintenance will ensure a lifetime of problem-free usage.

Also note that furniture located around salt water, including salt water pools, needs additional cleaning to remove materials that are inherently destructive to outdoor finishes. We recommend cleaning your furniture on a weekly basis and applying wax once a month during heavily used periods of the year.

WARRANTY

One year limited frame warranty