

EASY ASSEMBLY AND OPERATION INSTRUCTIONS

5124608 Wicked Cauldron Witches

USA/ États-Unis 1004189195  
YOW 1004126178



Please follow the step by step guide and enjoy your Wicked Cauldron Witches!

CARE AND STORAGE INSTRUCTIONS

For best performance operate your item indoors. When not in use, store this product in it's original packing. Keep away from heat and moisture.

TROUBLE SHOOTING:

- Ensure that the item's adapter is plugged in at the Function Control Box and in the wall.
- Ensure that the switch on the function control box is on the desired setting.
- If not functioning properly, ensure that cables are connected to their corresponding cable as shown in the instruction sheet.
- Be sure nothing is blocking movement or caught in moving parts.
- Ensure that the floor or surface that the item sits on is flat and level.
- Be sure nothing is blocking the sensor.

WARNING

This item is not a toy and should be used for decoration only. This item contains small parts that can be a choking hazard. Keep all plastic and wire parts away from children.

1. Please use the transformer supplied by manufacturer.
2. Please assemble item according to instructions. Connect all wires according to matching color.
3. Children should be supervised by adults. Item should not be grabbed, as it becomes a tipping hazard. Keep all away from the transformer, as it heats up during operation.

Please view all instructions carefully before assembling. Save this instruction sheet for future reference.

PARTS LIST

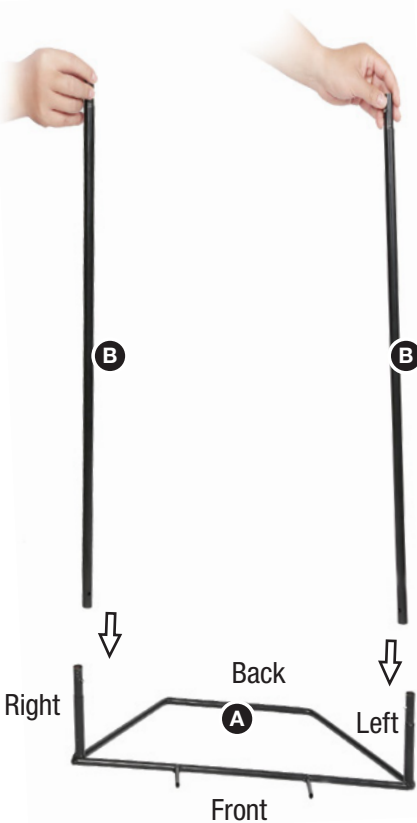
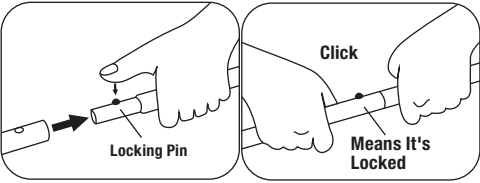
- A. Base x1
- B. Support Poles X 2
- C. Function Control Box Frame x1
- D. Right Shoulder Form x1
- E. Middle Shoulder Form x1
- F. Left Shoulder Form x1
- G. Right Head x1
- H. Middle Head x1
- I. Left Head x1
- J. Glowing Embers Base x1
- K. Glowing Embers Form x1
- L. Cauldron Support Poles X 2
- M. Cauldron Forms with Hole X 2
- N. Cauldron Support Hoop x1
- O. Cauldron Form x1
- P. Cauldron Form with IR Sensor x1
- Q. Cauldron Gauze x1
- R. Costume x1
- (Remove fabric from hook Loop closures before assembling)
- S. Right Arm with Spoon x1
- T. Left Arm with Rat x1
- U. Left Hat x1
- V. Middle Hat x1
- W. Right Hat x1
- X. Adapter x1

\* Adapter Spec  
Input: 100 - 240VAC 50/60Hz  
Output: 5.9V 1.5A

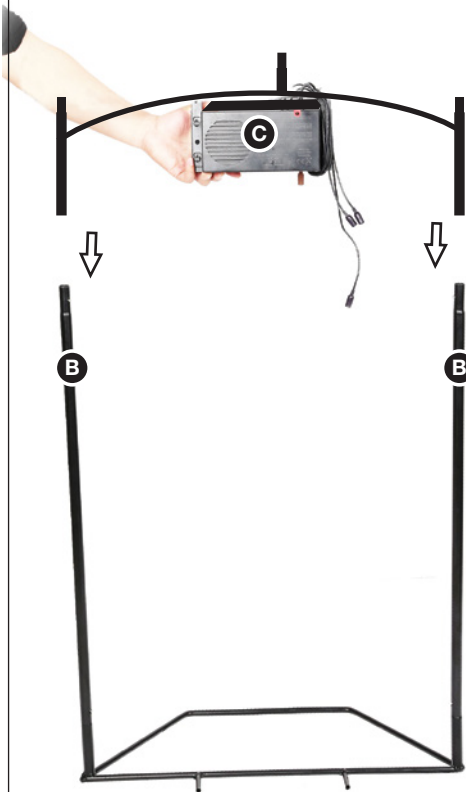


BEFORE ASSEMBLING, REMOVE ALL THE ABOVE PARTS FROM BOX. IF ANY PART IS MISSING, DO NOT ATTEMPT TO ASSEMBLE THE PRODUCT AND CONTACT CUSTOMER SERVICE FROM 8:30AM TO 5:30PM PST AT 1-877-527-0313.

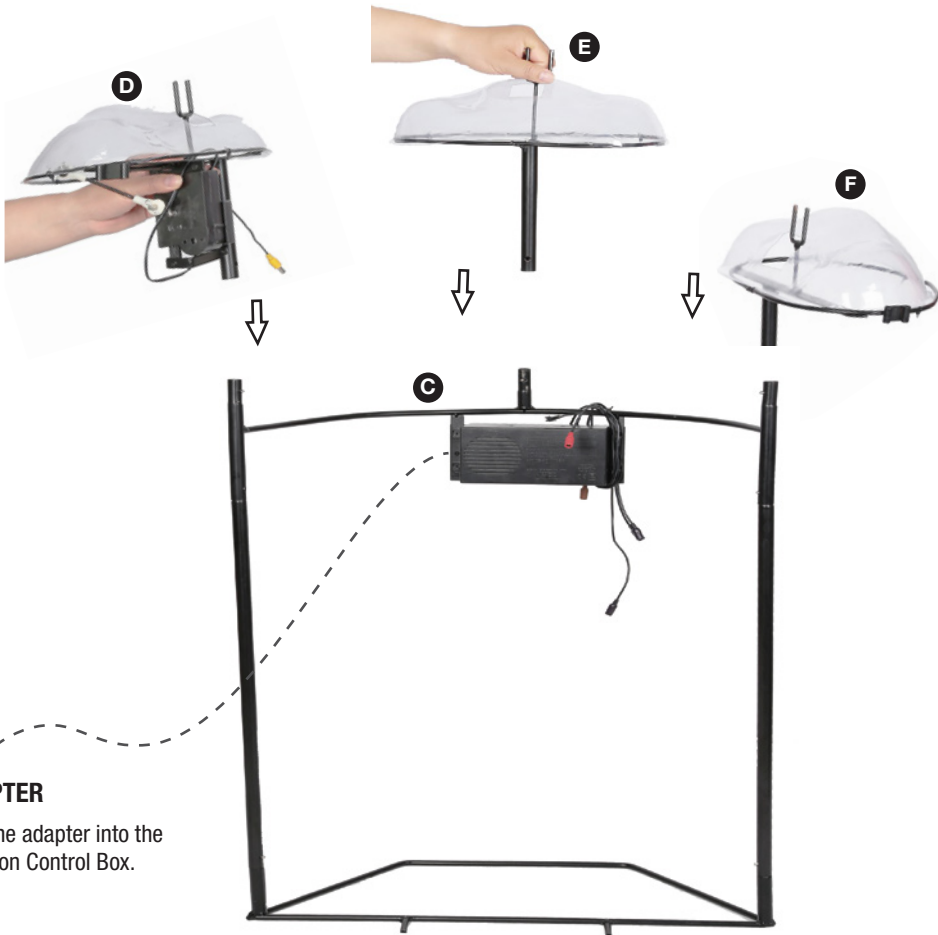
Note: Left and right are relative to the character.



1.1



1.2



ADAPTER

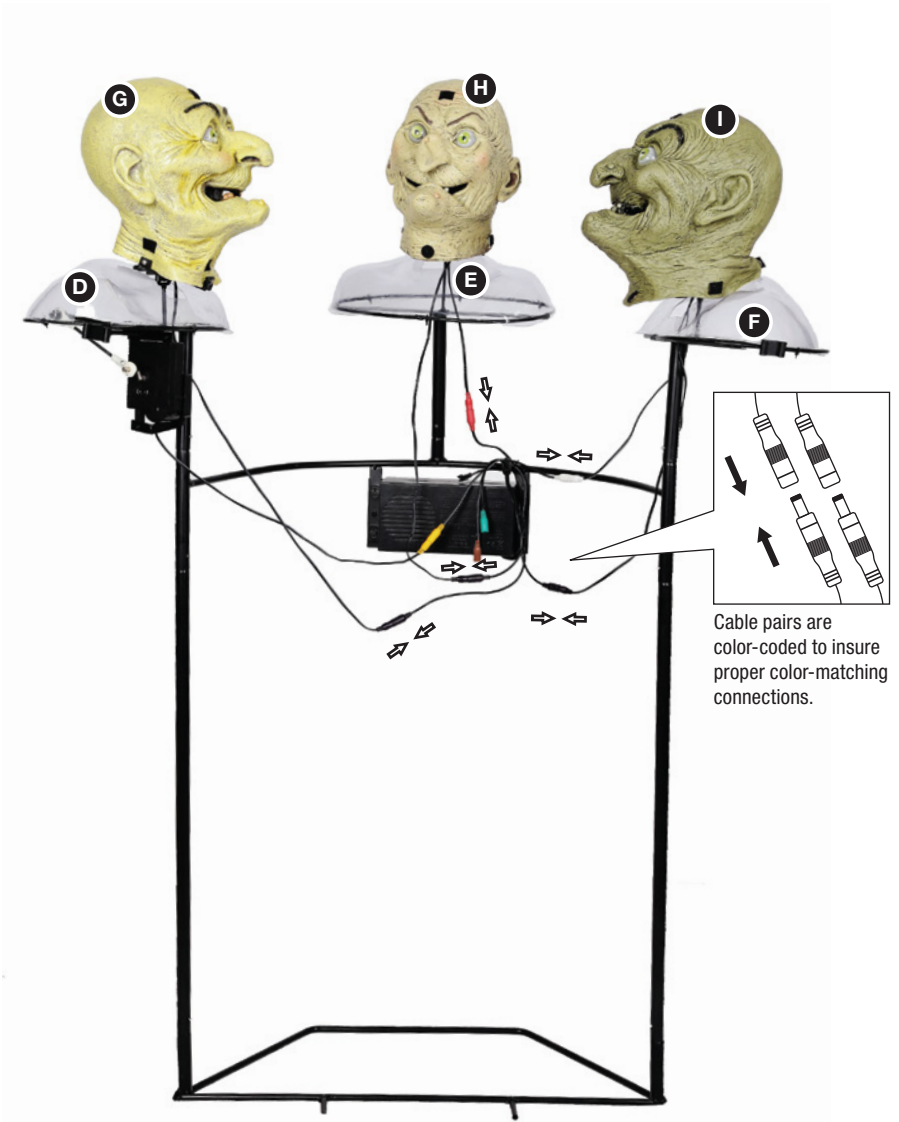
Plug the adapter into the Function Control Box.

2.1

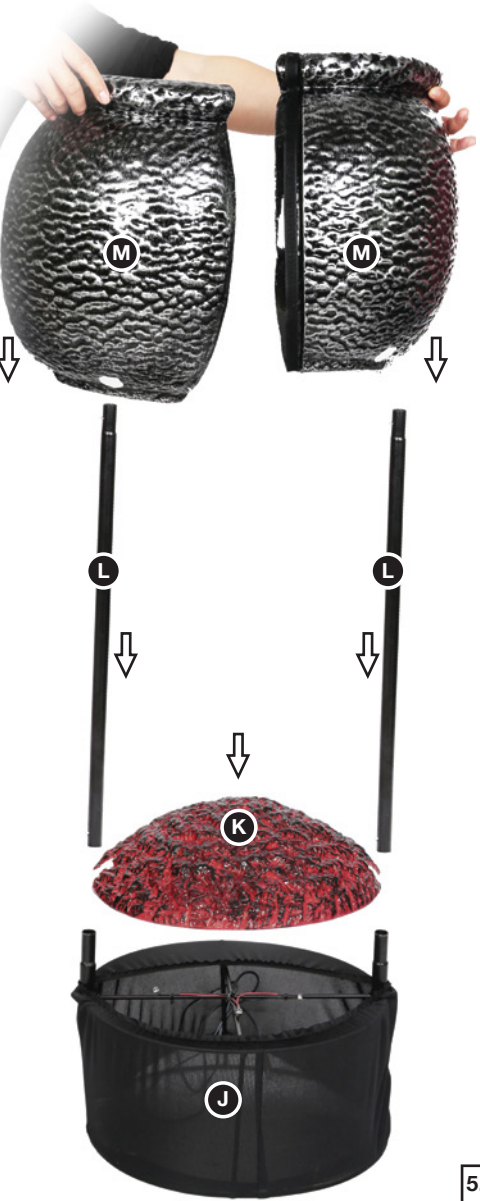
Note: Connect cables by matching by color.



3.1



4.1



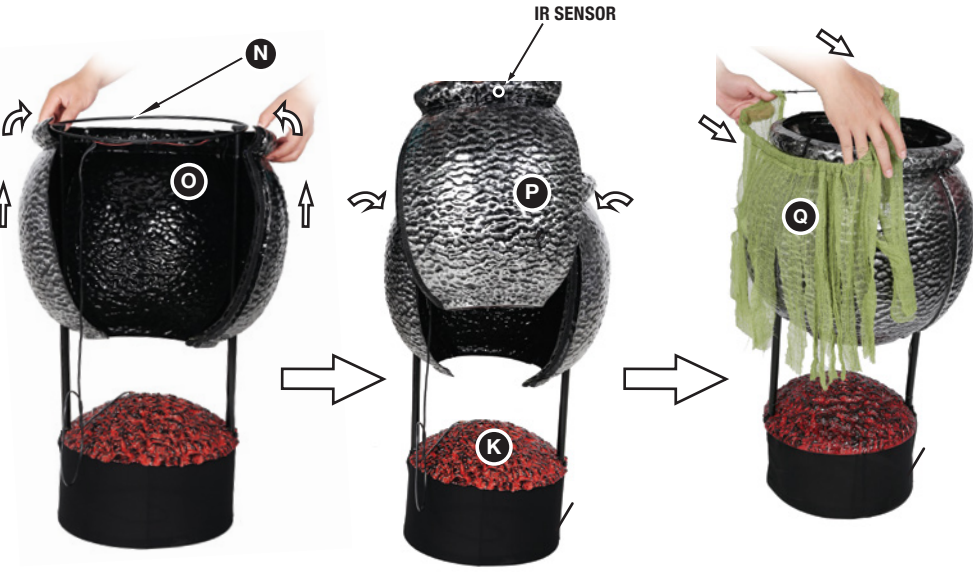
5.1

Note: Connect M and O by velcro.



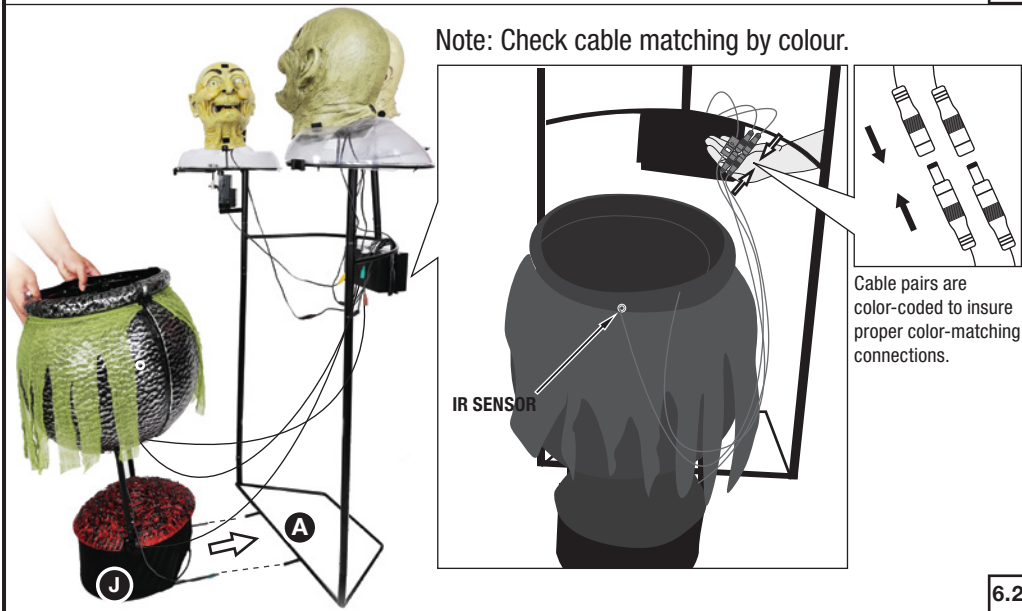
5.2

Note: Hang on to the steel line.



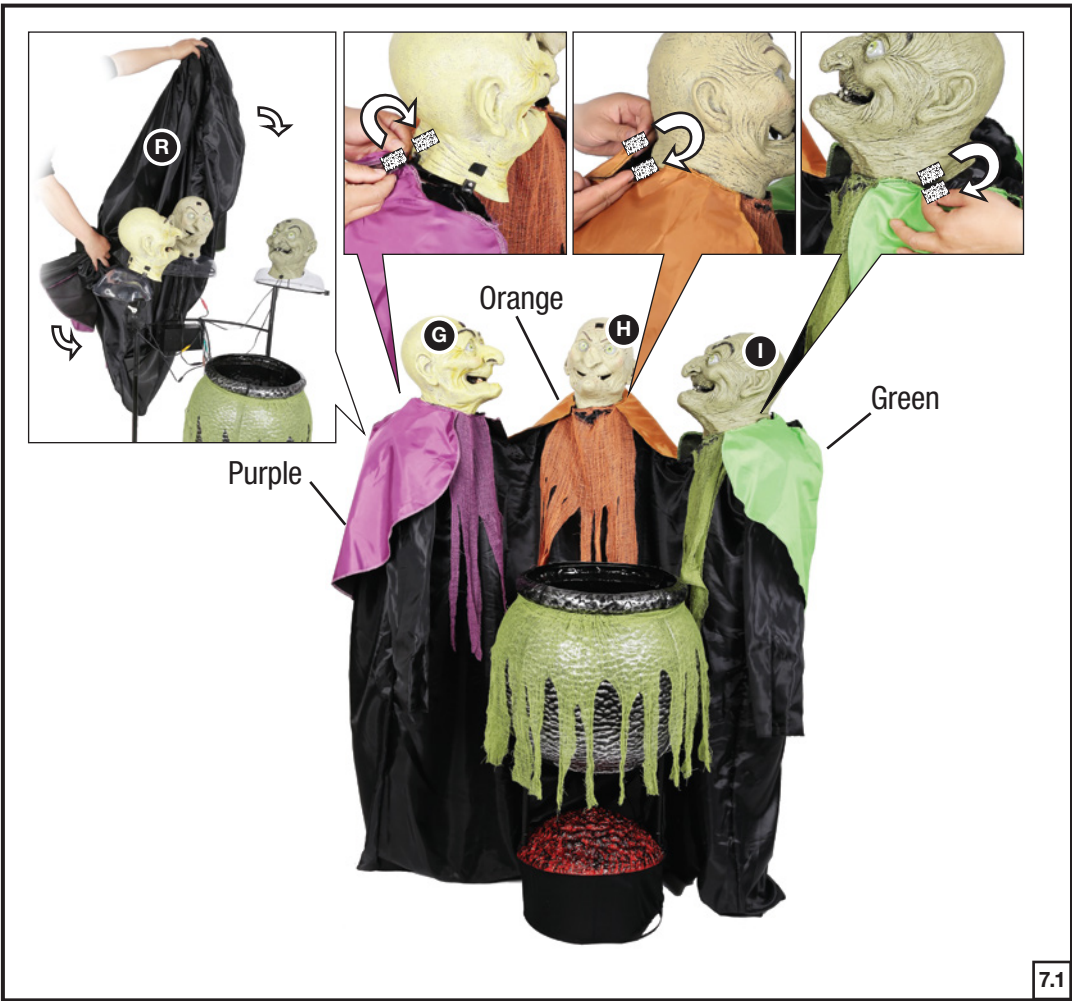
6.1

Note: Check cable matching by colour.



6.2





**OPERATION INSTRUCTIONS:**

1. Plug the AC adapter into a standard power outlet and adjust the settings on the Function Control Box, located on the (C) Function Control Box Frame.
2. Settings:  
Sensor - This switch mode will activate lights, sound, and animation when the Infra-red (IR) sensor is activated and will operate for 1 audio-cycle with each activation. The Infra-red (IR) sensor has a range of up to 2 m/6.5 ft. and will activate when someone comes within an 80-degree angle from left-to-right, as well as from above and below.
- OFF/TRY ME – This switch mode either turns off the item OR allows the item to be activated only if triggered by using a Step Here Activation Pad or Try Me Button (both not included). The item will operate for one audio cycle with each Try Me activation.
- I (ON) - This switch mode will continually operate the lights, sound, and animation of the item.

⊖ ⊕ - Raise or lower the volume using the volume control turn dial, turn all the way down to turn the volume off .

**CAUTION:** Changes or modifications not expressly approved by the party responsible for compliance could void the user's authority to operate the equipment.

**NOTE:** This equipment has been tested and found to comply with the limits for a Class B digital device, pursuant to Part 15 of the FCC Rules. These limits are designed to provide reasonable protection against harmful interference in a residential installation. This equipment generates, uses and can radiate radio frequency energy and, if not installed and used in accordance with the instructions, may cause harmful interference to radio communications. However, there is no guarantee that interference will not occur in a particular installation. If this equipment does cause harmful interference to radio or television reception, which can be determined by turning the equipment off and on, the user is encouraged to try to correct the interference by one or more of the following measures: Reorient or relocate the receiving antenna, Increase the separation between the equipment and receiver, Connect the equipment into an outlet on a circuit different from that to which the receiver is connected. Consult the dealer or experienced radio/TV technician for help.

**CAN ICES-3 (B)/NMB-3 (B)**

Distributed by Home Depot  
2455 Paces Ferry Road Atlanta, GA 30339  
1-877-527-0313

