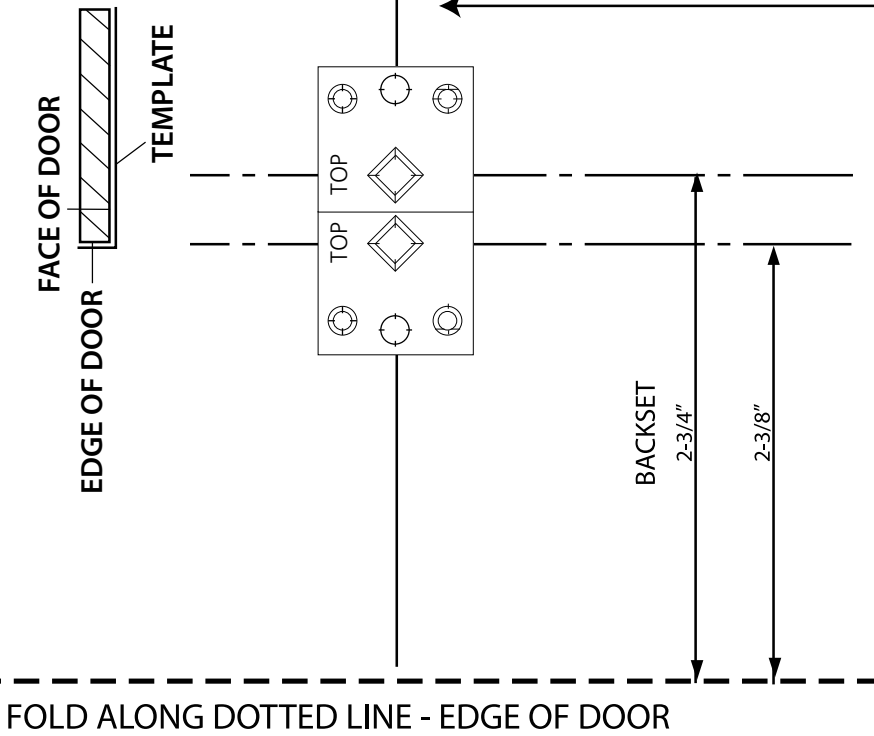


# DUMMY INSTALLATION AND DOOR PREPARATION TEMPLATE - LEVER

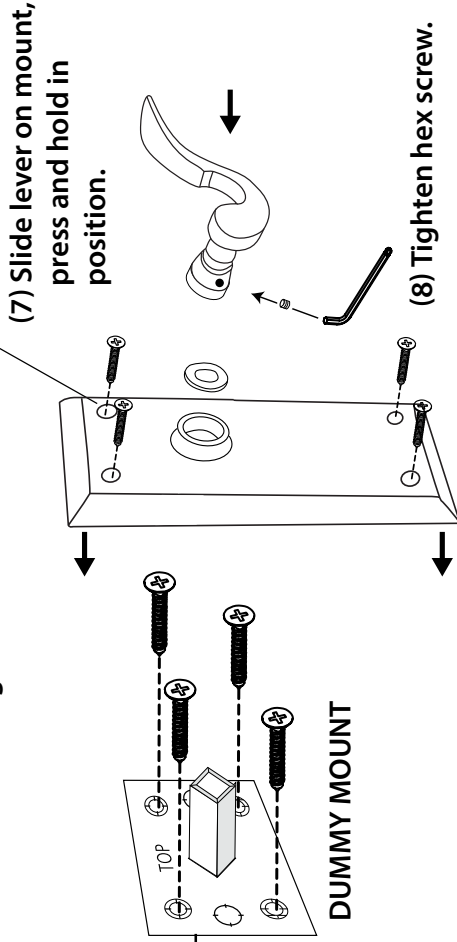
(2) Fold template along dotted line, and position fold on the edge of the door. Tape template to face of door.



(3) Before drilling verify the backset of your existing doors. Mark the four screw hole positions on your dummy mount on the template. Drill pilot holes using a 7/64\"/>

(6) Mark the screw hole positions on your long plate on the door. Drill pilot holes using a 7/64\"/>

(5) Position long plate over mount, align side of long plate with door edge.



(4) Remove template from door. Install four wood screws in dummy mount.

(1) Measure from the floor to the center of existing locks, and use this distance as the height of the dummy mount. If there are no existing locks, position the dummy mount 36\"/>

FLOOR