

CAL FLOR[®]
SOLUTIONS FOR YOUR FLOORS

Mix2Match™
TileFix[®]

UNLIMITED TINT COMBINATIONS

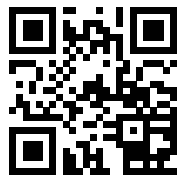
**Formulas included for matching:
STONE • PORCELAIN TILE
SLATE • CERAMIC TILE
POLISHED CONCRETE**



Three Steps!

- 1. Match tile**
- 2. Mix color**
- 3. Apply putty**

For matching videos, tips, hints and more formulas, scan this code or go to www.EasyTileFix.com. Works equally well on tile, stone, furniture, counters and cabinets.



**HEALTH AND SAFETY
KEEP OUT OF REACH OF
CHILDREN**

- Irritating to eye and skin. In case of contact with skin, wash with soap and water. In case of contact with eyes, rinse immediately with plenty of clean, fresh water.
- If swallowed, rinse mouth and throat with cold water. Immediately seek professional medical advice. Take this label with you. Do not induce vomiting.

CalFlor Accessory Systems
1000 Cal Oak Road
Orville, CA 95965
(530) 534-1426

Made in China

CAL FLOR[®]
SOLUTIONS FOR YOUR FLOORS

Mix2Match™
TileFix[®]

COLOR ADJUSTMENT TIPS

- Note: Tints are concentrated - use sparingly.
- The colors can be made lighter or darker by adding more or less putty or by adding the white tint to your mixture.
- To achieve very light colors, add a small amount of the putty/tint mixture to some fresh putty until the desired lightness is achieved.
- To slightly alter colors, add tint to some fresh putty first, then add that to your existing mixture.

CREATING GRAINING OR MARBLING EFFECT

After repair is complete—and before applying lacquer—add your graining or marbling:

1. Mix tints in the bowl to closely match the graining or marbling. It's better to start lighter than darker.
2. Add the white tint or water to reduce the strength of the color, if needed.
3. Place 3 drops of the lacquer onto the mixing board surface.
4. Pull the cotton away from one end of the swab, creating a fine strand, like a fine paint brush.
5. Lightly dip the cotton strand in the tint bowl, being careful not to dip the whole swab.
6. Draw the strand once or twice through the lacquer on the mixing board.
7. Lightly create graining or marbling with the fine strands over the repaired area.
8. Allow to dry and apply a coat of clear lacquer over final repair.

TIP: test graining on a scrap piece of putty to get the look you want.

CAUTION: EYE IRRITANT Read instructions carefully

IMPORTANT: It can be helpful to watch online video first: www.EasyTileFix.com

INSTRUCTIONS

The putty mixture dries much darker, so wet mixture should be much lighter than your final desired shade. When mixing, test a small amount of mixed putty on a scrap of cardboard, or on an inconspicuous area of tile before applying to repair area.

Use a hair dryer to allow quick color testing and speed drying of applications. Mixture usually needs adjusting to ensure a good color match.

PREPARATION

All surfaces should be clean and dry. Shake all pigment bottles thoroughly before and during use.

MIX FORMULA

1. Choose a color from the formula chart found *inside front label* that most closely matches the tile.
 - For a more realistic repair, match the background color (usually much lighter) first, then add foreground graining or marbling.
2. Measure the required amount of putty onto the mixing board.
3. Follow directions for the Mixing Method (A or B) which applies to your formula.

METHOD A: MIX IN BOWL



- 1) Squeeze required amount of putty onto mixing board
- 2) Drop tints into mixing bowl



- 3) Mix tints well
- 4) Dip mixing stick into the bowl and tap onto board

Method A: Add the required amount of tint drops into the bowl and mix thoroughly with the stick. Dip stick in bowl and apply mix to mixing board with a sharp tap - see photograph. Next blend until putty is uniform in color.

METHOD B: DROPS INTO PUTTY



Drop tints directly into putty

Method B: Add tint drops listed in the formula directly to the putty. Next blend until putty is uniform in color.

MIX & APPLY



BLEND WELL



APPLY

APPLICATION

1. Apply mixture to tile with the plastic spatula, slightly overfilling the area of repair. Scrape off any surrounding excess with spatula. Allow to dry 2-3 hours.
2. When the mixture is freshly dry, gently rub away the excess of the surrounding area with a damp cloth until the surface is smooth.
3. If shrinkage occurs, re-apply the above mixture.
4. Once the repair is completely dry (8-12hrs) and graining or marbling is finished, apply clear lacquer over the area using the brush.
5. Allow to fully cure before heavy use (2-3 days).

Hint: Cover extra mixture with plastic wrap to save for a second application or for future use.

FORMULAS, MORE HINTS & TIPS, ON FRONT LABEL.

For more information and videos, go to:
www.EasyTileFix.com

ONE UNIT OF PUTTY MEASURE
3/16-in W x 2-1/2-in L



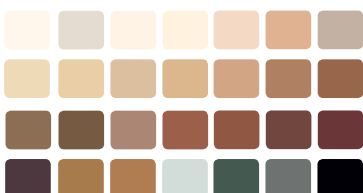
NEW & IMPROVED

Matches Any Tile or Stone

UNLIMITED COLOR COMBINATIONS

Match and Repair Damage on
Any Hard Surface

Create Marbling or Graining



Color formulas inside

HINTS & TIPS

- To save time, pre-fill deep gouges with untinted putty and let dry before topping off with final matching color.
- Save all putty mixes (including tests) under plastic wrap or on cards for 2nd application, marbling tests, etc.
- For very fine repairs, trim brush to make it smaller before applying lacquer.
- To achieve very light colors, add a small amount of the putty/tint mixture to some fresh putty until the desired lightness is achieved.
- To slightly alter colors, add tint to some fresh putty first, then add that to your existing mixture.
- If more space is needed, the back panel of package can be cut off and serve as a mixing plate.
- Putty will darken greatly as it dries.
- For minor scratches, try our ScratchAway concealer or our ScratchCure Repair Pens.
- Always test graining on a scrap piece of putty.
- For a more realistic repair, match the background color (usually much lighter) first, then add darker foreground graining or marbling.
- Final lacquer application can darken some formulas.

TileFix Formula Card

1	putty only	
2	2 A, 2 C 1 Black 6 White	3 taps from bowl into 2 lines putty
3	1 A, 8 C 10 White 1 Yellow	1 tap from bowl into 1 line putty
4	1 A, 5 C 6 White	2 taps from bowl into 2 lines putty
5	8 A, 8 C	6 taps from bowl into 2 lines putty
6	1 A, 1 C	Add drops to 2 lines putty
7	2 A, 2 C 12 White 1 Black	12 taps from bowl into 2 lines putty
8	1 C 10 White	Add drops to 1 line putty
9	3 A, 12 C 3 Yellow	6 taps from bowl into 2 lines putty
10	2 A, 6 C	8 taps from bowl into 2 lines putty
11	1 A, 5 C 4 White	Add drops to 4 lines putty
12	2 A, 4 C	Add drops to 3 lines putty
13	4 A, 4 C	Add drops to 2 lines putty
14	4 A, 4 C	Add drops to 1 line putty
15	3 A, 5 C 1 Black	Add drops to 2 lines putty
16	10 A, 20 C 1 Black	Add drops to 1 line putty
17	22 A, 2 C 1 Black	14 taps from bowl into 2 lines putty
18	4 A, 4 C 1 Red	Add drops to 1 line putty
19	10 C, 8 A 1 Red	Add drops to 1 line putty
20	5A, 5C 2 Red 1 Black	Add drops to 1 line putty
21	20A, 1 Blue 10 Red	Add drops to 1 line putty
22	3A, 3 Red 3C, 3 Yellow 2 Green 3 Black	Add drops to 1 line putty
23	2A, 10C 3 Yellow	Add drops to 1 line putty
24	2A, 10 C	Add drops to 1 line putty
25	5A, 14 White 2 Black 1 Blue 2 Green	4 taps from bowl into 2 lines putty
26	1 C, 1 Black 1 Green 5 White	Add drops to 1 line putty
27	1 Black	Add drop to 1 line putty
28	20 Black	Add drops to 1 line putty