



18V X2 LXT® Lithium-Ion (36V) Brushless Cordless 1/2 Gallon HEPA Filter Backpack Vacuum, Tool Only

Model XCV05Z

Powerful Suction Power in a Light and Comfortable Design



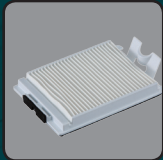
RUN TIME

Up to 90 minutes of continuous operation using two 18V LXT® 5.0Ah batteries (batteries not included)



POWER

Powerful motor generates 53 CFM of suction power and 28.5" of water lift



EFFICIENCY

Efficient two stage HEPA filtration system captures large, small and micro dust particulates extending the life of the main HEPA filter



COMFORT

Push button power selection controller for (high/low) operation



LXT® X2 18V 18V 36V BRUSHLESS

FEATURES

- Powerful motor generates 53 CFM of suction power and 28.5" of water lift
- Up to 90 minutes of continuous operation on low setting and 60 minutes on high setting using two 18V LXT® 5.0Ah batteries BL1850B (batteries not included)
- Efficient BL™ Brushless motor is electronically controlled to optimize battery energy use for up to 50% longer run time per charge
- Compact and lightweight design; weighs only 9.4 lbs. with batteries (batteries not included)
- The BL™ Brushless Motor eliminates carbon brushes, enabling the BL™ Motor to run cooler and more efficiently for longer life
- Push button power selection controller for (high/low) operation; attaches to waist belt of the harness
- Built-in L.E.D. on the controller illuminates the work area
- 39" flexible hose for extended reach and comfort
- Telescoping extension wand provides 20" - 34" of additional reach

SPECIFICATIONS

Air Flow Rate	53 CFM
Static Water Lift	28.5"
Battery	2X 18V LXT® Lithium-Ion
Continuous Use (max, in minutes)	60 min.
HEPA filters available	Yes
Working Sound Level	70 dB(A)
Gross Container Size	.5 gal.
Overall Length	14-3/4"
Net Weight (with battery)	9.4 lbs.
Shipping Weight	10.4 lbs.
UPC Code	088381-817417
Power Type	Cordless

STANDARD EQUIPMENT

- Floor Nozzle
- Flexible Rubber Nozzle
- Dust Bag
- Bending Pipe Assembly
- HEPA Filter
- Telescoping Extension Wand
- Hose Band
- 39" Flexible Hose

OPTIONAL ACCESSORIES

- 18v Compact Lithium-Ion 2.0Ah Battery (BL1820B)
- 18v LXT® Lithium-Ion 4.0Ah Battery (BL1840B)
- 18v LXT® Lithium-Ion 5.0Ah Battery (BL1850B)
- 18v Lithium-Ion Rapid Optimum Charger (DC18RC)
- 18v Lithium-Ion Dual Port Rapid Optimum Charger (DC18RD)

All specifications subject to change without prior notice. All models and accessories subject to stock on hand.
The Makita Teal Color is the trade dress of Makita Corporation and is protected under common law and registered with the U.S. Patent and Trademark Office

Makita offers a wide variety of accessories. For a complete listing, please refer to the Makita General Catalog or visit our website at makitatools.com, or call 1-800-4MAKITA.



18V Lithium-Ion Dual Port Rapid Optimum Charger

Model DC18RD

CHARGES TWO BATTERIES SIMULTANEOUSLY

- Charges two (2) 18V LXT® Lithium-Ion 2.0 Ah batteries in only 25 minutes
- Charges two (2) 18V LXT® Lithium-Ion 3.0 Ah batteries in only 30 minutes
- Charges two (2) 18V LXT® Lithium-Ion 4.0 Ah batteries in only 40 minutes
- Charges two (2) 18V LXT® Lithium-Ion 5.0 Ah batteries in only 45 minutes
- Built-in USB port for charging portable electronic devices



18V
LITHIUM-ION

INNOVATION



Dual port charger

CONVENIENCE



Built-in USB port for charging portable electronic devices

TECHNOLOGY



Charges 2 batteries simultaneously

CHARGE TIME

2 BATTERIES

2.0Ah	25 Minute Charge Time
3.0Ah	30 Minute Charge Time
4.0Ah	40 Minute Charge Time
5.0Ah	45 Minute Charge Time

DUAL PORT CHARGER

18V Lithium-Ion Dual Port Rapid Optimum Charger

Model DC18RD

FEATURES & BENEFITS

- Charges two (2) 18V Compact Lithium-Ion 2.0 Ah batteries in only 25 minutes
- Charges two (2) 18V LXT® Lithium-Ion 3.0 Ah batteries in only 30 minutes
- Charges two (2) 18V LXT® Lithium-Ion 4.0 Ah batteries in only 40 minutes
- Charges two (2) 18V LXT® Lithium-Ion 5.0 Ah batteries in only 45 minutes
- Built-in USB port for charging portable electronic devices
- The Makita Rapid Optimum Charger communicates with the battery's built-in chip throughout the charging process to optimize battery life by actively controlling current, voltage and temperature
- Built-in fan circulates air through the battery during the charging process to cool the battery for faster charge time.
- Optimizes battery life by actively controlling current, voltage and temperature
- 1 year warranty on the charger

SPECIFICATIONS

Charging voltages		14.4V - 18V
Charging times	(2) BL1820	25 minutes
	(2) BL1830	30 minutes
	(2) BL1840	40 minutes
	(2) BL1850	45 minutes
Net weight		4.1 lbs.
UPC code		088381-443838

OPTIONAL ACCESSORIES

- 18V LXT® Lithium-Ion 2.0 Ah Battery (BL1820)
- 18V LXT® Lithium-Ion 3.0 Ah Battery (BL1830)
- 18V LXT® Lithium-Ion 4.0 Ah Battery (BL1840)
- 18V LXT® Lithium-Ion 5.0 Ah Battery (BL1850)



Model DC18RD



Makita offers a wide variety of accessories. For a complete listing, please refer to the Makita General Catalog or visit our website at makitatools.com, or call 1-800-4MAKITA.

All specifications subject to change without prior notice. All models and accessories subject to stock on hand.
The Makita Teal Color is the trade dress of Makita Corporation and is protected under common law and registered with the U.S. Patent and Trademark Office
NTF-0914 MA-4221-14