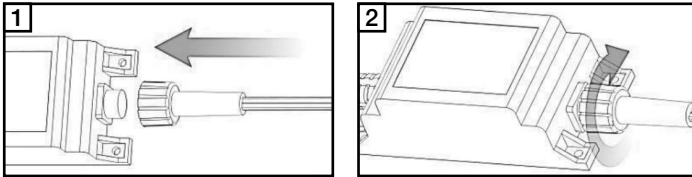


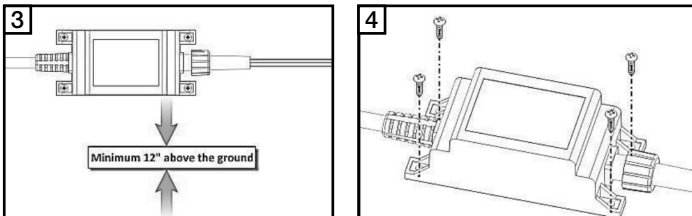
Prepare the Transformer and Photocell

1. Properly align the photocell plug and the transformer receptacle and firmly push the plug into place.
2. Tighten the plastic nut by turning clockwise. If the photocell is already attached, check to make sure plastic nut is completely tight for a weatherproof seal.



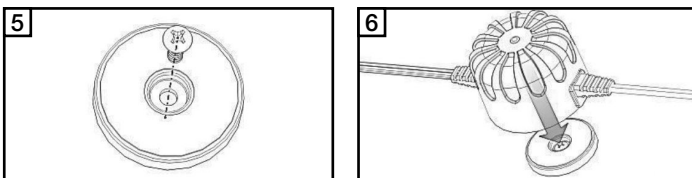
Mount the Transformer

1. Mount near an outdoor GFCI outlet within reach of the power cord.
Note: Mount at least 10 feet from ponds, pools, or spas. Do not use extension cords. Follow all national and local building and electrical codes.
2. Use screws (not supplied) to mount transformer to wall surface or deck joist a minimum of 12" above ground level.
3. Plug the transformer into the GFCI outlet.



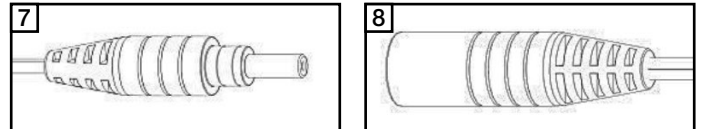
Mount the Photocell

1. Mount the round photocell holder to wall surface or deck joist.
2. Ensure the photocell can sense dusk and dawn conditions in the mounted location.
3. Peel off the protective film covering the adhesive on the top surface of the round photocell holder.
4. Align the photocell and press firmly onto the adhesive.



Prepare the Lighted Cap

1. Run the 5' wiring harness included with the Lighted Cap down the inside of the Post Sleeve with the smaller male connector hanging out the top of the post.
Note: The small male connector will fit through a 3/8" hole if needed.
2. The large female connector should be hanging out of the bottom or under the deck.
Note: The large female connector will fit through a 1/2" hole if needed.



Make the Connections

1. Run 9' power cable from photocell to the location of the first light.
Note: If needed, the power cable can fit through a 1/2" hole. If using wire staples do not pierce or crush the wires.
2. Plug the output connector into the supplied T-Connector pressing firmly until connection is fully engaged.
Note: Connection is fully engaged when there is little to no gap between the output connector and the T-Connector.
3. Plug the large connector from Step 4b into the T-Connector.
4. If other Lighted Caps are being installed, connect the 9' harness from the T-Connector Kit at this time.
5. If no other lights are to be connected, cap the unused T-Connector terminal with the attached cap.
6. Once all connections are made, the T-Connector can be secured loosely using 2 screws (not supplied).
Note: Do not completely tighten the screws; this can damage the T-Connector.

